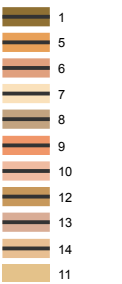


**Legend**

**MAP Lines**



● Drop Point

● Helispot

XXXX Dozer Line

Uncontrolled Fire Edge

Completed Line

Hand Line

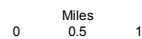
**Transportation**

Transportation

Highways

Local Roads

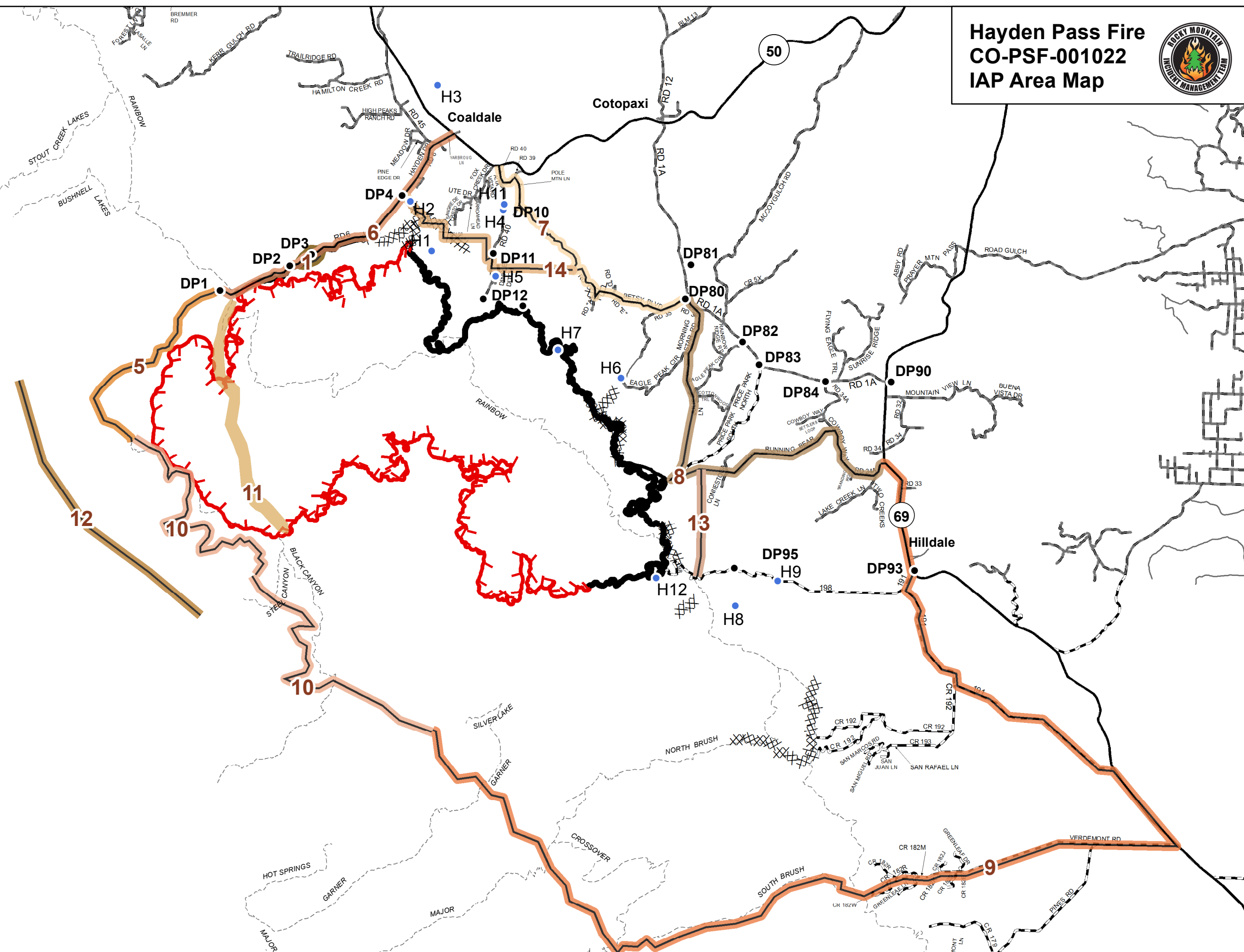
FS Trails



7/23/2016  
Day  
1:99.661  
JCM



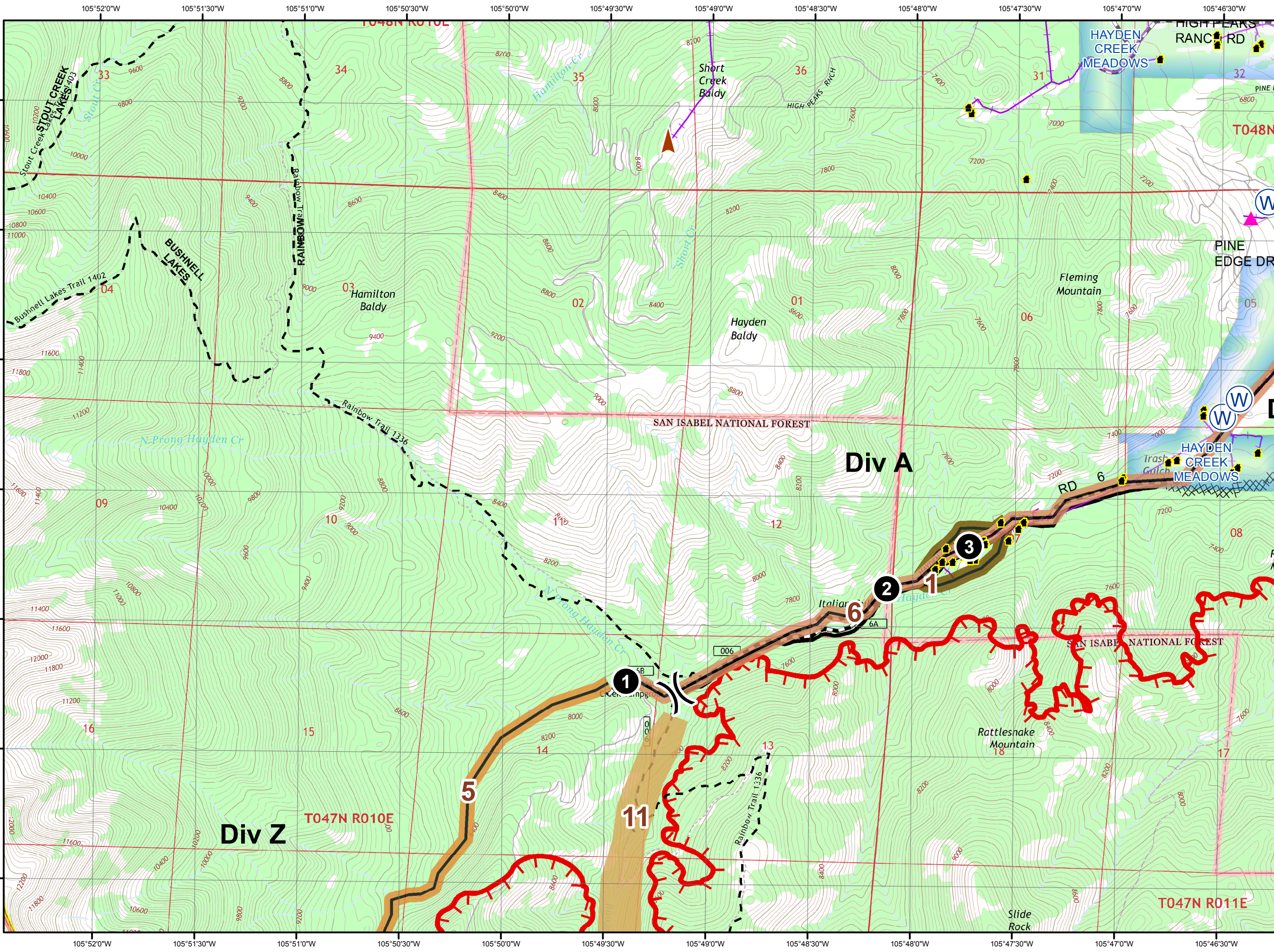
**Hayden Pass Fire**  
**CO-PSF-001022**  
**IAP Area Map**



**Perimeter Data**  
**7/21/2016**  
**0100 Hrs.**  
**16,489 Acres**

**HAYDEN PASS FIRE – CO-PSF-001022**  
**MANAGEMENT ACTION POINTS**  
**7/16/16**

MAP	NAME	CONDITION	ACTIONS	RESOURCES	ACTIVE
1v2	Cuttys	When threatened by wildfire.	Implement Structure Defense Plan.	I TFLD Engine (3T3, 2 T6), and 1 tactical tender.	Yes 7/11/16
2	Evacuation Coaldale	Fire reaches point traveling from west to east.	Evacuate Coaldale.	USFS 8 engines, county sheriff, volunteer fire department.	No 7/14/16
3	Foxrun	Fire reaches trigger point.	Evacuation of Fox Run and Coaldale	USFS 7 engines, county sheriff, volunteer fire department.	No 7/14/16
5	PS1	If the fire becomes established north of the MAP.	Re-evaluate fire spread potential to the north towards the community of Howard and identify natural barriers for holding actions.	Resources commensurate with wilderness values as determined by Operations.	Yes 7/14/16
6v2	PS2	If fire becomes established north of the MAP.	Areas outside of the wilderness will be controlled. Activate Structure Defense Plan and contact affected cooperators to facilitate necessary evacuations north of the MAP and west of Hwy 50. Begin to evaluate Stout Creek as a MAP for containment actions.	As determined by Operations.	Yes 7/16/16
7v2	PSBLM1	If fire threatens MAP.	Evacuate and defend threatened structures and community of Cotopaxi down to, and including, 5x road. Contact affected cooperators and implement Structure Defense Plan.	As determined by Operations.	Yes 7/16/16
8v2	PSBLM2	If fire threatens MAP.	Evacuate and defend threatened structures in and around Falls Gulch, Price Park and community of Cotopaxi. Contact affected cooperators and implement Structure Defense Plan.	As determined by Operations.	Yes 7/16/16
9	PS3	If fire threatens MAP.	Utilize Taylor Creek drainage system (outside of wilderness) to begin indirect/direct suppression of fire to prevent fire spread south of the Taylor Creek drainage.	Resources commensurate with suppression needs adjacent to the wilderness as determined by Operations.	Yes 7/14/16
10v2	RG-1	If fire crosses MAP and becomes established in timber below MAP.	Re-evaluate closure order. Confirm strategy on west side of Sangre crest. Engage SLVFO BLM. Contact affected cooperators.	Agency administrator, Operations, and IC.	Yes 7/16/16
11v2	GBCT	Fire impacts habitat in riparian.	Evaluate burned area for potential need to protect remaining habitat and/or evacuation of Greenback Cutthroat trout.	Resource advisor, Colorado Parks and Wildlife Fisheries Biologist and other resources as determined by Operations.	Yes 7/16/16
12v2	Gunn-Sage	If fire becomes established on upper third of slope.	Notify San Luis Valley BLM and Rio Grande NF agency representative if the fire is expected to impact Gunnison sage grouse habitat.	Resource Advisor, Agency Representative and IMT.	Yes 7/16/16
13	Lake Creek Structure Defense	If fire breaches the delineated MAP line.	Activate the Structure Defense Plan and contact affected cooperators to facilitate necessary evacuations.	Pre identified by Operations structure defense resources.	Yes 7/16/16
14	East Perimeter Defense Plan	If fire breaches the delineated MAP line.	Activate the Structure Defense Plan and contact affected cooperators to facilitate necessary evacuations.	Pre identified by Operations structure defense resources.	Yes 7/16/16

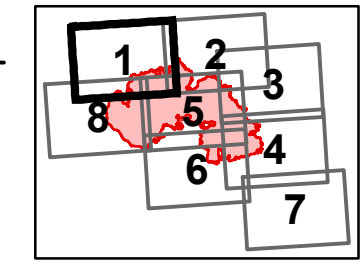
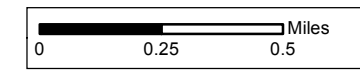


### Legend

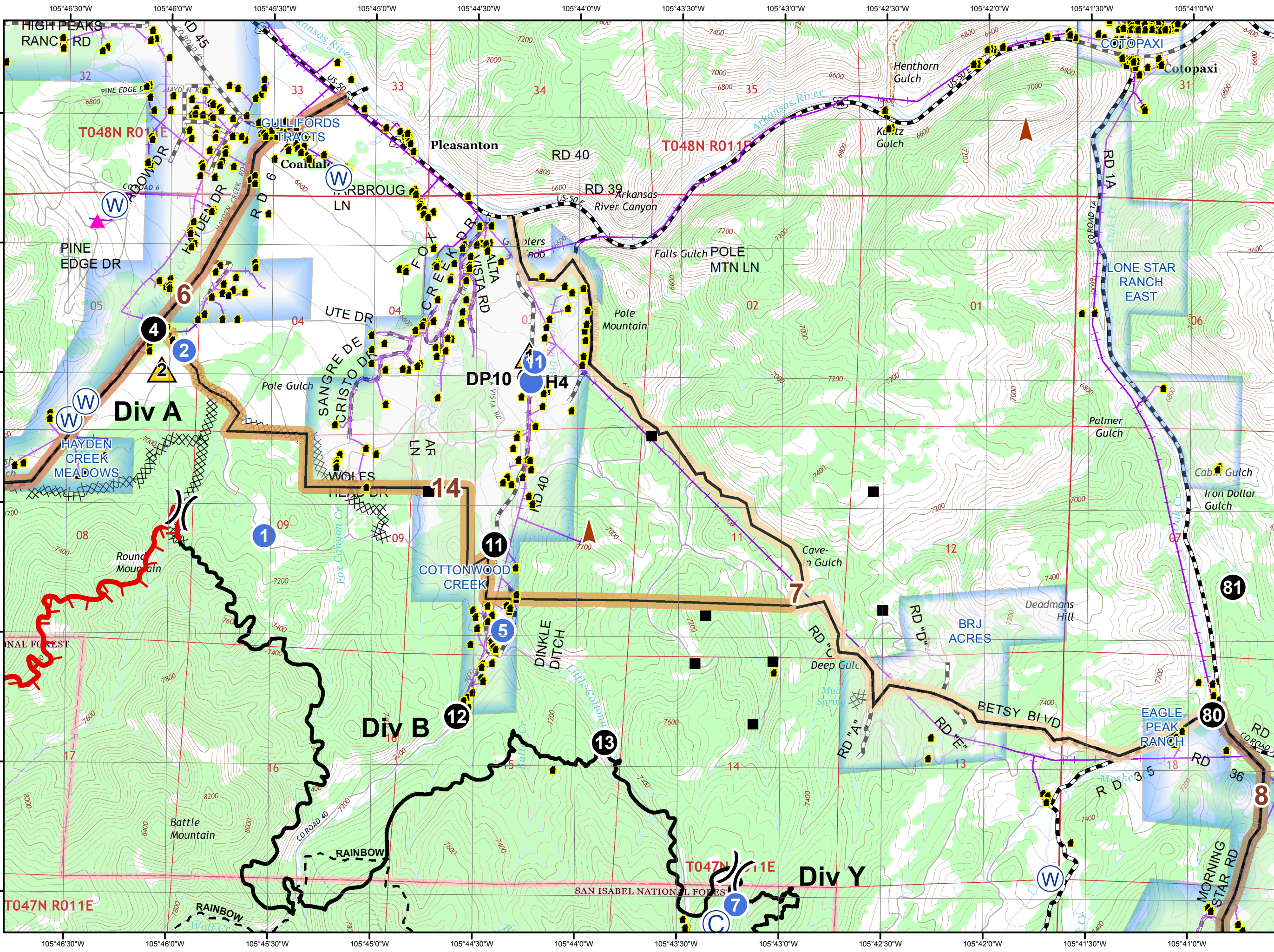
- Drop Point
- Helispot
- ICP
- Helibase
- ▲ Safety Zone
- Water Source
- Camp
- Repeater
- Structure
- FirePerimeter
- XXXX Dozer Line
- Completed Line
- ( ) Division Break
- - - Trails
- Roads
- ▲ Comm Sites
- ▲ Minerals
- Hazardous Sites

1
5
6
7
8
9
10
12
13
14
11

- Fremont Communities
- Powerline
- Fire History
- No Bulldozers
- Possible Dynamite



Perimeter Data  
7/21/2016  
0100 Hrs.  
16,489 Acres

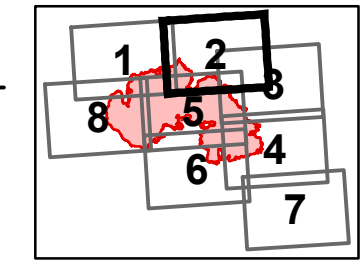
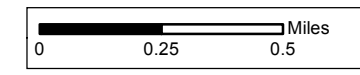


### Legend

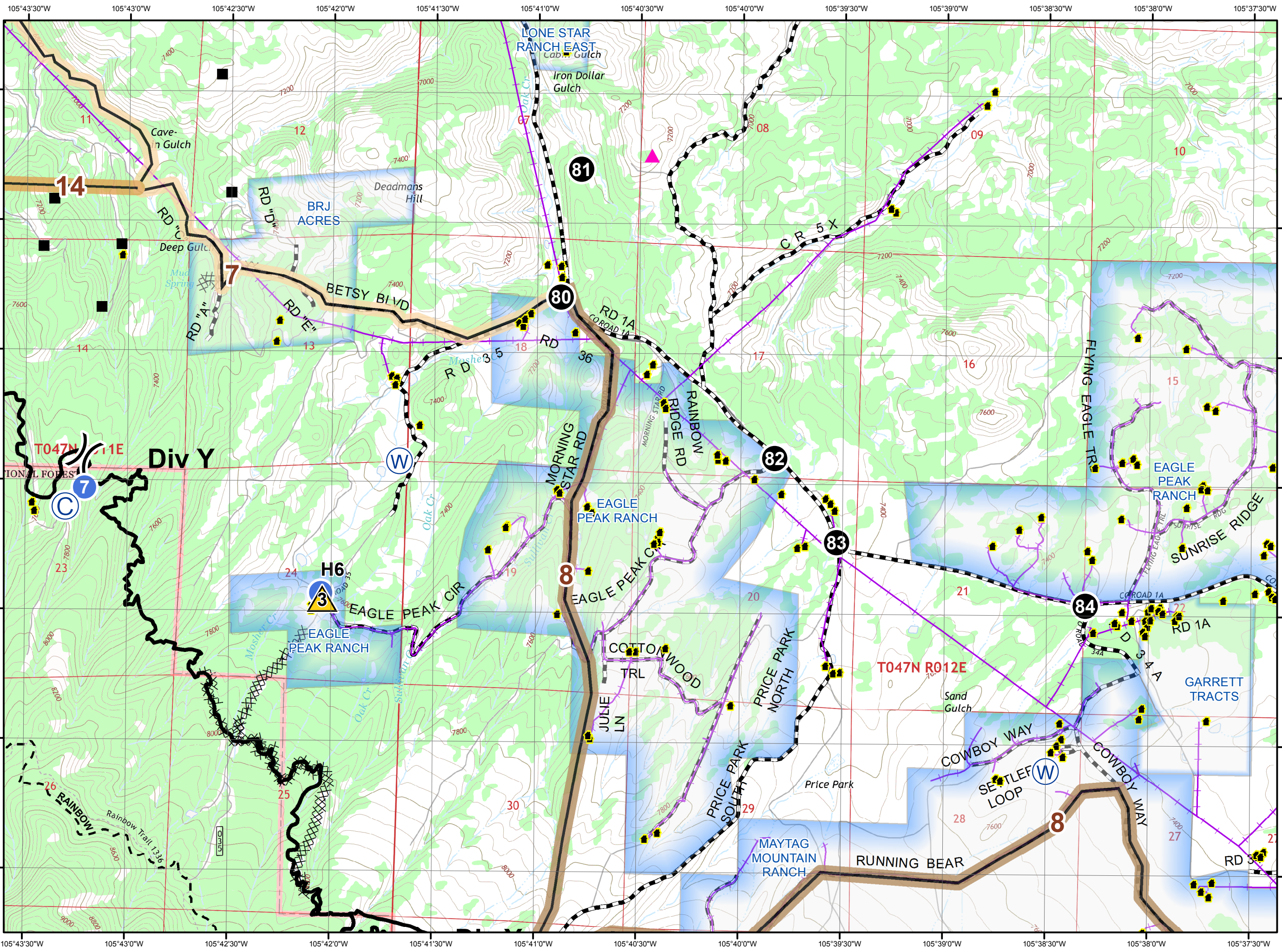
- Drop Point
- Helispot
- ICP
- Helibase
- ▲ Safety Zone
- Water Source
- Camp
- Repeater
- Structure
- Fire Perimeter
- XXXX Dozer Line
- Completed Line
- ( ) Division Break
- - - Trails
- Roads
- ▲ Comm Sites
- ▲ Minerals
- Hazardous Sites

1
5
6
7
8
9
10
12
13
14
11

- Fremont Communities
- Powerline
- Fire History
- ▨ No Bulldozers
- ▨ Possible Dynamite



Perimeter Data  
7/21/2016  
0100 Hrs.  
16,489 Acres

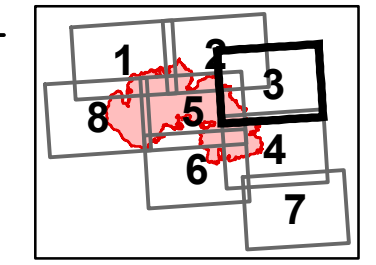
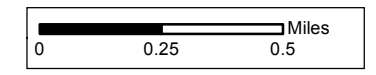


### Legend

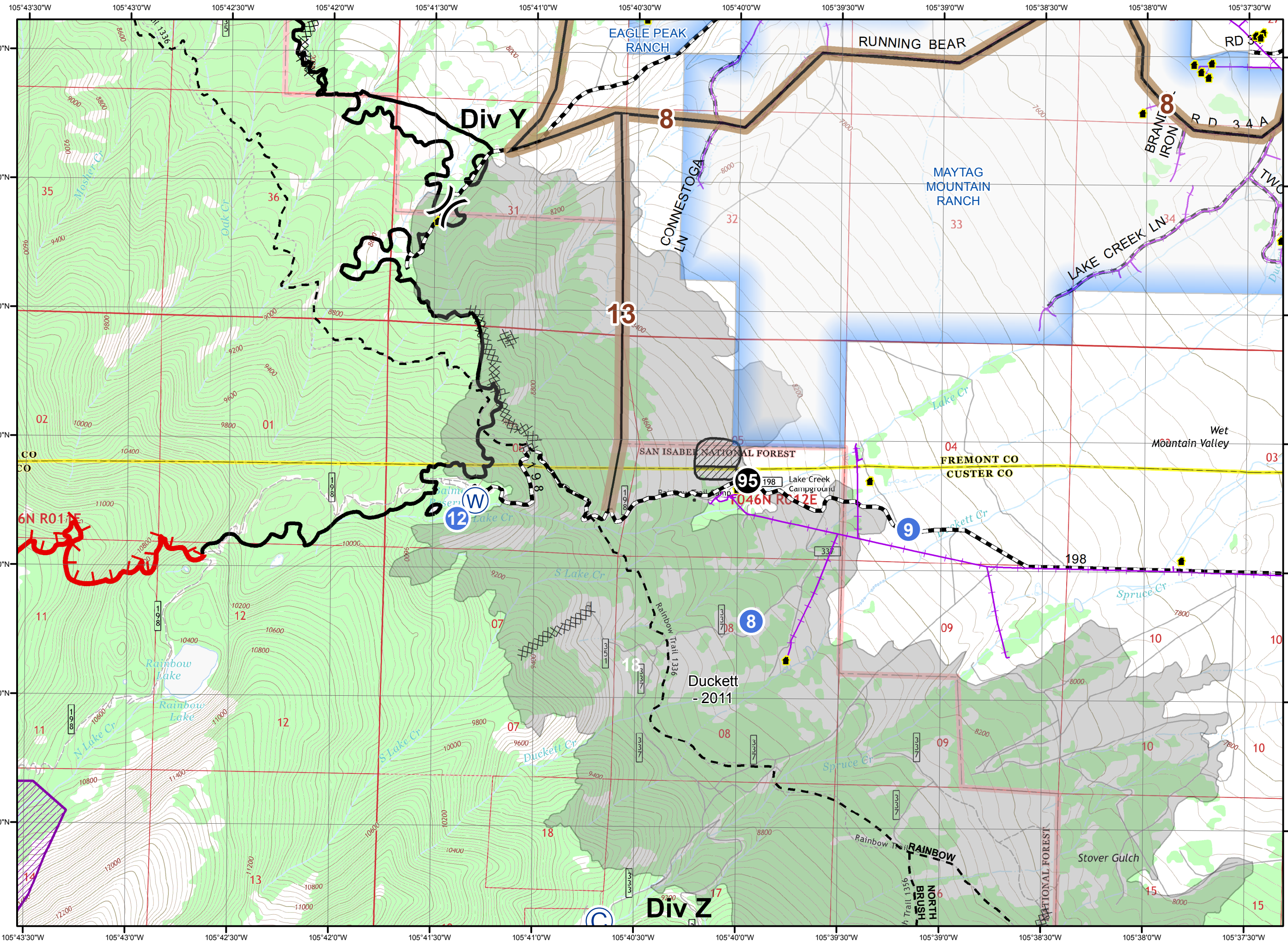
- Drop Point
- Helispot
- ICP
- Helibase
- ▲ Safety Zone
- Water Source
- Camp
- Repeater
- Structure
- Fire Perimeter
- XXXX Dozer Line
- Completed Line
- ( ) Division Break
- - - Trails
- Roads
- ▲ Comm Sites
- ▲ Minerals
- Hazardous Sites

1-15 (Color swatches)

- Fremont Communities
- Powerline
- Fire History
- No Bulldozers
- Possible Dynamite

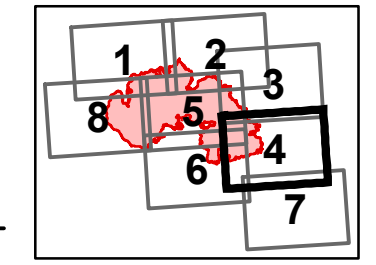
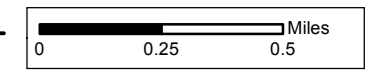


Perimeter Data  
7/21/2016  
0100 Hrs.  
16,489 Acres



### Legend

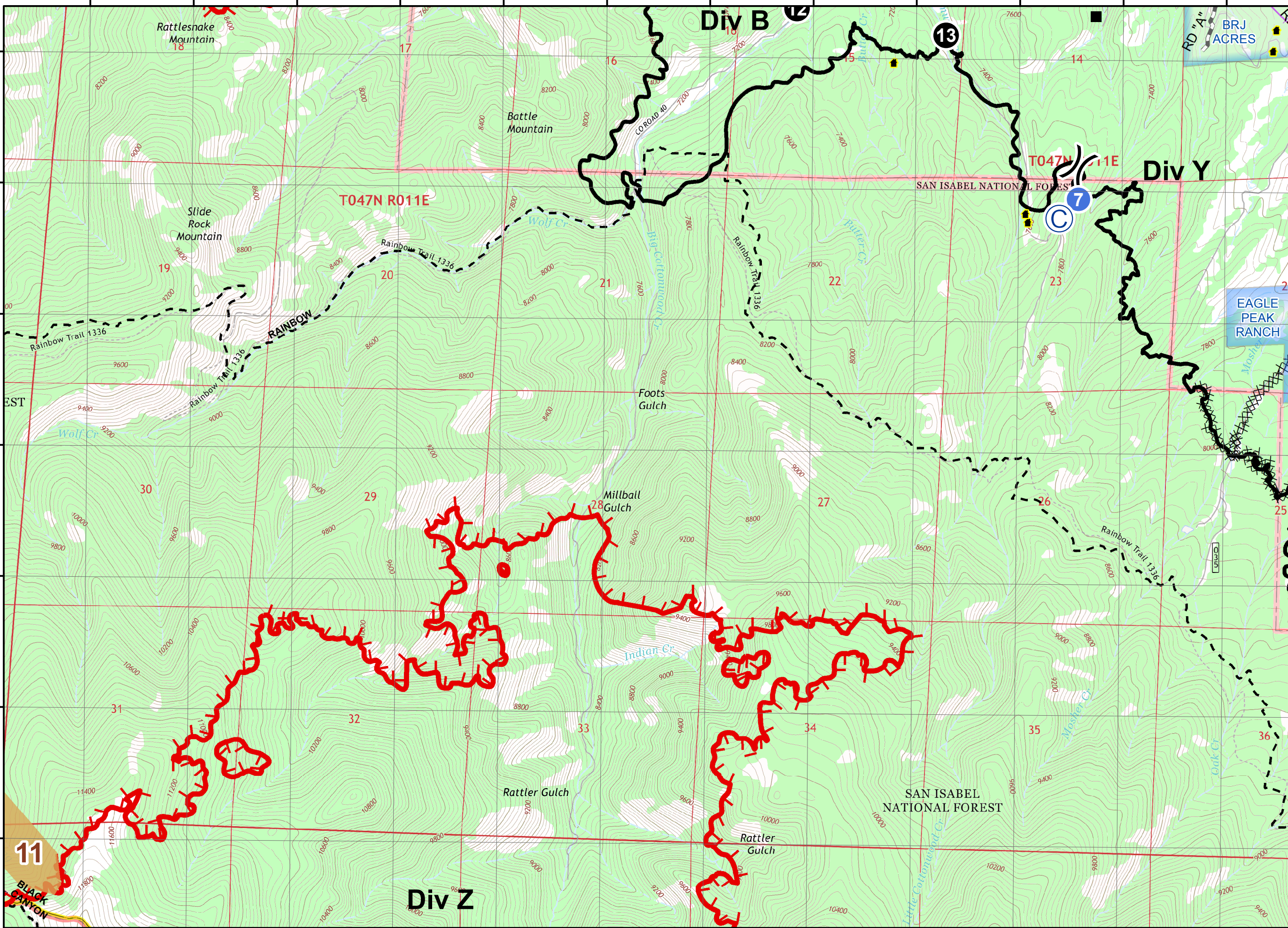
- Drop Point
- Helispot
- ICP
- Helibase
- ▲ Safety Zone
- Water Source
- Camp
- Repeater
- Structure
- FirePerimeter
- XXXX Dozer Line
- Completed Line
- ( ) Division Break
- - - Trails
- Roads
- ▲ Comm Sites
- ▲ Minerals
- Hazardous Sites
- 1-14 (Color swatches)
- Fremont Communities
- Powerline
- Fire History
- ▨ No Bulldozers
- ▨ Possible Dynamite



Perimeter Data  
7/21/2016  
0100 Hrs.  
16,489 Acres

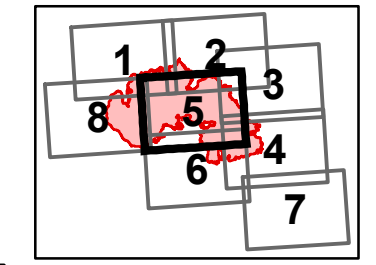
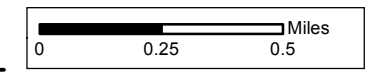
105°48'0"W 105°47'30"W 105°47'0"W 105°46'30"W 105°46'0"W 105°45'30"W 105°45'0"W 105°44'30"W 105°44'0"W 105°43'30"W 105°43'0"W 105°42'30"W

38°19'30"N  
38°19'0"N  
38°18'30"N  
38°18'0"N  
38°17'30"N  
38°17'0"N  
38°16'30"N

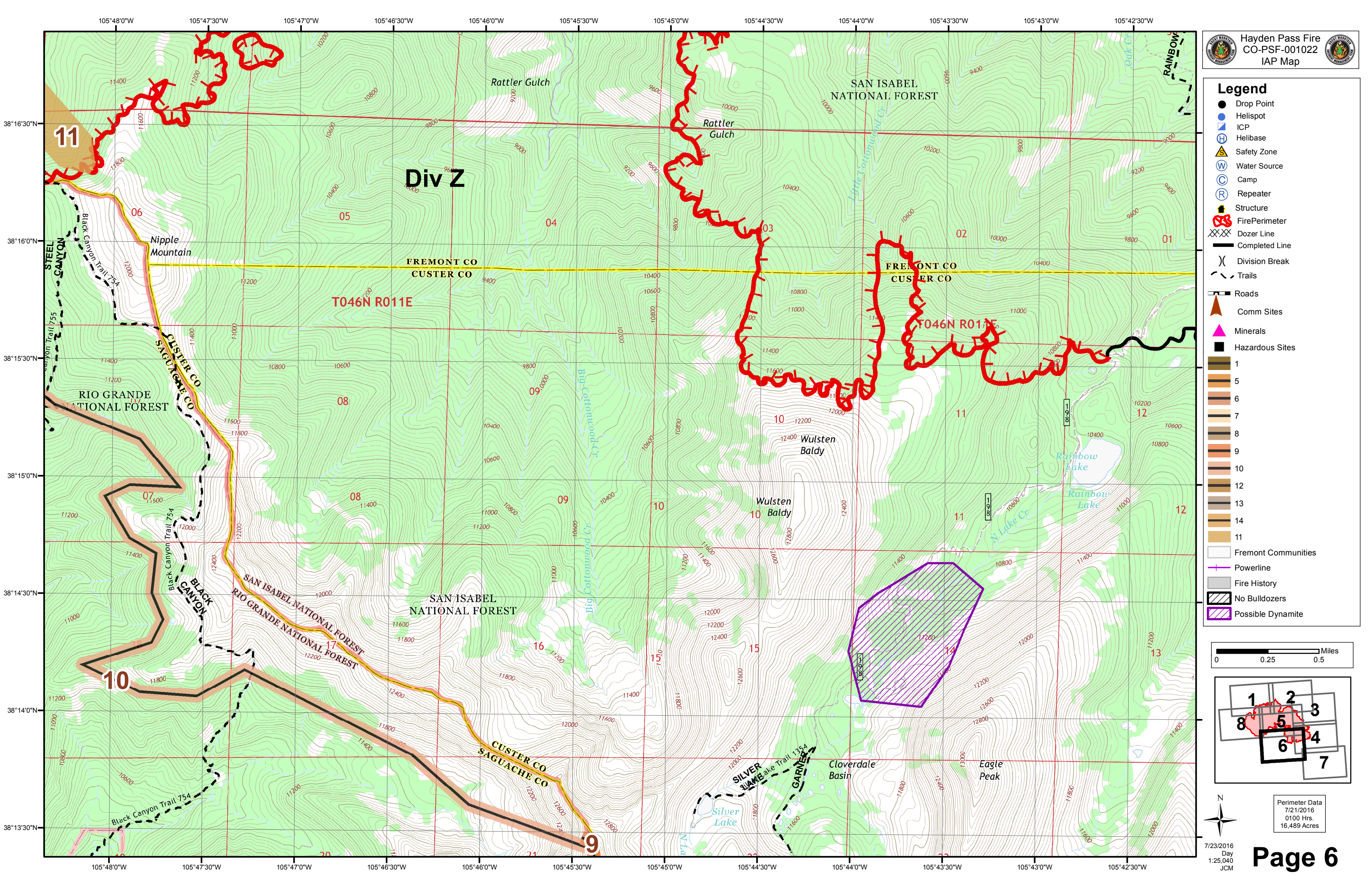


**Legend**

- Drop Point
- Helispot
- ICP
- Helibase
- ▲ Safety Zone
- Water Source
- Camp
- Repeater
- Structure
- FirePerimeter
- XXX Dozer Line
- Completed Line
- ( ) Division Break
- - - Trails
- Roads
- ▲ Comm Sites
- ▲ Minerals
- Hazardous Sites
- 1-14 (Color swatches)
- Fremont Communities
- Powerline
- Fire History
- ▨ No Bulldozers
- ▨ Possible Dynamite

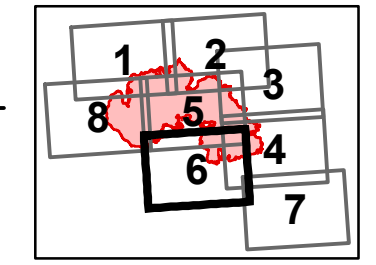
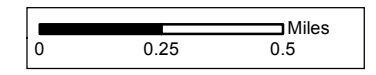


Perimeter Data  
7/21/2016  
0100 Hrs.  
16,489 Acres



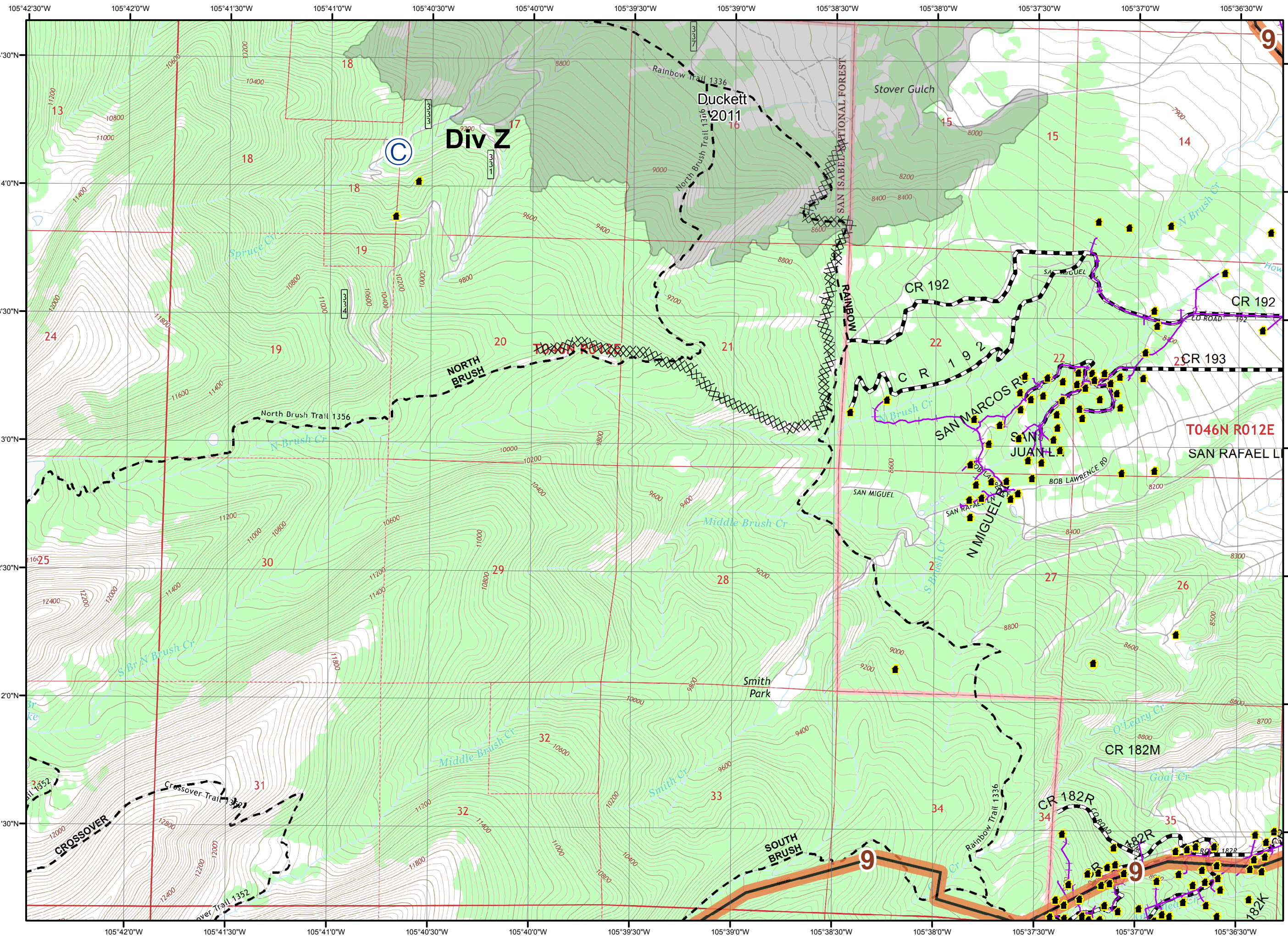
### Legend

- Drop Point
- Helispot
- ICP
- Helibase
- ▲ Safety Zone
- Water Source
- Camp
- Repeater
- Structure
- FirePerimeter
- XXX Dozer Line
- Completed Line
- ( ) Division Break
- - - Trails
- Roads
- ▲ Comm Sites
- ▲ Minerals
- Hazardous Sites
- 1-16 (Color swatches)
- Fremont Communities
- Powerline
- Fire History
- ▨ No Bulldozers
- ▨ Possible Dynamite



Perimeter Data  
7/21/2016  
0100 Hrs.  
16,489 Acres



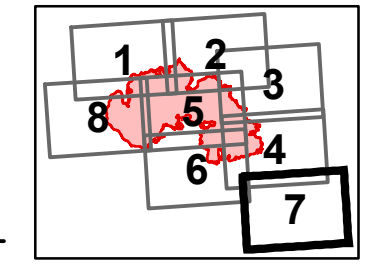
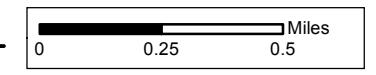


### Legend

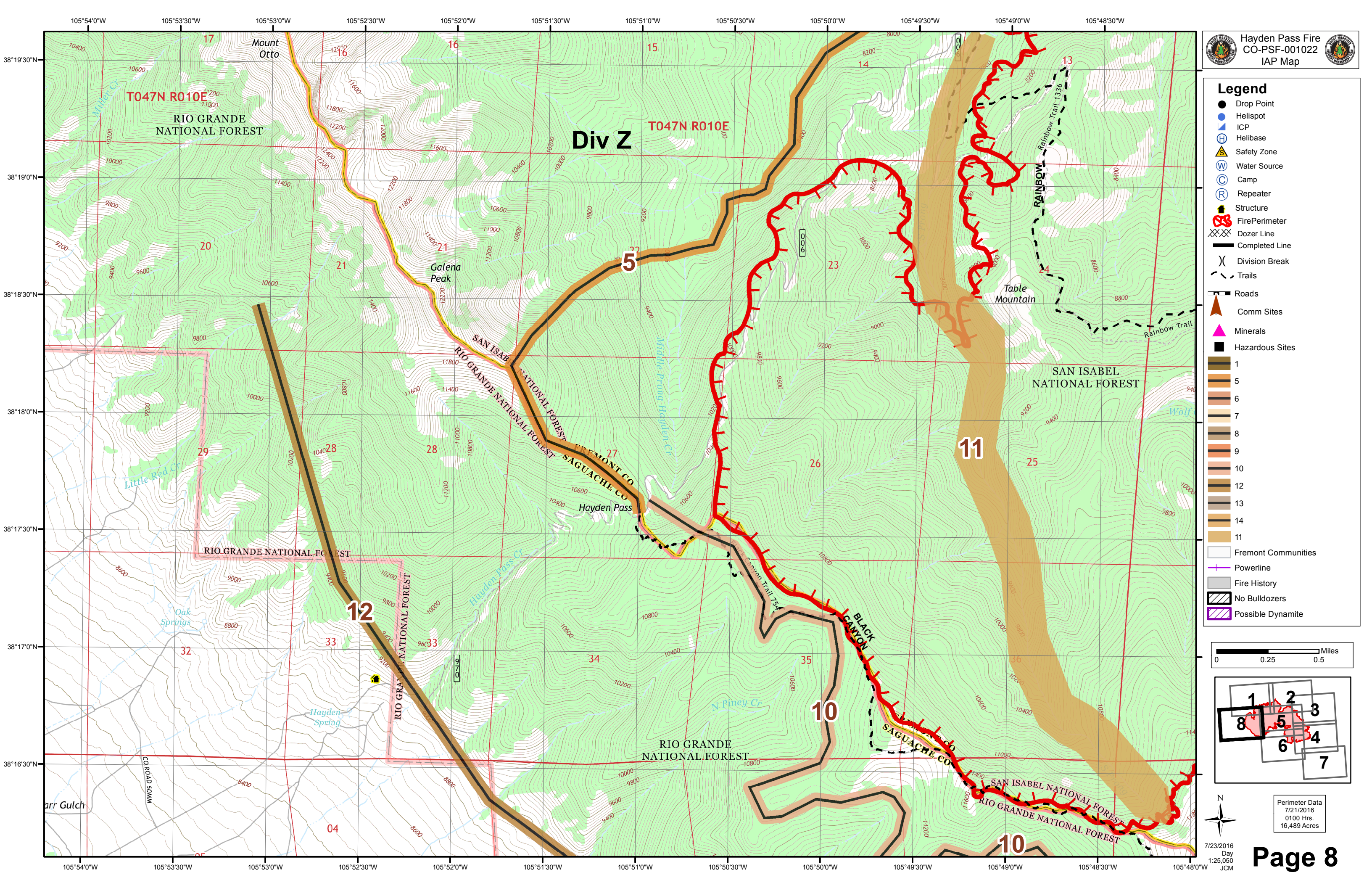
- Drop Point
- Helispot
- ICP
- Helibase
- ▲ Safety Zone
- Water Source
- Camp
- Repeater
- Structure
- FirePerimeter
- XXX Dozer Line
- Completed Line
- ( ) Division Break
- - - Trails
- Roads
- ▲ Comm Sites
- ▲ Minerals
- Hazardous Sites

1
5
6
7
8
9
10
12
13
14
11

- Fremont Communities
- Powerline
- Fire History
- No Bulldozers
- Possible Dynamite

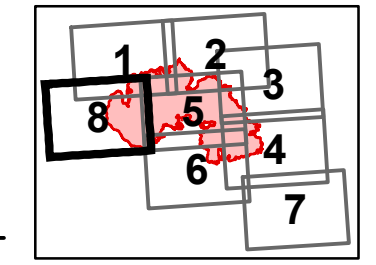
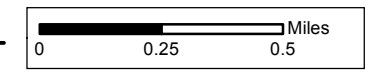


Perimeter Data  
7/21/2016  
0100 Hrs.  
16,489 Acres



### Legend

- Drop Point
- Helispot
- ICP
- Helibase
- ▲ Safety Zone
- Water Source
- Camp
- Repeater
- Structure
- FirePerimeter
- Dozer Line
- Completed Line
- ⌋ Division Break
- - - Trails
- Roads
- ▲ Comm Sites
- ▲ Minerals
- Hazardous Sites
- 1
- 5
- 6
- 7
- 8
- 9
- 10
- 12
- 13
- 14
- 11
- Fremont Communities
- Powerline
- Fire History
- ▨ No Bulldozers
- ▨ Possible Dynamite



Perimeter Data  
7/21/2016  
0100 Hrs.  
16,489 Acres

Hayden Pass Fire  
CO-PSF-001022  
Transportation Map



- Ⓡ Fire Station
- Drop Point
- Ⓜ Helibase
- Helispot
- ▣ ICP
- Ⓟ Incident Base
- ▲ Safety Zone
- WX RAWS Weather Station
- 🔥 Fire Perimeter
- Highways
- - - Roads

7/23/2016  
1:180,000  
ELM

