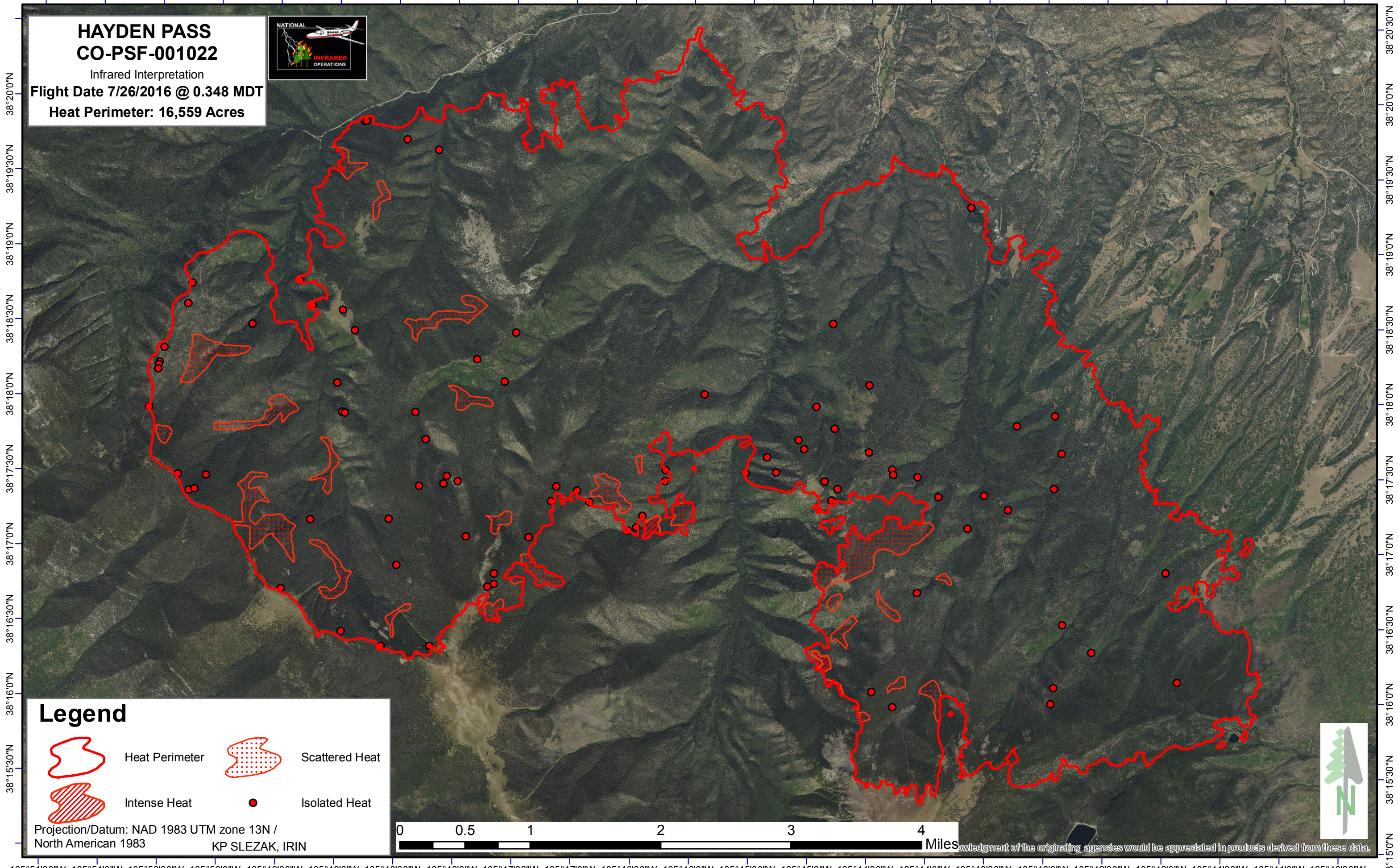


105°51'30"W 105°51'0"W 105°50'30"W 105°50'0"W 105°49'30"W 105°49'0"W 105°48'30"W 105°48'0"W 105°47'30"W 105°47'0"W 105°46'30"W 105°46'0"W 105°45'30"W 105°45'0"W 105°44'30"W 105°44'0"W 105°43'30"W 105°43'0"W 105°42'30"W 105°42'0"W 105°41'30"W 105°41'0"W 105°40'30"W





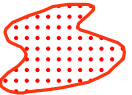

**HAYDEN PASS**  
**CO-PSF-001022**  
Infrared Interpretation  
Flight Date 7/26/2016 @ 0.348 MDT  
Heat Perimeter: 16,559 Acres



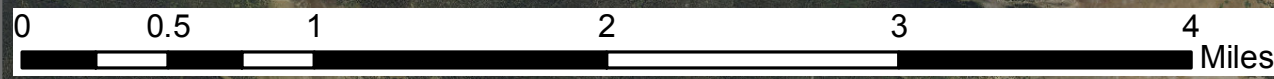
38°20'0"N  
38°19'30"N  
38°19'0"N  
38°18'30"N  
38°18'0"N  
38°17'30"N  
38°17'0"N  
38°16'30"N  
38°16'0"N  
38°15'30"N  
38°15'0"N

38°20'30"N  
38°20'0"N  
38°19'30"N  
38°19'0"N  
38°18'30"N  
38°18'0"N  
38°17'30"N  
38°17'0"N  
38°16'30"N  
38°16'0"N  
38°15'30"N  
38°15'0"N

**Legend**

-  Heat Perimeter
-  Intense Heat
-  Scattered Heat
-  Isolated Heat

Projection/Datum: NAD 1983 UTM zone 13N / North American 1983  
KP SLEZAK, IRIN



Acknowledgment of the originating agencies would be appreciated in products derived from these data.



105°51'30"W 105°51'0"W 105°50'30"W 105°50'0"W 105°49'30"W 105°49'0"W 105°48'30"W 105°48'0"W 105°47'30"W 105°47'0"W 105°46'30"W 105°46'0"W 105°45'30"W 105°45'0"W 105°44'30"W 105°44'0"W 105°43'30"W 105°43'0"W 105°42'30"W 105°42'0"W 105°41'30"W 105°41'0"W 105°40'30"W