

109°53'W 109°52'W 109°51'W 109°50'W 109°49'W 109°48'W 109°47'W 109°46'W 109°45'W 109°44'W 109°43'W 109°42'W 109°41'W 109°40'W 109°39'W 109°38'W 109°37'W 109°36'W 109°35'W 109°34'W 109°33'W 109°32'W 109°31'W 109°30'W 109°29'W 109°28'W

HUNTER PEAK WY-SHF-000428



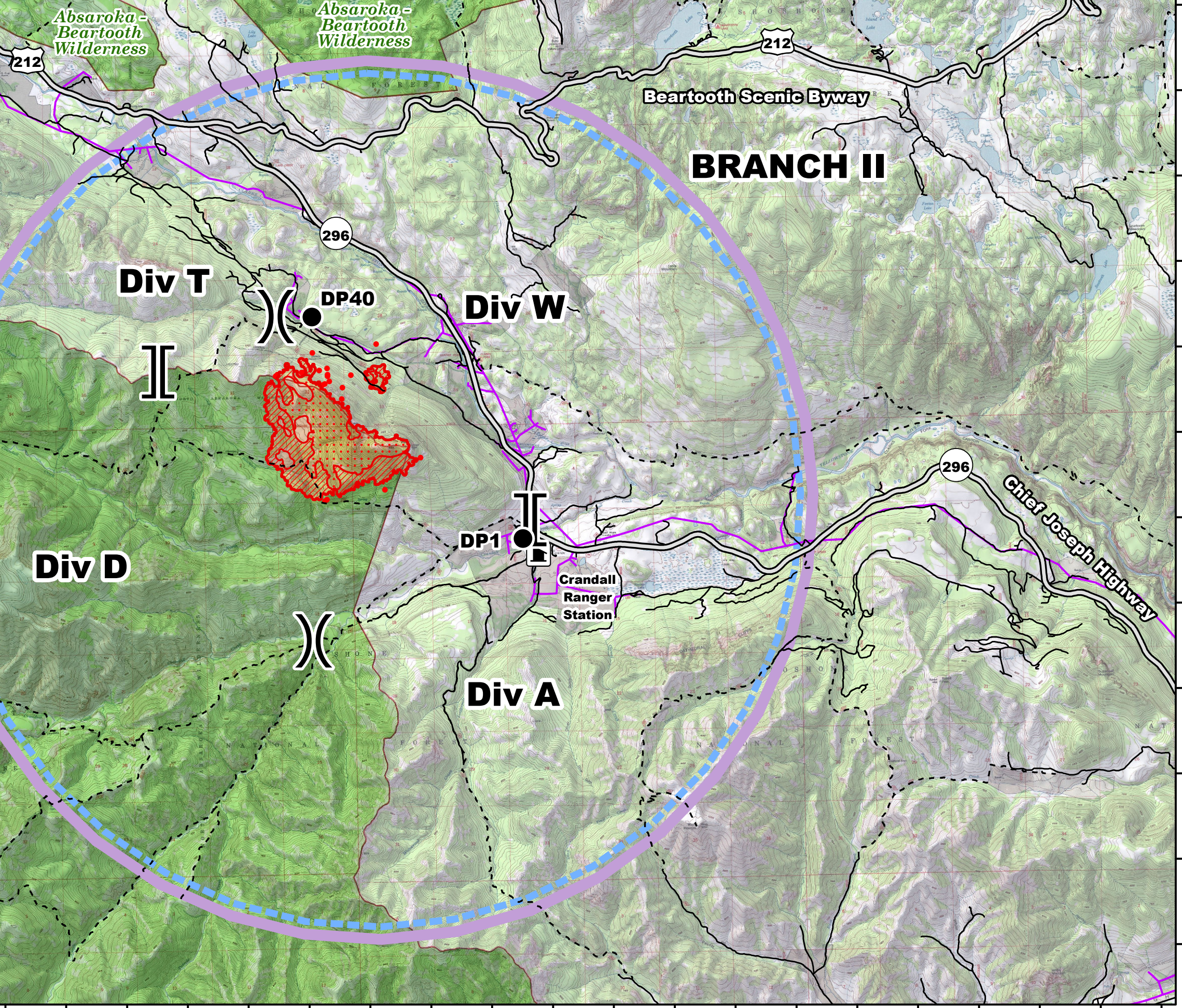
Air Ops Map 8/11/16

IR Perimeter as of 8/11/16 @ 0155 - 1,347 ac.

Datum NAD83


0 0.5 1 1.5 2 Miles


NB 8/11/16 0930






BRANCH I

BRANCH II

 Uncontrolled Fire Edge

 Overhead Utilities

 TFR FDC 6/1056

109°54'W 109°53'W 109°52'W 109°51'W 109°50'W 109°49'W 109°48'W 109°47'W 109°46'W 109°45'W 109°44'W 109°43'W 109°42'W 109°41'W 109°40'W 109°39'W 109°38'W 109°37'W 109°36'W 109°35'W 109°34'W 109°33'W 109°32'W 109°31'W 109°30'W 109°29'W 109°28'W