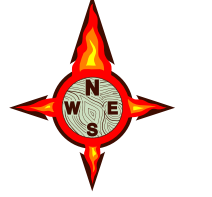


109°47'0"W 109°46'0"W 109°45'0"W 109°44'0"W 109°43'0"W 109°42'0"W 109°41'0"W 109°40'0"W 109°39'0"W 109°38'0"W 109°37'0"W 109°36'0"W 109°35'0"W

# HUNTER PEAK WY-SHF-000428

## Operations Map 8/12/16

IR Perimeter as of 8/12/16 @ 0032 - 1,428 ac.



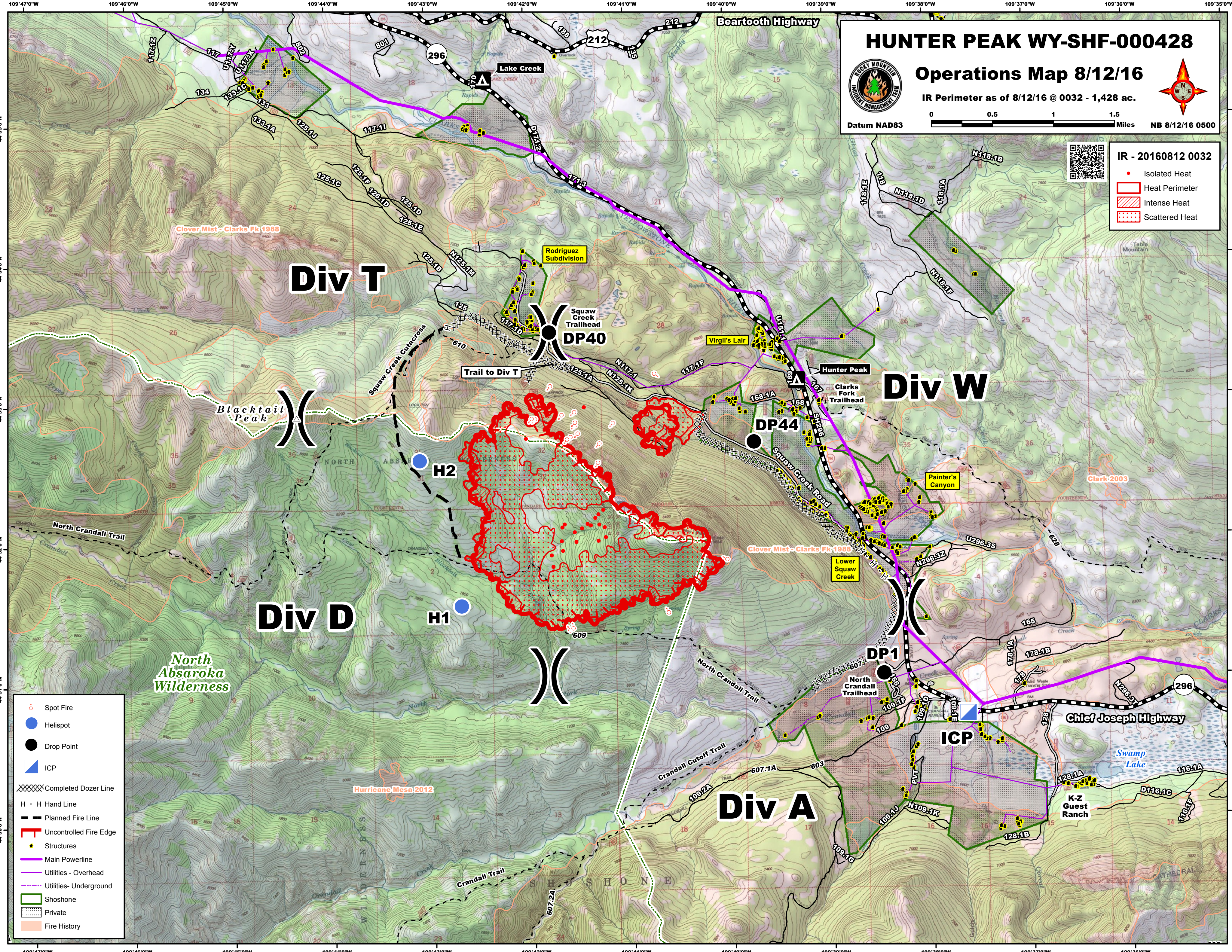
Datum NAD83

NB 8/12/16 0500



### IR - 20160812 0032

- Isolated Heat
- ▭ Heat Perimeter
- ▨ Intense Heat
- ▩ Scattered Heat



# Div T

# Div W

# Div D

# Div A

- Spot Fire
- Helispot
- Drop Point
- ICP
- XXXXX Completed Dozer Line
- H - H Hand Line
- Planned Fire Line
- ▬ Uncontrolled Fire Edge
- Structures
- Main Powerline
- Utilities - Overhead
- Utilities - Underground
- ▭ Shoshone
- ▨ Private
- ▩ Fire History

109°47'0"W 109°46'0"W 109°45'0"W 109°44'0"W 109°43'0"W 109°42'0"W 109°41'0"W 109°40'0"W 109°39'0"W 109°38'0"W 109°37'0"W 109°36'0"W