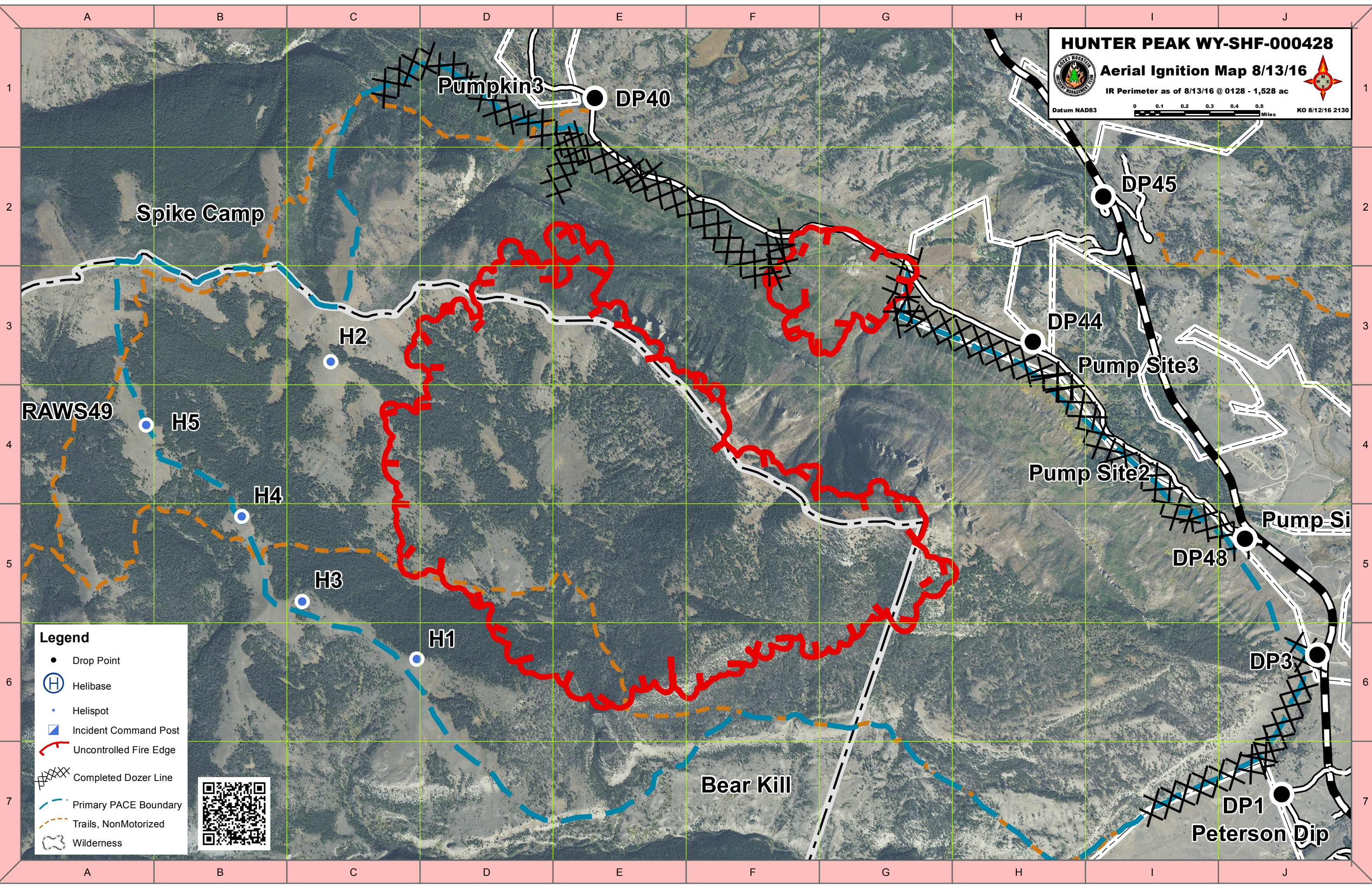


**HUNTER PEAK WY-SHF-000428**  
**Aerial Ignition Map 8/13/16**  
 IR Perimeter as of 8/13/16 @ 0128 - 1,528 ac  
 Datum NAD83  
 0 0.1 0.2 0.3 0.4 0.5 Miles  
 KO 8/12/16 2130



**Legend**

- Drop Point
- Ⓜ Helibase
- Helispot
- ▣ Incident Command Post
- Uncontrolled Fire Edge
- ⓧ Completed Dozer Line
- - - Primary PACE Boundary
- - - Trails, NonMotorized
- Ⓜ Wilderness



A B C D E F G H I J

1  
2  
3  
4  
5  
6  
7

Spike Camp

Pumpkin3

DP40

DP45

DP44

Pump Site3

Pump Site2

Pump Site1

Peterson Dip

DP3

DP48

DP1

H2

H5

H4

H3

H1

RAW549

Bear Kill

Datum NAD83

0 0.1 0.2 0.3 0.4 0.5 Miles

KO 8/12/16 2130