

109°52'W 109°51'W 109°50'W 109°49'W 109°48'W 109°47'W 109°46'W 109°45'W 109°44'W 109°43'W 109°42'W 109°41'W 109°40'W 109°39'W 109°38'W 109°37'W 109°36'W 109°35'W 109°34'W 109°33'W 109°32'W 109°31'W 109°30'W 109°29'W 109°28'W 109°27'W 109°26'W

HUNTER PEAK WY-SHF-000428



Air Ops Map 8/14/16

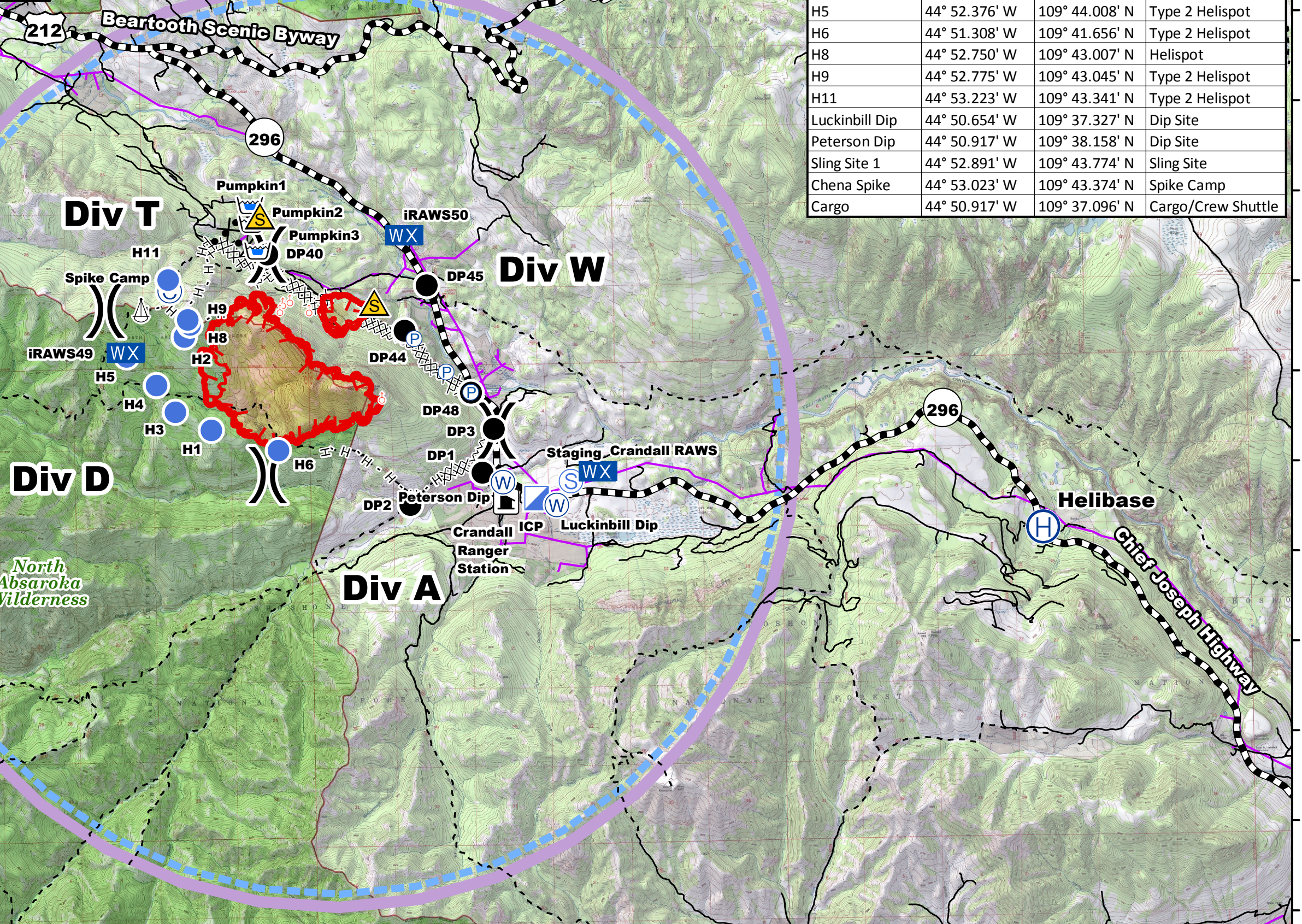
IR Perimeter as of 8/13/16 @ 0128 - 1,528 ac.



Datum NAD83 0 0.5 1 1.5 2 Miles

NB 8/13/16 2330

Absaroka-Beartooth Wilderness



Name	Lat DDM	Long DDM	Type of Location
Hunter Helibase	44° 50.316' W	109° 29.725' N	Helibase
H1	44° 51.546' W	109° 42.700' N	Type 2 Helispot
H2	44° 52.586' W	109° 43.099' N	Type 2 Helispot
H3	44° 51.753' W	109° 43.257' N	Type 2 Helispot
H4	44° 52.053' W	109° 43.546' N	Type 2 Helispot
H5	44° 52.376' W	109° 44.008' N	Type 2 Helispot
H6	44° 51.308' W	109° 41.656' N	Type 2 Helispot
H8	44° 52.750' W	109° 43.007' N	Helispot
H9	44° 52.775' W	109° 43.045' N	Type 2 Helispot
H11	44° 53.223' W	109° 43.341' N	Type 2 Helispot
Luckinbill Dip	44° 50.654' W	109° 37.327' N	Dip Site
Peterson Dip	44° 50.917' W	109° 38.158' N	Dip Site
Sling Site 1	44° 52.891' W	109° 43.774' N	Sling Site
Chena Spike	44° 53.023' W	109° 43.374' N	Spike Camp
Cargo	44° 50.917' W	109° 37.096' N	Cargo/Crew Shuttle

- Spot Fire
- Sling Site
- Drop Point
- Helispot
- Camp
- Helibase
- Pump Site
- Staging Area
- Water Source
- Pumpkin
- Safety Zone
- Incident Command Post
- Mobile Weather Unit
- Completed Dozer Line
- Proposed Dozer Line
- H - H Hand Line
- Uncontrolled Fire Edge

109°52'W 109°51'W 109°50'W 109°49'W 109°48'W 109°47'W 109°46'W 109°45'W 109°44'W 109°43'W 109°42'W 109°41'W 109°40'W 109°39'W 109°38'W 109°37'W 109°36'W 109°35'W 109°34'W 109°33'W 109°32'W 109°31'W 109°30'W 109°29'W 109°28'W 109°27'W 109°26'W

44°57'N
44°56'N
44°55'N
44°54'N
44°53'N
44°52'N
44°51'N
44°50'N
44°49'N
44°48'N
44°47'N
44°46'N

44°57'N
44°56'N
44°55'N
44°54'N
44°53'N
44°52'N
44°51'N
44°50'N
44°49'N
44°48'N
44°47'N
44°46'N