

109°47'0"W 109°46'0"W 109°45'0"W 109°44'0"W 109°43'0"W 109°42'0"W 109°41'0"W 109°40'0"W 109°39'0"W 109°38'0"W 109°37'0"W 109°36'0"W 109°35'0"W

HUNTER PEAK WY-SHF-000428




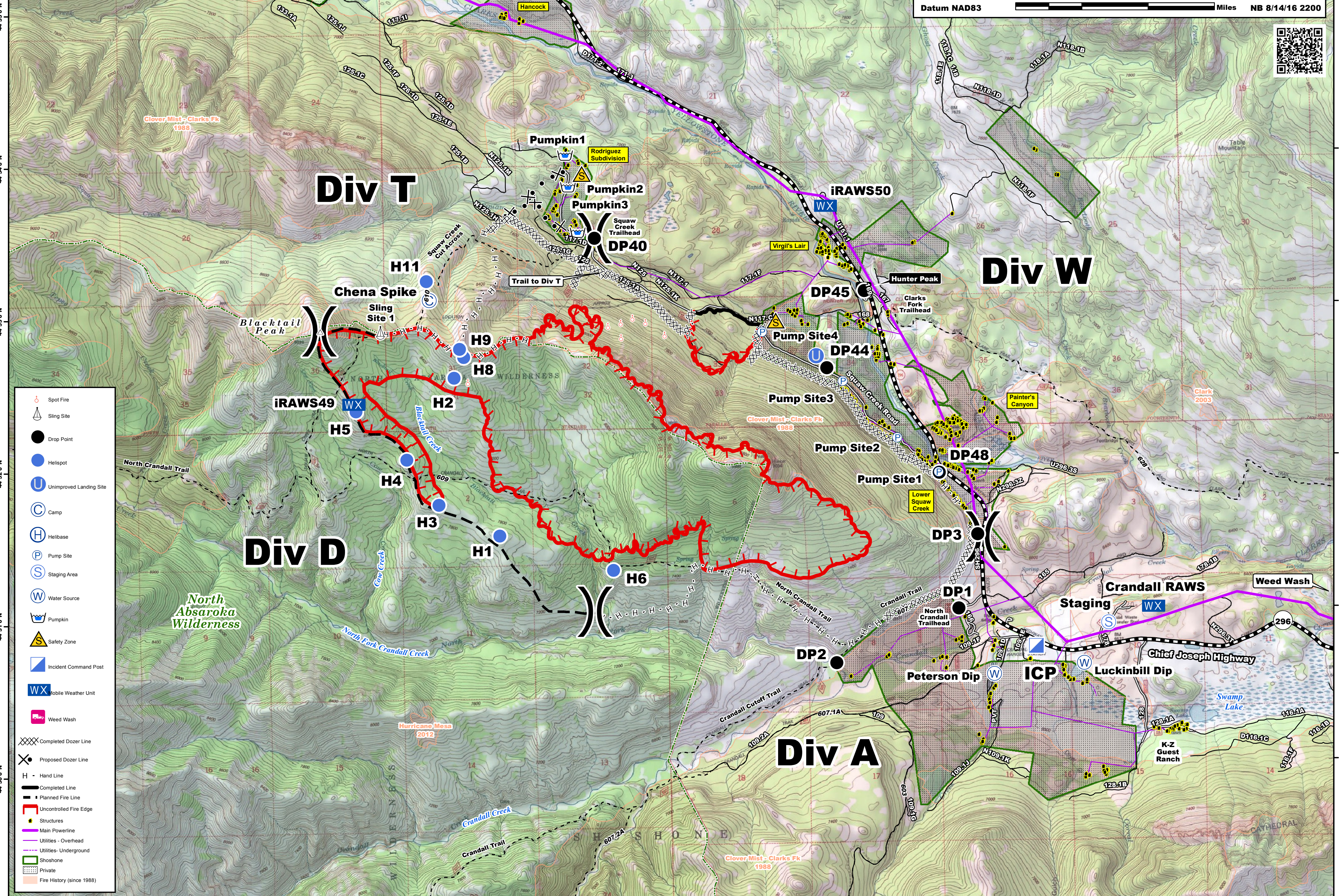
Operations Map 8/15/16

Perimeter as of 8/14/16 @ 2100 - 2,269 ac.

Datum NAD83

0 0.5 1 1.5 Miles

NB 8/14/16 2200

-  Spot Fire
-  Sling Site
-  Drop Point
-  Helispot
-  Unimproved Landing Site
-  Camp
-  Helibase
-  Pump Site
-  Staging Area
-  Water Source
-  Pumpkin
-  Safety Zone
-  Incident Command Post
-  Mobile Weather Unit
-  Weed Wash
-  Completed Dozer Line
-  Proposed Dozer Line
-  Hand Line
-  Completed Line
-  Planned Fire Line
-  Uncontrolled Fire Edge
-  Structures
-  Main Powerline
-  Utilities - Overhead
-  Utilities - Underground
-  Shoshone
- Private
- Fire History (since 1988)

109°47'0"W 109°46'0"W 109°45'0"W 109°44'0"W 109°43'0"W 109°42'0"W 109°41'0"W 109°40'0"W 109°39'0"W 109°38'0"W 109°37'0"W 109°36'0"W