

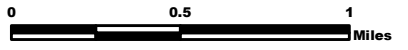
# HUNTER PEAK WY-SHF-000428



## Air Ops Map 8/17/16

Perimeter as of 8/16/16 @ 2030 - 3,294 ac.

Datum NAD83



NB 8/16/16 2100



TFR FDC 6/1056

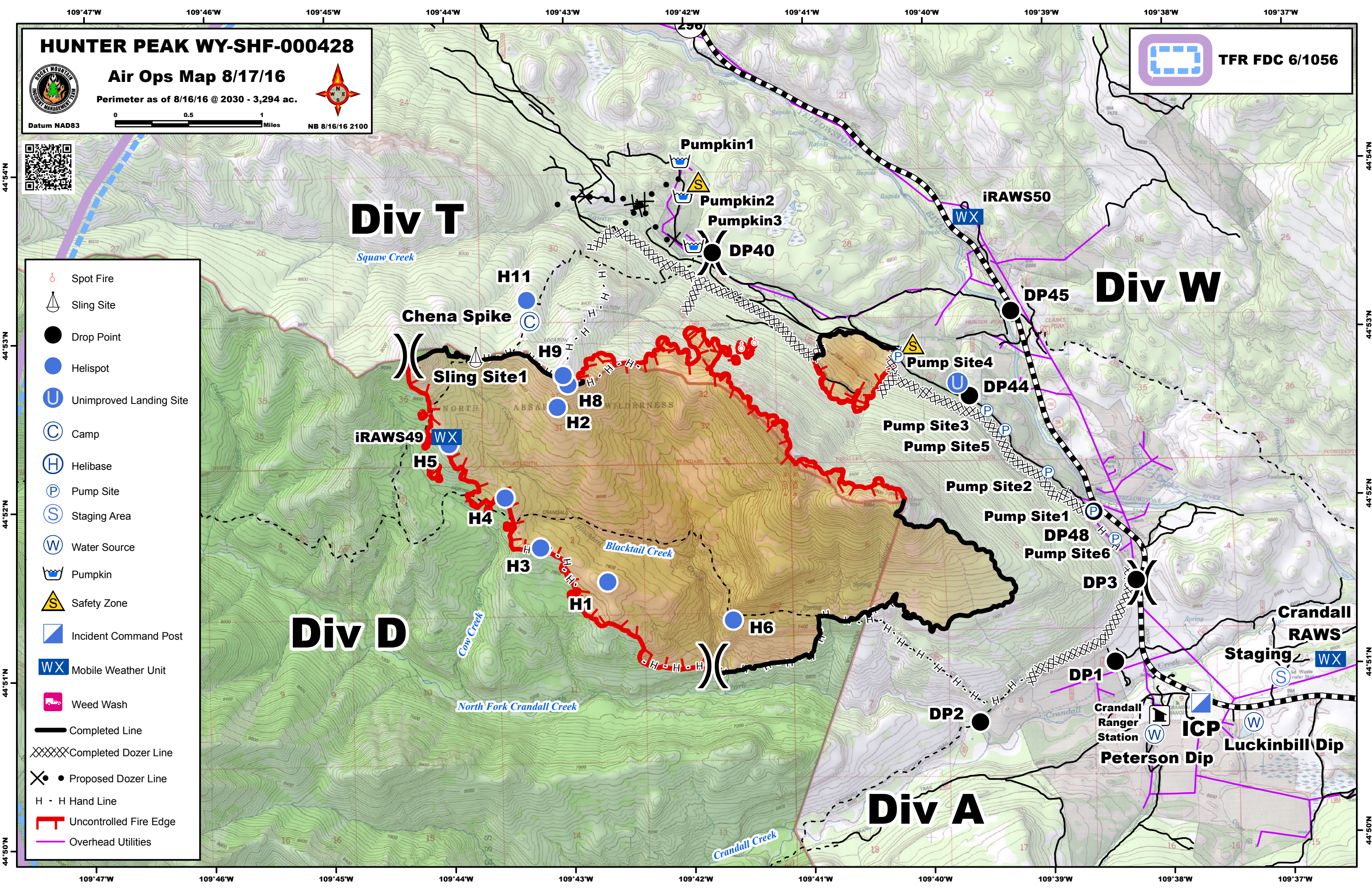
# Div T

# Div W

# Div D

# Div A

- Spot Fire
- Sling Site
- Drop Point
- Helispot
- Unimproved Landing Site
- Camp
- Helibase
- Pump Site
- Staging Area
- Water Source
- Pumpkin
- Safety Zone
- Incident Command Post
- Mobile Weather Unit
- Weed Wash
- Completed Line
- Completed Dozer Line
- Proposed Dozer Line
- H - H Hand Line
- Uncontrolled Fire Edge
- Overhead Utilities



<b>Name</b>	<b>Type of Location</b>	<b>Long DDM</b>	<b>Lat DDM</b>
Hunter Helibase	Helibase	109° 29.732'W	44° 50.319'N
H1	Type 2 Helispot	109° 42.700'W	44° 51.546'N
H2	Type 2 Helispot	109° 43.099'W	44° 52.586'N
H3	Type 2 Helispot	109° 43.257'W	44° 51.753'N
H4	Type 2 Helispot	109° 43.546'W	44° 52.053'N
H5	Type 2 Helispot	109° 44.008'W	44° 52.376'N
H6	Type 2 Helispot	109° 41.656'W	44° 51.308'N
H8	Helispot	109° 43.007'W	44° 52.720'N
H9	Type 2 Helispot	109° 43.045'W	44° 52.775'N
H11	Type 2 Helispot	109° 43.341'W	44° 53.223'N
Chena Spike	Spike Camp	109° 43.318'W	44° 53.098'N
Luckinbill Dip	Dip Site	109° 37.327'W	44° 50.654'N
Peterson Dip	Dip Site	109° 38.158'W	44° 50.591'N
DP1	Drop Point	109° 38.475'W	44° 51.026'N
DP2	Drop Point	109° 39.610'W	44° 50.680'N
DP3	Drop Point	109° 38.29'W	44° 51.510'N
DP40	Drop Point	109° 41.784'W	44° 53.490'N
DP44	Drop Point	109° 39.657'W	44° 52.617'N
DP45	Drop Point	109° 39.300'W	44° 53.118'N
DP48	Drop Point	109° 38.635'W	44° 51.918'N
ICP	Incident Command Post	109° 37.768'W	44° 50.771'N
Crandall RAWS	Mobile Weather Unit	109° 36.684'W	44° 51.018'N
iRAWS49	Mobile Weather Unit	109° 44.032'W	44° 52.421'N
iRAWS50	Mobile Weather Unit	109° 39.648'W	44° 53.678'N
Weed Wash	Weed Wash	109° 33.777'W	44° 50.649'N
Pump Site1	Pump Site	109° 38.641'W	44° 51.921'N
Pump Site2	Pump Site	109° 39.018'W	44° 52.151'N
Pump Site3	Pump Site	109° 39.512'W	44° 52.527'N
Pump Site4	Pump Site	109° 40.250'W	44° 52.858'N
Pumpkin1	Water Source	109° 42.041'W	44° 54.037'N
Pumpkin2	Water Source	109° 42.020'W	44° 53.828'N
Pumpkin3	Water Source	109° 41.937'W	44° 53.529'N
	Safety Zone	109° 40.124'W	44° 52.928'N
	Safety Zone	109° 41.892'W	44° 53.910'N
Sling Site1	Sling Site	109° 43.774'W	44° 52.891'N
Staging	Staging Area	109° 37.096'W	44° 50.917'N
	Unimproved Landing Site	109° 39.753'W	44° 52.695'N