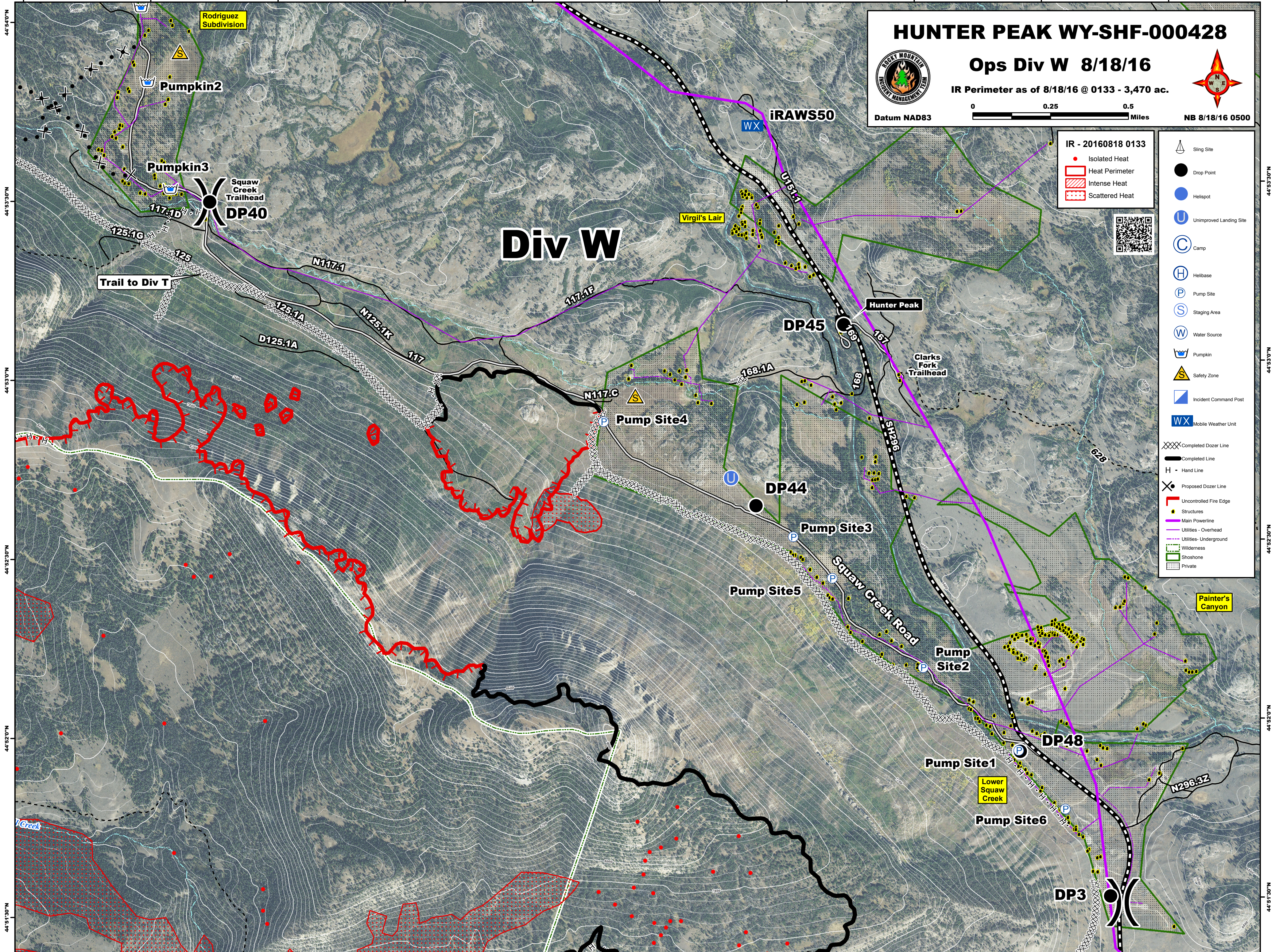


109°42'30"W 109°42'0"W 109°41'30"W 109°41'0"W 109°40'30"W 109°40'0"W 109°39'30"W 109°39'0"W 109°38'30"W 109°38'0"W



HUNTER PEAK WY-SHF-000428

Ops Div W 8/18/16

IR Perimeter as of 8/18/16 @ 0133 - 3,470 ac.

Datum NAD83

0 0.25 0.5 Miles

NB 8/18/16 0500

IR - 20160818 0133

- Isolated Heat
- Heat Perimeter
- Intense Heat
- Scattered Heat

- Sling Site
- Drop Point
- Helispot
- Unimproved Landing Site
- Camp
- Helibase
- Pump Site
- Staging Area
- Water Source
- Pumpkin
- Safety Zone
- Incident Command Post
- Mobile Weather Unit
- Completed Dozer Line
- Completed Line
- Hand Line
- Proposed Dozer Line
- Uncontrolled Fire Edge
- Structures
- Main Powerline
- Utilities - Overhead
- Utilities - Underground
- Wilderness
- Shoshone
- Private

Div W

Rodriguez Subdivision

Pumpkin2

Pumpkin3

Squaw Creek Trailhead
DP40

Virgil's Lair

iRAWS50

Hunter Peak

DP45

Clarks Fork Trailhead

Pump Site4

DP44

Pump Site3

Pump Site5

Pump Site2

Pump Site1

Pump Site6

DP48

Lower Squaw Creek

DP3

Painter's Canyon

109°42'30"W 109°42'0"W 109°41'30"W 109°41'0"W 109°40'30"W 109°40'0"W 109°39'30"W 109°39'0"W 109°38'30"W 109°38'0"W

44°54'0"N
44°53'30"N
44°53'0"N
44°52'30"N
44°52'0"N
44°51'30"N

44°54'0"N
44°53'30"N
44°53'0"N
44°52'30"N
44°52'0"N
44°51'30"N