

109°44'30"W 109°44'W 109°43'30"W 109°43'W 109°42'30"W 109°42'W 109°41'30"W 109°41'W 109°40'30"W 109°40'W 109°39'30"W 109°39'W 109°38'30"W 109°38'W



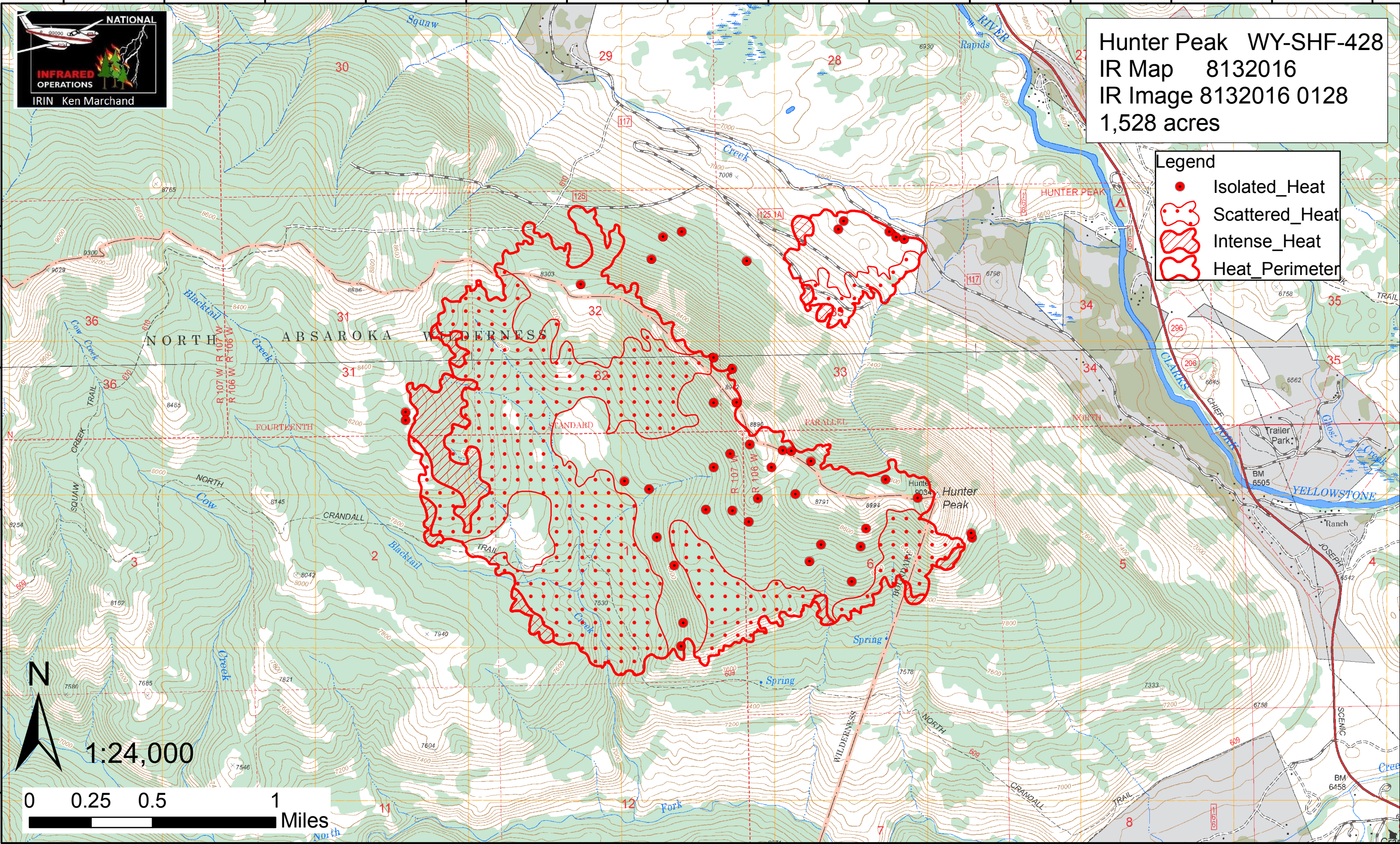
Hunter Peak WY-SHF-428
IR Map 8132016
IR Image 8132016 0128
1,528 acres

Legend

- Isolated_Heat
- ⊞ Scattered_Heat
- ▨ Intense_Heat
- ⬮ Heat_Perimeter

44°53'30"N
44°53'N
44°52'30"N
44°52'N
44°51'30"N
44°51'N

44°53'30"N
44°53'N
44°52'30"N
44°52'N
44°51'30"N
44°51'N



0 0.25 0.5 1 Miles

109°44'30"W 109°44'W 109°43'30"W 109°43'W 109°42'30"W 109°42'W 109°41'30"W 109°41'W 109°40'30"W 109°40'W 109°39'30"W 109°39'W 109°38'30"W 109°38'W