

109°44'30"W 109°44'W 109°43'30"W 109°43'W 109°42'30"W 109°42'W 109°41'30"W 109°41'W 109°40'30"W 109°40'W 109°39'30"W 109°39'W 109°38'30"W 109°38'W

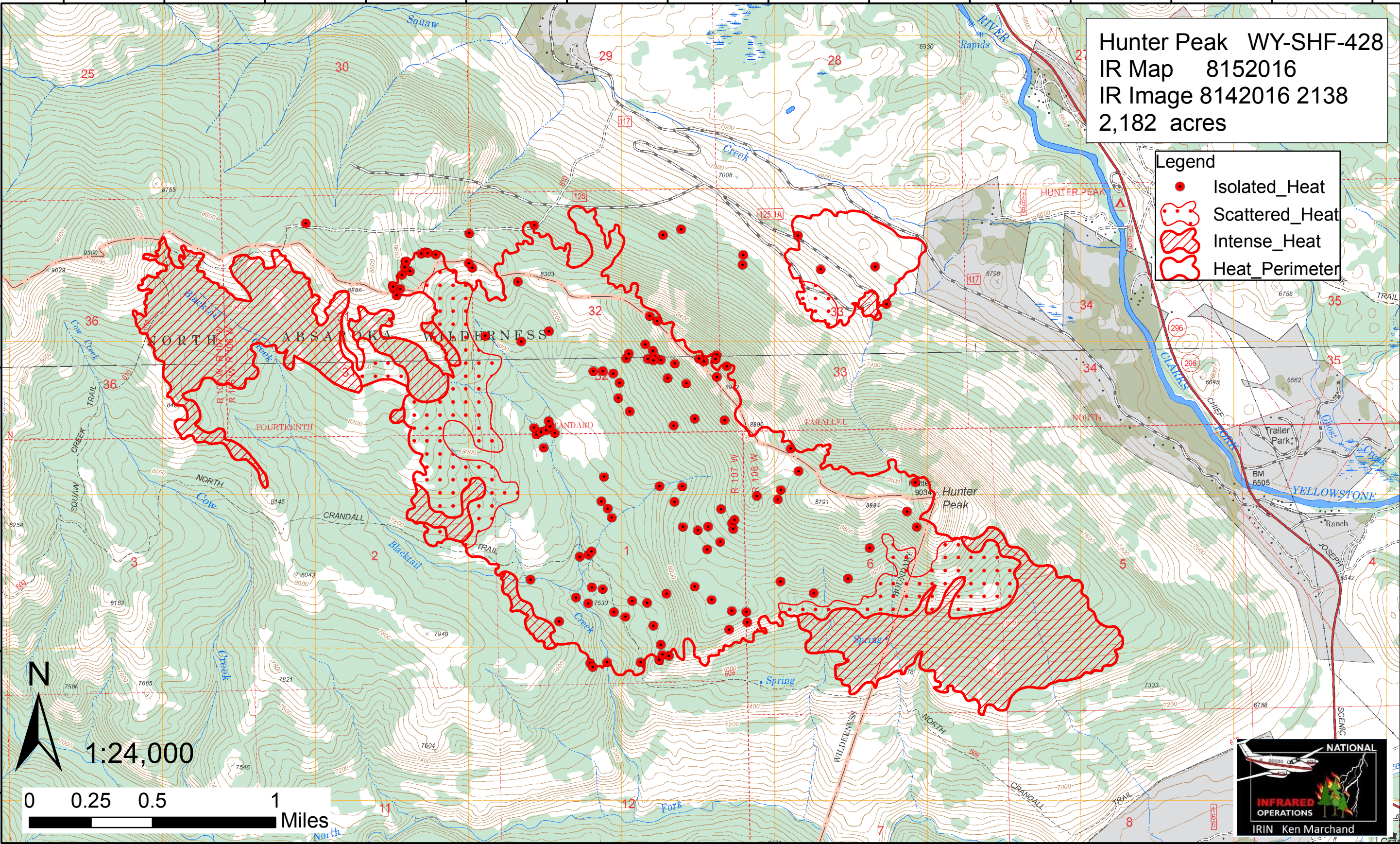
44°53'30"N
44°53'N
44°52'30"N
44°52'N
44°51'30"N
44°51'N

44°53'30"N
44°53'N
44°52'30"N
44°52'N
44°51'30"N
44°51'N

Hunter Peak WY-SHF-428
IR Map 8152016
IR Image 8142016 2138
2,182 acres

Legend

- Isolated_Heat
- ⊞ Scattered_Heat
- ▨ Intense_Heat
- ⬭ Heat_Perimeter



1:24,000



109°44'30"W 109°44'W 109°43'30"W 109°43'W 109°42'30"W 109°42'W 109°41'30"W 109°41'W 109°40'30"W 109°40'W 109°39'30"W 109°39'W 109°38'30"W 109°38'W