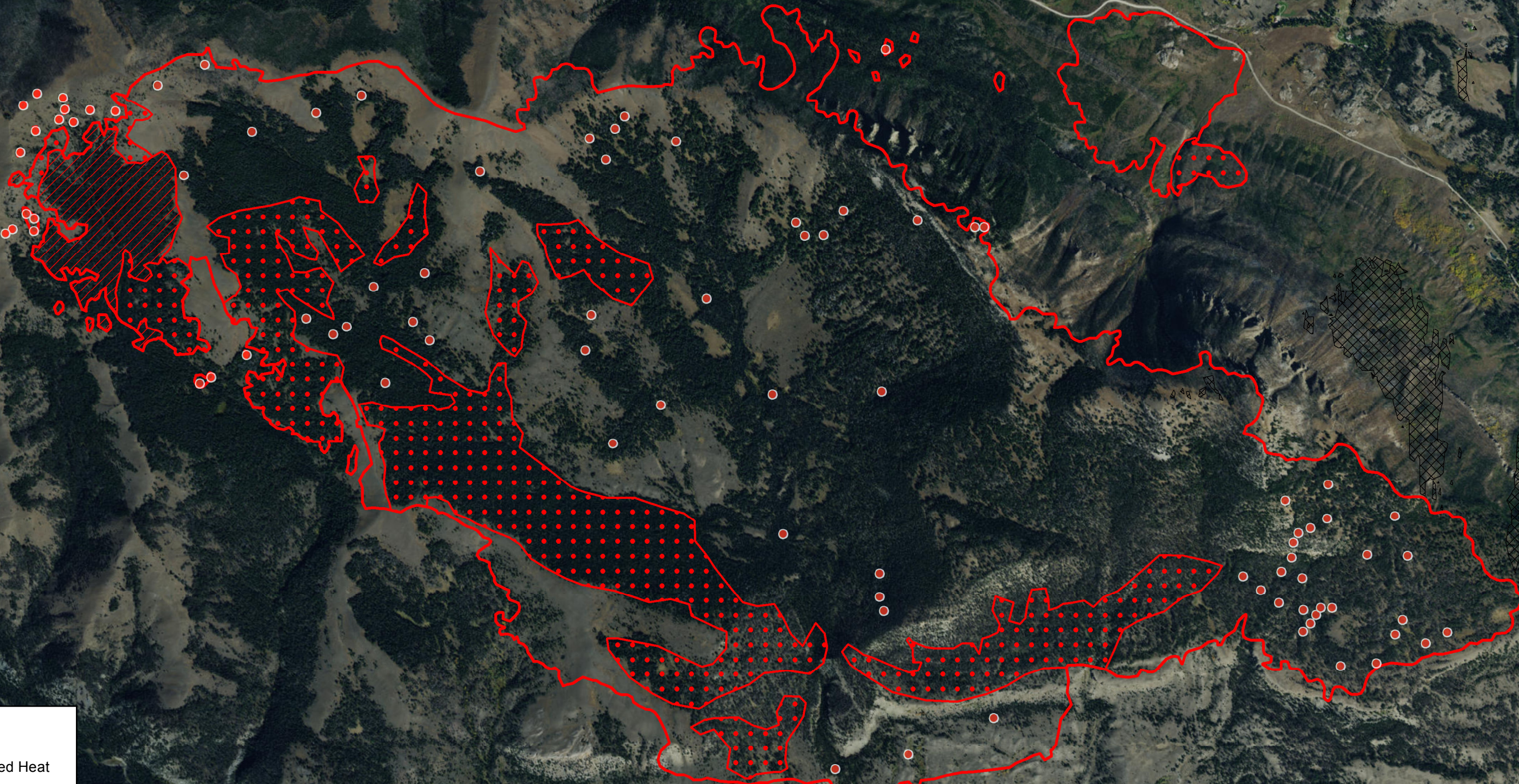


109°45'0"W 109°44'30"W 109°44'0"W 109°43'30"W 109°43'0"W 109°42'30"W 109°42'0"W 109°41'30"W 109°41'0"W 109°40'30"W 109°40'0"W 109°39'30"W 109°39'0"W



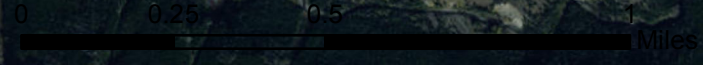
# Hunter Peak Incident WY-SHF-428 Infrared Map

Imagery Date: 8/18/2016 @ 0133 MDT  
Interpreted Acres: 3,470 acres  
IRIN: Maximillian Wahlberg



## Legend

- Isolated Heat
- } Heat Perimeter
- / / / / Intense Heat
- ● ● ● Scattered Heat
- X X X X Cloud Cover



Source: Esri, DigitalGlobe, GeoEye, Earthstar Geographics, CNES/Airbus DS, USDA, USGS, AEX, Getmapping, Aerogrid, IGN, IGP, swisstopo, and the GIS User Community

109°45'0"W 109°44'30"W 109°44'0"W 109°43'30"W 109°43'0"W 109°42'30"W 109°42'0"W 109°41'30"W 109°41'0"W 109°40'30"W 109°40'0"W 109°39'30"W 109°39'0"W

44°53'30"N  
44°53'0"N  
44°52'30"N  
44°52'0"N  
44°51'30"N  
44°51'0"N

44°53'0"N  
44°52'30"N  
44°52'0"N  
44°51'30"N  
44°51'0"N