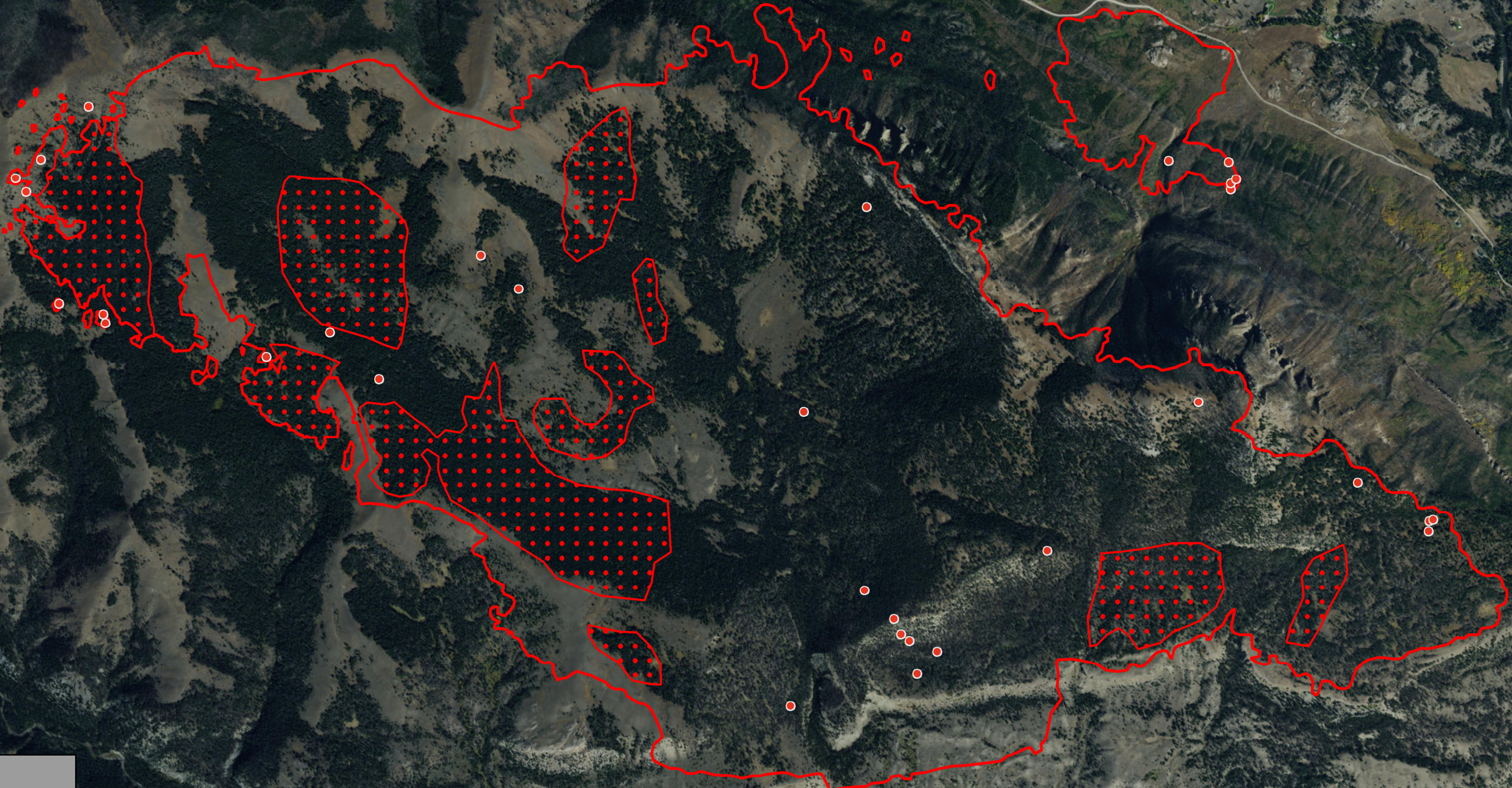


109°45'0"W 109°44'30"W 109°44'0"W 109°43'30"W 109°43'0"W 109°42'30"W 109°42'0"W 109°41'30"W 109°41'0"W 109°40'30"W 109°40'0"W 109°39'30"W 109°39'0"W



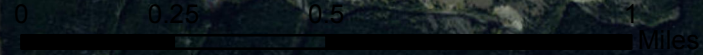
Hunter Peak Incident WY-SHF-000428 Infrared Map

Imagery Date: 8/20/2016 @ 0119 MDT
Interpreted Acres: 3,478 acres
IRIN: Maximillian Wahlberg



Legend

- Heat Perimeter
- Intense Heat
- Scattered Heat



Source: Esri, DigitalGlobe, GeoEye, Earthstar Geographics, CNES/Airbus DS, USDA, USGS, AEX, Getmapping, Aerogrid, IGN, IGP, swisstopo, and the GIS User Community

109°45'0"W 109°44'30"W 109°44'0"W 109°43'30"W 109°43'0"W 109°42'30"W 109°42'0"W 109°41'30"W 109°41'0"W 109°40'30"W 109°40'0"W 109°39'30"W 109°39'0"W

44°53'30"N
44°53'0"N
44°52'30"N
44°52'0"N
44°51'30"N
44°51'0"N

44°53'0"N
44°52'30"N
44°52'0"N
44°51'30"N
44°51'0"N