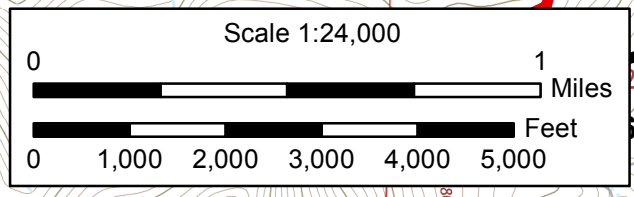
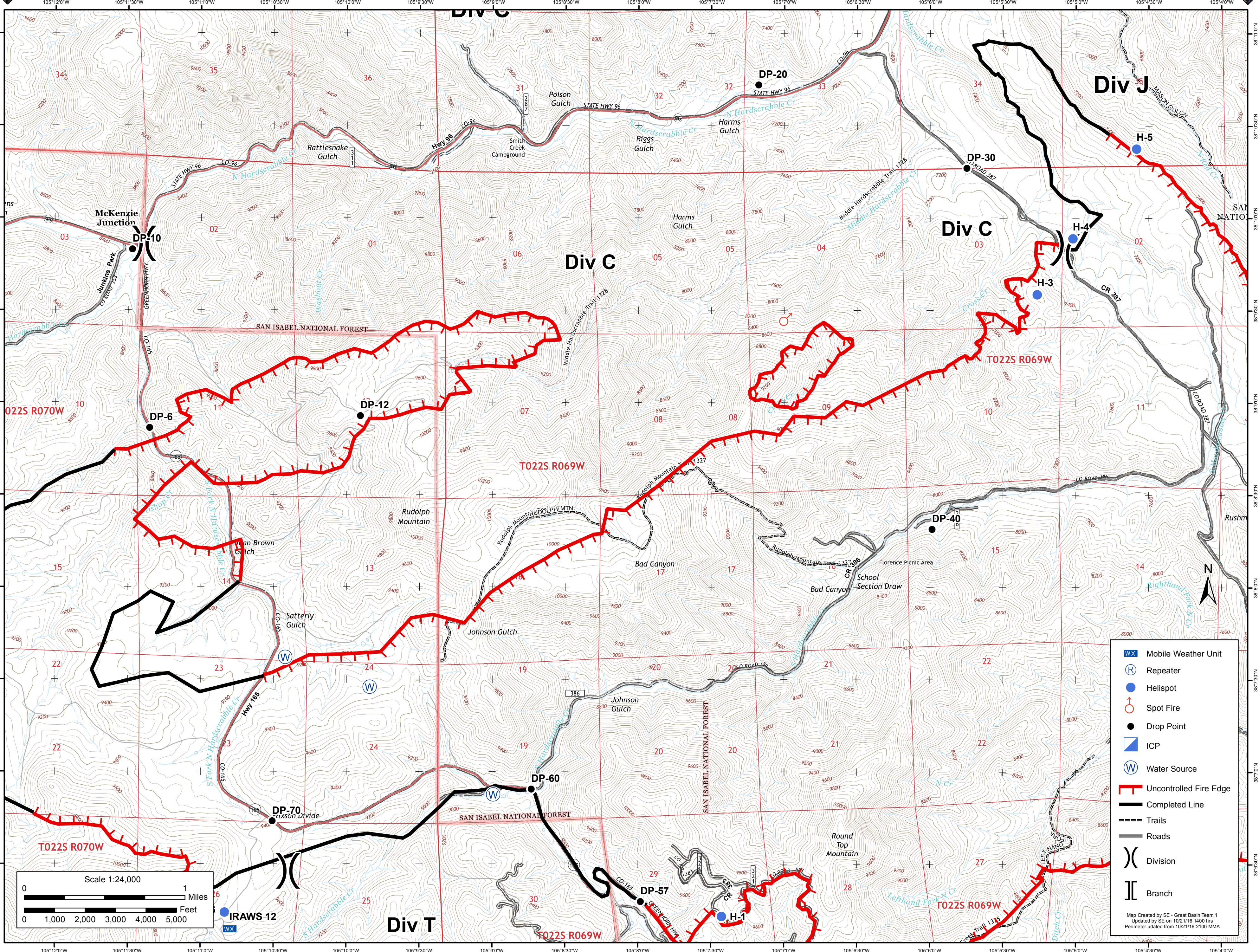




17,809 Acres

Junkins Fire - Division C

October 22nd, 2016



- Mobile Weather Unit
 - Repeater
 - Helispot
 - Spot Fire
 - Drop Point
 - ICP
 - Water Source
 - Uncontrolled Fire Edge
 - Completed Line
 - Trails
 - Roads
 - Division
 - Branch
- Map Created by SE - Great Basin Team 1
 Updated by SE on 10/21/16 1400 hrs
 Perimeter updated from 10/21/16 2100 MMA