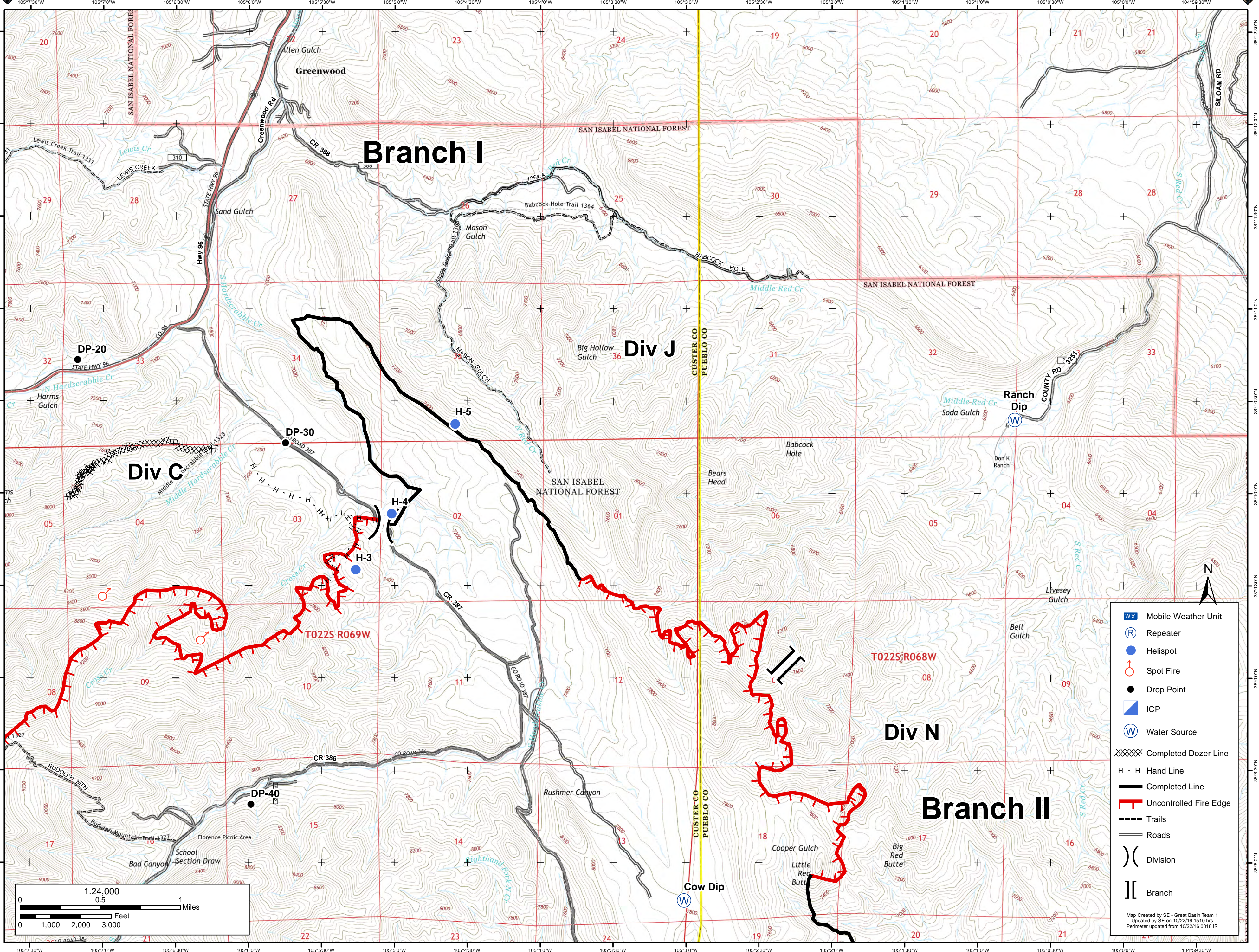




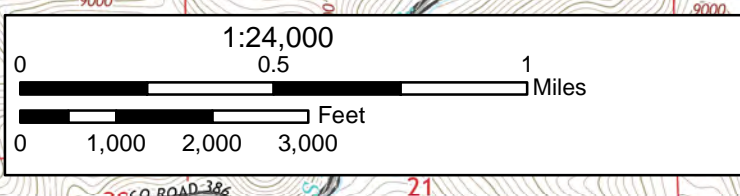
18,099 Acres

Junkins Fire Divison J

October 23rd, 2016



- Mobile Weather Unit
- Repeater
- Helispot
- Spot Fire
- Drop Point
- ICP
- Water Source
- Completed Dozer Line
- Hand Line
- Completed Line
- Uncontrolled Fire Edge
- Trails
- Roads
- Division
- Branch



Map Created by SE - Great Basin Team 1
 Updated by SE on 10/22/16 1510 hrs
 Perimeter updated from 10/22/16 0018 IR