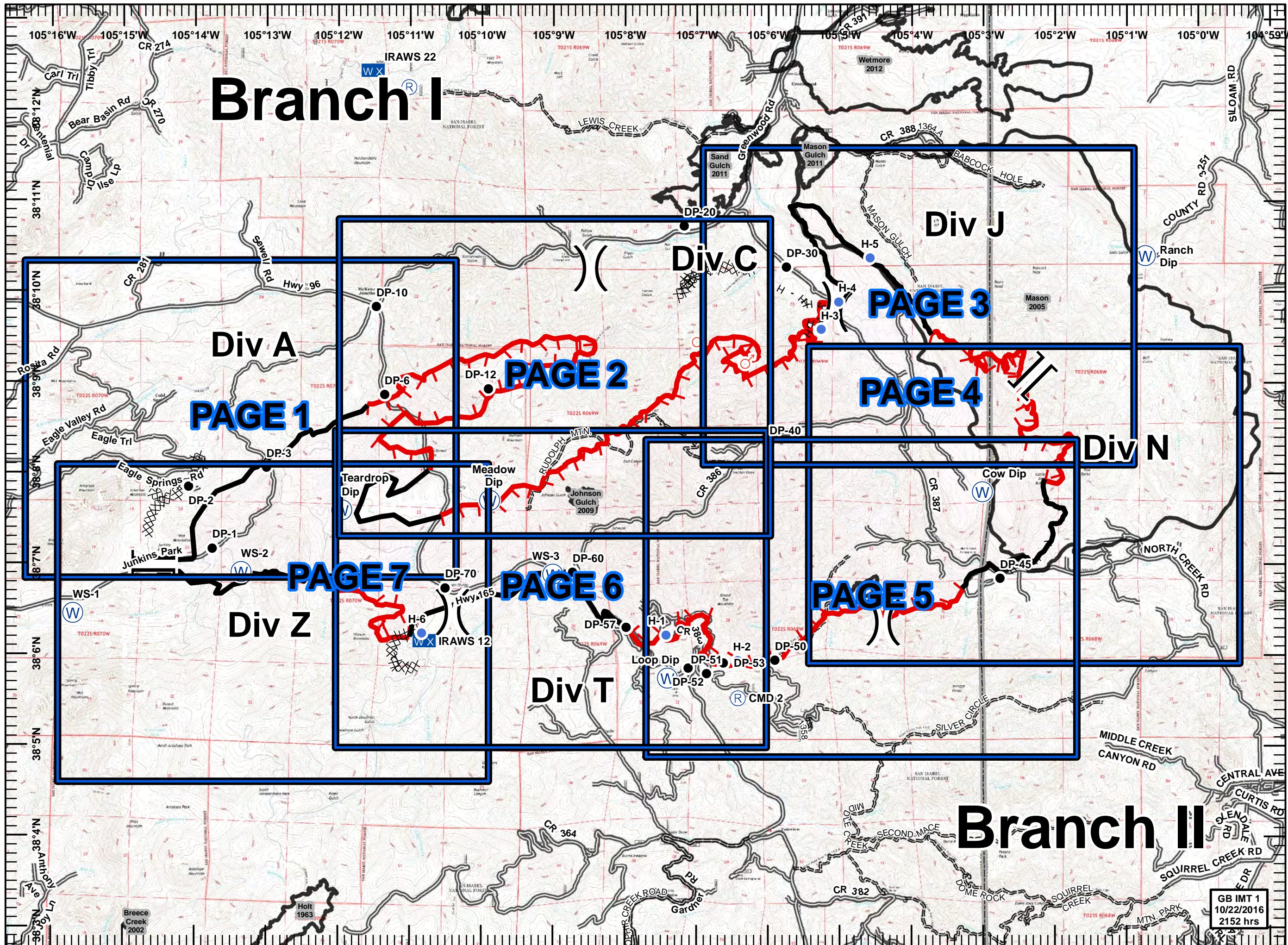
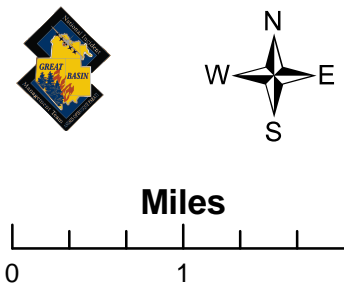


Junkins Fire
CO-CUX-002046
10/23/16
IAP
Day
NAD 83

18,099 Acres
 10/22/2016 1730 hrs

- Division
- Branch
- Mobile Weather Unit
- Repeater
- Helispot
- Spot Fire
- Drop Point
- ICP
- Water Source
- Completed Dozer Line
- Completed Line
- Hand Line
- Uncontrolled Fire Edge
- Trails
- Roads

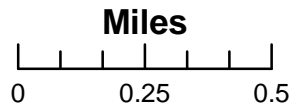
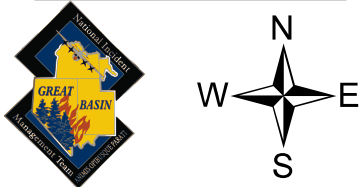
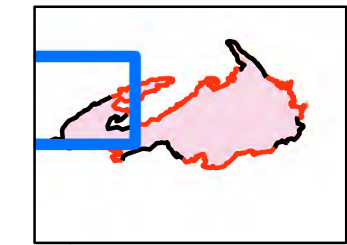


GB IMT 1
 10/22/2016
 2152 hrs

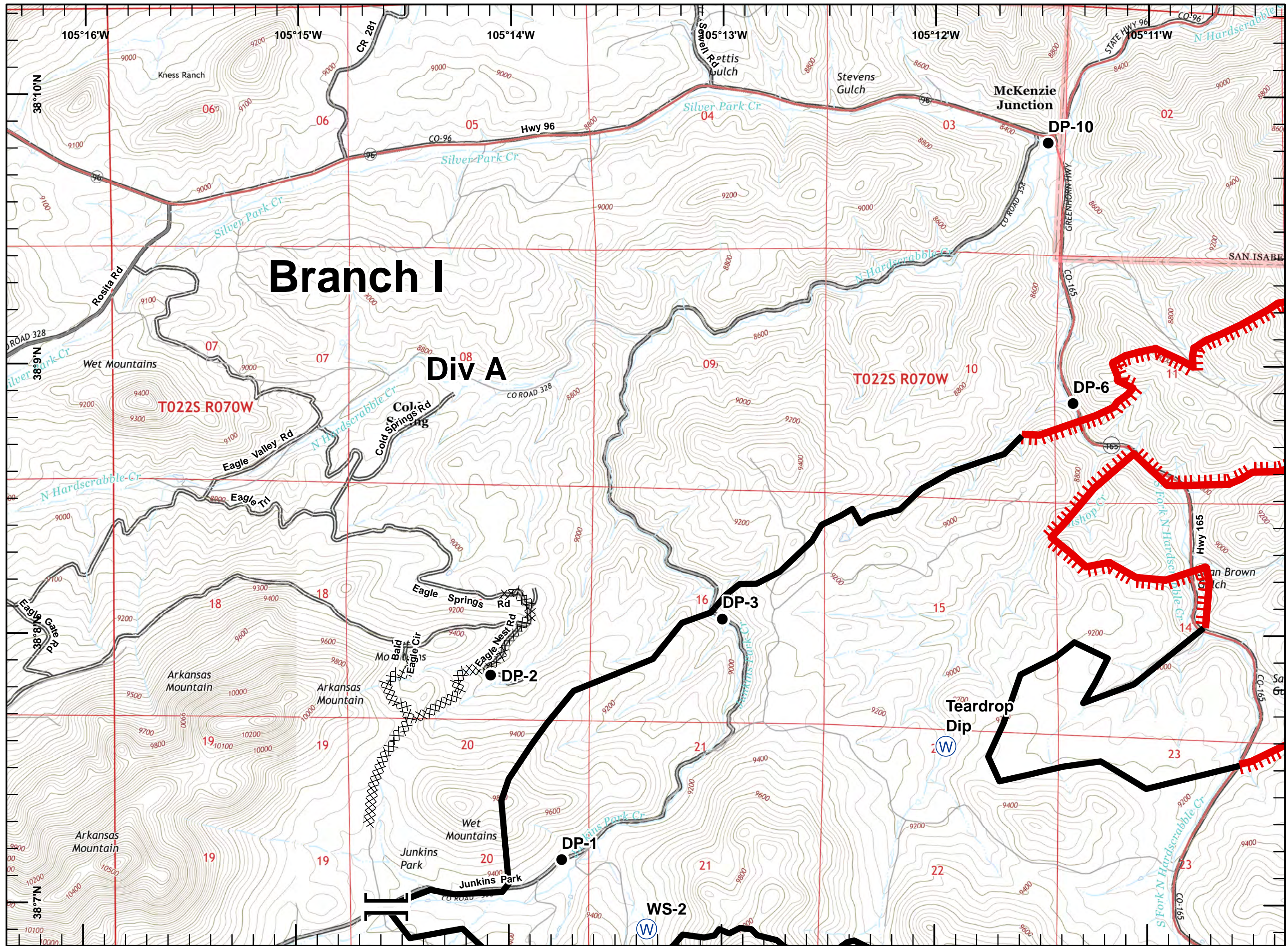
Junkins Fire
CO-CUX-002046
10/23/16
Day
NAD 83

PAGE 1 Div A

- Hot Spot
- Drop Point
- Helispot
- R Repeater
- WX Mobile Weather Unit
- I ICP
- W Water Source
- ⬆ Spot Fire
-) (Division
-] [Branch
- Completed Dozer Line
- Completed Line
- Hand Line
- Uncontrolled Fire Edge
- Trails
- Roads



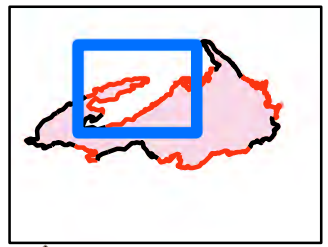
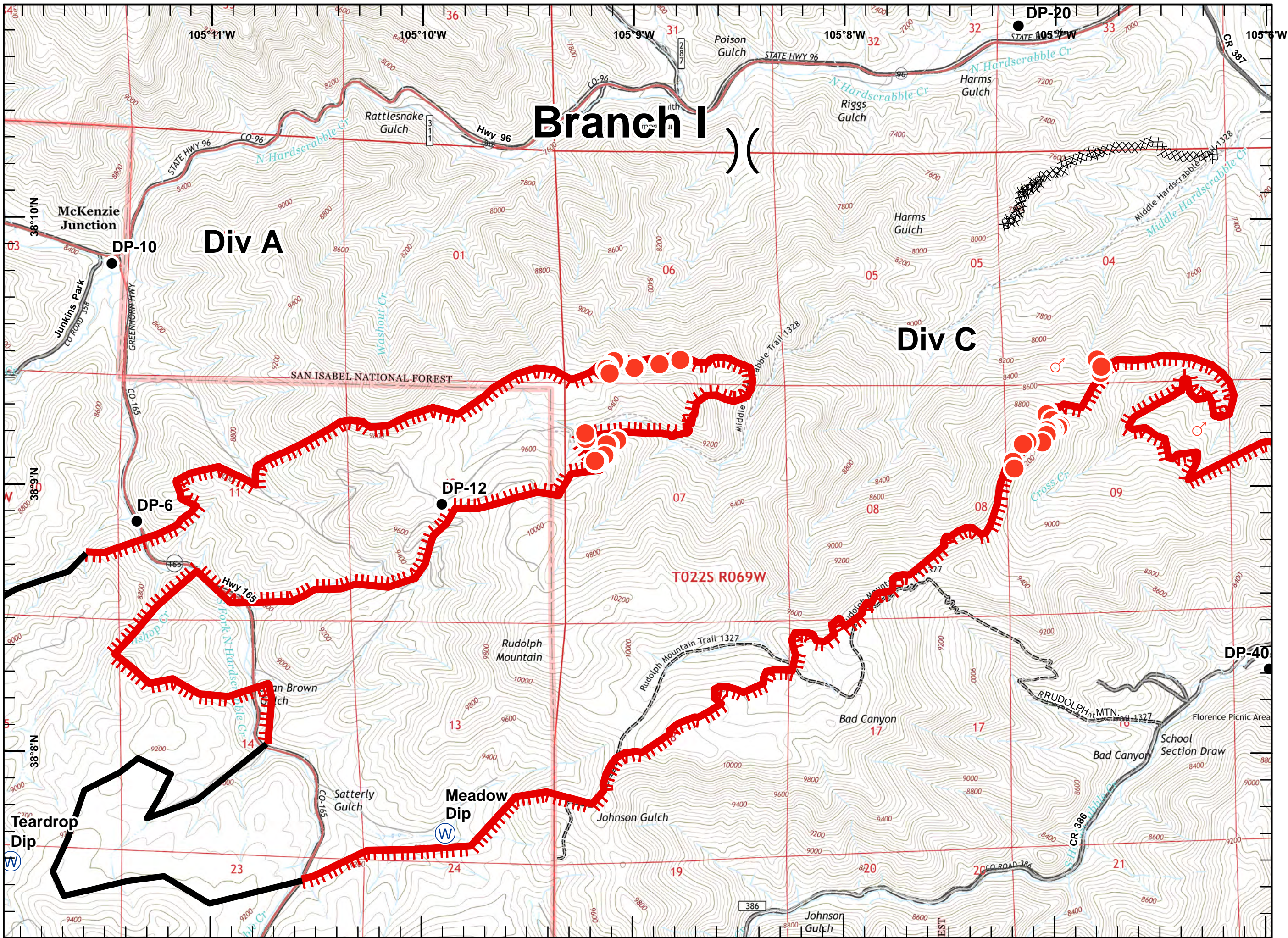
18,099 Acres
 10/22/2016 2100 hrs



Junkins Fire
CO-CUX-002046
10/23/16
Day
NAD 83

PAGE 2 Div C

- Hot Spot
- Drop Point
- Helispot
- R Repeater
- W X Mobile Weather Unit
- I ICP
- W Water Source
- ♂ Spot Fire
-)) Division
-]] Branch
- Completed Dozer Line
- Completed Line
- Hand Line
- Uncontrolled Fire Edge
- Trails
- Roads



Miles

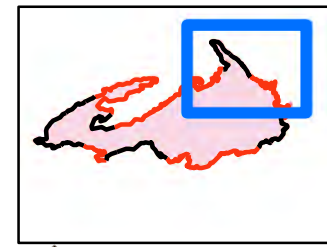
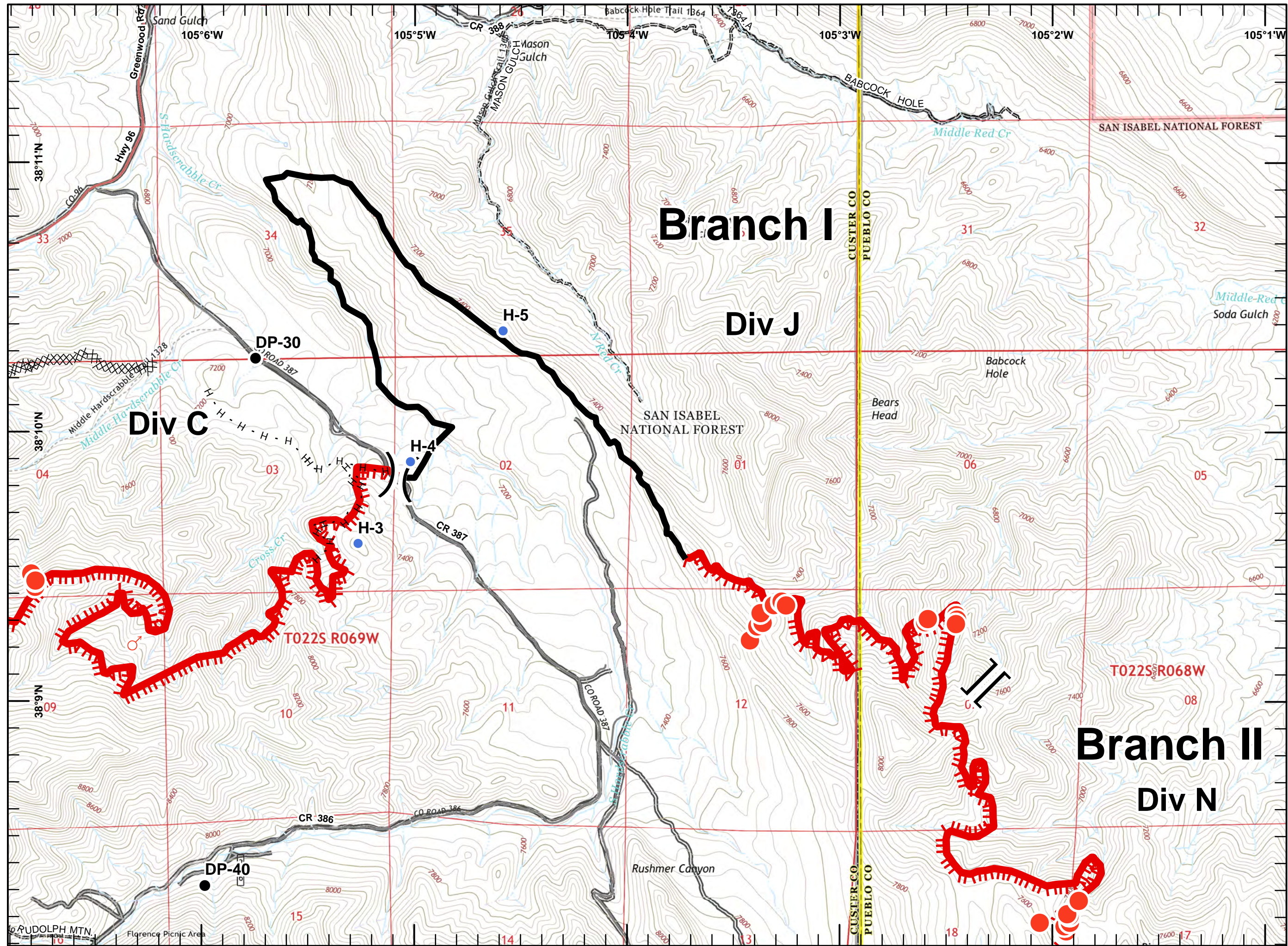
0 0.25 0.5

18,099 Acres
10/22/2016 2100 hrs

Junkins Fire
CO-CUX-002046
10/23/16
Day
NAD 83

PAGE 3 Div J

- Hot Spot
- Drop Point
- Helispot
- R Repeater
- W X Mobile Weather Unit
- ICP
- W Water Source
- ♂ Spot Fire
-) (Division
-] [Branch
- Completed Dozer Line
- Completed Line
- H · Hand Line
- Uncontrolled Fire Edge
- Trails
- Roads



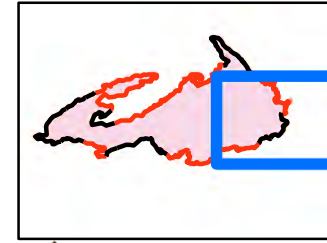
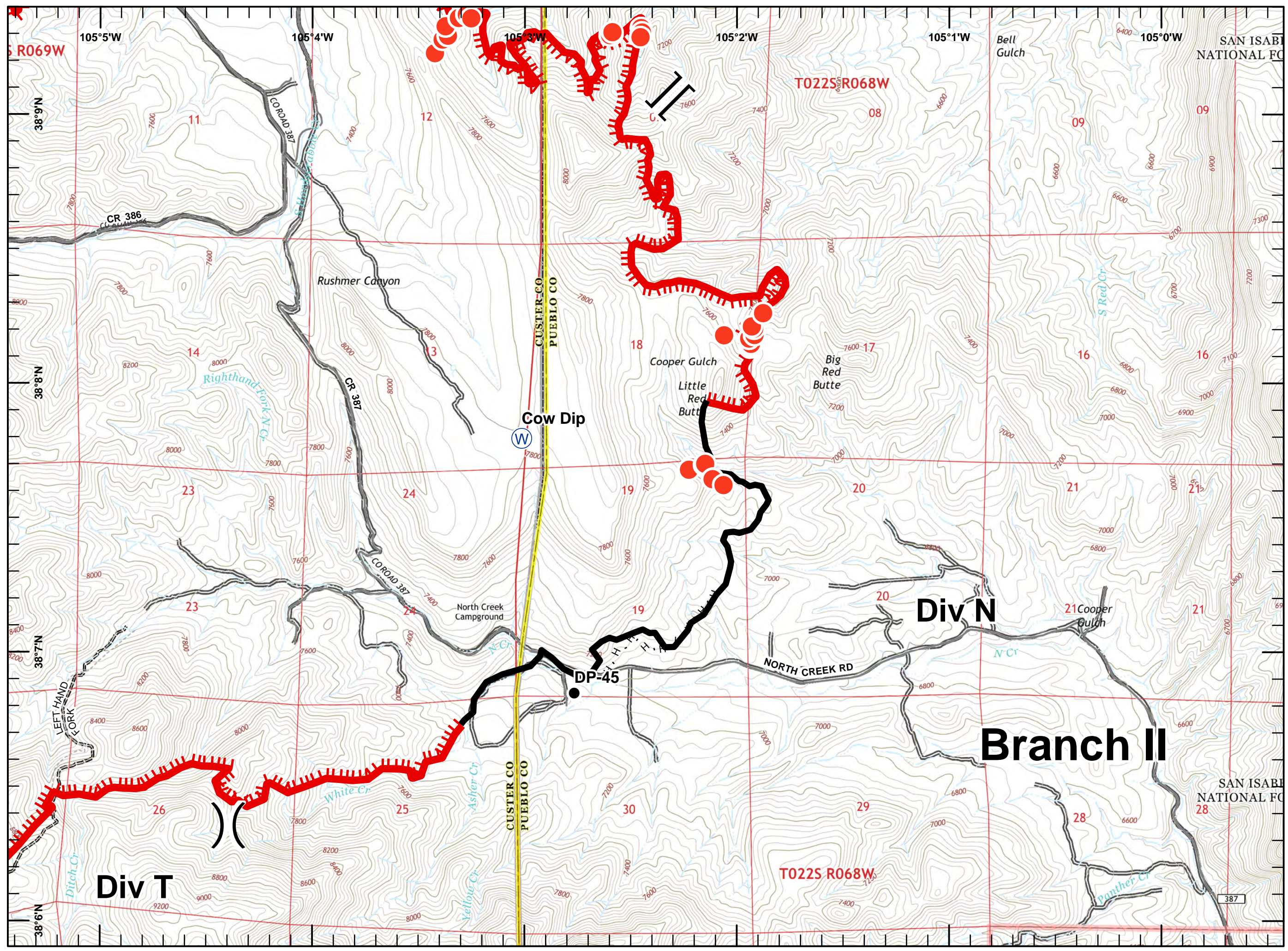
Miles
 0 0.25 0.5

18,099 Acres
 10/22/2016 2100 hrs

Junkins Fire
CO-CUX-002046
10/23/16
Day
NAD 83

PAGE 4 Div N

- Hot Spot
- Drop Point
- Helispot
- R Repeater
- W X Mobile Weather Unit
- I ICP
- W Water Source
- ⬆ Spot Fire
-) (Division
-] [Branch
- Completed Dozer Line
- Completed Line
- Hand Line
- Uncontrolled Fire Edge
- Trails
- Roads



Miles

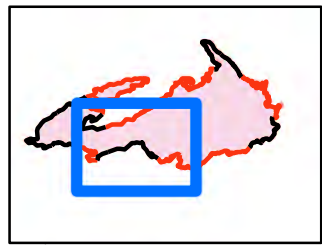
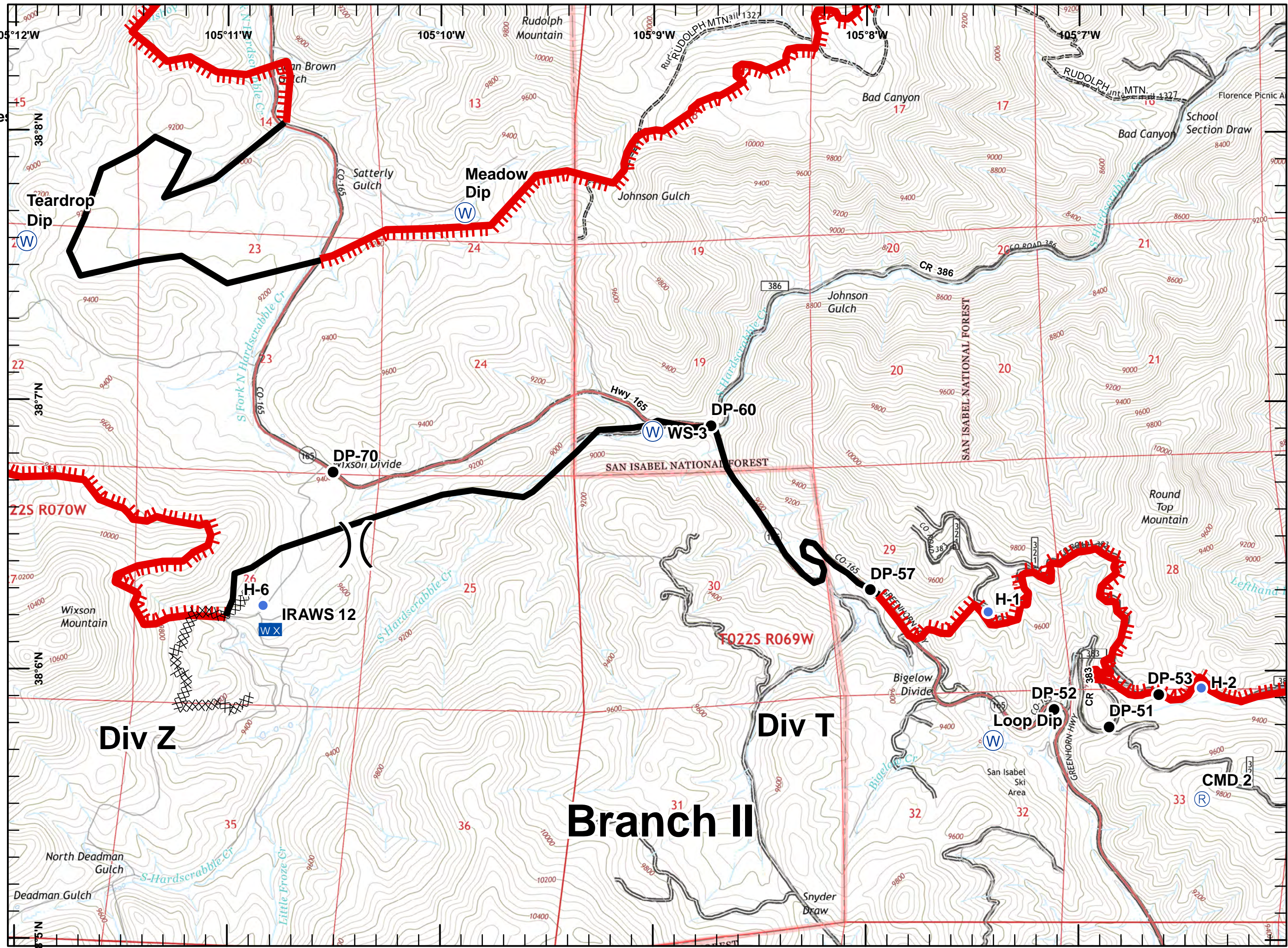
0 0.25 0.5

18,099 Acres
10/22/2016 2100 hrs

Junkins Fire
CO-CUX-002046
10/23/16
Day
NAD 83

PAGE 5 Div T (west)

- Hot Spot
- Drop Point
- Helispot
- R Repeater
- W X Mobile Weather Unit
- ▬ ICP
- W Water Source
- ⊕ Spot Fire
-) (Division
-] [Branch
- Completed Dozer Line
- Completed Line
- Hand Line
- Uncontrolled Fire Edge
- Trails
- Roads



Miles

0 0.25 0.5

18,099 Acres
 10/22/2016 2100 hrs

Branch II












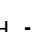




Div Z

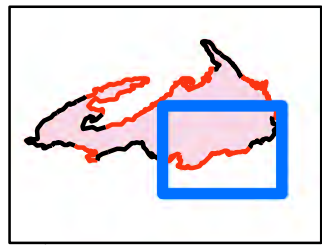
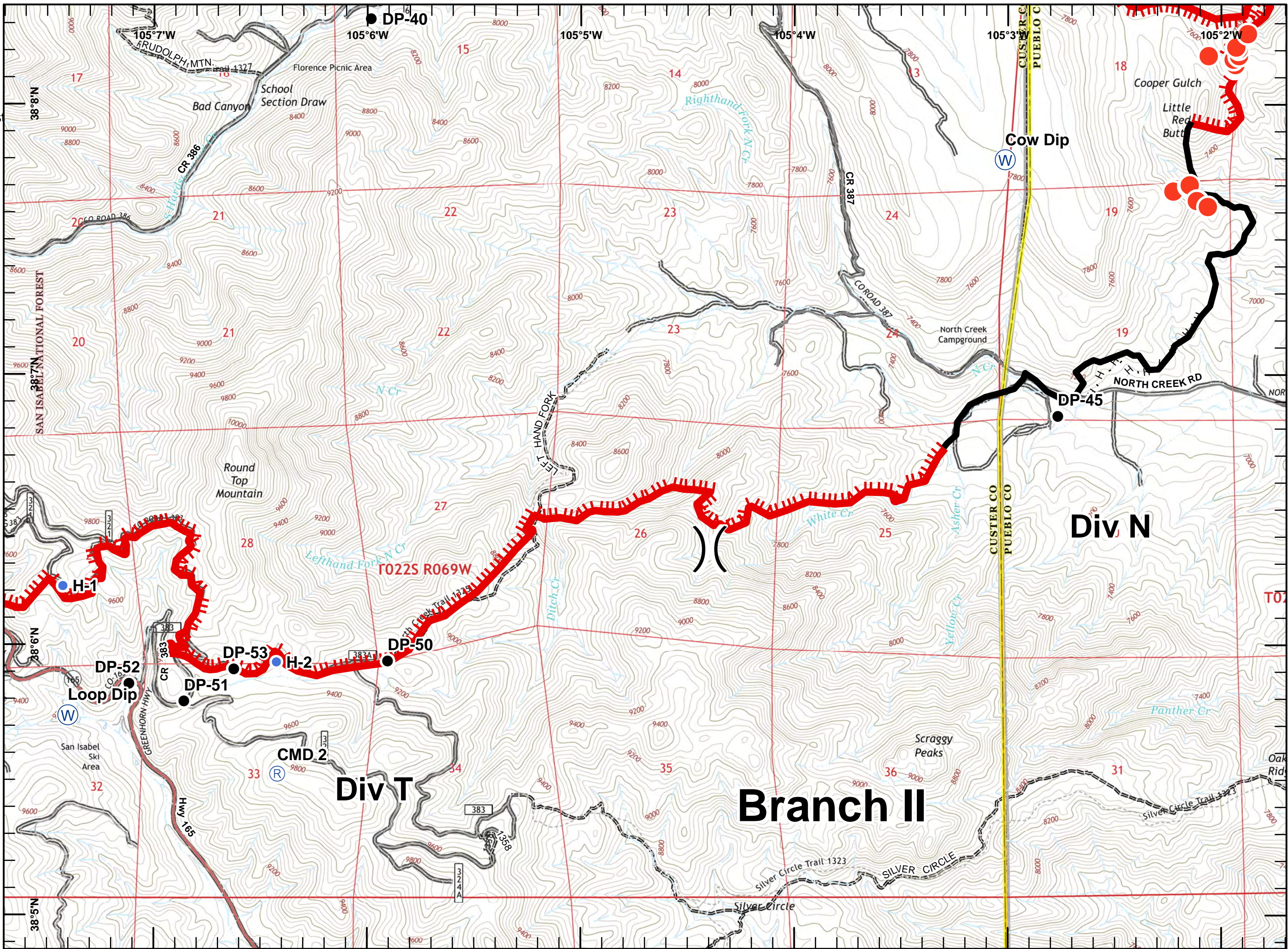
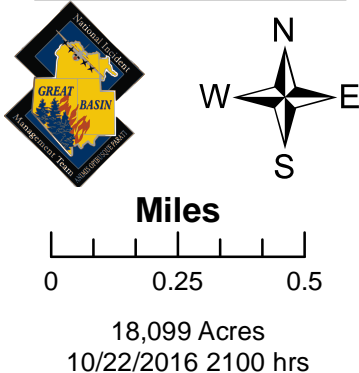
Div T

CMD 2

Junkins Fire
CO-CUX-002046
10/23/16
Day
NAD 83

PAGE 6 Div T(east)

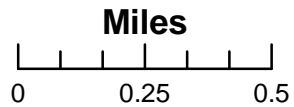
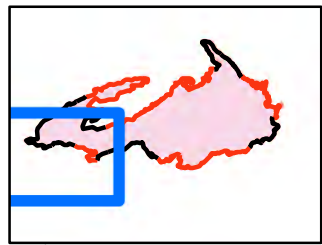
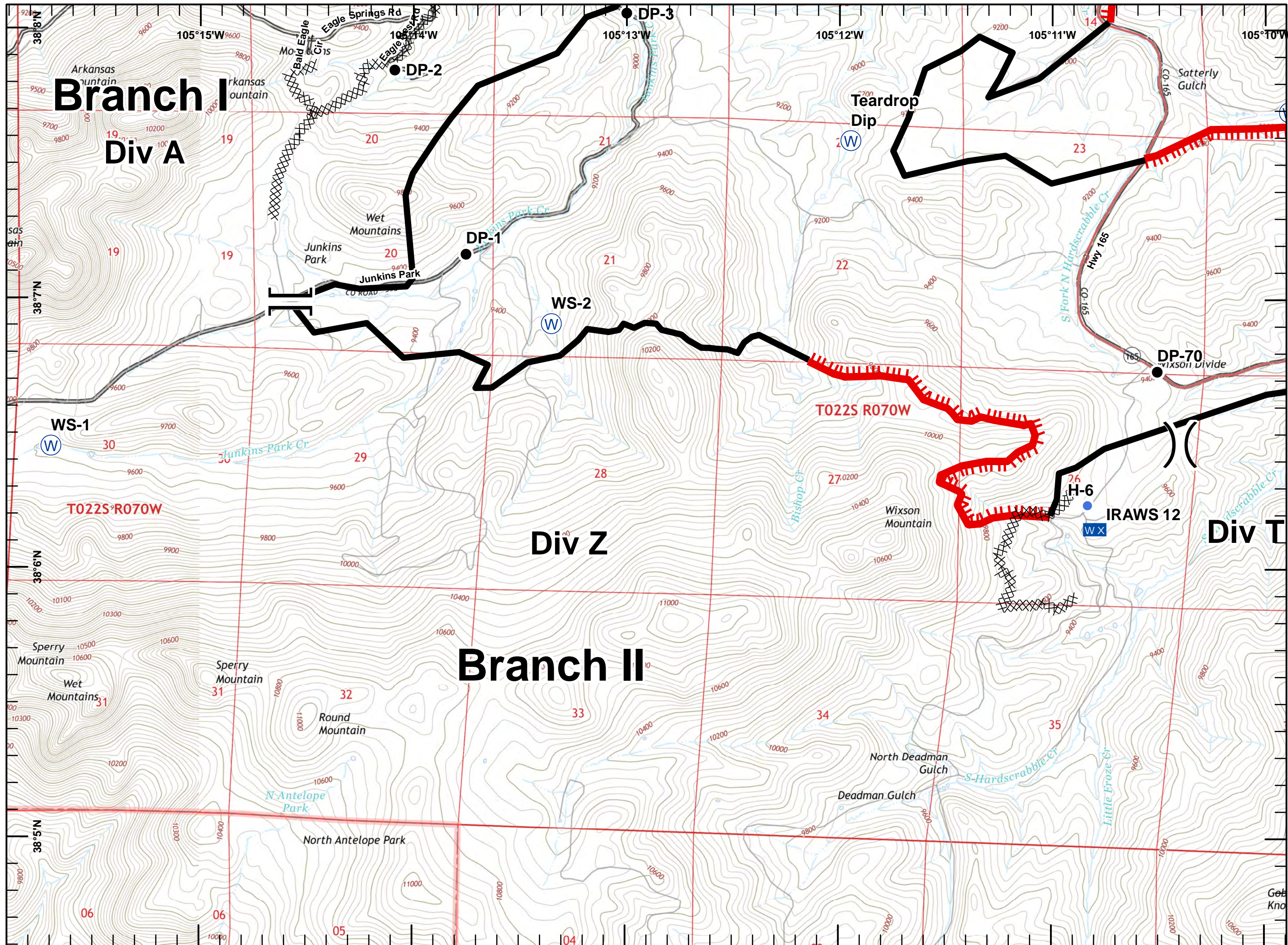
-  Hot Spot
-  Drop Point
-  Helispot
-  Repeater
-  Mobile Weather Unit
-  ICP
-  Water Source
-  Spot Fire
-  Division
-  Branch
-  Completed Dozer Line
-  Completed Line
-  Hand Line
-  Uncontrolled Fire Edge
-  Trails
-  Roads

Miles
 0 0.25 0.5

18,099 Acres
 10/22/2016 2100 hrs

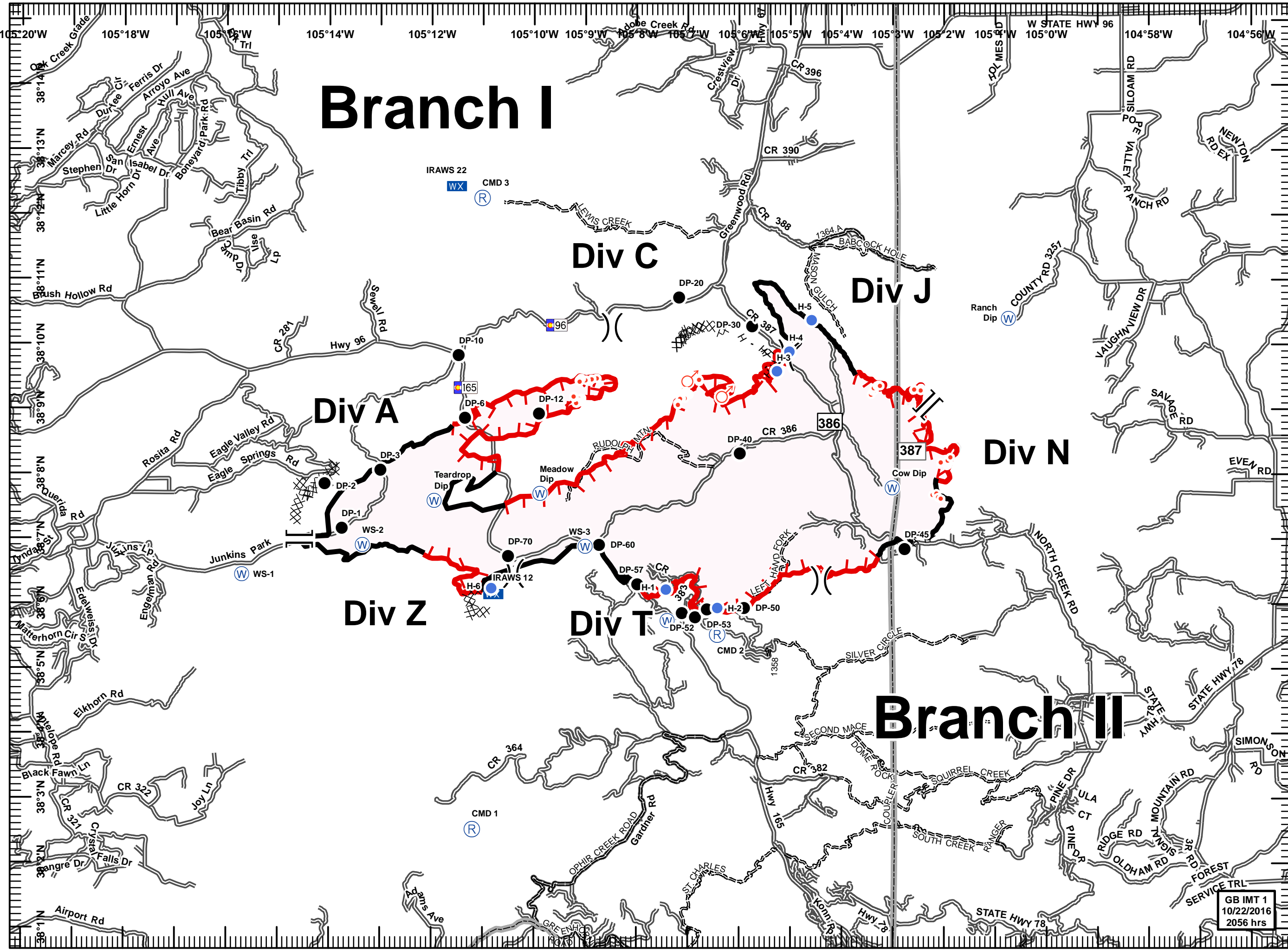
- Hot Spot
- Drop Point
- Helispot
- R Repeater
- WX Mobile Weather Unit
- ICP
- W Water Source
- ⬆ Spot Fire
-) (Division
-] [Branch
- Completed Dozer Line
- Completed Line
- Hand Line
- Uncontrolled Fire Edge
- Trails
- Roads



Junkins Fire
CO-CUX-002046
10/23/16
IAP
Day
NAD 83
Transportation

18,099 acres
 MMA Flight and
 Field Data
 10/22/2016 1730 hrs

- Division
- Branch
- Hot Spot
- Spot Fire
- Repeater
- Mobile Weather Unit
- Helispot
- Drop Point
- ICP
- Water Source
- Completed Dozer Line
- Completed Line
- Hand Line
- Uncontrolled Fire Edge
- Trails
- Roads



GB IMT 1
 10/22/2016
 2056 hrs