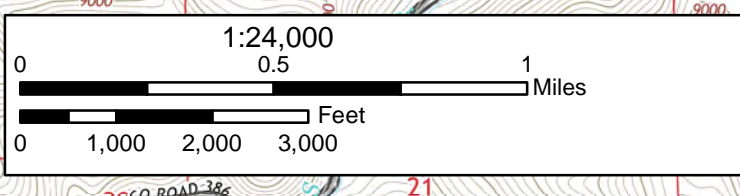
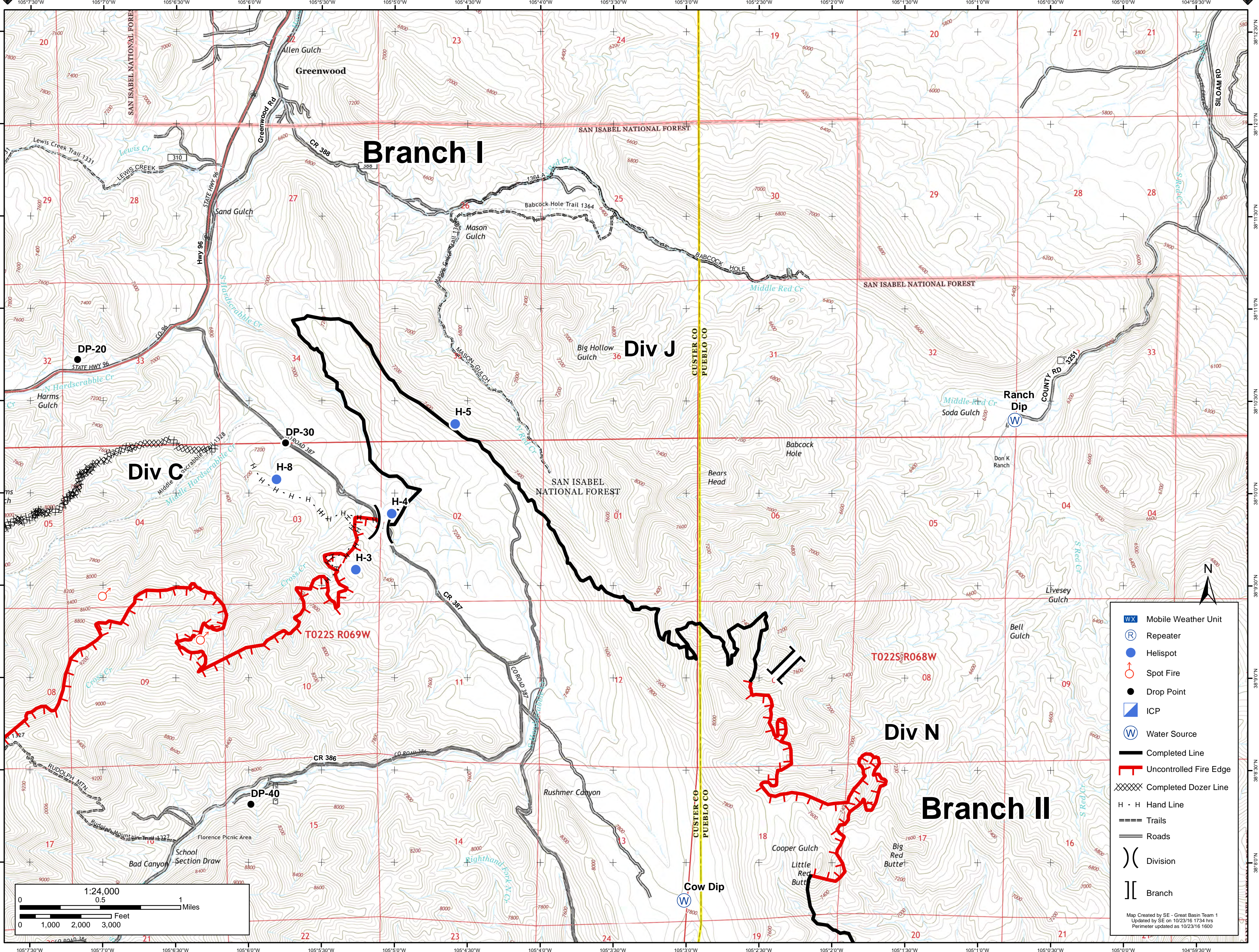




18,132 Acres

Junkins Fire Divison J

October 24th, 2016



	Mobile Weather Unit
	Repeater
	Helispot
	Spot Fire
	Drop Point
	ICP
	Water Source
	Completed Line
	Uncontrolled Fire Edge
	Completed Dozer Line
	Hand Line
	Trails
	Roads
	Division
	Branch

Map Created by SE - Great Basin Team 1
Updated by SE on 10/23/16 1734 hrs
Perimeter updated as 10/23/16 1600