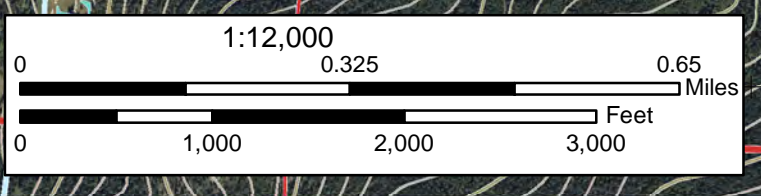
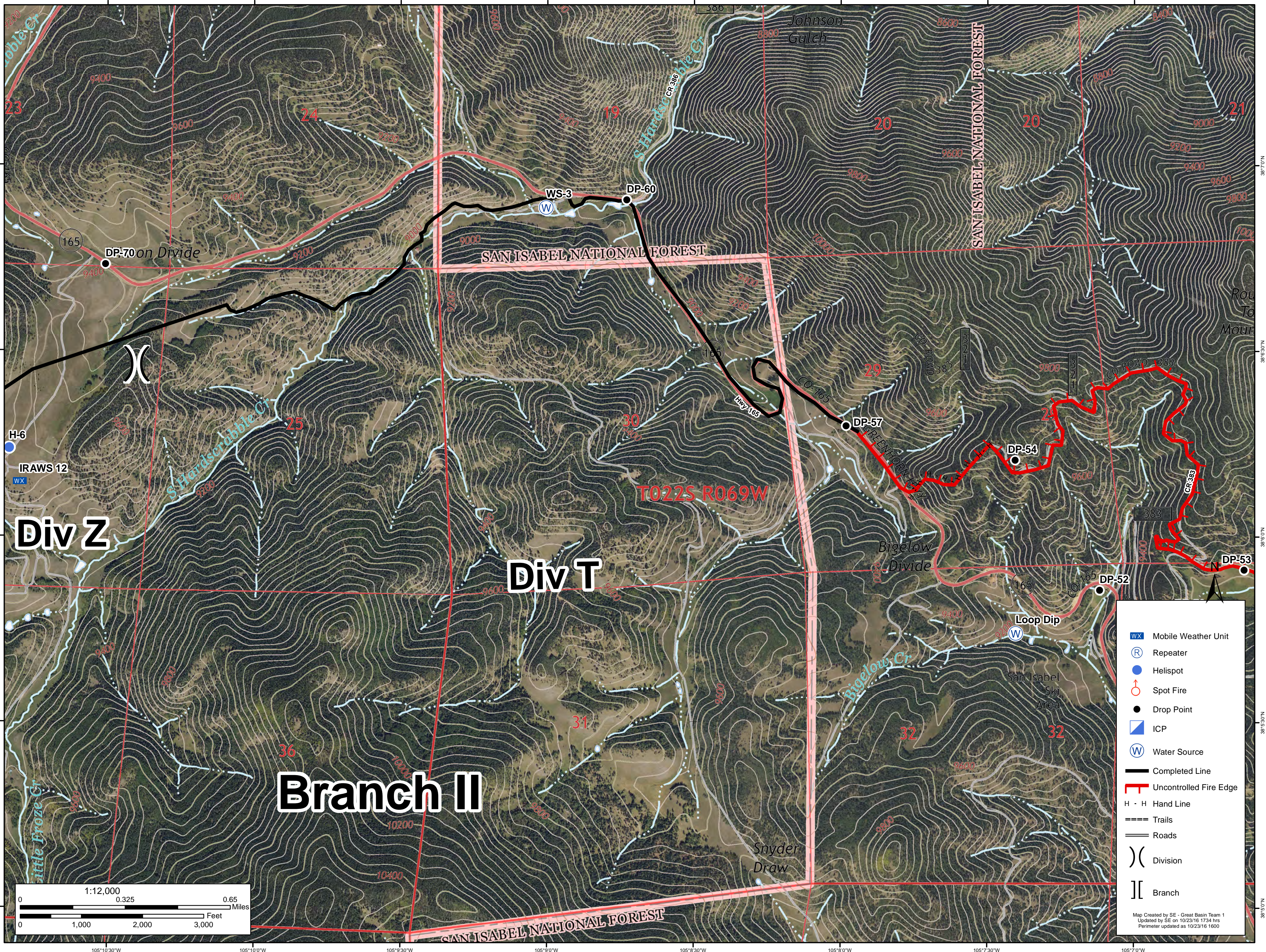




18,132 Acres

Junkins Fire Divison T (west)

October 24th, 2016



	Mobile Weather Unit
	Repeater
	Helispot
	Spot Fire
	Drop Point
	ICP
	Water Source
	Completed Line
	Uncontrolled Fire Edge
	Hand Line
	Trails
	Roads
	Division
	Branch

Map Created by SE - Great Basin Team 1
 Updated by SE on 10/23/16 1734 hrs
 Perimeter updated on 10/23/16 1600