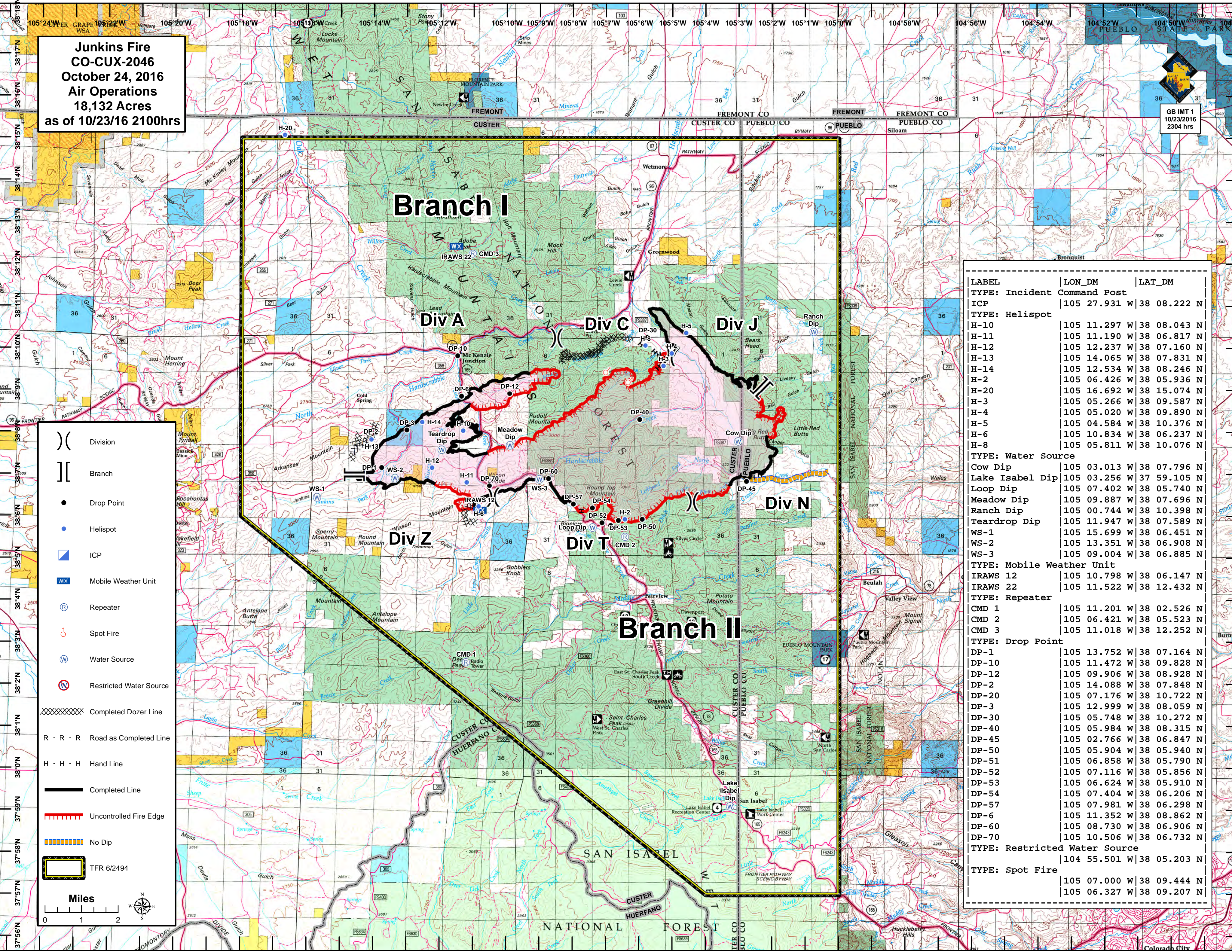


**Junkins Fire
CO-CUX-2046
October 24, 2016
Air Operations
18,132 Acres
as of 10/23/16 2100hrs**

GB IMT 1
10/23/2016
2304 hrs



Legend

- () Division
- [] Branch
- Drop Point
- Helispot
- ICP
- WX Mobile Weather Unit
- Ⓡ Repeater
- ⦿ Spot Fire
- Ⓜ Water Source
- Ⓜ Restricted Water Source
- XXXXX Completed Dozer Line
- R - R - R Road as Completed Line
- H - H - H Hand Line
- Completed Line
- Uncontrolled Fire Edge
- No Dip
- TFR 6/2494

Miles
0 1 2

LABEL	LON_DM	LAT_DM
TYPE: Incident Command Post		
ICP	105 27.931 W	38 08.222 N
TYPE: Helispot		
H-10	105 11.297 W	38 08.043 N
H-11	105 11.190 W	38 06.817 N
H-12	105 12.237 W	38 07.160 N
H-13	105 14.065 W	38 07.831 N
H-14	105 12.534 W	38 08.246 N
H-2	105 06.426 W	38 05.936 N
H-20	105 16.692 W	38 15.074 N
H-3	105 05.266 W	38 09.587 N
H-4	105 05.020 W	38 09.890 N
H-5	105 04.584 W	38 10.376 N
H-6	105 10.834 W	38 06.237 N
H-8	105 05.811 W	38 10.076 N
TYPE: Water Source		
Cow Dip	105 03.013 W	38 07.796 N
Lake Isabel Dip	105 03.256 W	37 59.105 N
Loop Dip	105 07.402 W	38 05.740 N
Meadow Dip	105 09.887 W	38 07.696 N
Ranch Dip	105 00.744 W	38 10.398 N
Teardrop Dip	105 11.947 W	38 07.589 N
WS-1	105 15.699 W	38 06.451 N
WS-2	105 13.351 W	38 06.908 N
WS-3	105 09.004 W	38 06.885 N
TYPE: Mobile Weather Unit		
IRAWS 12	105 10.798 W	38 06.147 N
IRAWS 22	105 11.522 W	38 12.432 N
TYPE: Repeater		
CMD 1	105 11.201 W	38 02.526 N
CMD 2	105 06.421 W	38 05.523 N
CMD 3	105 11.018 W	38 12.252 N
TYPE: Drop Point		
DP-1	105 13.752 W	38 07.164 N
DP-10	105 11.472 W	38 09.828 N
DP-12	105 09.906 W	38 08.928 N
DP-2	105 14.088 W	38 07.848 N
DP-20	105 07.176 W	38 10.722 N
DP-3	105 12.999 W	38 08.059 N
DP-30	105 05.748 W	38 10.272 N
DP-40	105 05.984 W	38 08.315 N
DP-45	105 02.766 W	38 06.847 N
DP-50	105 05.904 W	38 05.940 N
DP-51	105 06.858 W	38 05.790 N
DP-52	105 07.116 W	38 05.856 N
DP-53	105 06.624 W	38 05.910 N
DP-54	105 07.404 W	38 06.206 N
DP-57	105 07.981 W	38 06.298 N
DP-6	105 11.352 W	38 08.862 N
DP-60	105 08.730 W	38 06.906 N
DP-70	105 10.506 W	38 06.732 N
TYPE: Restricted Water Source		
	104 55.501 W	38 05.203 N
TYPE: Spot Fire		
	105 07.000 W	38 09.444 N
	105 06.327 W	38 09.207 N