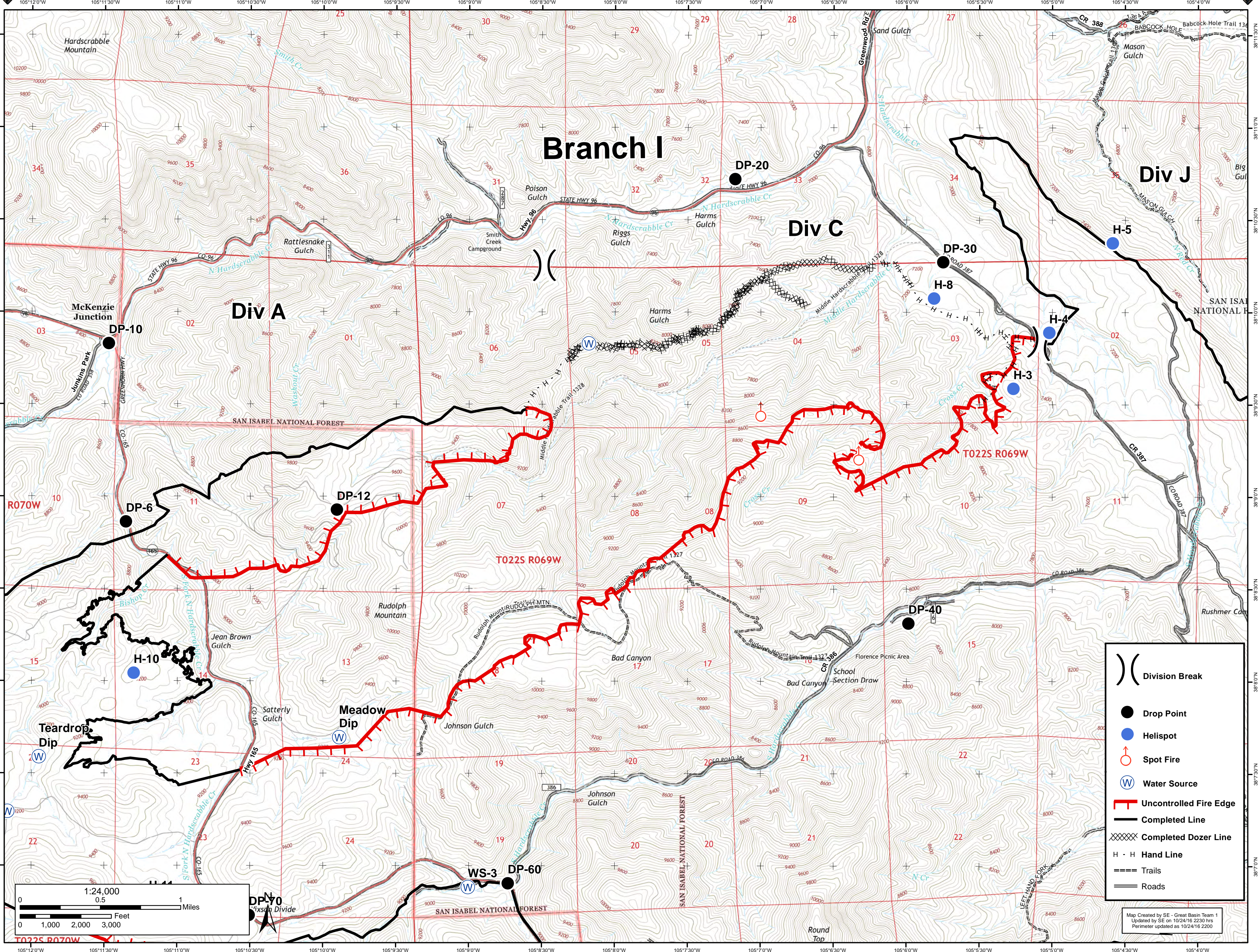




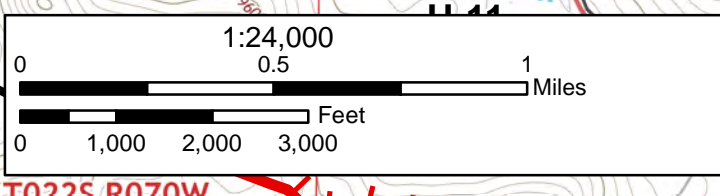
18,132 Acres

Junkins Fire Divison C

October 25th, 2016



- Division Break
- Drop Point
- Helispot
- Spot Fire
- Water Source
- Uncontrolled Fire Edge
- Completed Line
- Completed Dozer Line
- Hand Line
- Trails
- Roads



Map Created by SE - Great Basin Team 1
 Updated by SE on 10/24/16 2230 hrs
 Perimeter updated on 10/24/16 2200