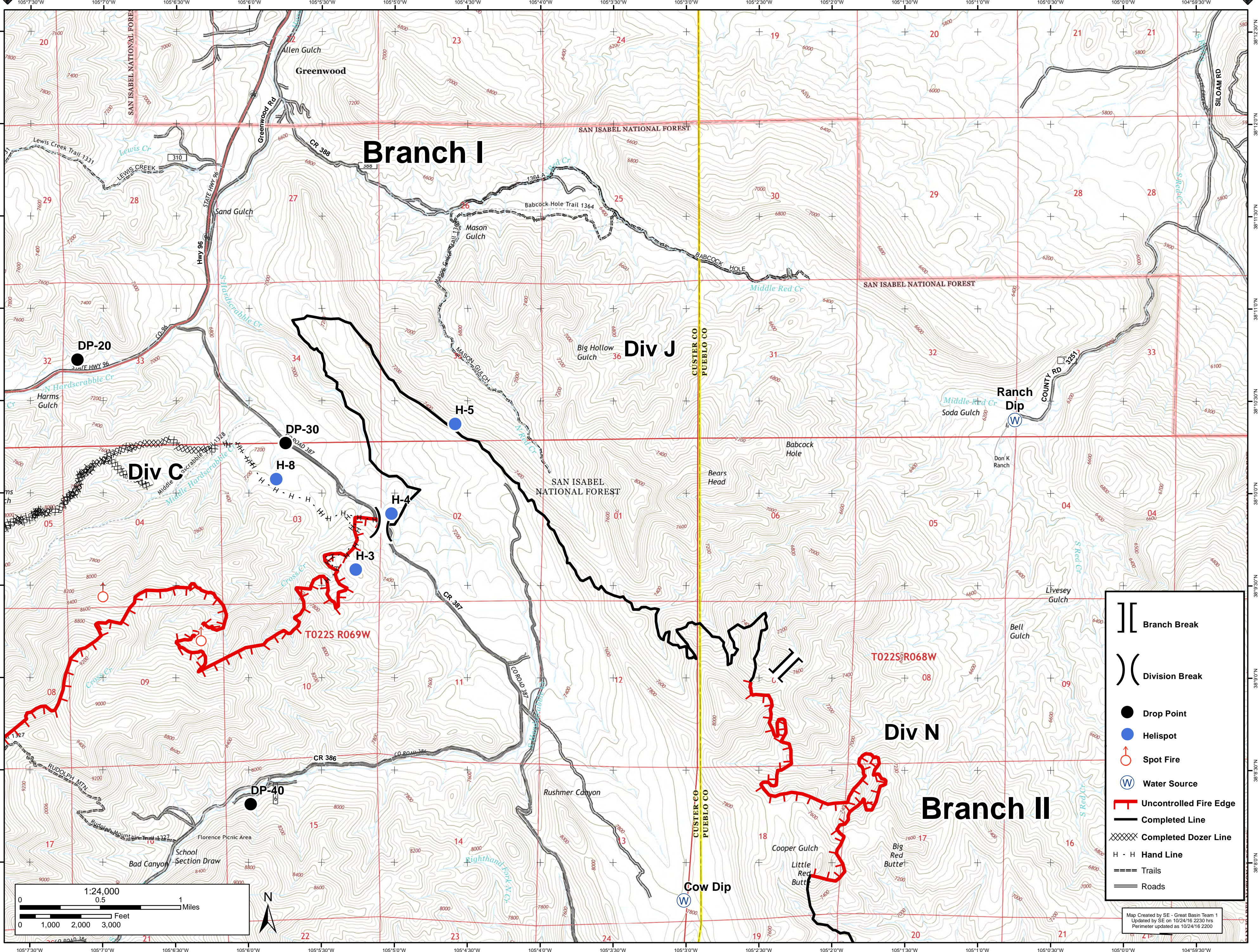




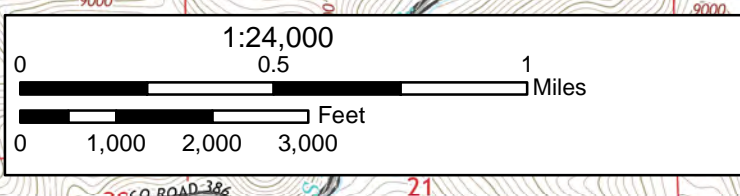
18,132 Acres

# Junkins Fire Divison J

October 25th, 2016



	Branch Break
	Division Break
	Drop Point
	Helispot
	Spot Fire
	Water Source
	Uncontrolled Fire Edge
	Completed Line
	Completed Dozer Line
	Hand Line
	Trails
	Roads



Map Created by SE - Great Basin Team 1  
 Updated by SE on 10/24/16 2230 hrs  
 Perimeter updated as 10/24/16 2200