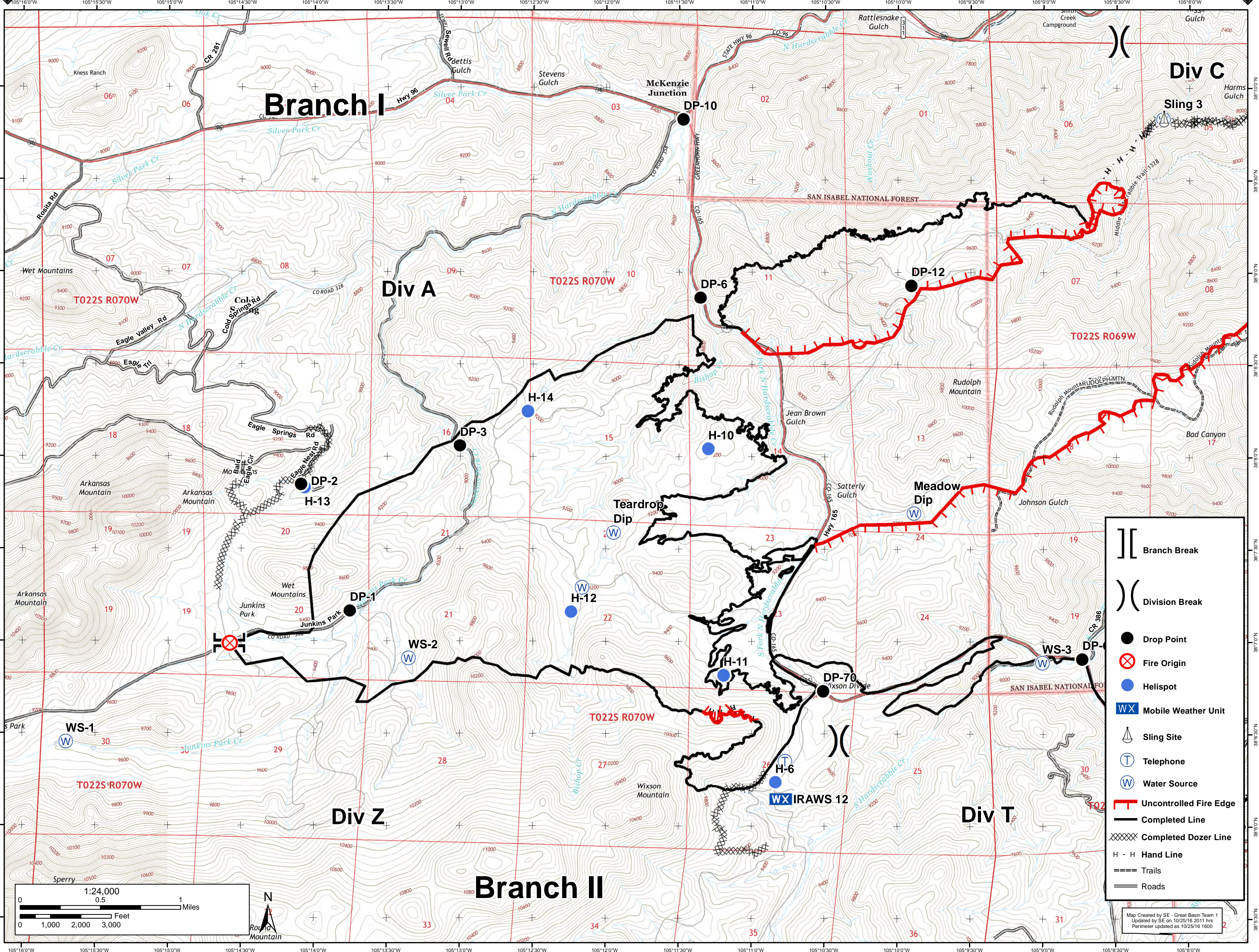




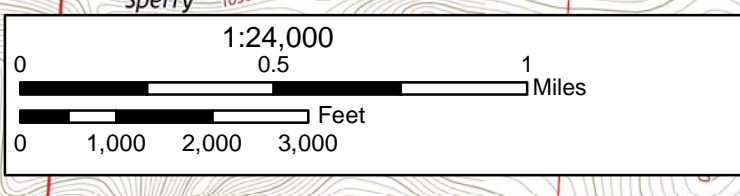
17,675 Acres

Junkins Fire Divison A

October 26th, 2016



	Branch Break
	Division Break
	Drop Point
	Fire Origin
	Helispot
	Mobile Weather Unit
	Sling Site
	Telephone
	Water Source
	Uncontrolled Fire Edge
	Completed Line
	Completed Dozer Line
	Hand Line
	Trails
	Roads



Map Created by SE - Great Basin Team 1
 Updated by SE on 10/25/16 2011 hrs
 Perimeter updated as 10/25/16 1600