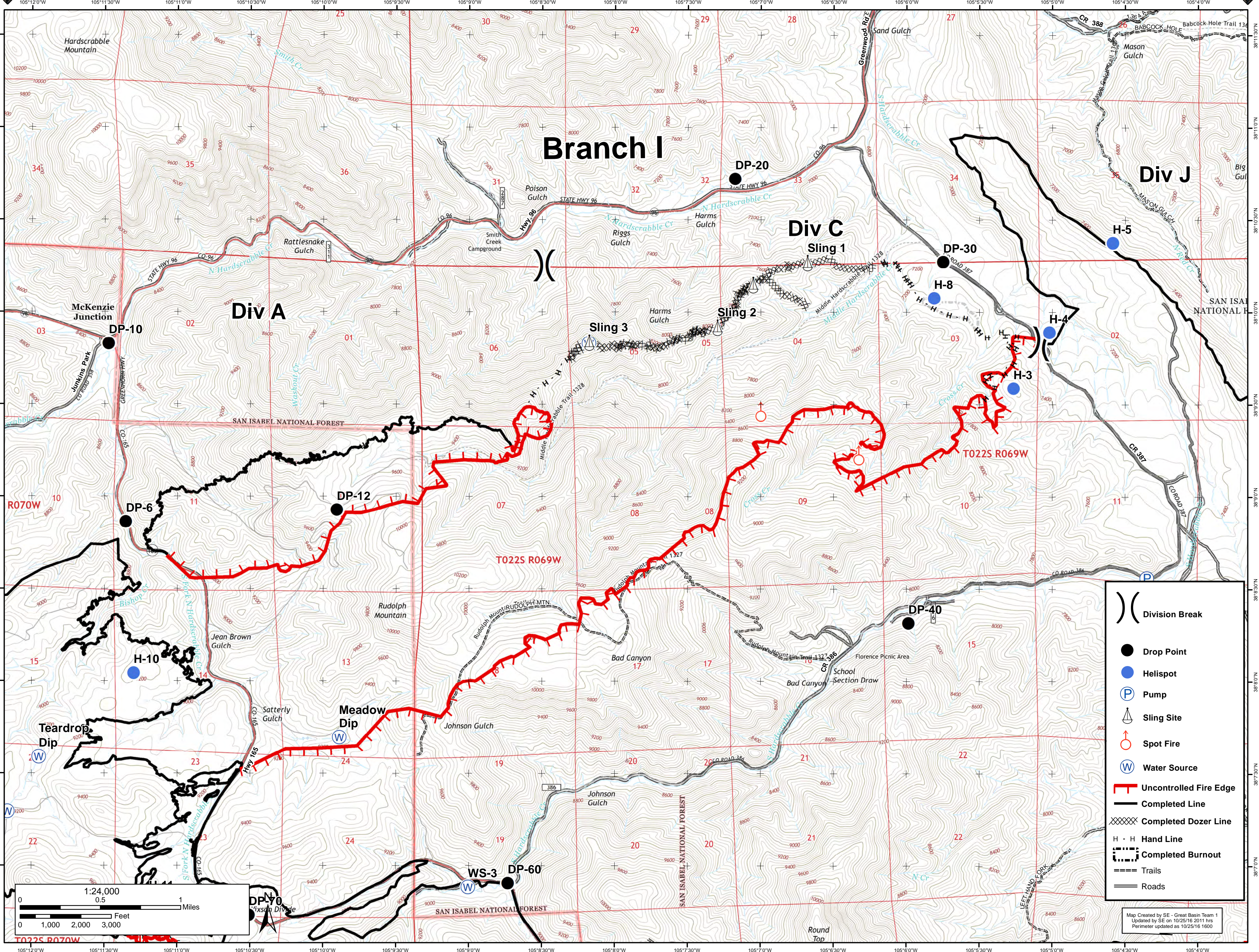




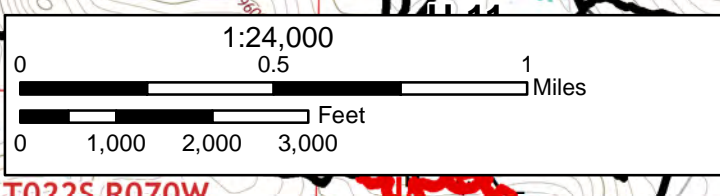
17,675 Acres

Junkins Fire Divison C

October 26th, 2016



- Division Break
- Drop Point
- Helispot
- Pump
- Sling Site
- Spot Fire
- Water Source
- Uncontrolled Fire Edge
- Completed Line
- Completed Dozer Line
- Hand Line
- Completed Burnout
- Trails
- Roads



Map Created by SE - Great Basin Team 1
 Updated by SE on 10/25/16 2011 hrs
 Perimeter updated on 10/25/16 1600