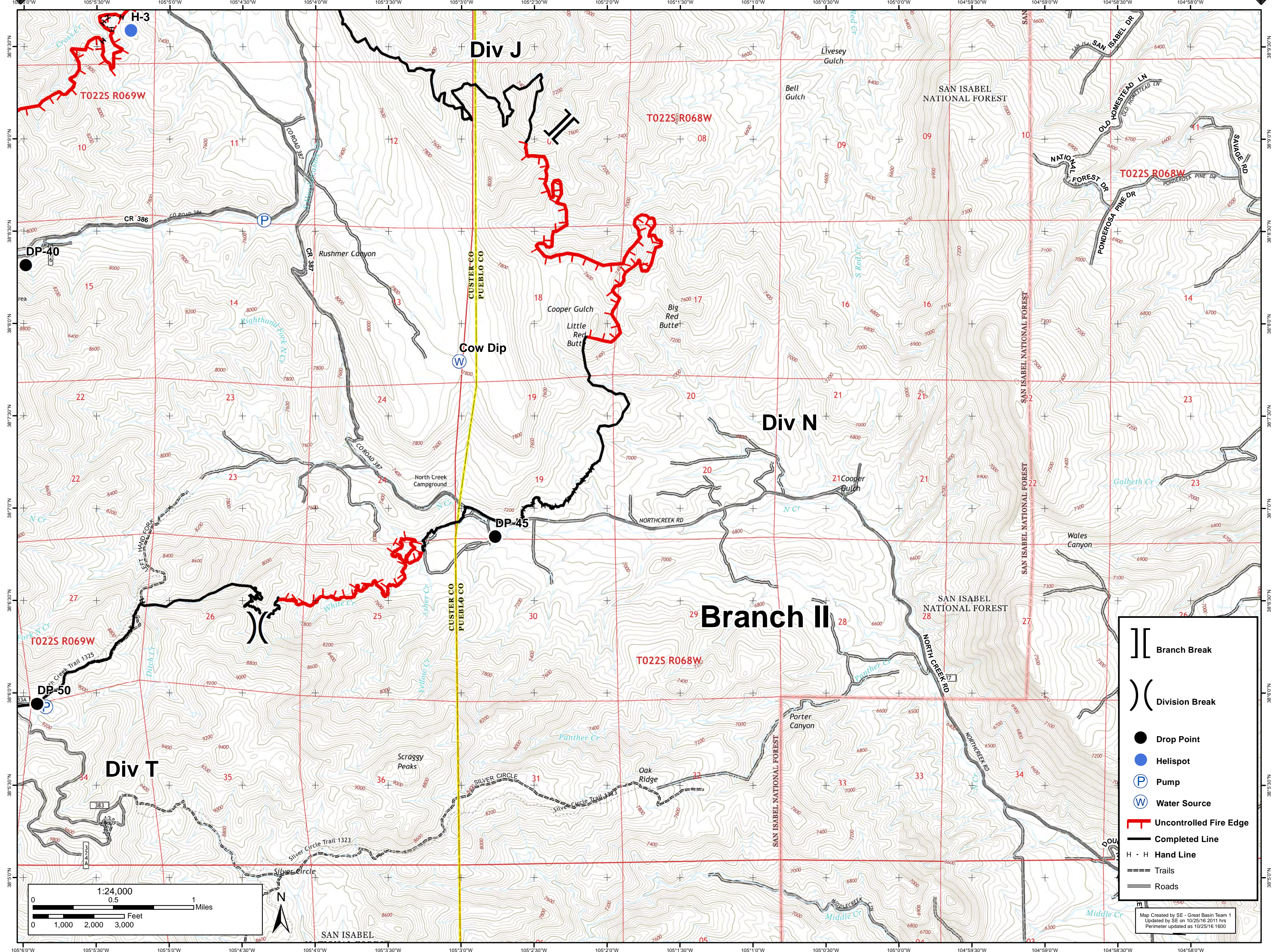




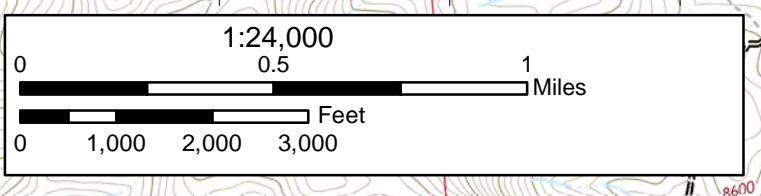
17,675 Acres

# Junkins Fire Divison N

October 26th, 2016



	Branch Break
	Division Break
	Drop Point
	Helispot
	Pump
	Water Source
	Uncontrolled Fire Edge
	Completed Line
	Hand Line
	Trails
	Roads



Map Created by SE - Great Basin Team 1  
 Updated by SE on 10/25/16 2011 hrs  
 Perimeter updated as 10/25/16 1600