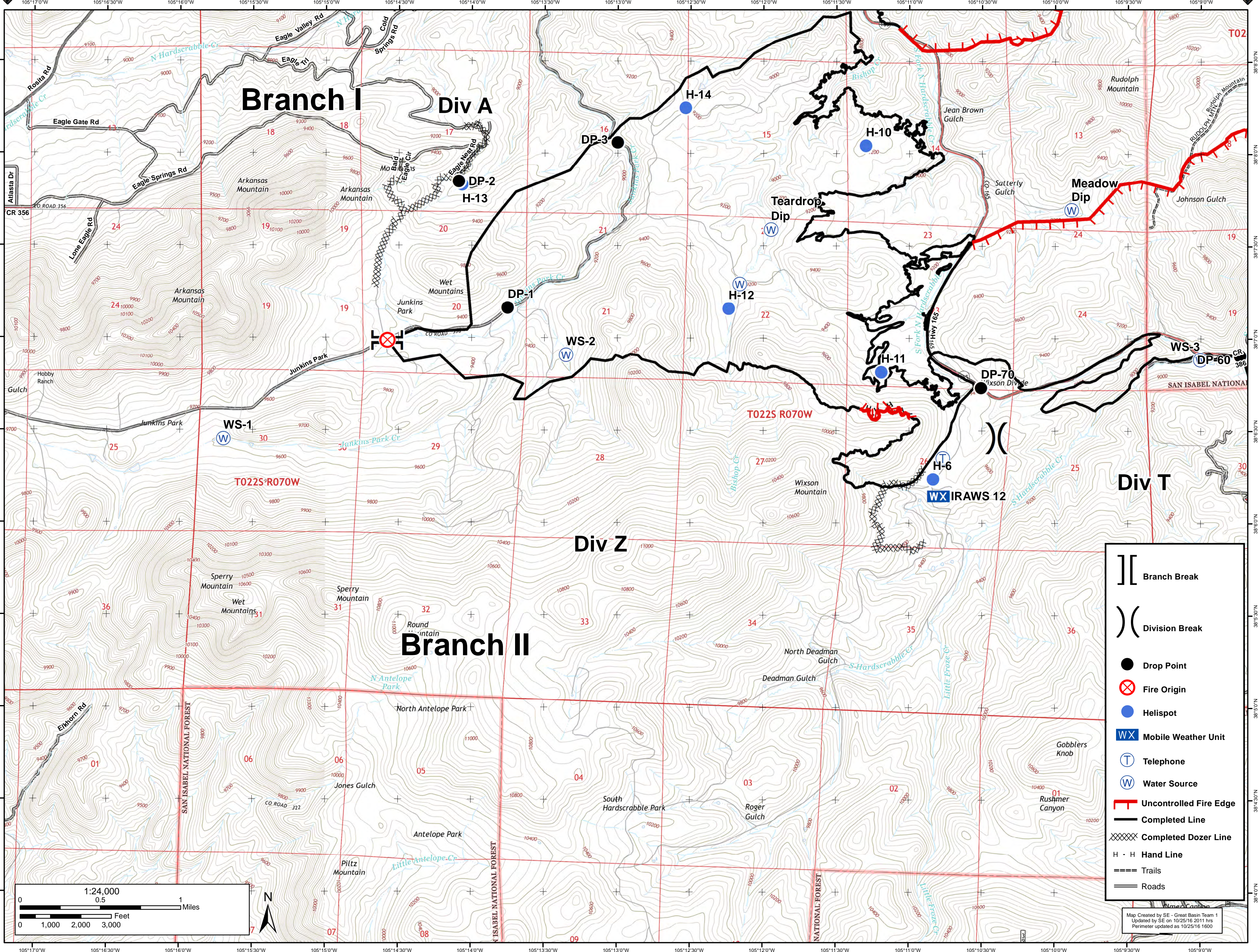




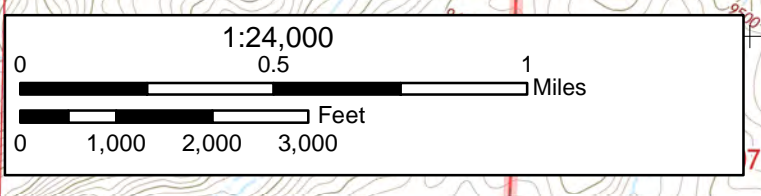
17,675 Acres

# Junkins Fire Divison Z

October 26th, 2016



- Branch Break
- Division Break
- Drop Point
- Fire Origin
- Helispot
- Mobile Weather Unit
- Telephone
- Water Source
- Uncontrolled Fire Edge
- Completed Line
- Completed Dozer Line
- Hand Line
- Trails
- Roads



Map Created by SE - Great Basin Team 1  
 Updated by SE on 10/25/16 2011 hrs  
 Perimeter updated on 10/25/16 1600