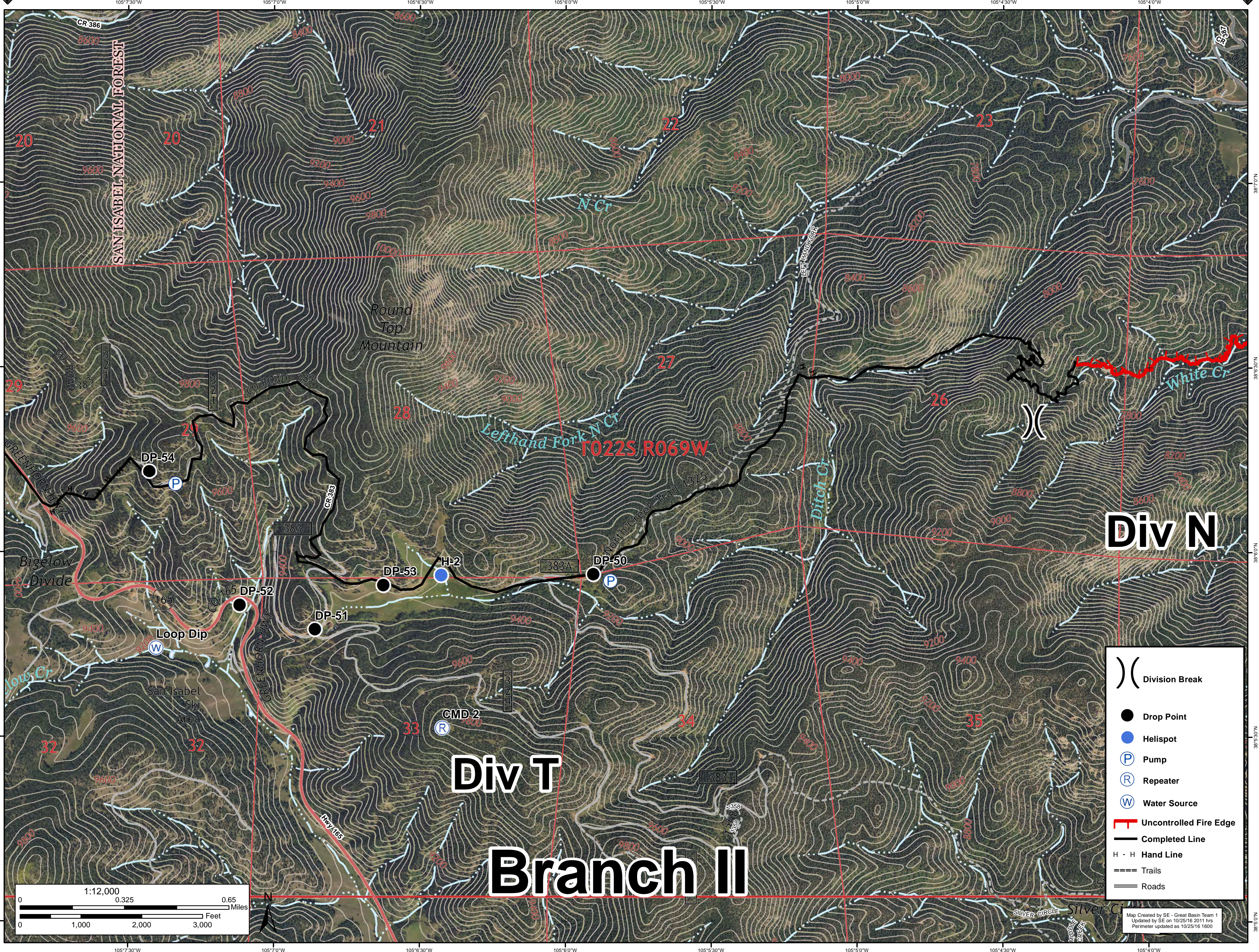




17,675 Acres

Junkins Fire Divison T (east)

October 26th, 2016

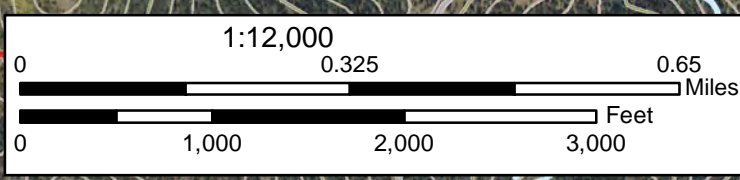


Div N

Div T

Branch II

- Division Break
- Drop Point
- Helispot
- Pump
- Repeater
- Water Source
- Uncontrolled Fire Edge
- Completed Line
- Hand Line
- Trails
- Roads



Map Created by SE - Great Basin Team 1
 Updated by SE on 10/25/16 2011 hrs
 Perimeter updated on 10/25/16 1600