

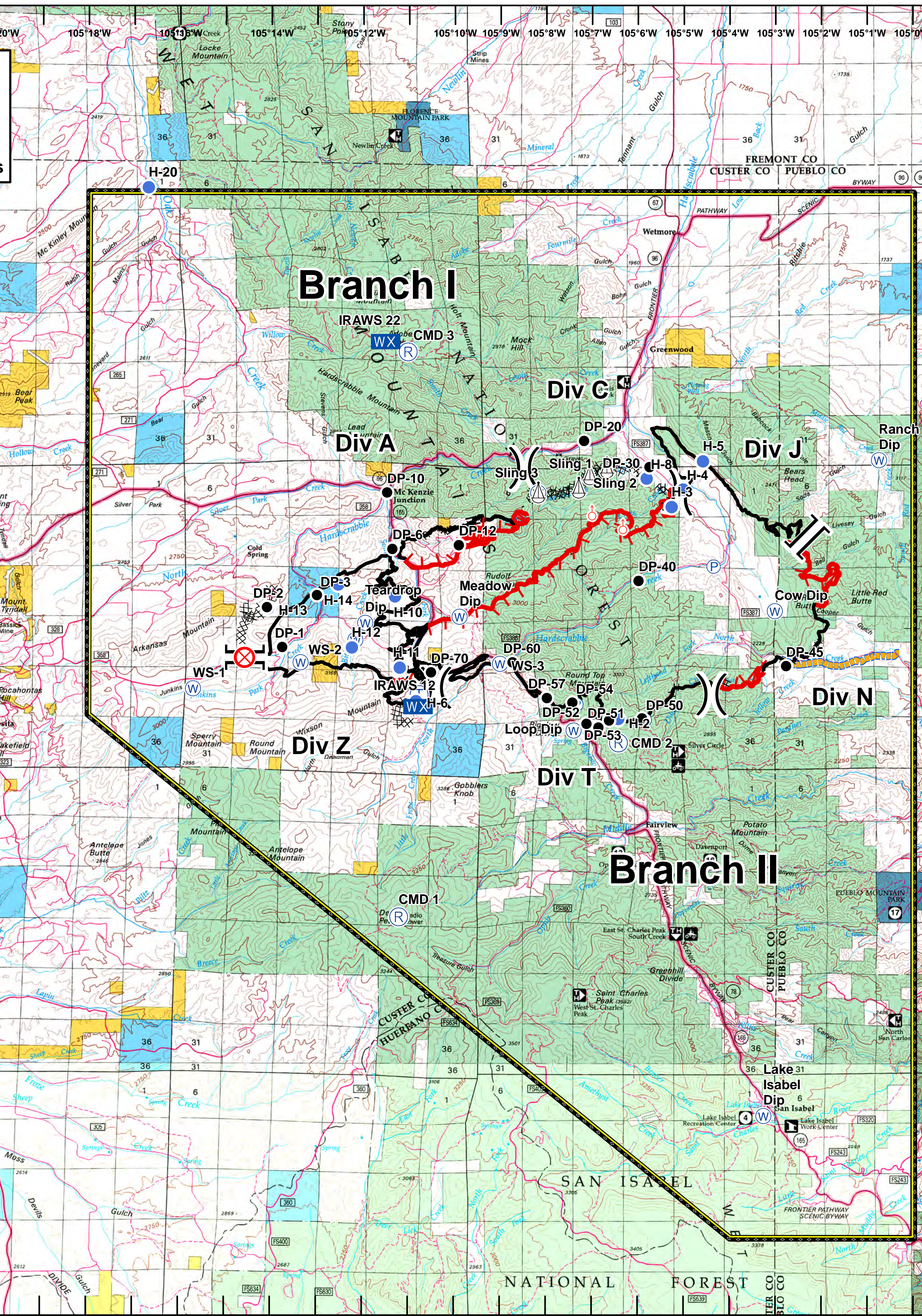
**Junkins Fire
CO-CUX-2046
October 26, 2016
Air Operations
17,675 Acres
as of 10/25/16 2000hrs**

**GB IMT 1
10/25/2016
2125 hrs**

Legend

- Branch Break
- Division Break
- Drop Point
- Fire Origin
- Helispot
- Mobile Weather Unit
- Pump
- Repeater
- Sling Site
- Spot Fire
- Telephone
- Water Source
- Uncontrolled Fire Edge
- Completed Line
- Completed Dozer Line
- Hand Line
- No Dip
- TFR 6/2494

Miles



Type	Label	LatWGS84	LongWGS84
Water Source	WS-1	38° 6.452'	-105° 15.700'
Water Source	WS-3	38° 6.885'	-105° 9.005'
Water Source	WS-2	38° 6.908'	-105° 13.352'
Water Source	Teardrop Dip	38° 7.589'	-105° 11.948'
Water Source	Meadow Dip	38° 7.696'	-105° 9.888'
Water Source	Lake Isabel Dip	37° 59.106'	-105° 3.257'
Water Source	Cow Dip	38° 7.796'	-105° 3.014'
Water Source	Loop Dip	38° 5.740'	-105° 7.403'
Water Source	Ranch Dip	38° 10.399'	-105° 0.745'
Water Source		38° 9.831'	-105° 8.180'
Water Source		38° 5.922'	-105° 5.846'
Water Source		38° 6.184'	-105° 7.337'
Drop Point	DP-70	38° 6.732'	-105° 10.507'
Drop Point	DP-60	38° 6.906'	-105° 8.731'
Drop Point	DP-1	38° 7.164'	-105° 13.753'
Drop Point	DP-2	38° 7.848'	-105° 14.089'
Drop Point	DP-3	38° 8.059'	-105° 13.000'
Drop Point	DP-6	38° 8.862'	-105° 11.353'
Drop Point	DP-57	38° 6.298'	-105° 7.982'
Drop Point	DP-12	38° 8.928'	-105° 9.907'
Drop Point	DP-10	38° 9.828'	-105° 11.473'
Drop Point	DP-20	38° 10.722'	-105° 7.177'
Drop Point	DP-51	38° 5.790'	-105° 6.859'
Drop Point	DP-52	38° 5.856'	-105° 7.117'
Drop Point	DP-50	38° 5.940'	-105° 5.905'
Drop Point	DP-53	38° 5.910'	-105° 6.625'
Drop Point	DP-54	38° 6.206'	-105° 7.405'
Drop Point	DP-45	38° 6.847'	-105° 2.767'
Drop Point	DP-40	38° 8.316'	-105° 5.985'
Drop Point	DP-30	38° 10.272'	-105° 5.749'
Helispot	H-6	38° 6.238'	-105° 10.834'
Helispot	H-11	38° 6.817'	-105° 11.191'
Helispot	H-12	38° 7.160'	-105° 12.238'
Helispot	H-13	38° 7.831'	-105° 14.066'
Helispot	H-10	38° 8.043'	-105° 11.298'
Helispot	H-14	38° 8.246'	-105° 12.535'
Helispot	H-2	38° 5.937'	-105° 6.426'
Helispot	H-3	38° 9.587'	-105° 5.266'
Helispot	H-4	38° 9.891'	-105° 5.021'
Helispot	H-8	38° 10.076'	-105° 5.812'
Helispot	H-5	38° 10.376'	-105° 4.585'
Helispot	H-20	38° 15.074'	-105° 16.693'
Mobile Weather Unit	IRAWS 12	38° 6.147'	-105° 10.799'
Mobile Weather Unit	IRAWS 22	38° 12.432'	-105° 11.522'
Repeater	CMD 3	38° 12.252'	-105° 11.019'
Repeater	CMD 1	38° 2.526'	-105° 11.202'
Repeater	CMD 2	38° 5.523'	-105° 6.422'
Spot Fire	CMD 2	38° 9.444'	-105° 7.001'
Spot Fire	CMD 2	38° 9.207'	-105° 6.328'
Sling Site	Sling-1	38° 10.267'	-105° 6.681'
Sling Site	Sling-2	38° 9.913'	-105° 7.299'
Sling Site	Sling-3	38° 9.83'	-105° 8.18'