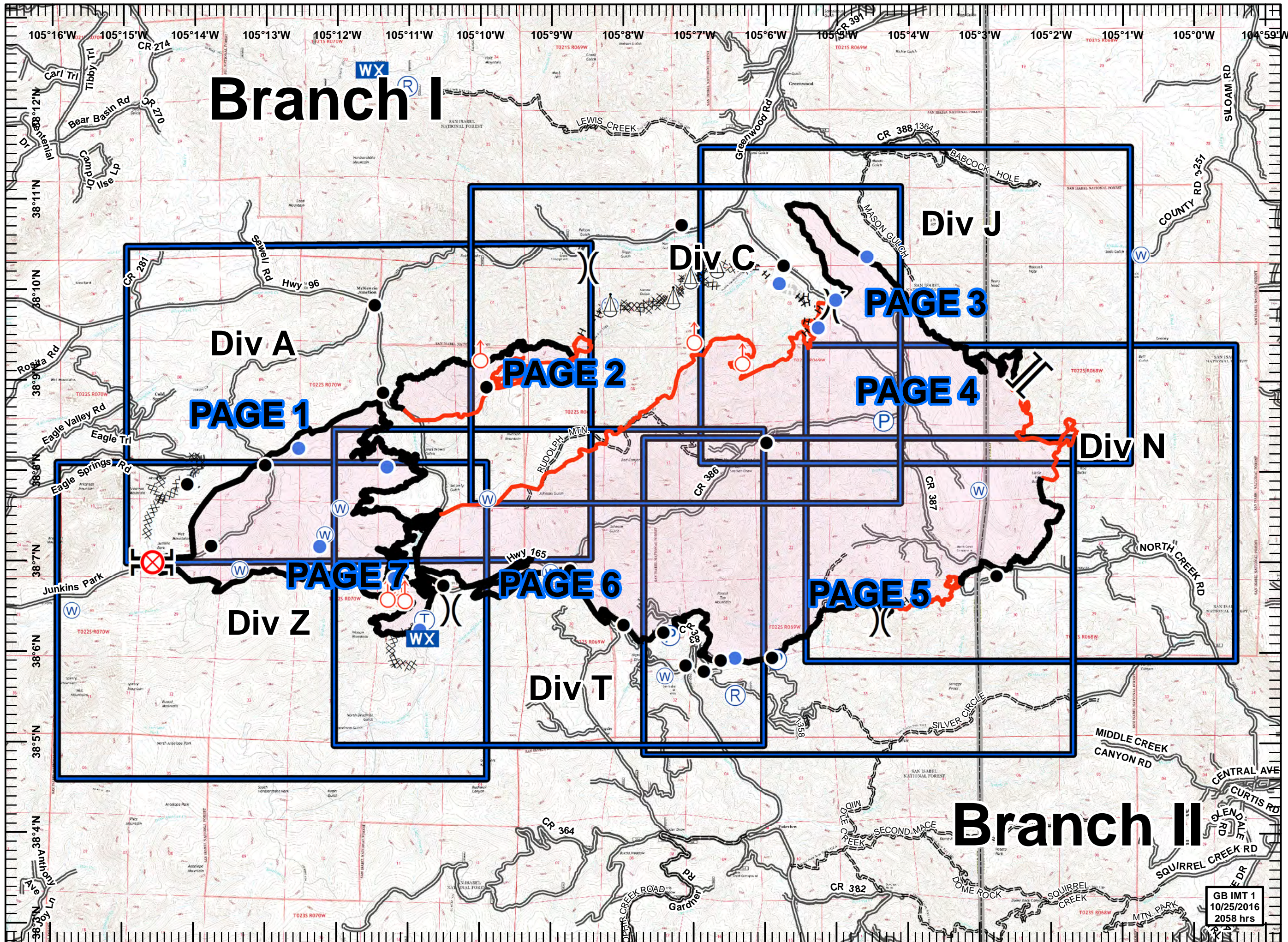
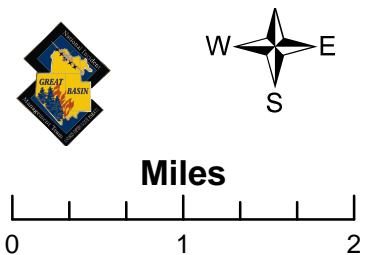


**Junkins Fire**  
**CO-CUX-002046**  
**10/26/16**  
**IAP**  
**Day**  
**NAD 83**

17,675 Acres  
 10/25/2016 2000 hrs

- Branch Break
- Division Break
- Drop Point
- Fire Origin
- Helispot
- Mobile Weather Unit
- Pump
- Repeater
- Sling Site
- Spot Fire
- Telephone
- Water Source
- Uncontrolled Fire Edge
- Completed Line
- Completed Dozer Line
- Hand Line
- Wildfire Daily Fire Perimeter
- Completed Burnout
- Trails
- Roads



GB IMT 1  
 10/25/2016  
 2058 hrs

**Legend**

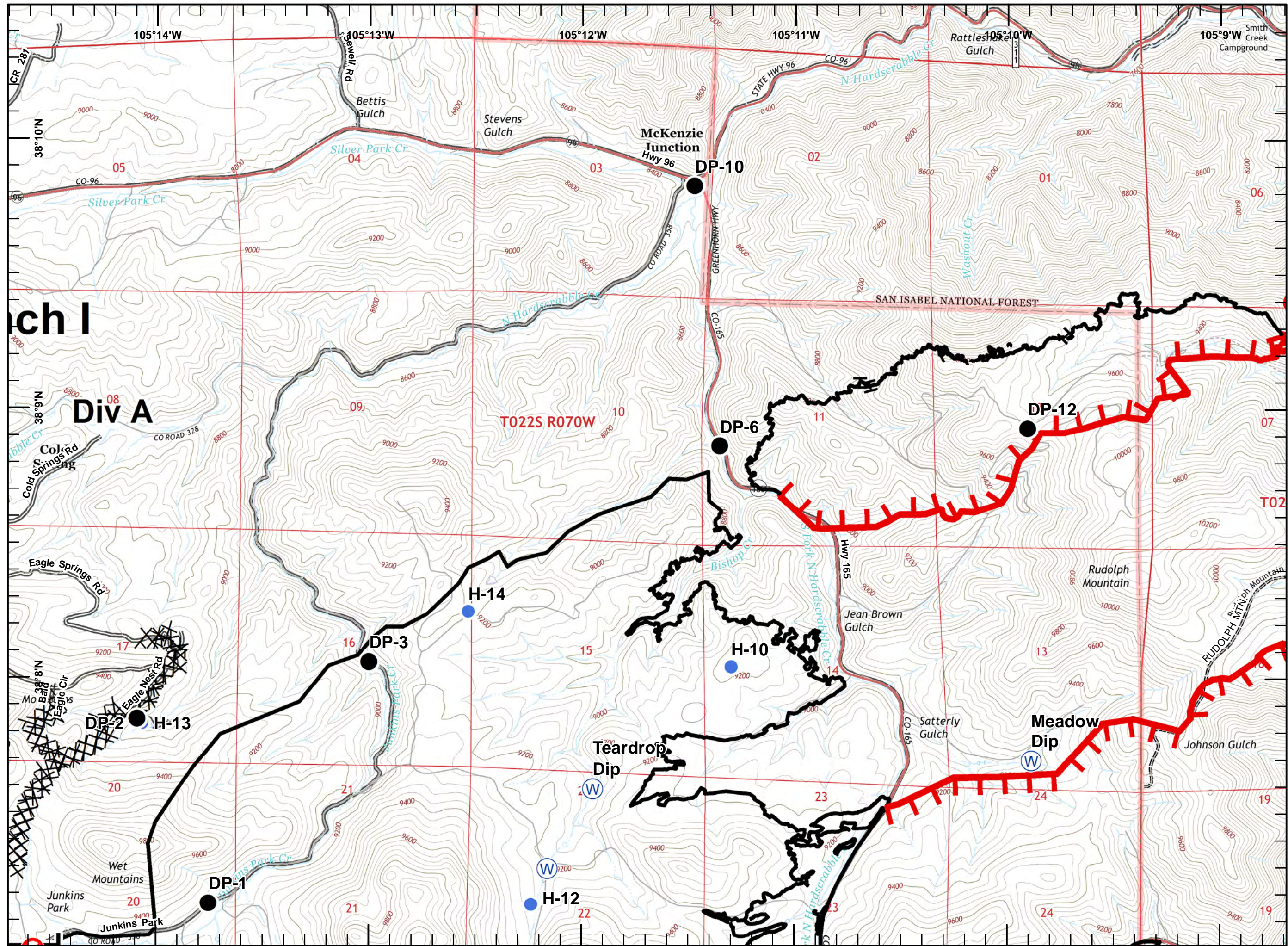
- Branch Break
- Drop Point
- Fire Origin
- Helispot
- Water Source
- Uncontrolled Fire Edge
- Completed Line
- Completed Dozer Line
- Hand Line
- Trails
- Roads



**Scale**

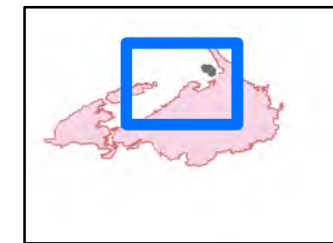
Miles  
 0 0.25 0.5

17,675 Acres  
 10/25/2016 2000 hrs

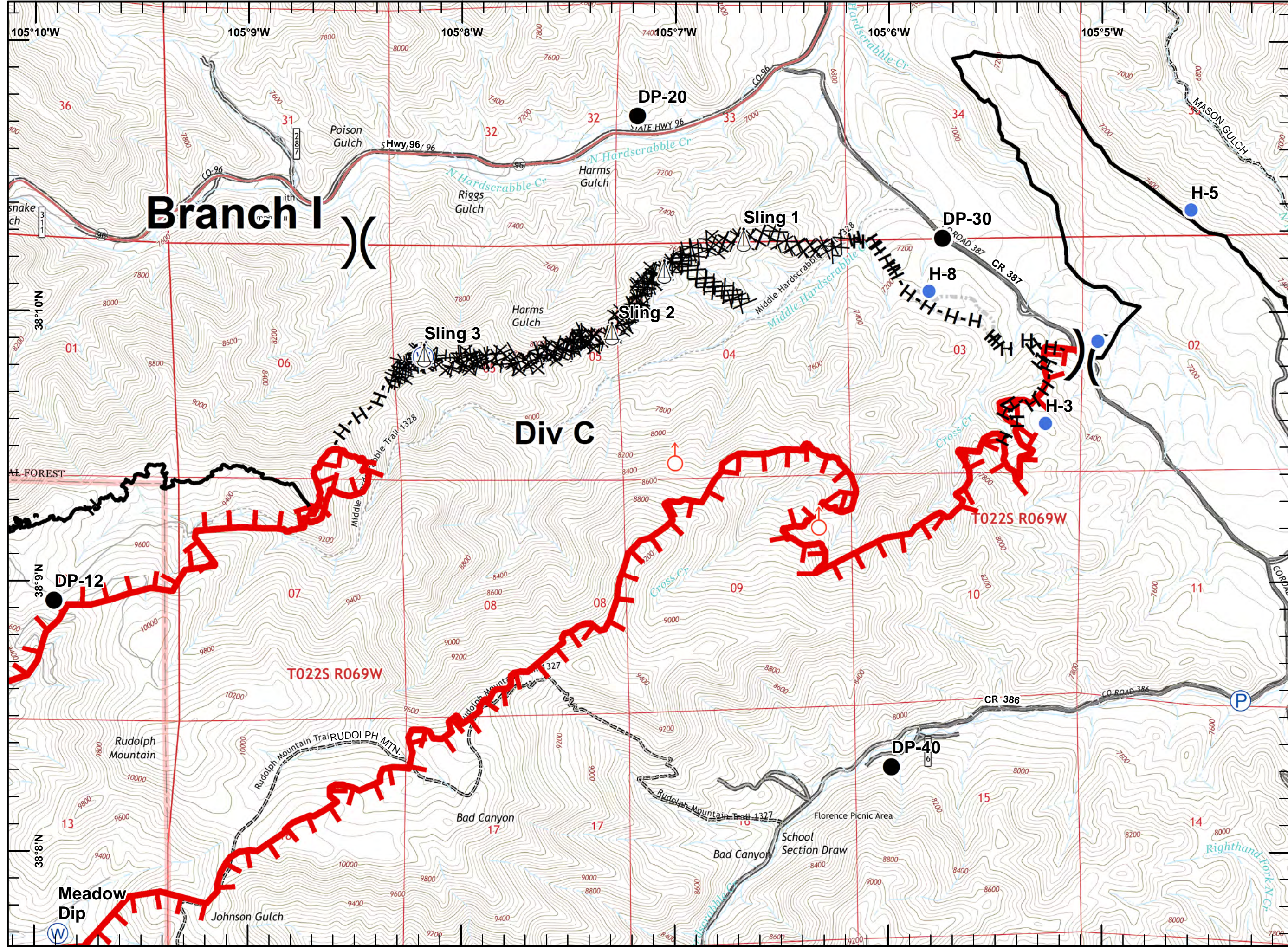















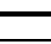
**Legend**

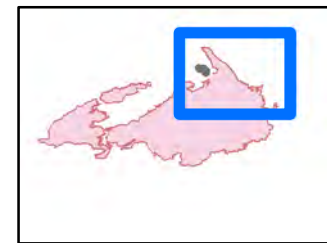
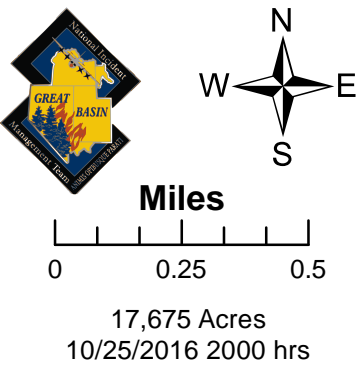
- Division Break
- Drop Point
- Helispot
- Pump
- Sling Site
- Spot Fire
- Water Source
- Uncontrolled Fire Edge
- Completed Line
- Completed Dozer Line
- Hand Line
- Completed Burnout
- Trails
- Roads



17,675 Acres  
10/25/2016 2000 hrs



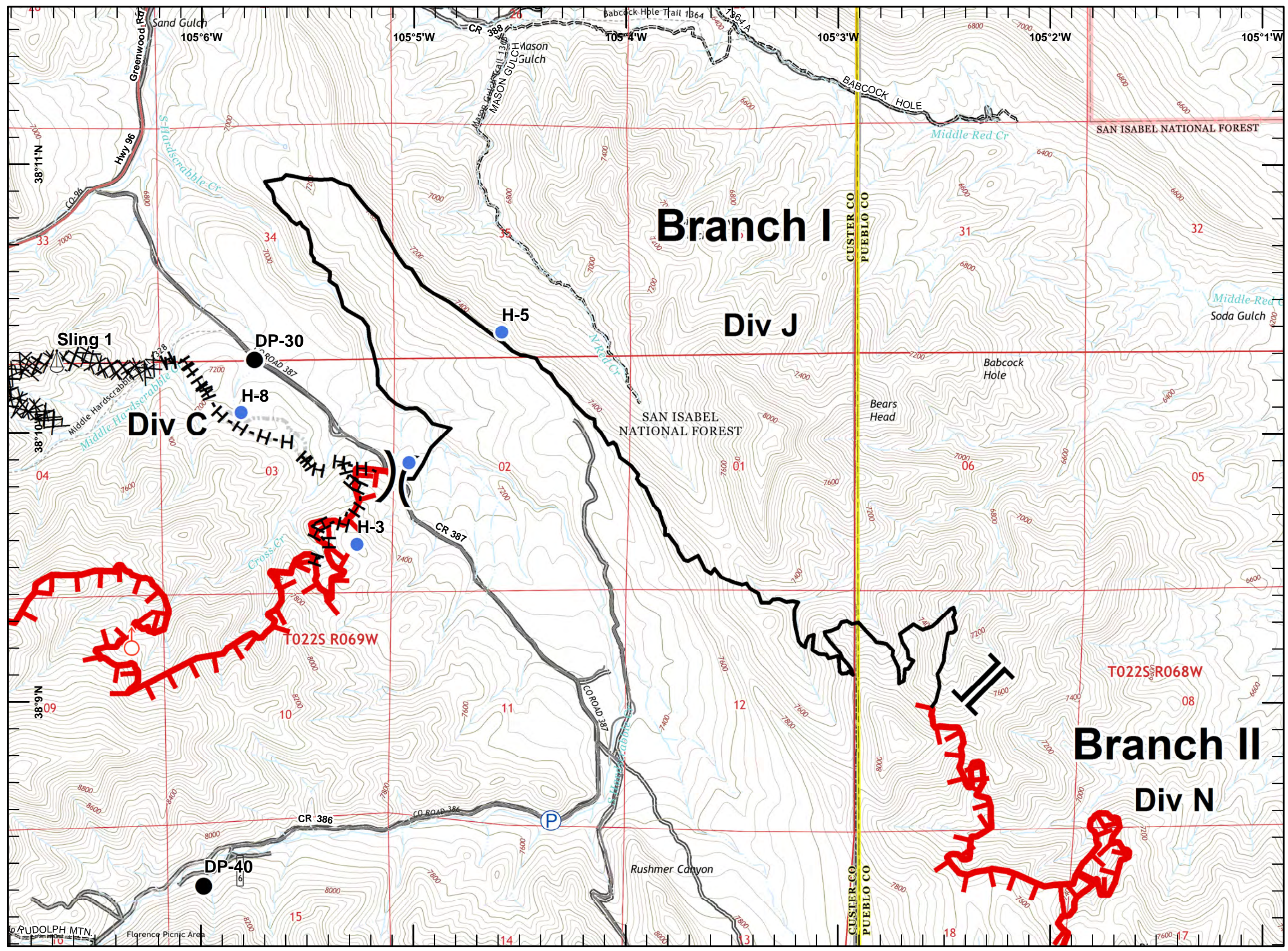
-  Branch Break
-  Division Break
-  Drop Point
-  Helispot
-  Pump
-  Sling Site
-  Spot Fire
-  Uncontrolled Fire Edge
-  Completed Line
-  Completed Dozer Line
-  Hand Line
-  Completed Burnout
-  Trails
-  Roads

W N E S

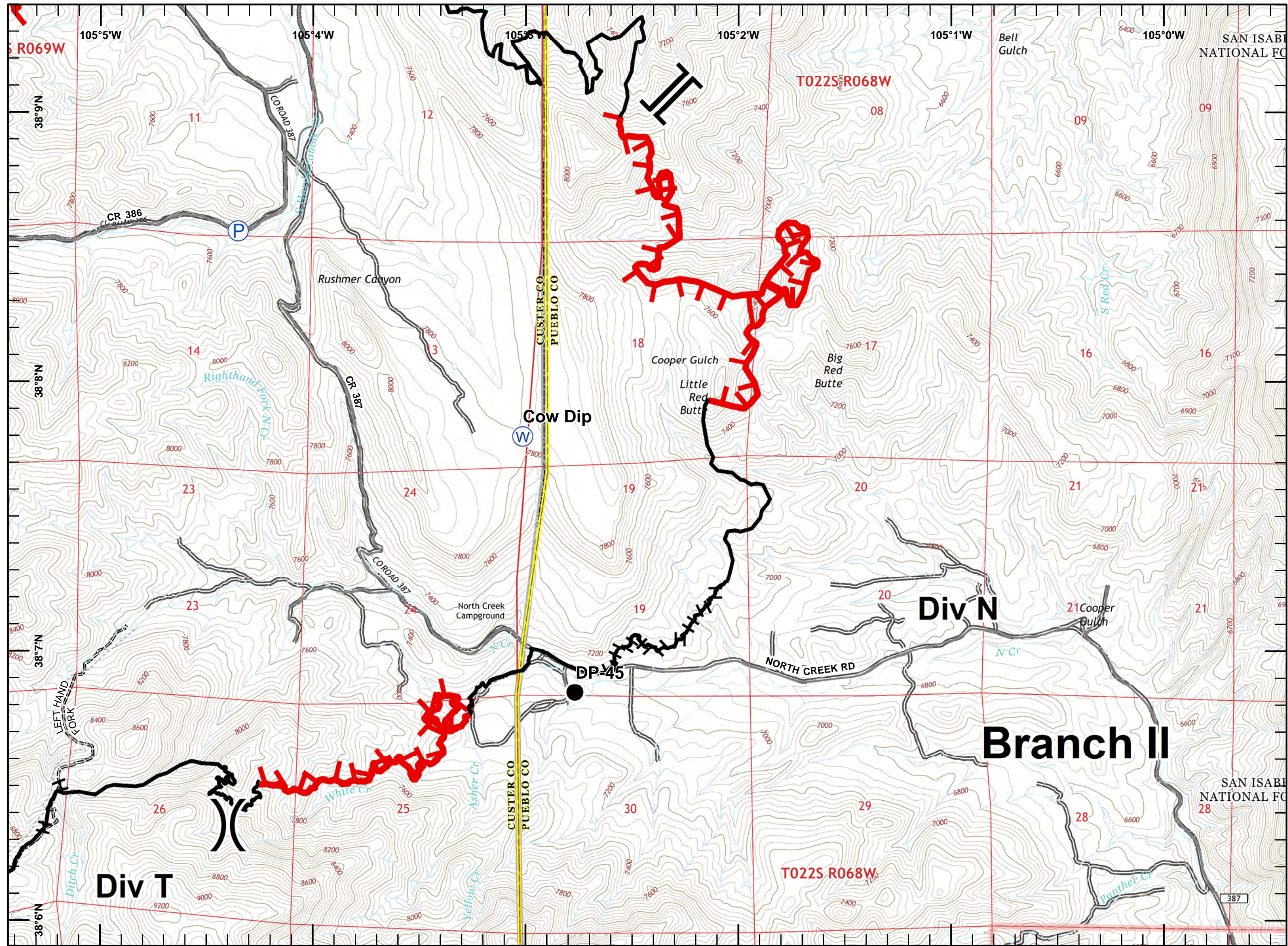
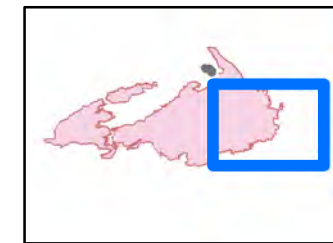
Miles  
 0 0.25 0.5

17,675 Acres  
 10/25/2016 2000 hrs



**Legend**

- Branch Break
- Division Break
- Drop Point
- Pump
- Water Source
- Uncontrolled Fire Edge
- Completed Line
- Hand Line
- Trails
- Roads



Junkins Fire  
CO-CUX-002046

10/26/16

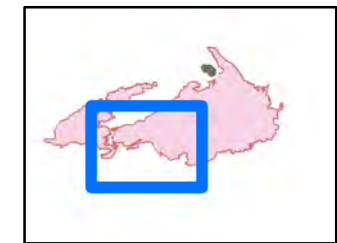
Day

NAD 83

PAGE 5 Div T (west)

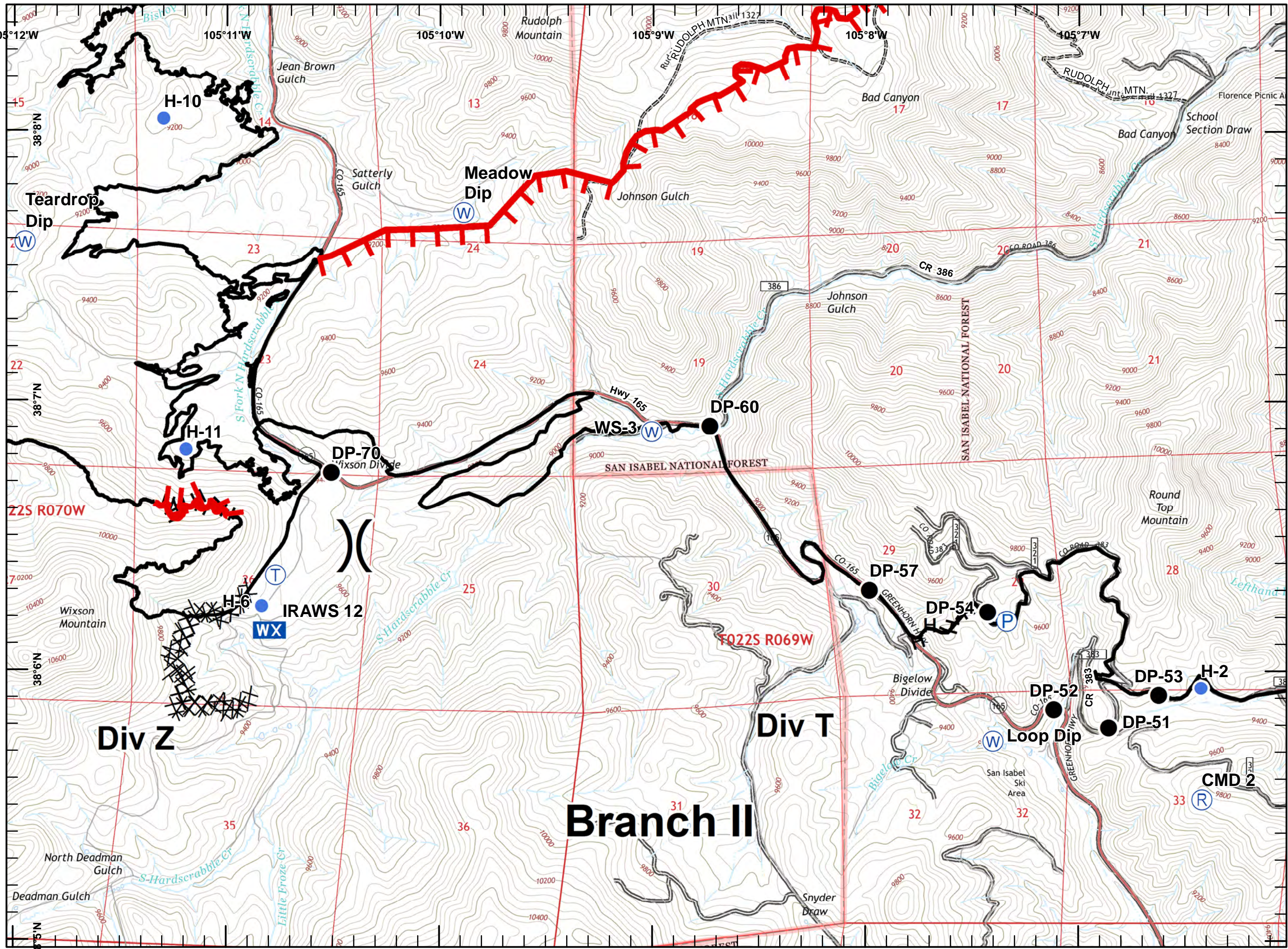
Legend:

- Division Break
- Drop Point
- Helispot
- Mobile Weather Unit (WX)
- Pump (P)
- Repeater (R)
- Telephone (T)
- Water Source (W)
- Uncontrolled Fire Edge
- Completed Line
- Completed Dozer Line
- Hand Line (H-)
- Trails
- Roads



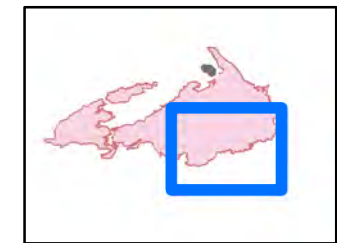
Miles  
0 0.25 0.5

17,675 Acres  
10/25/2016 2000 hrs



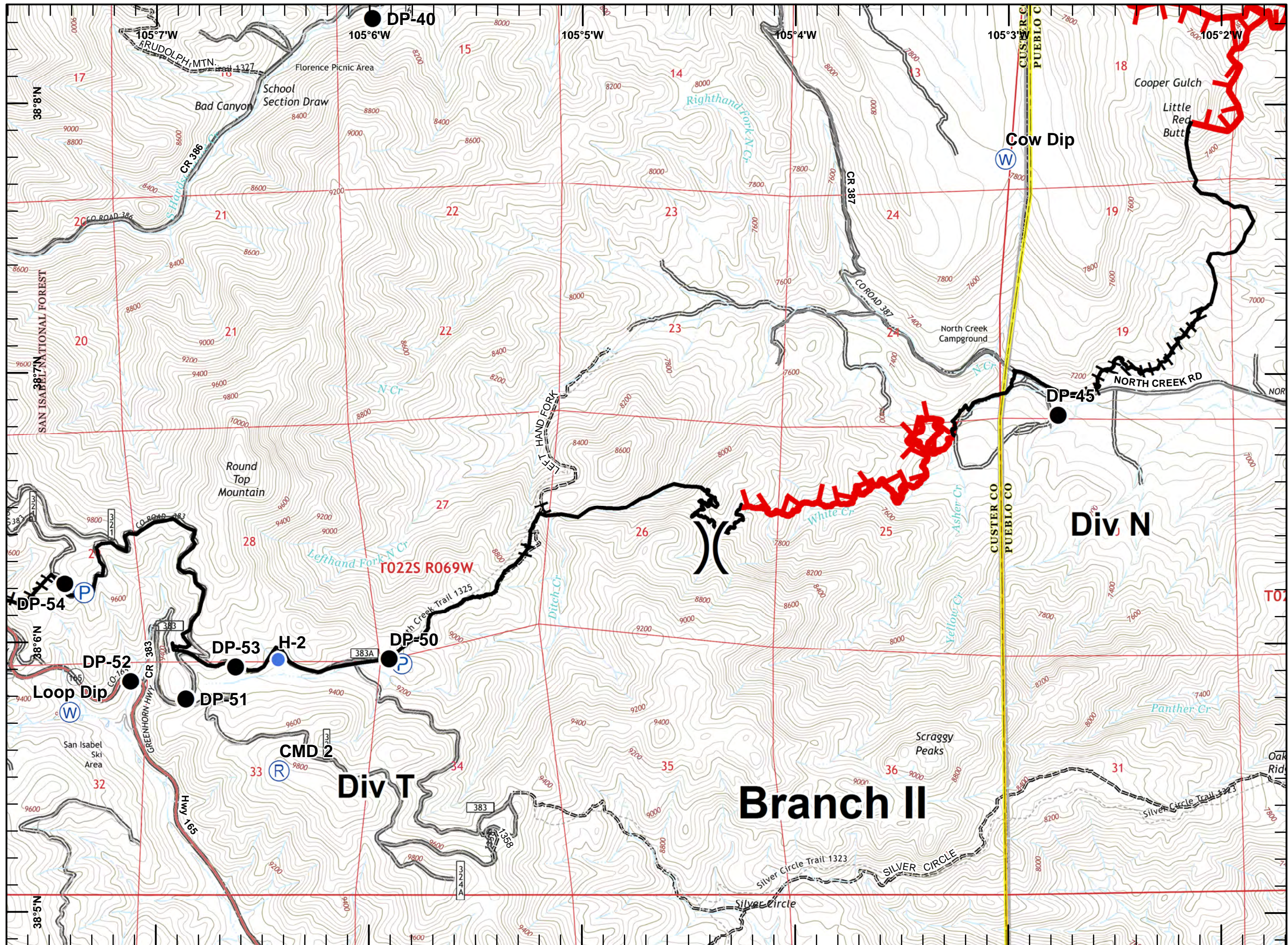
Legend:

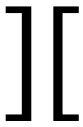
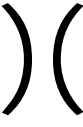










- )) ( Division Break
- Drop Point
- Helispot
- Ⓟ Pump
- Ⓡ Repeater
- Ⓜ Water Source
- ┌ Uncontrolled Fire Edge
- Completed Line
- H- Hand Line
- == Trails
- == Roads

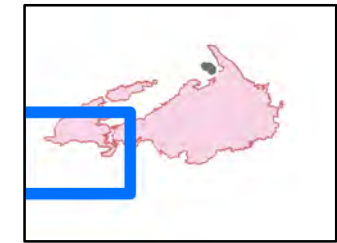



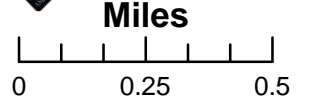
Miles  
0 0.25 0.5

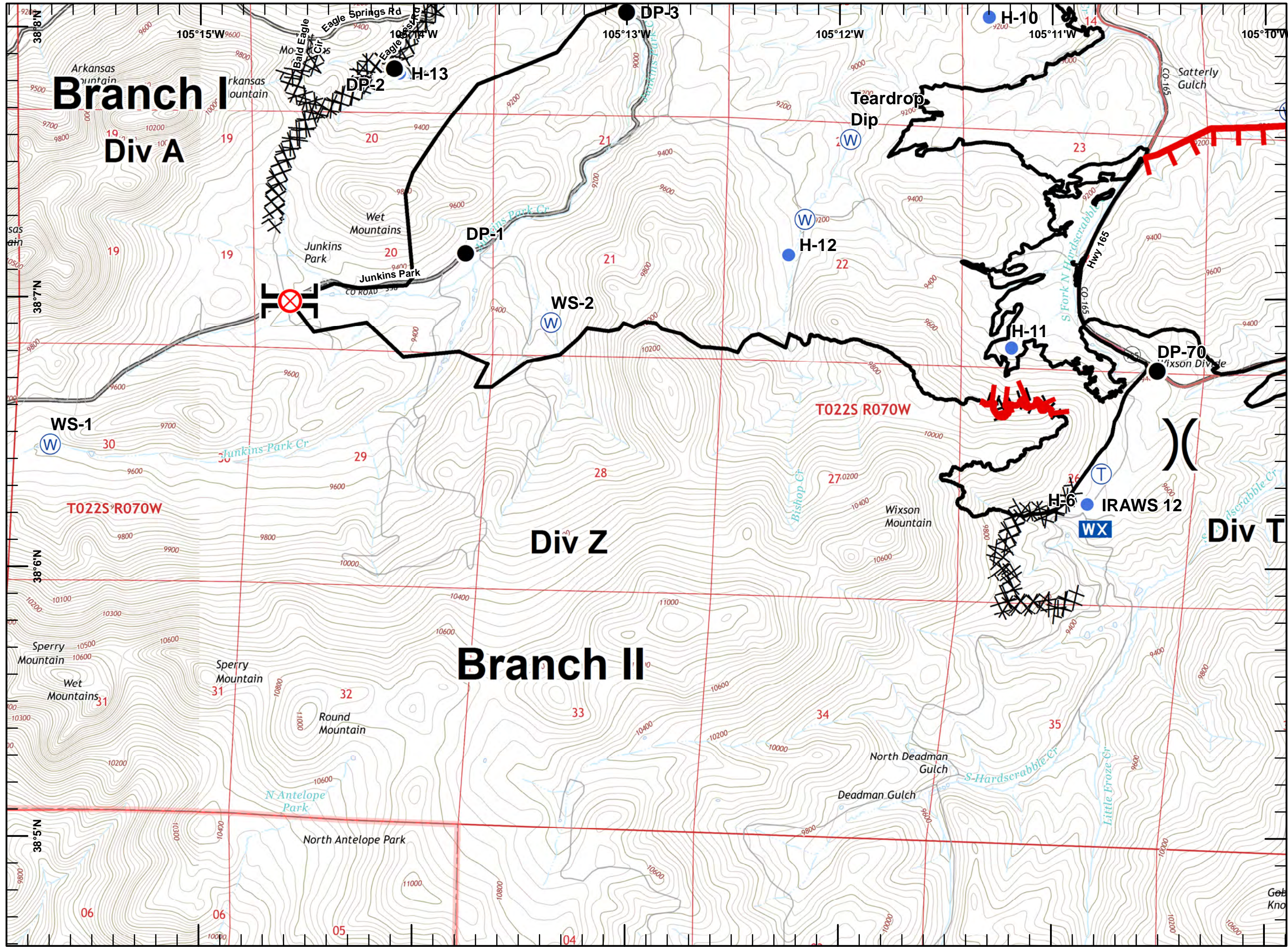
17,675 Acres  
10/25/2016 2000 hrs



 Branch Break  
 Division Break  
 Drop Point  
 Fire Origin  
 Helispot  
 Mobile Weather Unit  
 Telephone  
 Water Source  
 Uncontrolled Fire Edge  
 Completed Line  
 Completed Dozer Line  
 Hand Line



  
  
 Miles  
 0 0.25 0.5  
 17,675 Acres  
 10/25/2016 2000 hrs





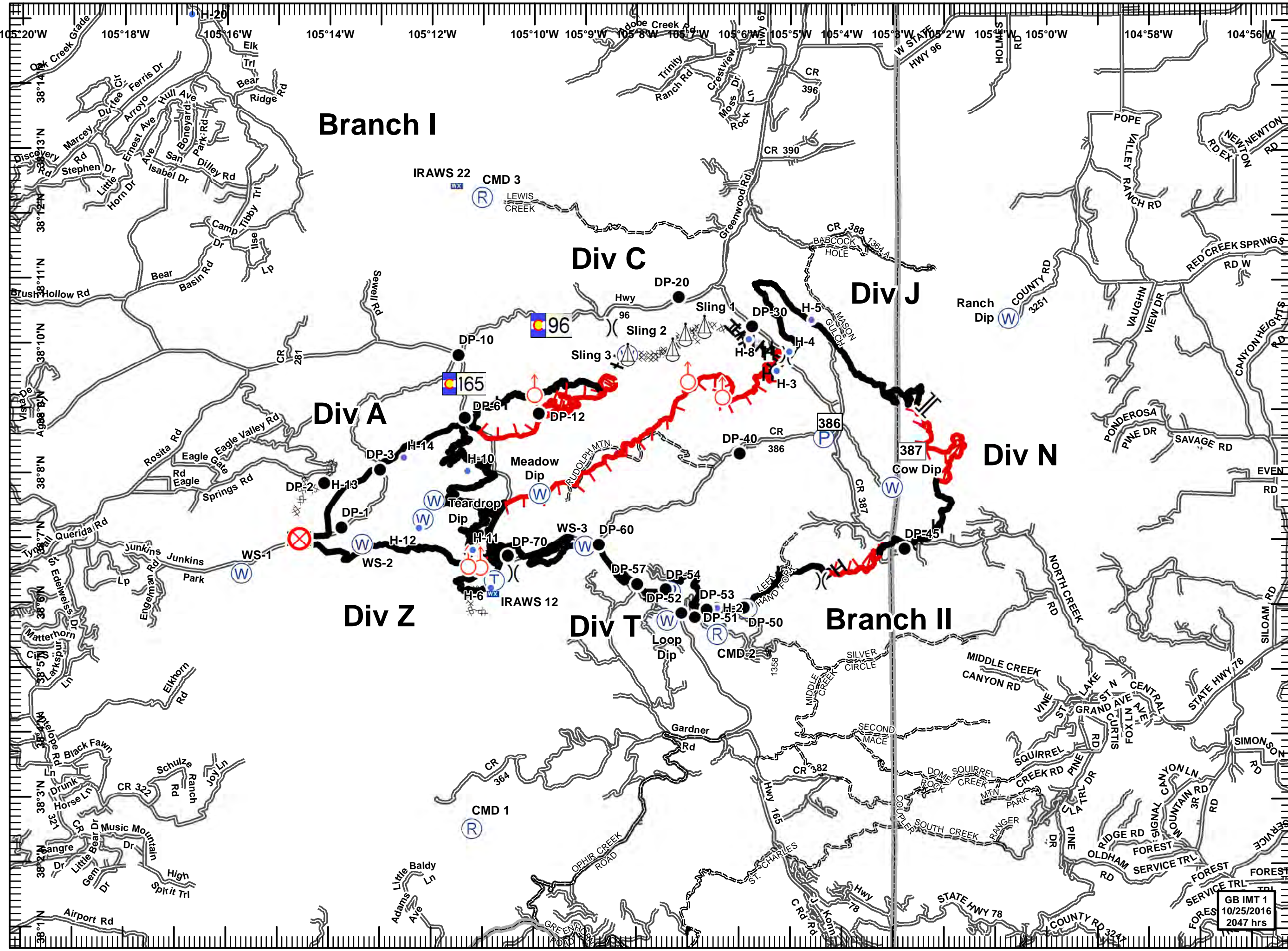
**Junkins Fire**  
**CO-CUX-002046**  
**10/26/16**  
**IAP**  
**Day**  
**NAD 83**  
**Transportation**

17,675 acres  
 MMA Flight and  
 Field Data  
 10/25/2016 2000 hrs

- Branch Break
- Division Break
- Drop Point
- Fire Origin
- Helispot
- Mobile Weather Unit
- Pump
- Repeater
- Sling Site
- Spot Fire
- Telephone
- Water Source
- Uncontrolled Fire Edge
- Completed Line
- Completed Dozer Line
- Hand Line
- Wildfire Daily Fire Perimeter
- Completed Burnout
- Trails
- Roads

W N E  
S

Miles  
 0 1 2



GB IMT 1  
 10/25/2016  
 2047 hrs