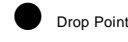
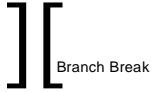


**Junkins Fire**  
**CO-CUX-002046**  
**10/31/16**  
**IAP**  
**Day**  
**NAD 83**  
 18,403 Acres  
 10/29/2016 2000 hrs



Uncontrolled Fire Edge

Completed Line

Completed Dozer Line

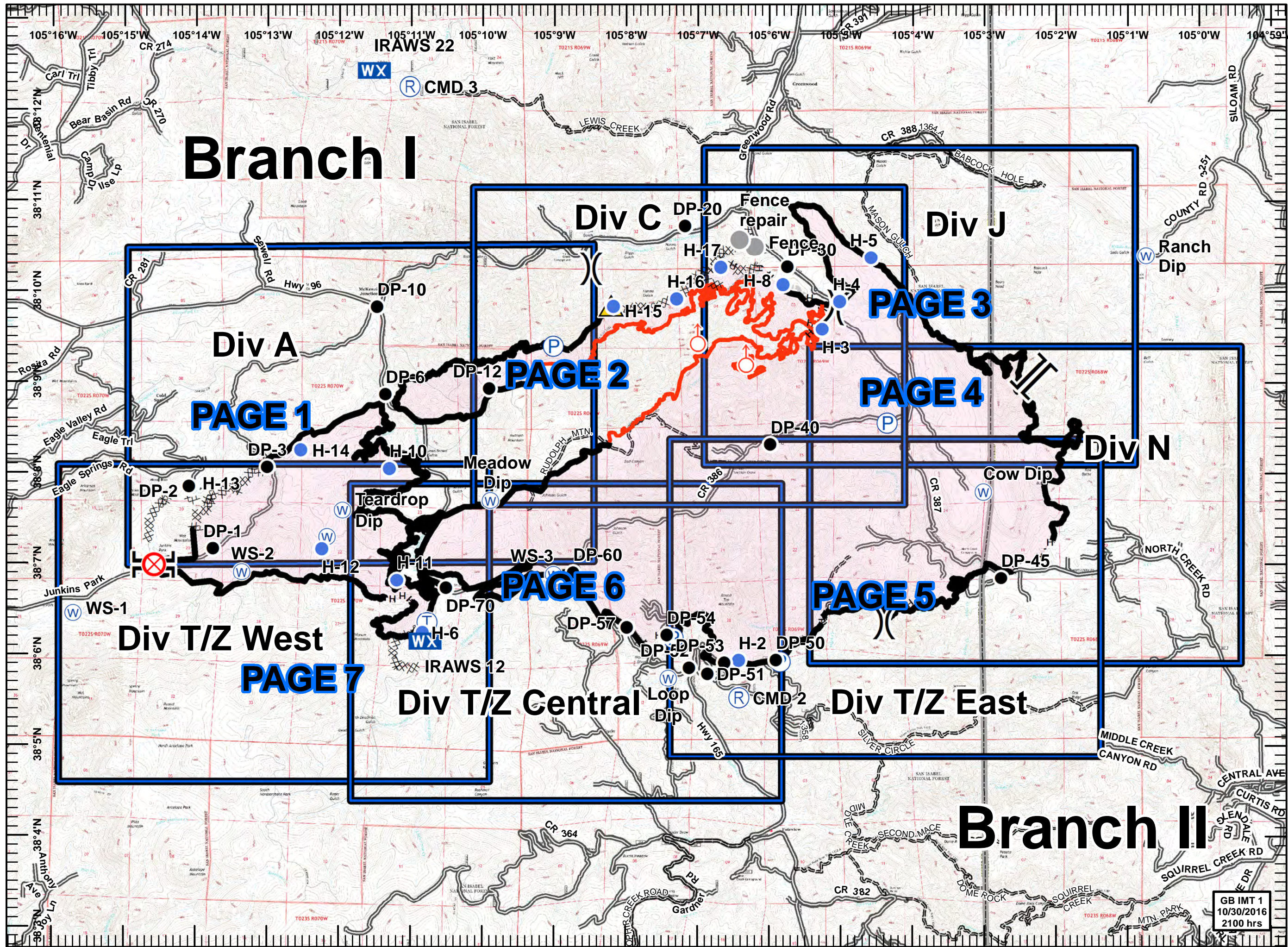
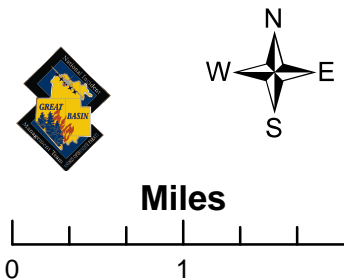
H - Hand Line

Wildfire Daily Fire Perimeter

Completed Burnout

Trails

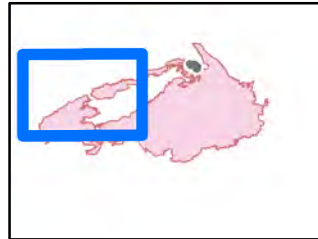
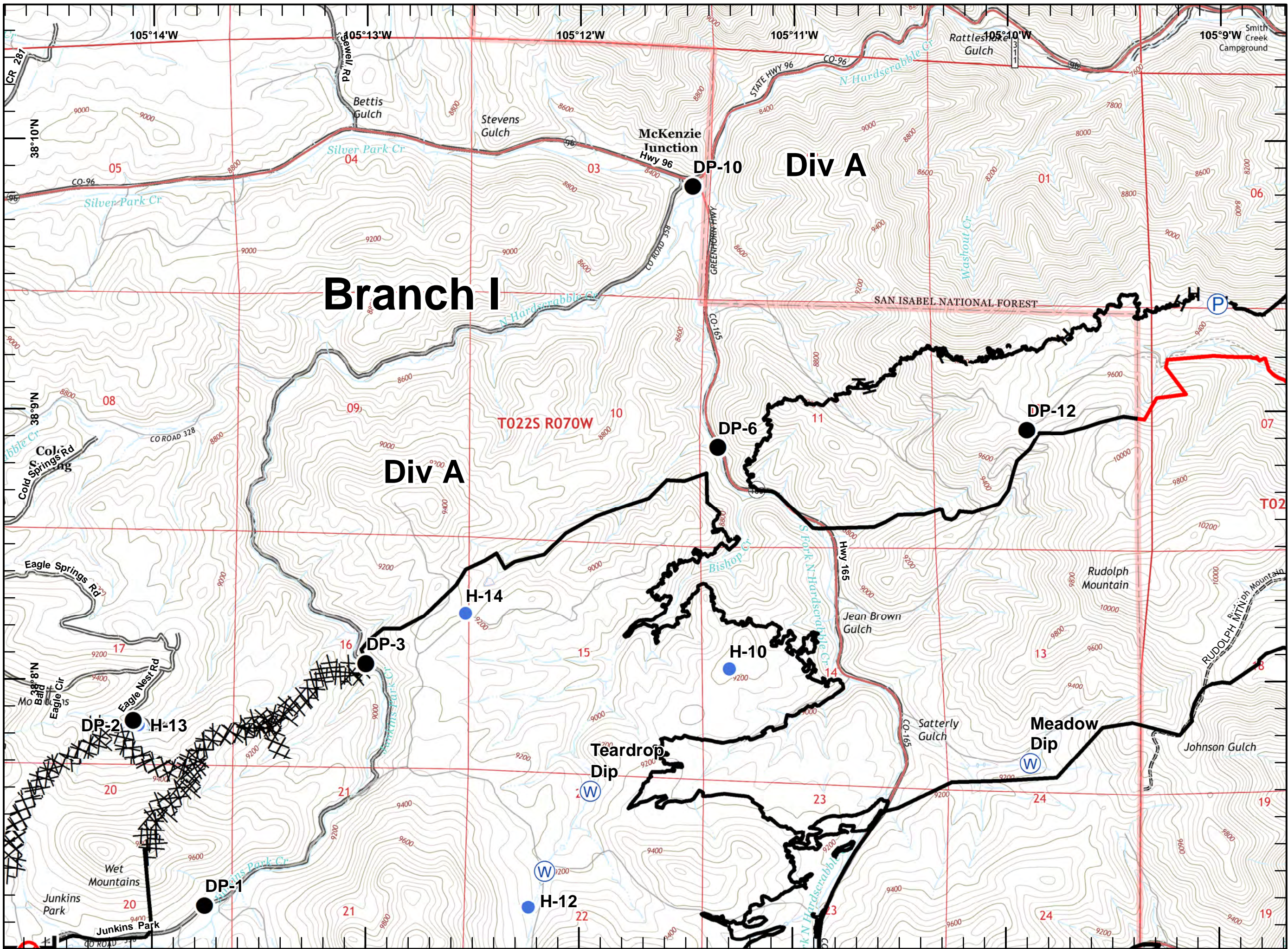
Roads



GB IMT 1  
 10/30/2016  
 2100 hrs

**Legend**

- Branch Break
- Drop Point
- Fire Origin
- Helispot
- Pump
- Water Source
- Uncontrolled Fire Edge
- Completed Line
- Completed Dozer Line
- Hand Line
- Trails
- Roads



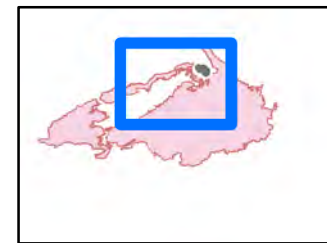
**Scale**

Miles  
0 0.25 0.5

18,403 Acres  
10/29/2016 2000 hrs

**Legend**

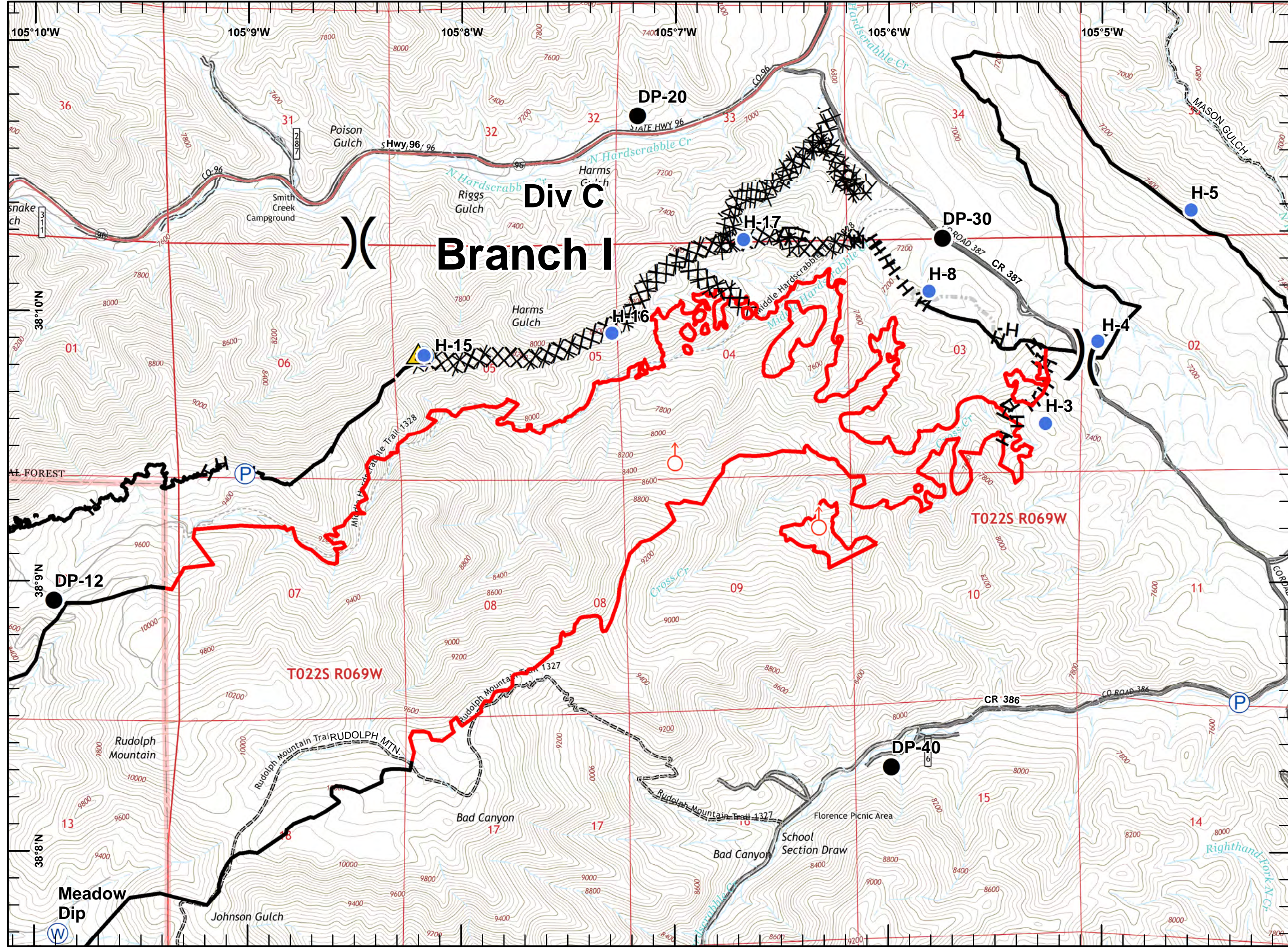
- Division Break
- Drop Point
- Helispot
- Pump
- Safety Zone
- Spot Fire
- Water Source
- Uncontrolled Fire Edge
- Completed Line
- Completed Dozer Line
- Hand Line
- Completed Burnout Trails
- Roads










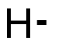





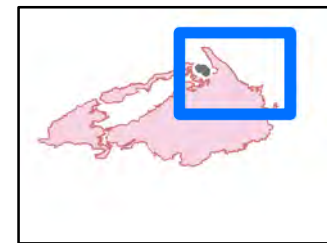
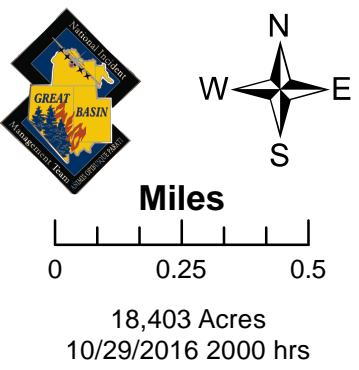
**Scale**

Miles  
0 0.25 0.5

18,403 Acres  
10/29/2016 2000 hrs

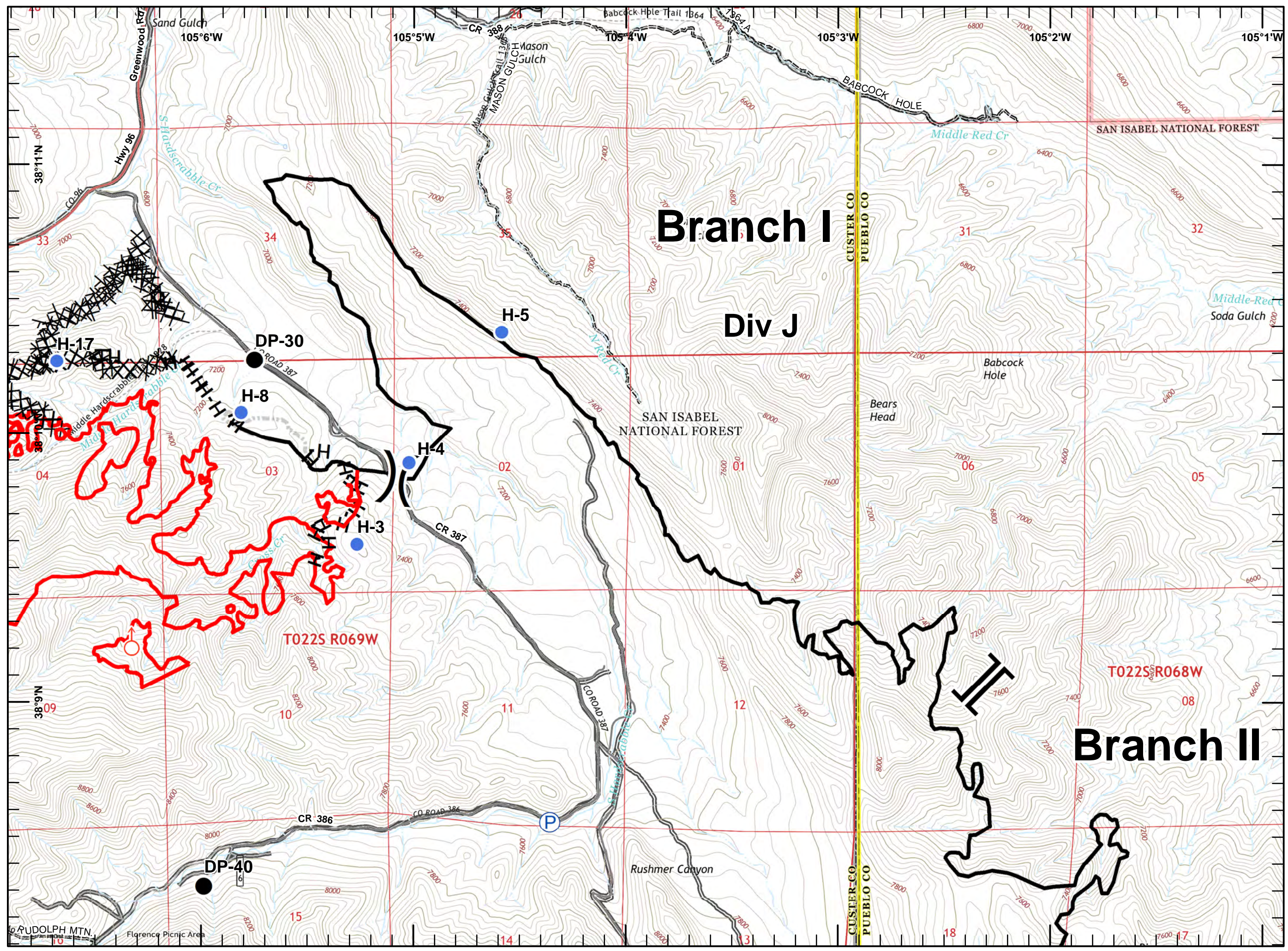


-  Branch Break
-  Division Break
-  Drop Point
-  Helispot
-  Pump
-  Spot Fire
-  Uncontrolled Fire Edge
-  Completed Line
-  Completed Dozer Line
-  Hand Line
-  Completed Burnout
-  Trails
-  Roads









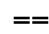




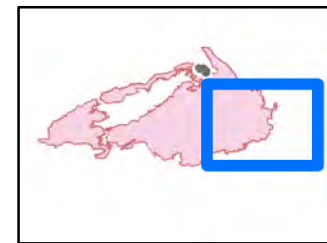
**Miles**  
 0 0.25 0.5


18,403 Acres  
 10/29/2016 2000 hrs



**Legend**

-  Branch Break
-  Division Break
-  Drop Point
-  Pump
-  Water Source
-  Uncontrolled Fire Edge
-  Completed Line
-  Hand Line
-  Trails
-  Roads

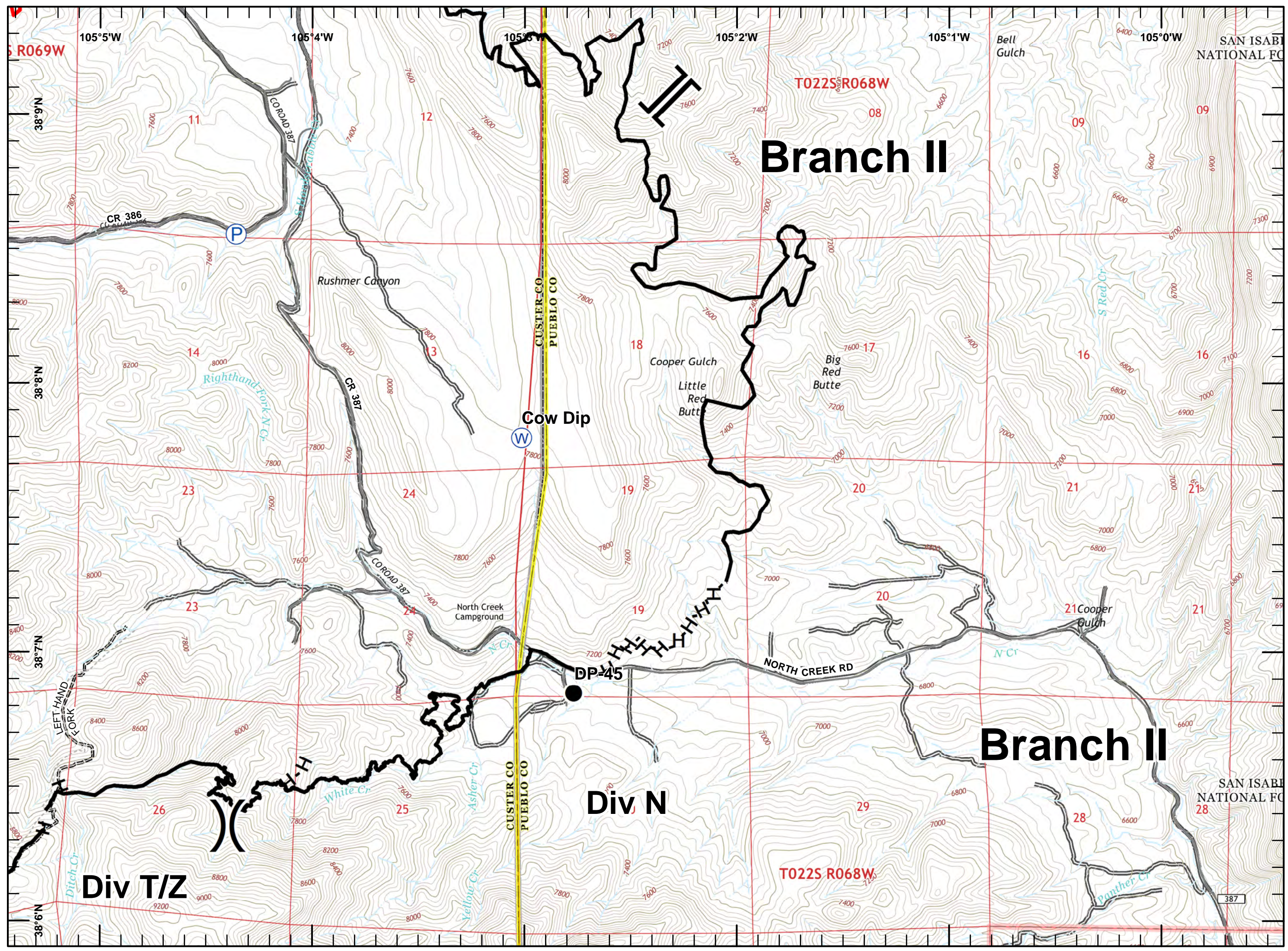


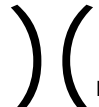






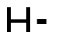
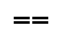



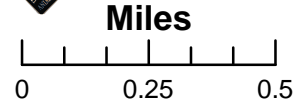
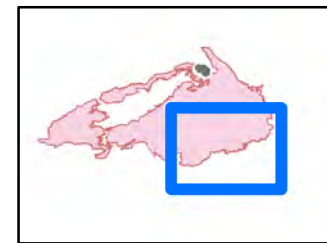
**Miles**

0 0.25 0.5

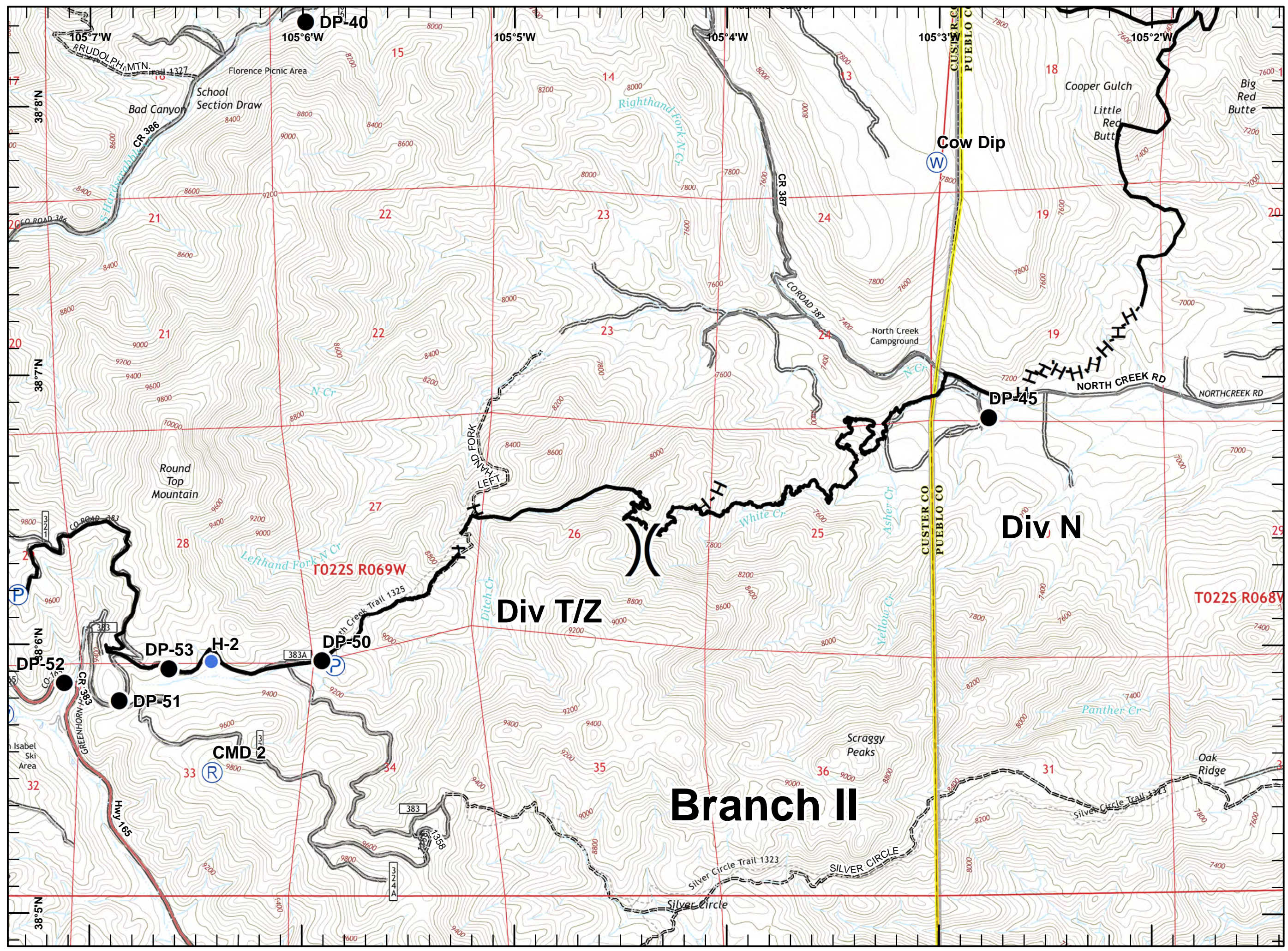
18,403 Acres  
 10/29/2016 2000 hrs



 Division Break  
 Drop Point  
 Helispot  
 Pump  
 Repeater  
 Water Source  
 Completed Line  
 Hand Line  
 Trails  
 Roads




18,403 Acres  
 10/29/2016 2000 hrs

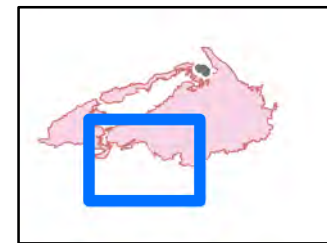



**Div T/Z**

**Div N**

**Branch II**

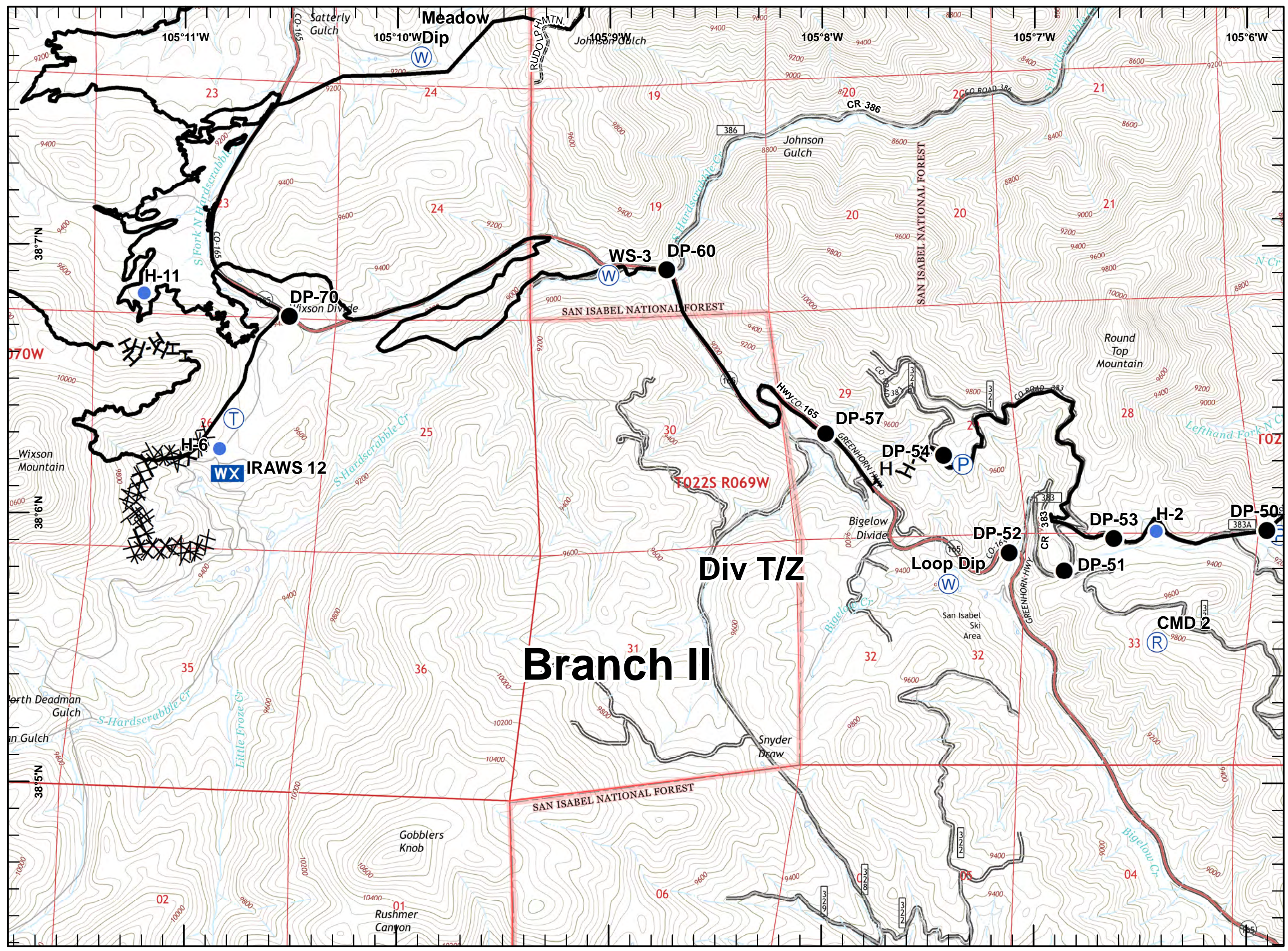
-  Drop Point
-  Helispot
-  Mobile Weather Unit
-  Pump
-  Repeater
-  Telephone
-  Water Source
-  Completed Line
-  Completed Dozer Line
-  Hand Line
-  Trails
-  Roads

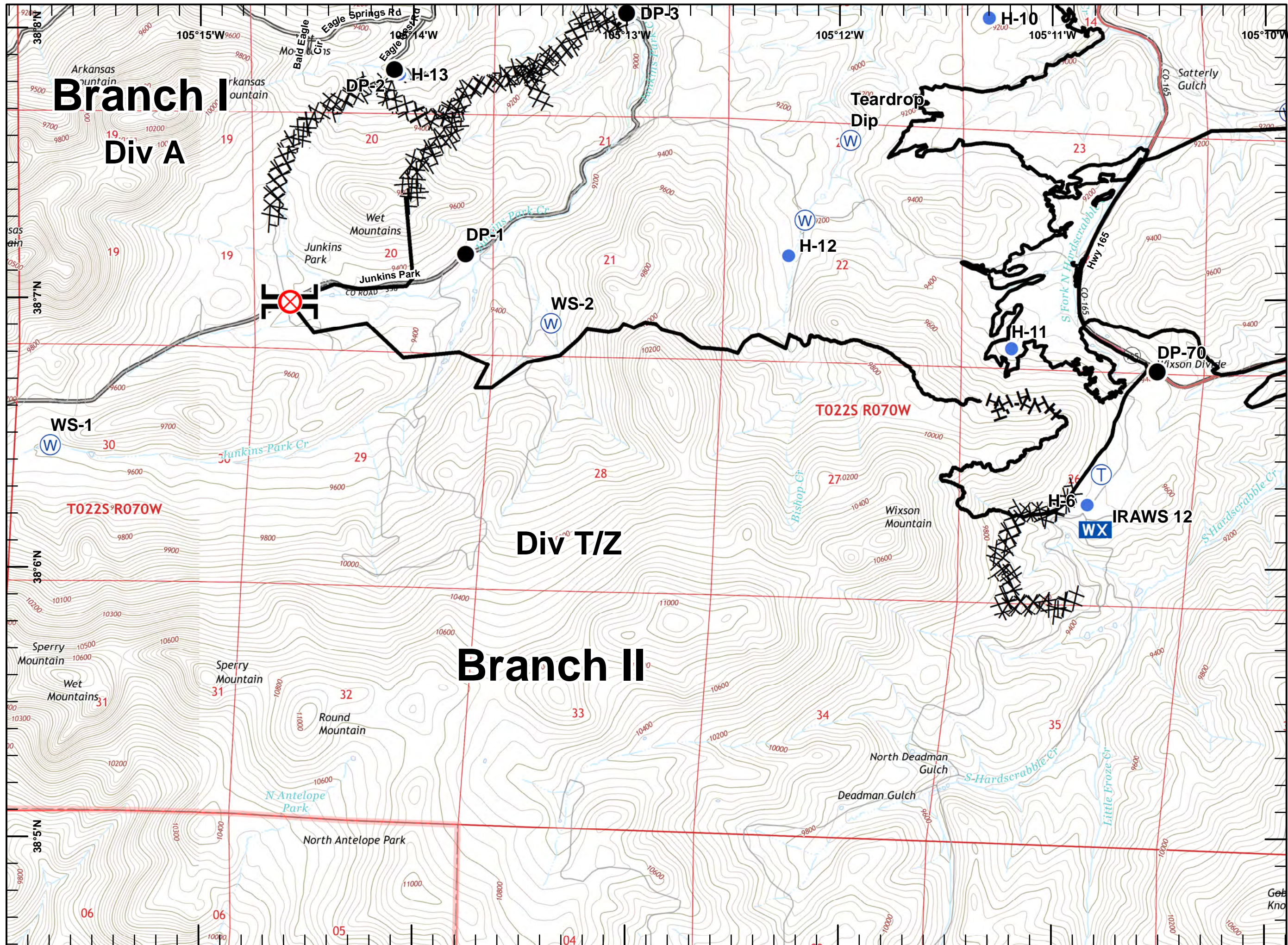



**Miles**

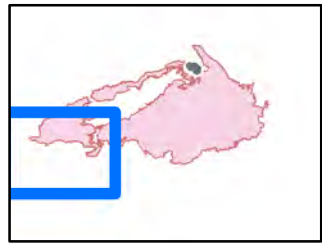
0 0.25 0.5

18,403 Acres  
 10/29/2016 2000 hrs





- Branch Break
- Drop Point
- Fire Origin
- Helispot
- Mobile Weather Unit
- Telephone
- Water Source
- Completed Line
- Completed Dozer Line
- Hand Line



**Miles**  
 0 0.25 0.5

18,403 Acres  
 10/29/2016 2000 hrs

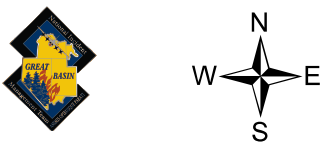


**Junkins Fire**  
**CO-CUX-002046**  
**10/30/16**  
**IAP**  
**Day**  
**NAD 83**  
**Transportation**

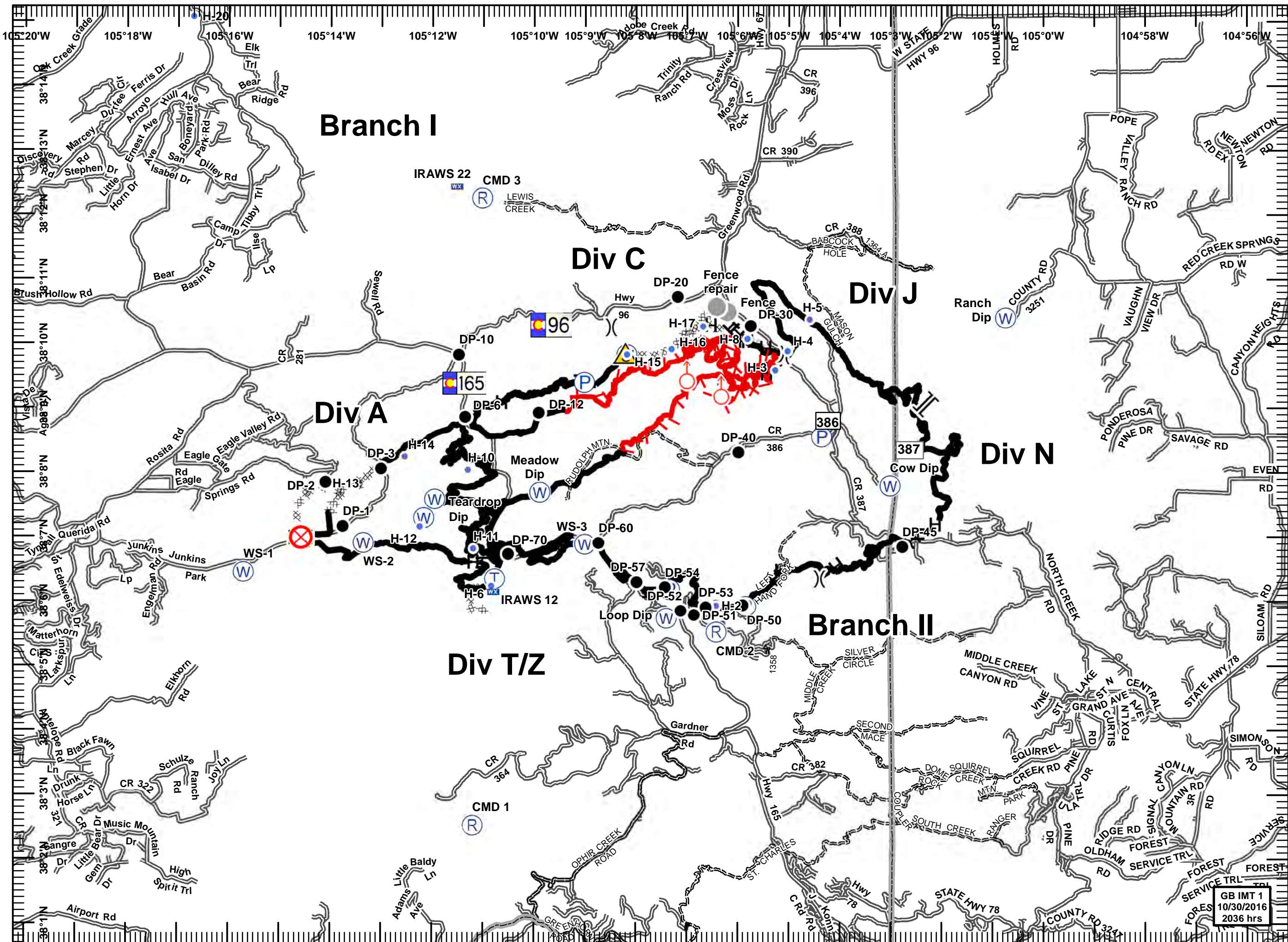
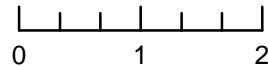
18,403 acres  
 MMA Flight and  
 Field Data  
 10/29/2016 2000 hrs

- Branch Break
- Division Break
- Drop Point
- Fire Origin
- Helispot
- Mobile Weather Unit
- Pump
- Repeater
- Safety Zone
- Spot Fire
- Telephone
- Water Source
- Other

- Uncontrolled Fire Edge
- Completed Line
- Completed Dozer Line
- Hand Line
- Wildfire Daily Fire Perimeter
- Completed Burnout
- Trails
- Roads



Miles



GB IMT 1  
 10/30/2016  
 2036 hrs