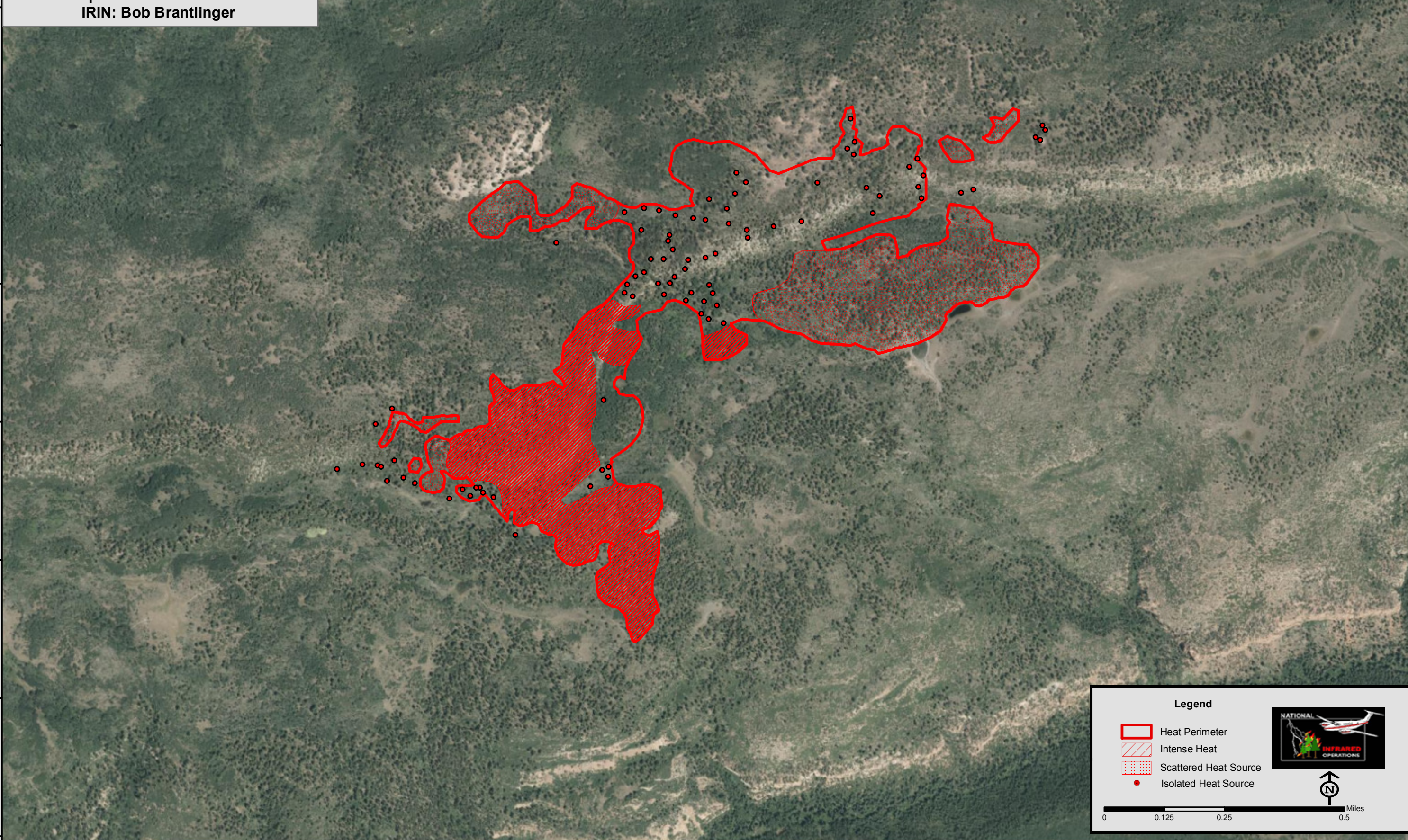


108°32'15"W 108°32'0"W 108°31'45"W 108°31'30"W 108°31'15"W 108°31'0"W 108°30'45"W 108°30'30"W 108°30'15"W 108°30'0"W 108°29'45"W 108°29'30"W 108°29'15"W

Kelso
Incident # - CO-GMF-000162
Infrared Imagery Map
Imagery Flown June 21, 2016 - 0150 hours
Interpreted Acres: 278 Acres
IRIN: Bob Brantlinger







38°34'0"N
38°33'45"N
38°33'30"N
38°33'15"N
38°33'0"N
38°32'45"N
38°32'30"N

38°34'15"N
38°34'0"N
38°33'45"N
38°33'30"N
38°33'15"N
38°33'0"N
38°32'45"N

108°32'0"W 108°31'45"W 108°31'30"W 108°31'15"W 108°31'0"W 108°30'45"W 108°30'30"W 108°30'15"W 108°30'0"W 108°29'45"W 108°29'30"W 108°29'15"W 108°29'0"W

Legend

-  Heat Perimeter
-  Intense Heat
-  Scattered Heat Source
-  Isolated Heat Source

