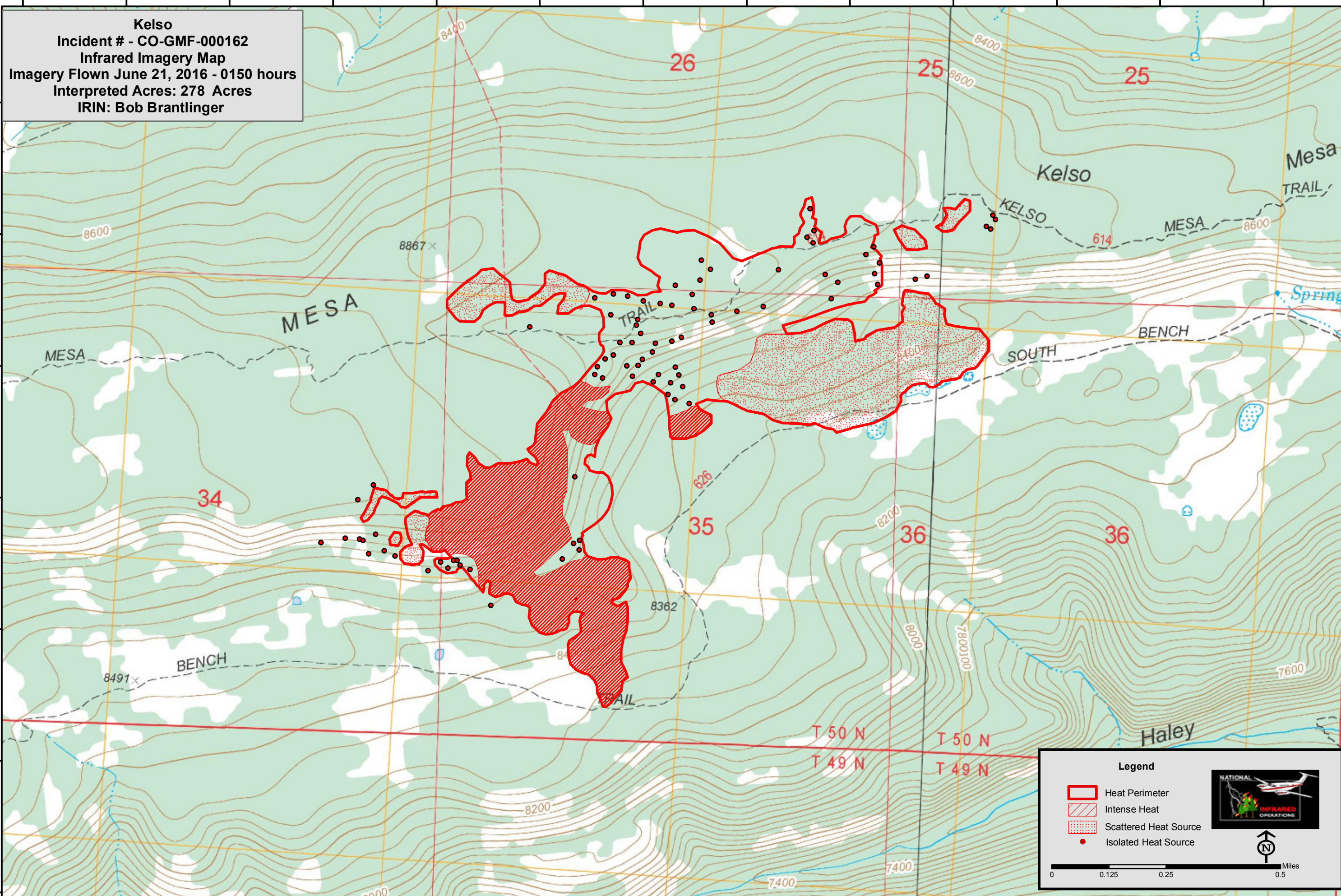


108°32'15"W 108°32'0"W 108°31'45"W 108°31'30"W 108°31'15"W 108°31'0"W 108°30'45"W 108°30'30"W 108°30'15"W 108°30'0"W 108°29'45"W 108°29'30"W 108°29'15"W

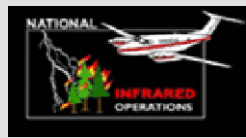
Kelso
Incident # - CO-GMF-000162
Infrared Imagery Map
Imagery Flown June 21, 2016 - 0150 hours
Interpreted Acres: 278 Acres
IRIN: Bob Brantlinger



38°34'15"N
38°34'0"N
38°33'45"N
38°33'30"N
38°33'15"N
38°33'0"N
38°32'45"N
38°32'30"N

Legend

- Heat Perimeter
- Intense Heat
- Scattered Heat Source
- Isolated Heat Source



Miles
0 0.125 0.25 0.5

108°32'0"W 108°31'45"W 108°31'30"W 108°31'15"W 108°31'0"W 108°30'45"W 108°30'30"W 108°30'15"W 108°30'0"W 108°29'45"W 108°29'30"W 108°29'15"W 108°29'0"W