



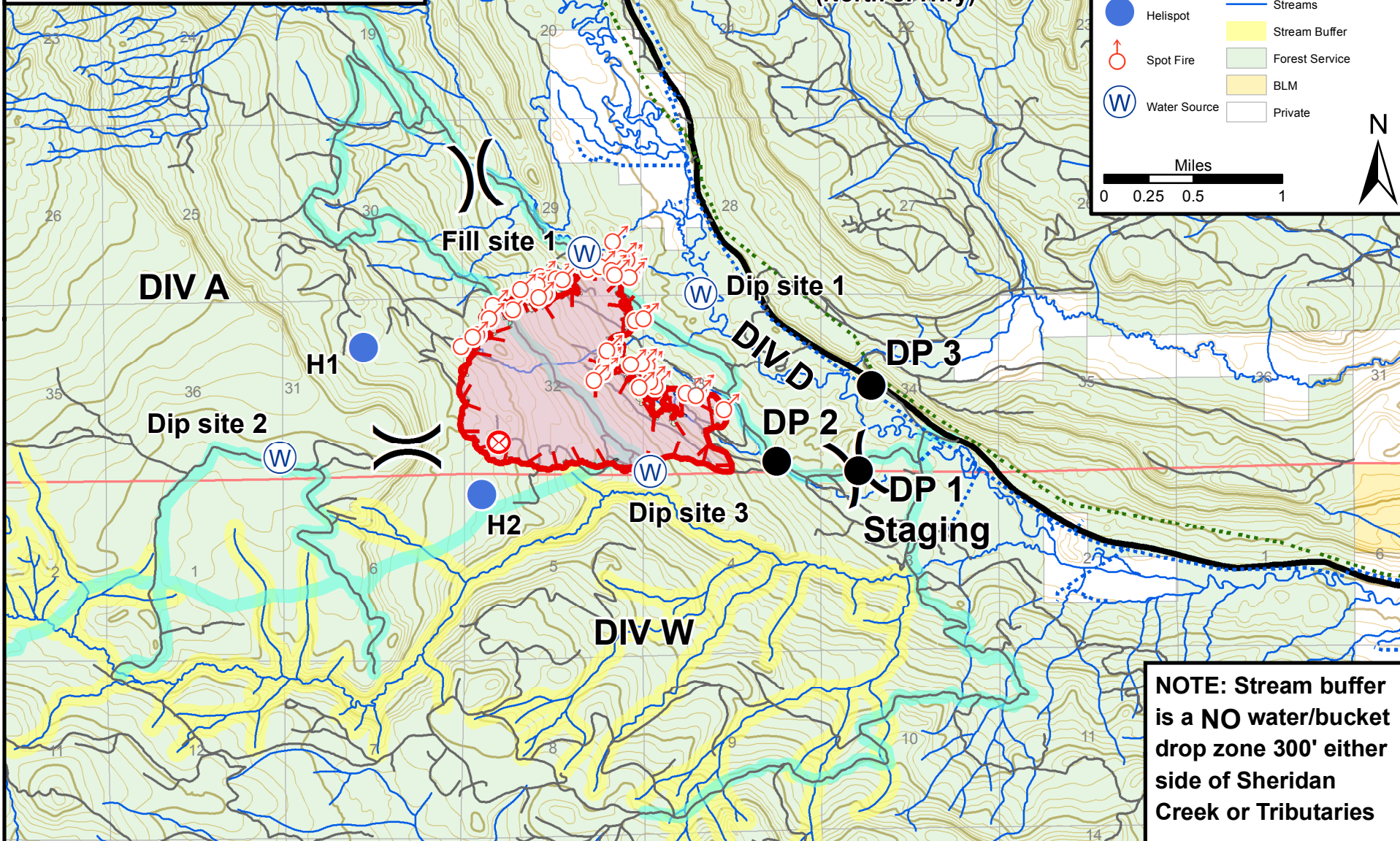
Lava Mtn Fire
WY-SHF-000267

IAP Map

July 21th, 2016

Day Shift

Approx. 875 acres



	Division		Uncontrolled Fire Edge
	Drop Point		Fire Polygon
	Fire Origin		Overhead Powerline
	Helispot		Telephone
	Spot Fire		Highway
	Water Source		Road
			Closed (Road / Trail)
			Streams
			Stream Buffer
			Forest Service
			BLM
			Private

Miles
0 0.25 0.5 1

N

NOTE: Stream buffer is a NO water/bucket drop zone 300' either side of Sheridan Creek or Tributaries