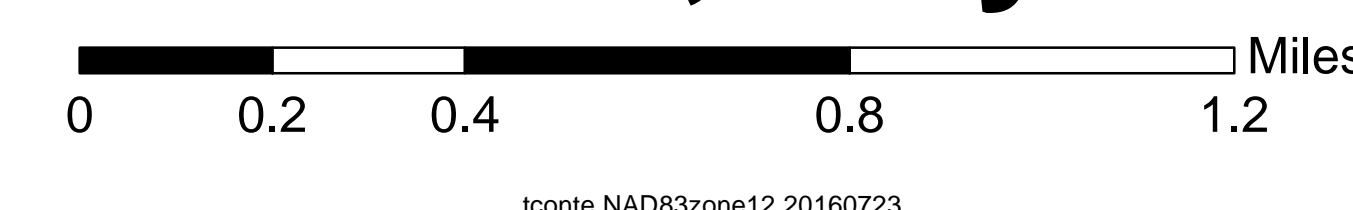




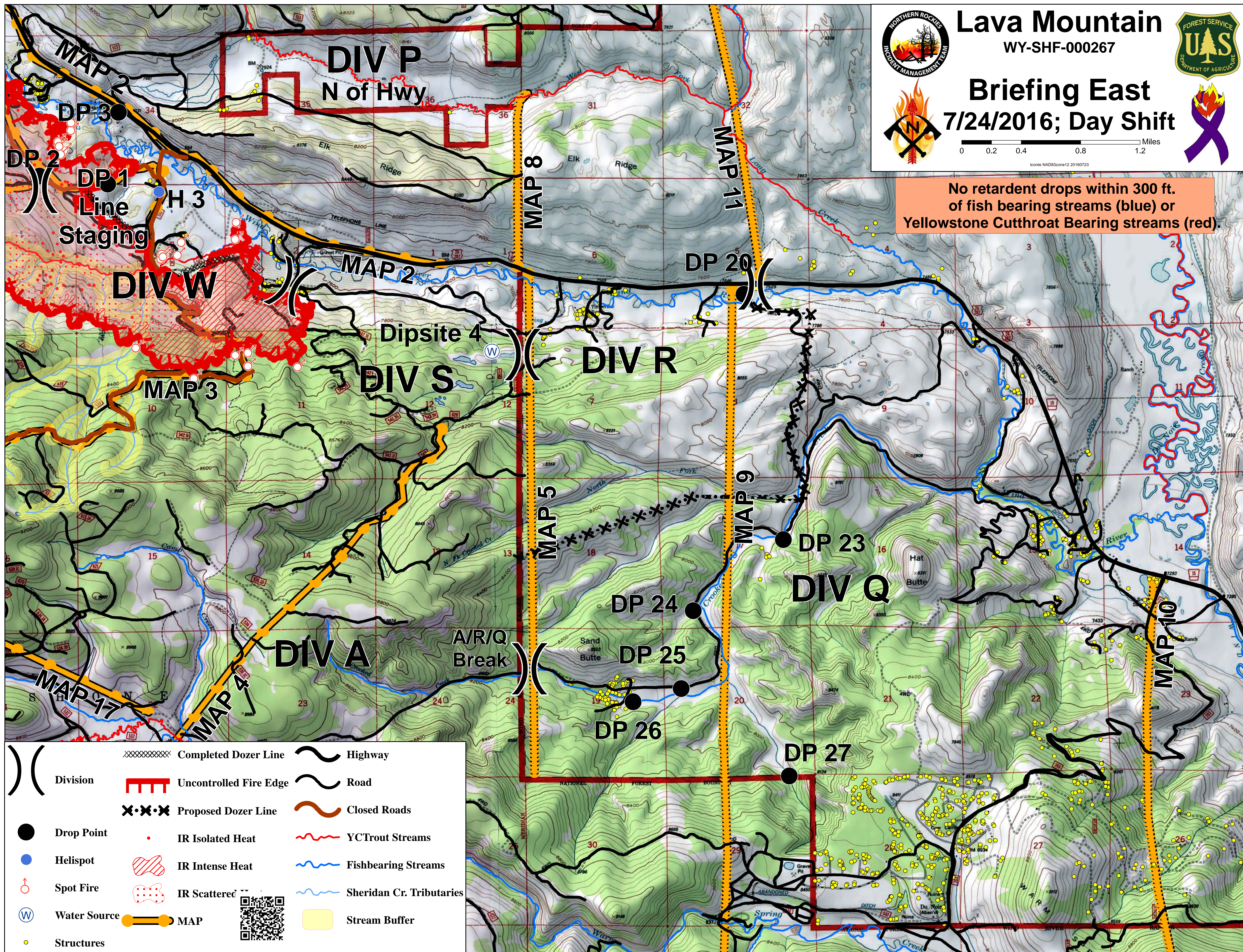
Lava Mountain
WY-SHF-000267



Briefing East
7/24/2016; Day Shift



No retardant drops within 300 ft. of fish bearing streams (blue) or Yellowstone Cutthroat Bearing streams (red).



	Completed Dozer Line		Highway
	Uncontrolled Fire Edge		Road
	Proposed Dozer Line		Closed Roads
	Drop Point		YCTrout Streams
	Helispot		Fishbearing Streams
	Spot Fire		Sheridan Cr. Tributaries
	Water Source		Stream Buffer
	Structures		