



Lava Mountain

WY-SHF-000267



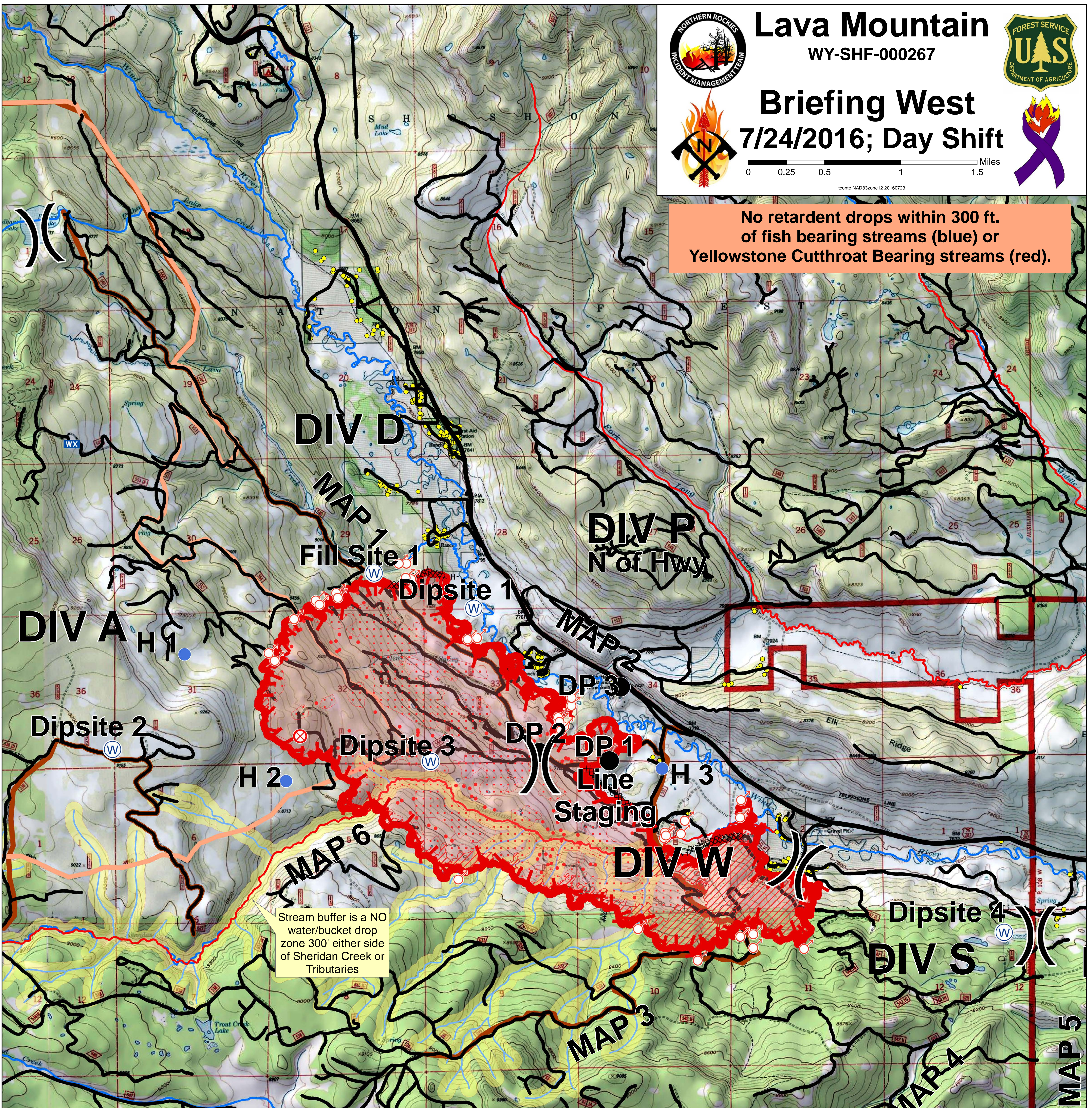
Briefing West 7/24/2016; Day Shift



0 0.25 0.5 1 1.5 Miles

Iconic NAD83zone12 20160723

No retardant drops within 300 ft. of fish bearing streams (blue) or Yellowstone Cutthroat Bearing streams (red).



Stream buffer is a NO water/bucket drop zone 300' either side of Sheridan Creek or Tributaries

	Division		Completed Dozer Line		YCT Conservation
	Drop Point		Uncontrolled Fire Edge		Fishbearing Streams
	Fire Origin		Hand Line		Sheridan Cr. Tributaries
	Helispot		Proposed Dozer Line		Stream Buffer
	Mobile Weather Unit		IR Isolated Heat		Highway
	Spot Fire		IR Intense Heat		Road
	Water Source		IR Scattered Heat		Closed Trails
	Structures				Closed Roads

