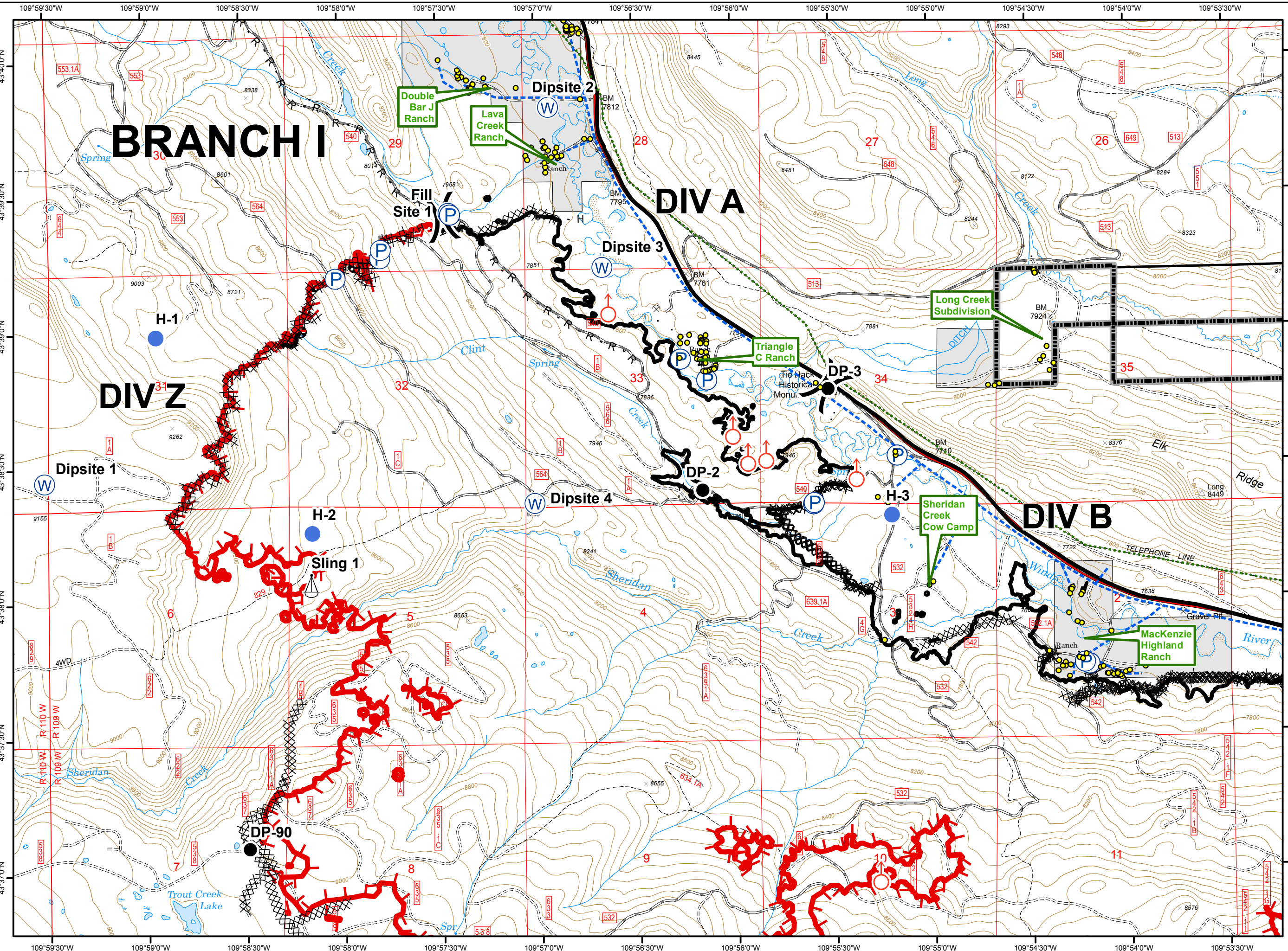
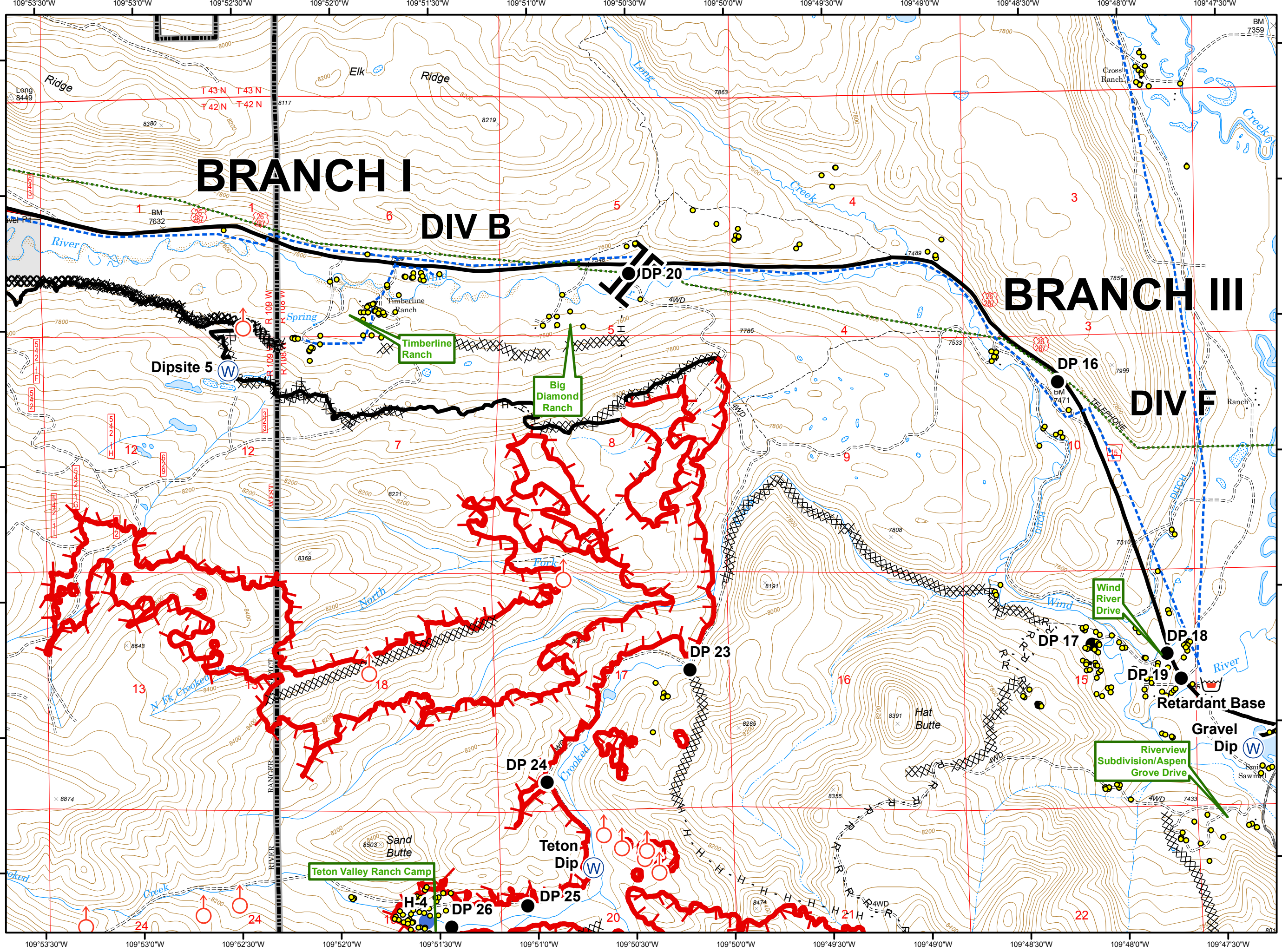
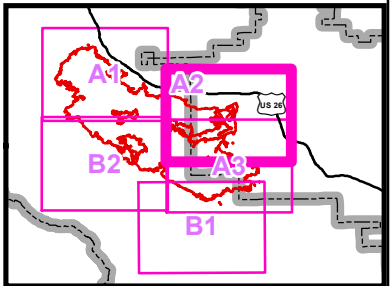


### Legend

- Structure
- Drop Point
- Helispot
- Pump
- Sling Site
- Spot Fire
- Water Source
- Division Break
- Uncontrolled Fire Edge
- Completed Line
- R - R Road as Completed Line
- Completed Dozer Line
- H - H Hand Line
- Other
- Overhead Powerline
- Telephone
- Highway
- Forest Boundary

0 0.25 0.5 Miles

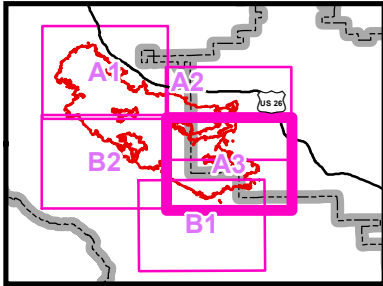




**Legend**

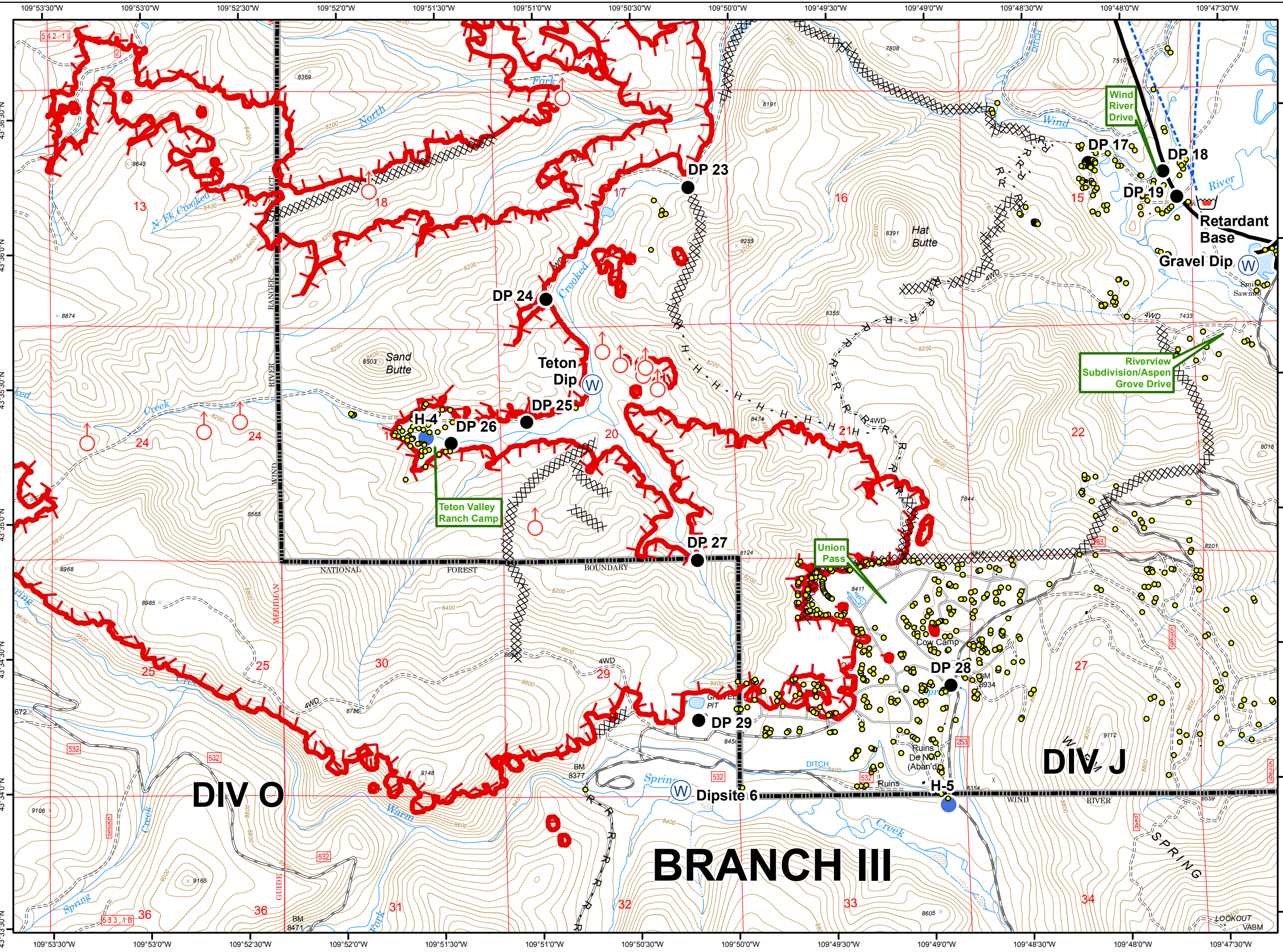
- Structure
- Drop Point
- Helispot
- Retardant/Mud Pit
- Spot Fire
- Water Source
- Division Break
- Branch Break
- Uncontrolled Fire Edge
- Completed Line
- R - R Road as Completed Line
- Completed Dozer Line
- H - H Hand Line
- Overhead Powerline
- Telephone
- Highway
- Forest Boundary

0 0.25 0.5 Miles



Legend

- Structure
- Drop Point
- Helispot
- Retardant/Mud Pit
- Spot Fire
- Water Source
- Division Break
- Uncontrolled Fire Edge
- R - R Road as Completed Line
- Completed Dozer Line
- H - H Hand Line
- Overhead Powerline
- Telephone
- Highway
- Forest Boundary



DIV O

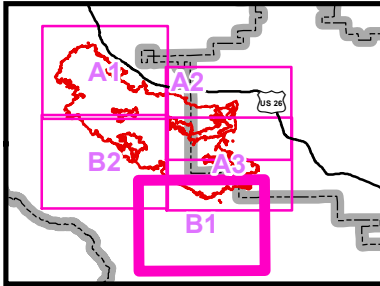
BRANCH III

DIV J

# Lava Mountain WY-SHF-000267

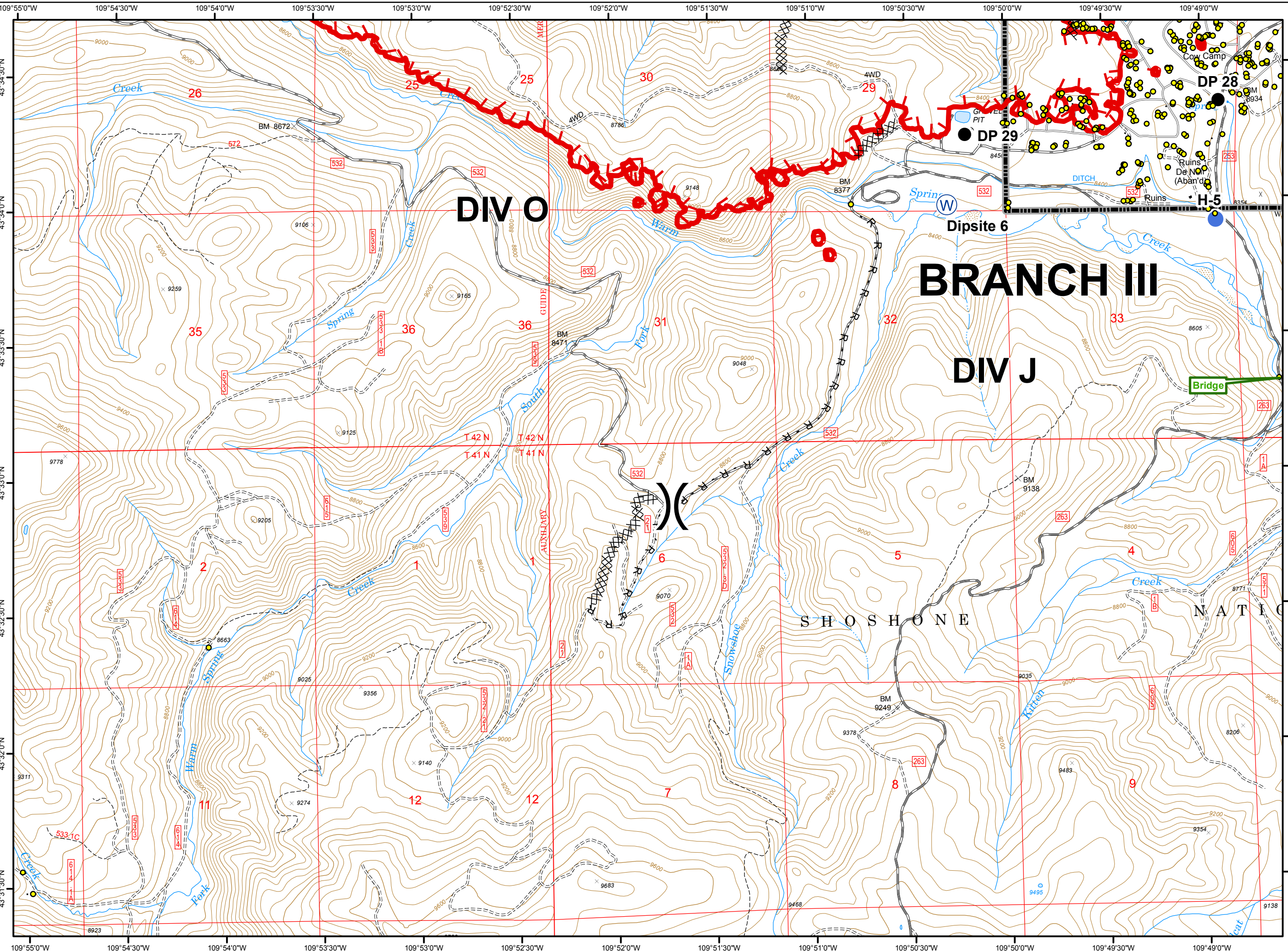
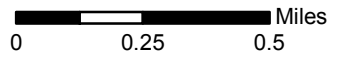
## B1

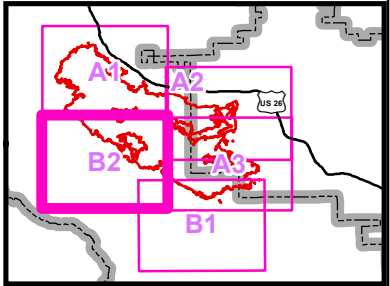
Page 4 of 5  
07/31/2016  
Day



### Legend

- Structure
- Drop Point
- Helispot
- Water Source
- Division Break
- Uncontrolled Fire Edge
- Road as Completed Line
- Completed Dozer Line
- Overhead Powerline
- Telephone
- Forest Boundary





Legend

- Structure
- Drop Point
- Helispot
- Spot Fire
- Branch Break
- Uncontrolled Fire Edge
- Completed Dozer Line
- Overhead Powerline
- Telephone
- Forest Boundary

