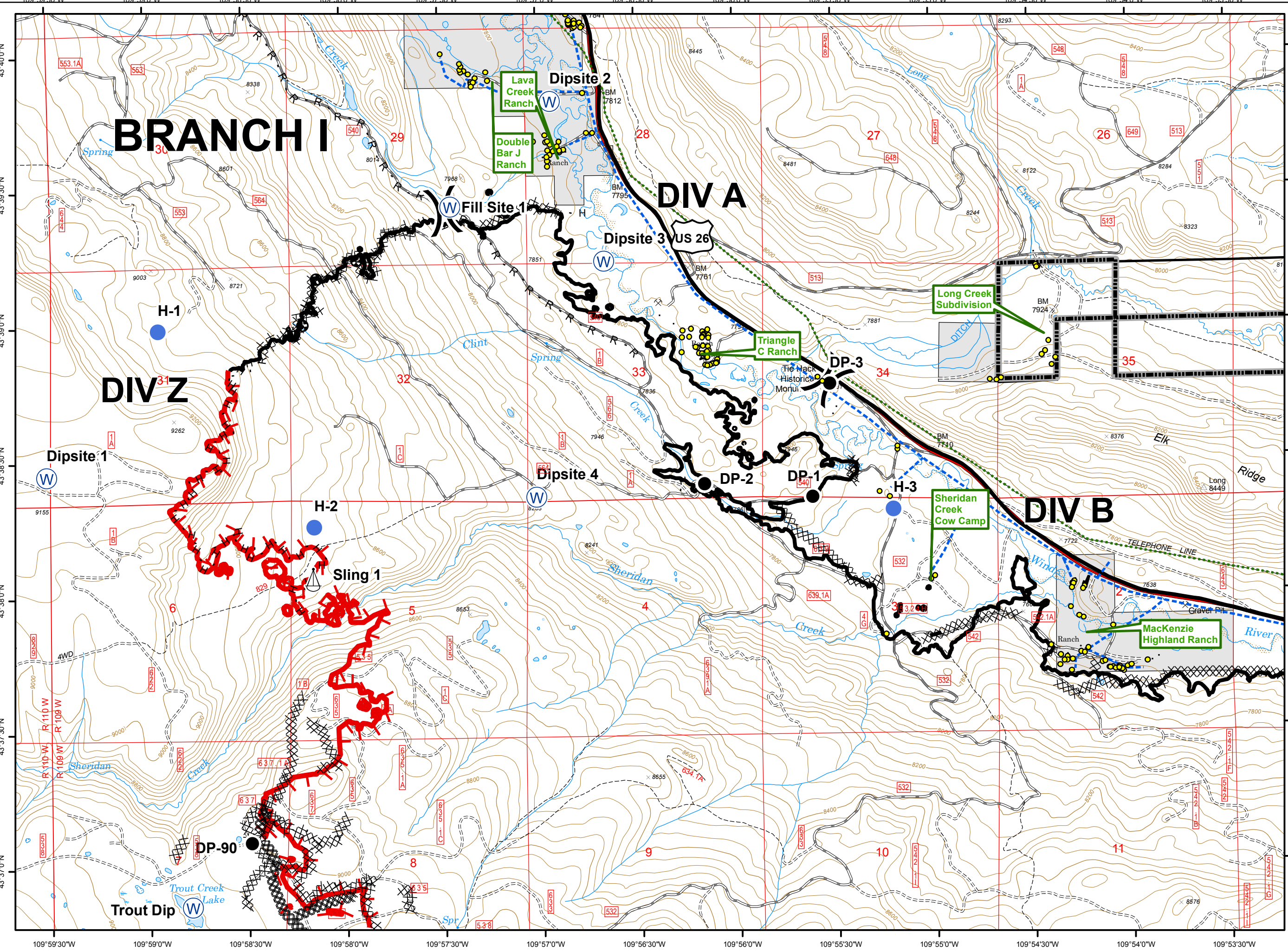
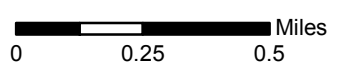
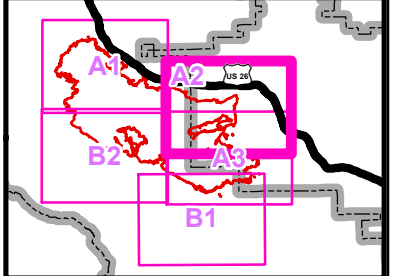


Legend

- Structure
- Drop Point
- Helispot
- Sling Site
- Water Source
- Division Break
- Uncontrolled Fire Edge
- Completed Line
- R - R Road as Completed Line
- Completed Dozer Line
- H - H Hand Line
- Other
- Overhead Powerline
- Telephone
- Highway
- Forest Boundary



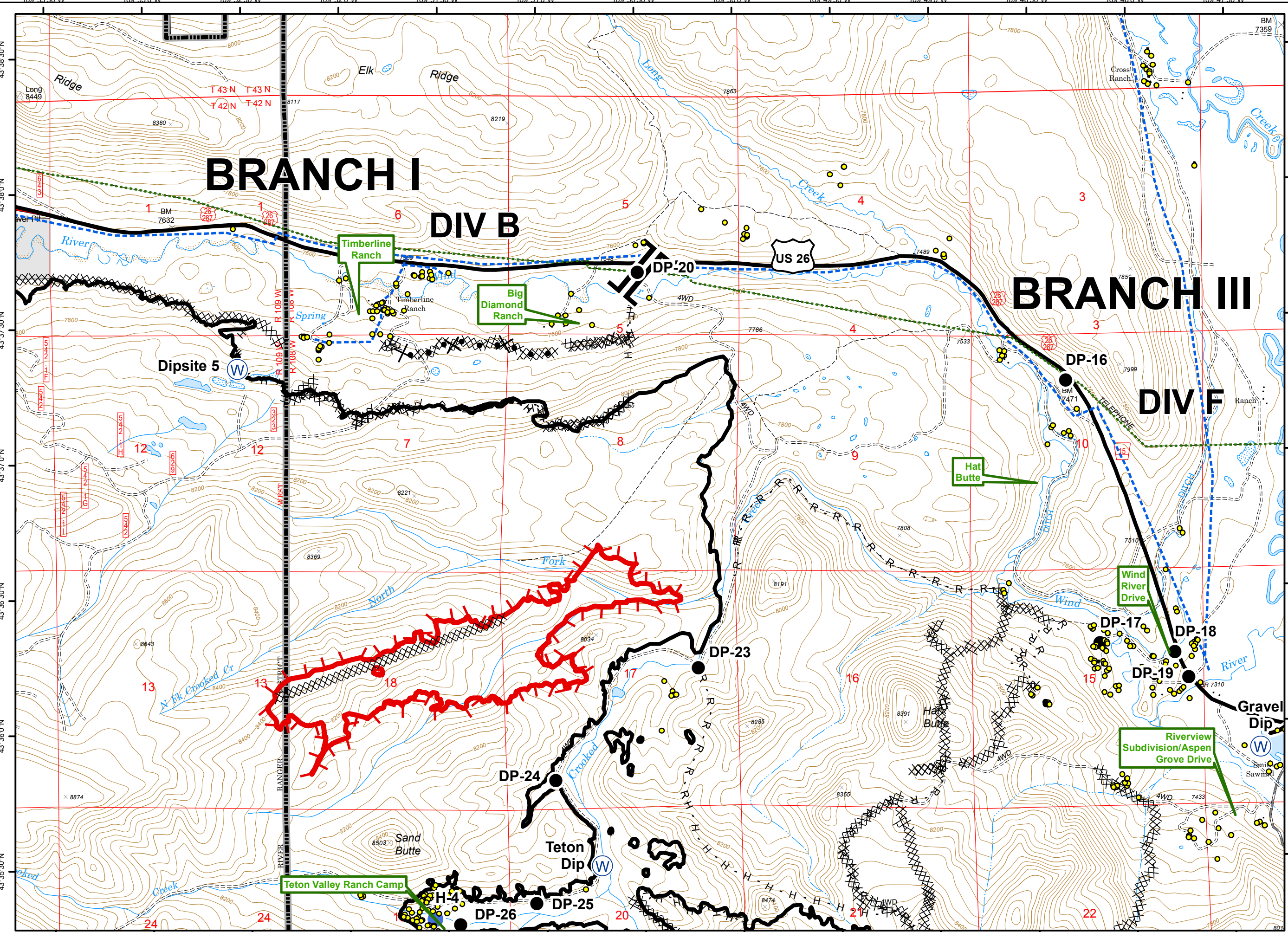


BRANCH I

DIV B

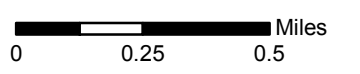
BRANCH III

DIV F



Legend

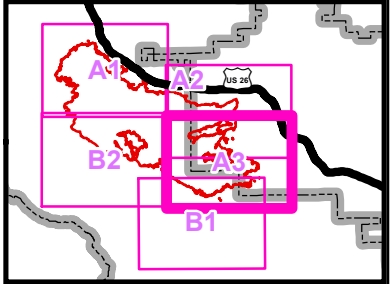
- Structure
- Drop Point
- Helispot
- Water Source
- Division Break
- Branch Break
- Uncontrolled Fire Edge
- Completed Line
- R - R Road as Completed Line
- Completed Dozer Line
- H - H Hand Line
- Proposed Dozer Line
- Overhead Powerline
- Telephone
- Highway
- Forest Boundary



Lava Mountain WY-SHF-000267

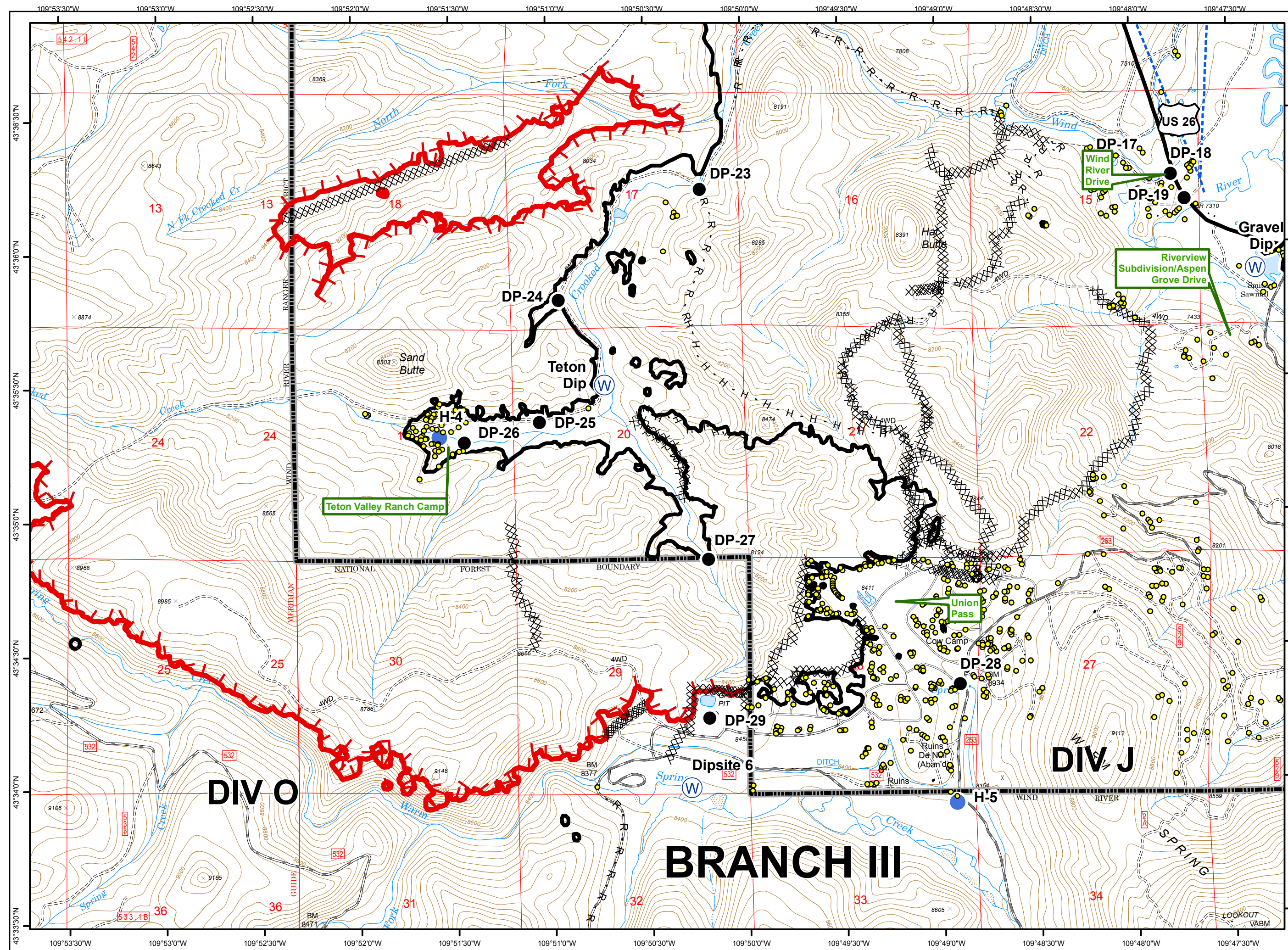
A3

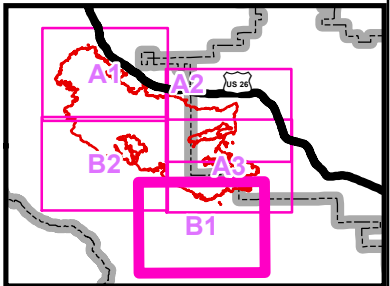
Page 3 of 5
08/02/2016
Day



Legend

- Structure
- Drop Point
- Helispot
- ⊕ Water Source
- ⌋ Division Break
- ┌ Uncontrolled Fire Edge
- Completed Line
- R - R Road as Completed Line
- XXXXX Completed Dozer Line
- H - H Hand Line
- ⊕ Other
- Overhead Powerline
- ⋯ Telephone
- Highway
- ▭ Forest Boundary

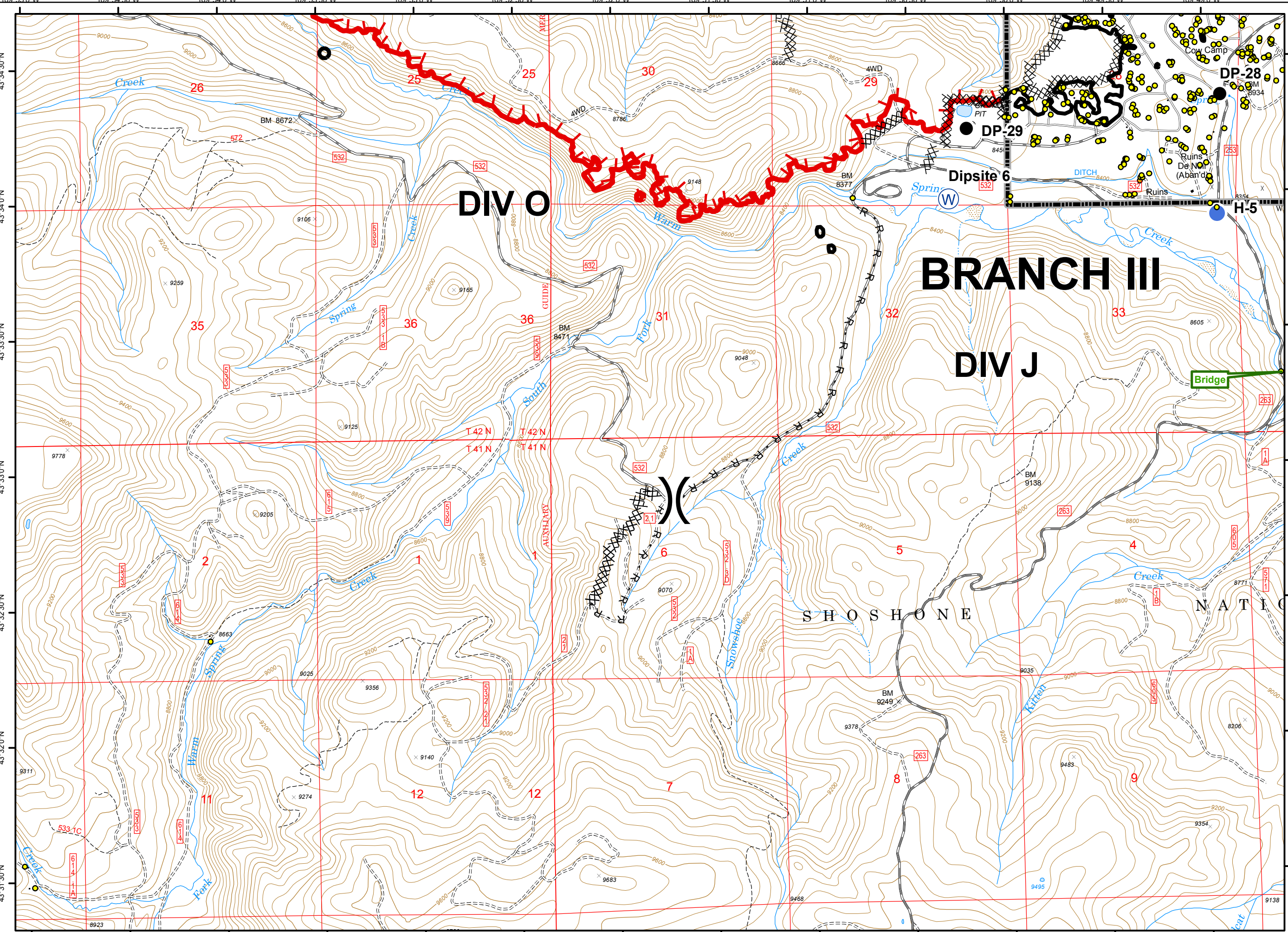


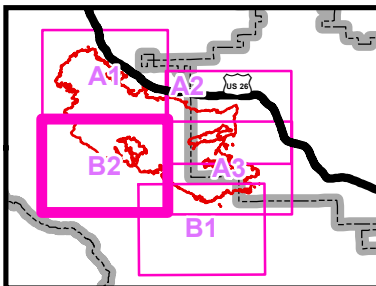


Legend

- Structure
- Drop Point
- Helispot
- Water Source
- Division Break
- Uncontrolled Fire Edge
- Completed Line
- R - R Road as Completed Line
- Completed Dozer Line
- Overhead Powerline
- Telephone
- Forest Boundary

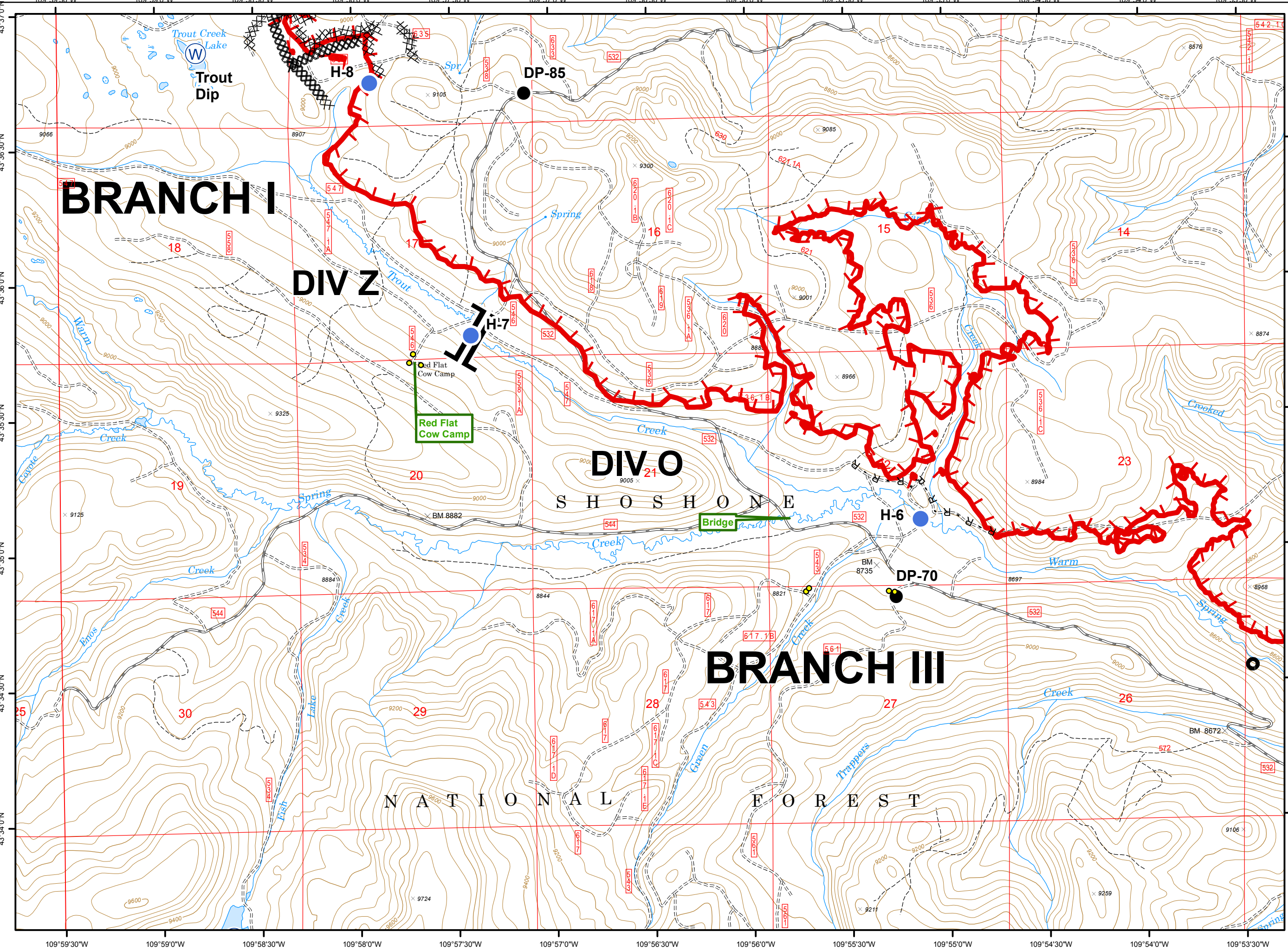
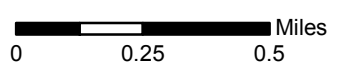
0 0.25 0.5 Miles





Legend

- Structure
- Drop Point
- Helispot
- Ⓜ Water Source
- || Branch Break
- ┌ Uncontrolled Fire Edge
- Completed Line
- R - R Road as Completed Line
- XXXXX Completed Dozer Line
- Overhead Powerline
- ... Telephone
- ▭ Forest Boundary



BRANCH I

DIV Z

DIV O

SHOSHONE

BRANCH III

NATIONAL FOREST