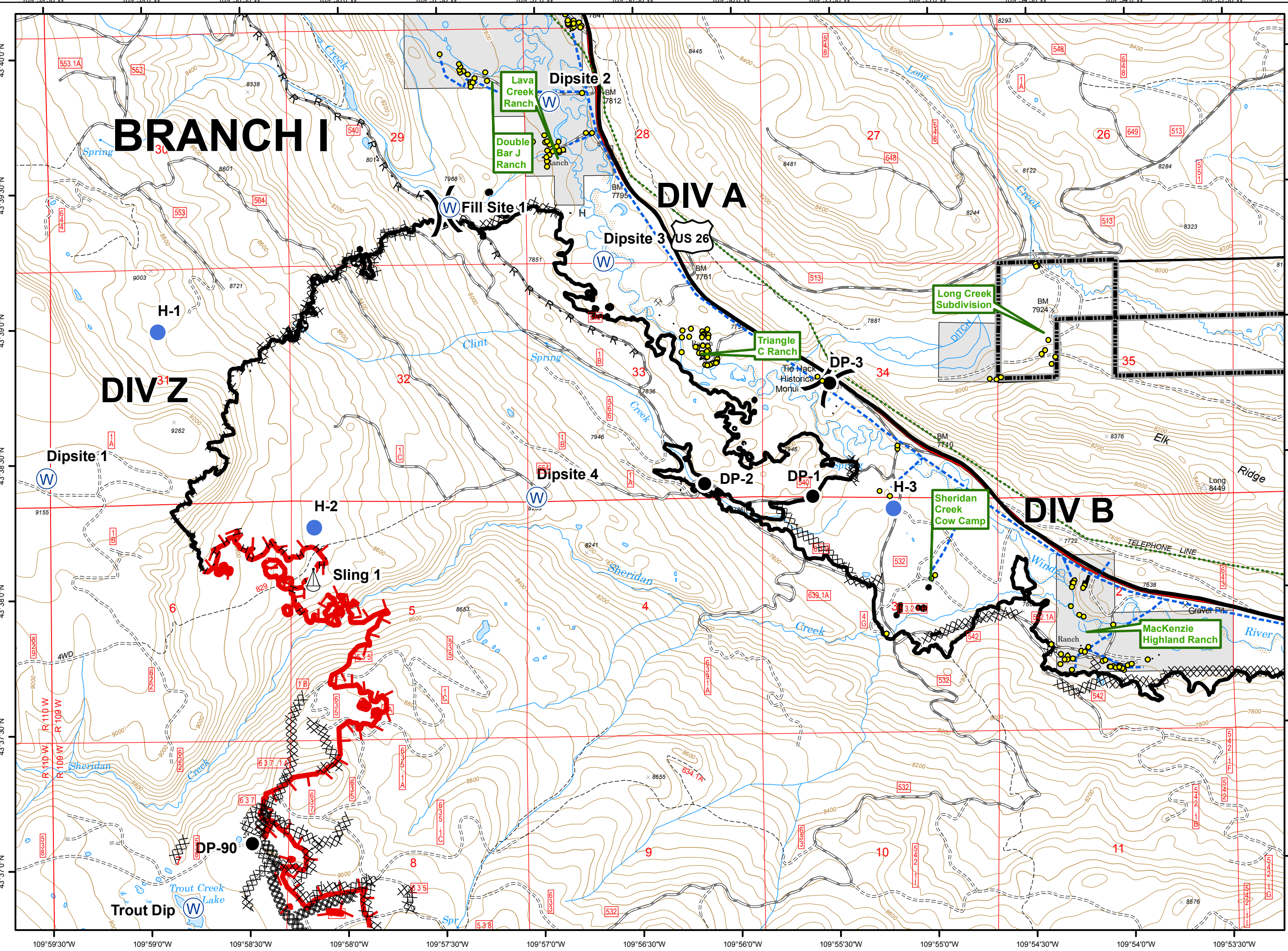
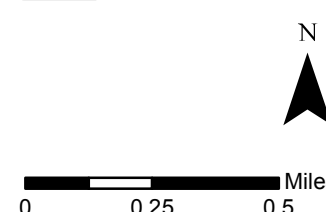
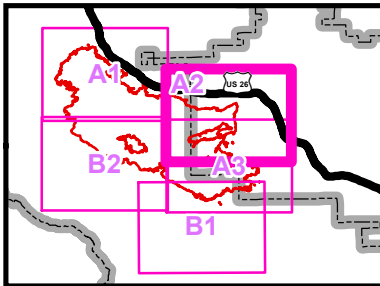


Legend

- Structure
- Drop Point
- Helispot
- Sling Site
- Water Source
- Division Break
- Uncontrolled Fire Edge
- Completed Line
- R - R Road as Completed Line
- Completed Dozer Line
- H - H Hand Line
- Other
- Overhead Powerline
- Telephone
- Highway
- Forest Boundary





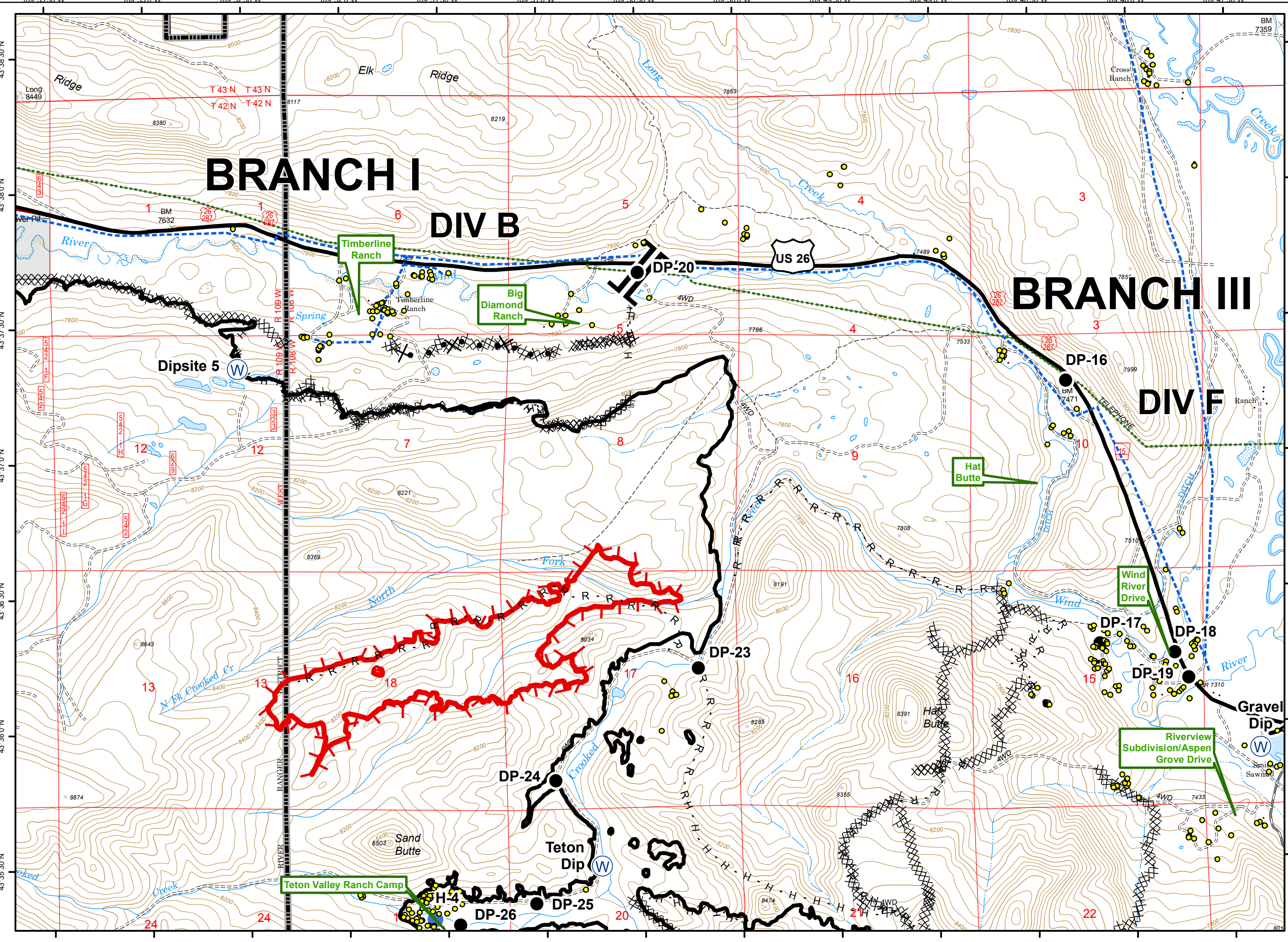


# BRANCH I

## DIV B

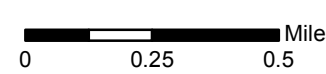
# BRANCH III

## DIV F



### Legend

- Structure
- Drop Point
- Helispot
- ⊕ Water Source
- ) Division Break
- || Branch Break
- ┌ Uncontrolled Fire Edge
- Completed Line
- R - R Road as Completed Line
- ⊗ Completed Dozer Line
- H - H Hand Line
- ⊗ Proposed Dozer Line
- Overhead Powerline
- ⋯ Telephone
- Highway
- ▭ Forest Boundary

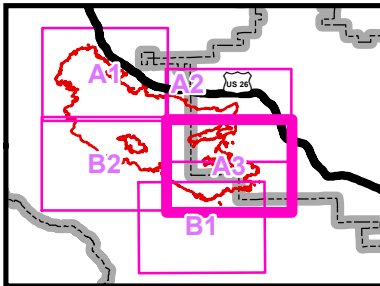




# Lava Mountain WY-SHF-000267

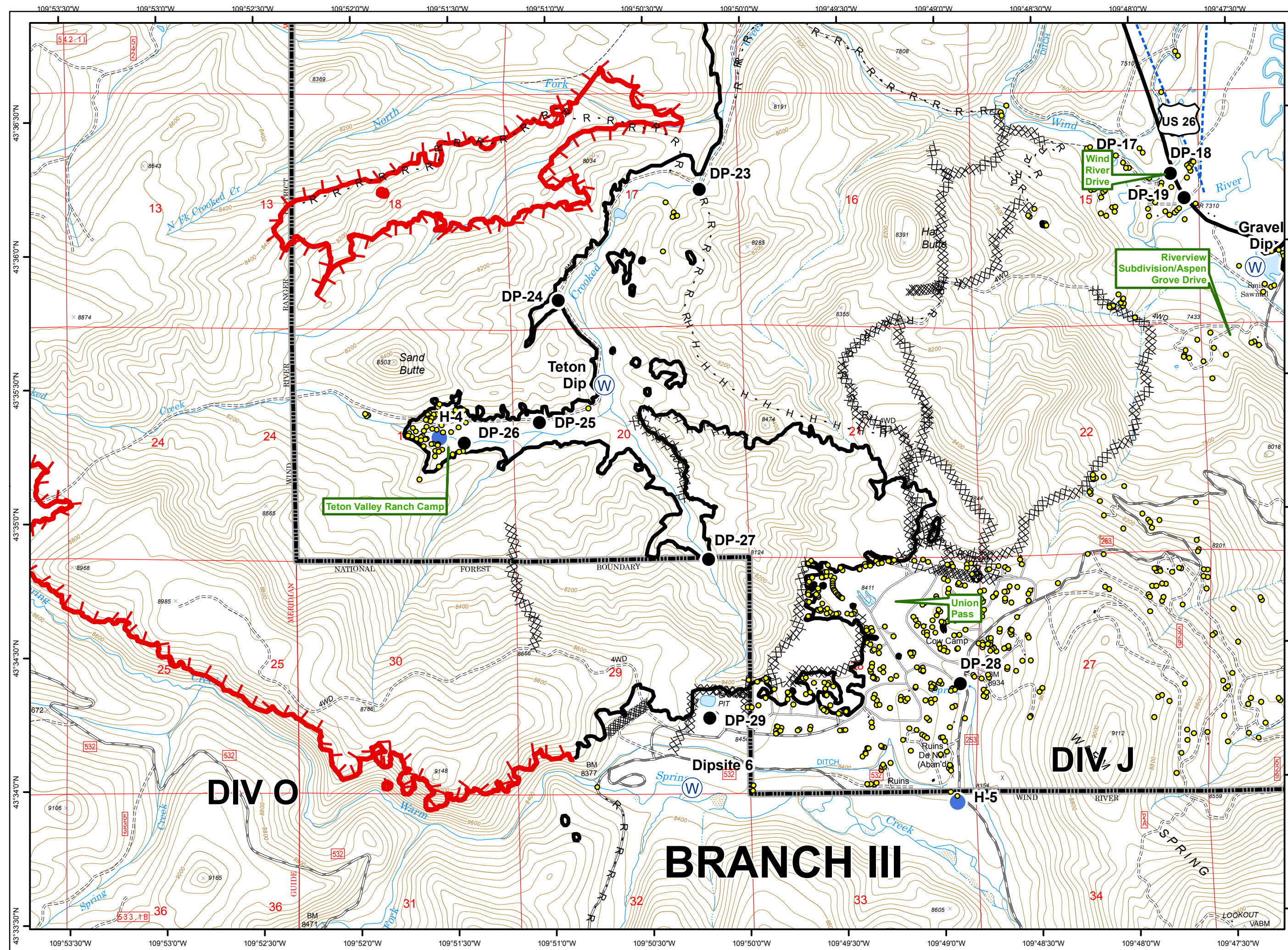
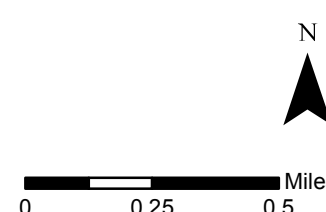
## A3

Page 3 of 5  
08/03/2016  
Day

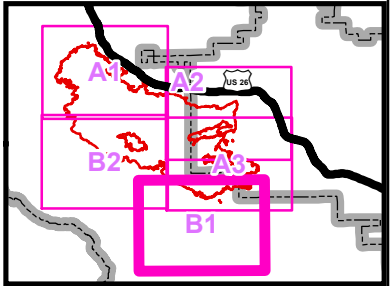


### Legend

- Structure
- Drop Point
- Helispot
- ⊕ Water Source
- ⌋ Division Break
- ┌ Uncontrolled Fire Edge
- Completed Line
- R - R Road as Completed Line
- XXXXX Completed Dozer Line
- H - H Hand Line
- ⊕ Other
- Overhead Powerline
- ⋯ Telephone
- Highway
- ▭ Forest Boundary



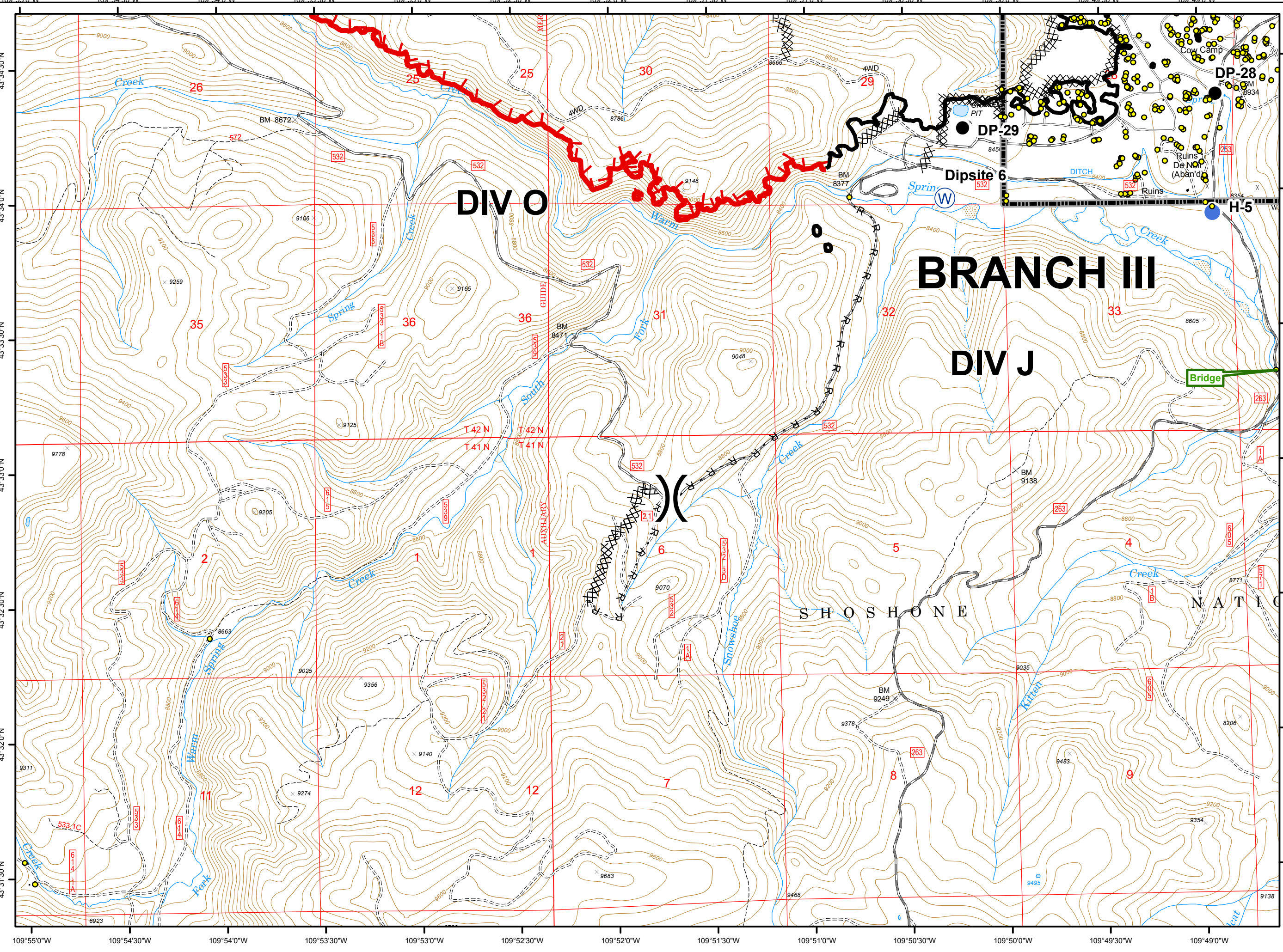




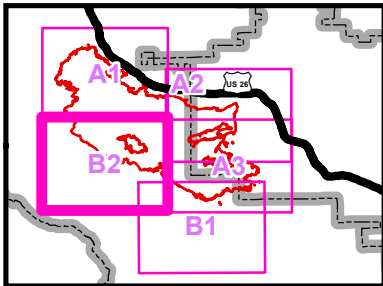
**Legend**

- Structure
- Drop Point
- Helispot
- Water Source
- Division Break
- Uncontrolled Fire Edge
- Completed Line
- Road as Completed Line
- Completed Dozer Line
- Overhead Powerline
- Telephone
- Forest Boundary

0 0.25 0.5 Miles







Legend

- Structure
- Drop Point
- Helispot
- Water Source
- Branch Break
- Uncontrolled Fire Edge
- Completed Line
- R - R Road as Completed Line
- Completed Dozer Line
- Overhead Powerline
- Telephone
- Forest Boundary

