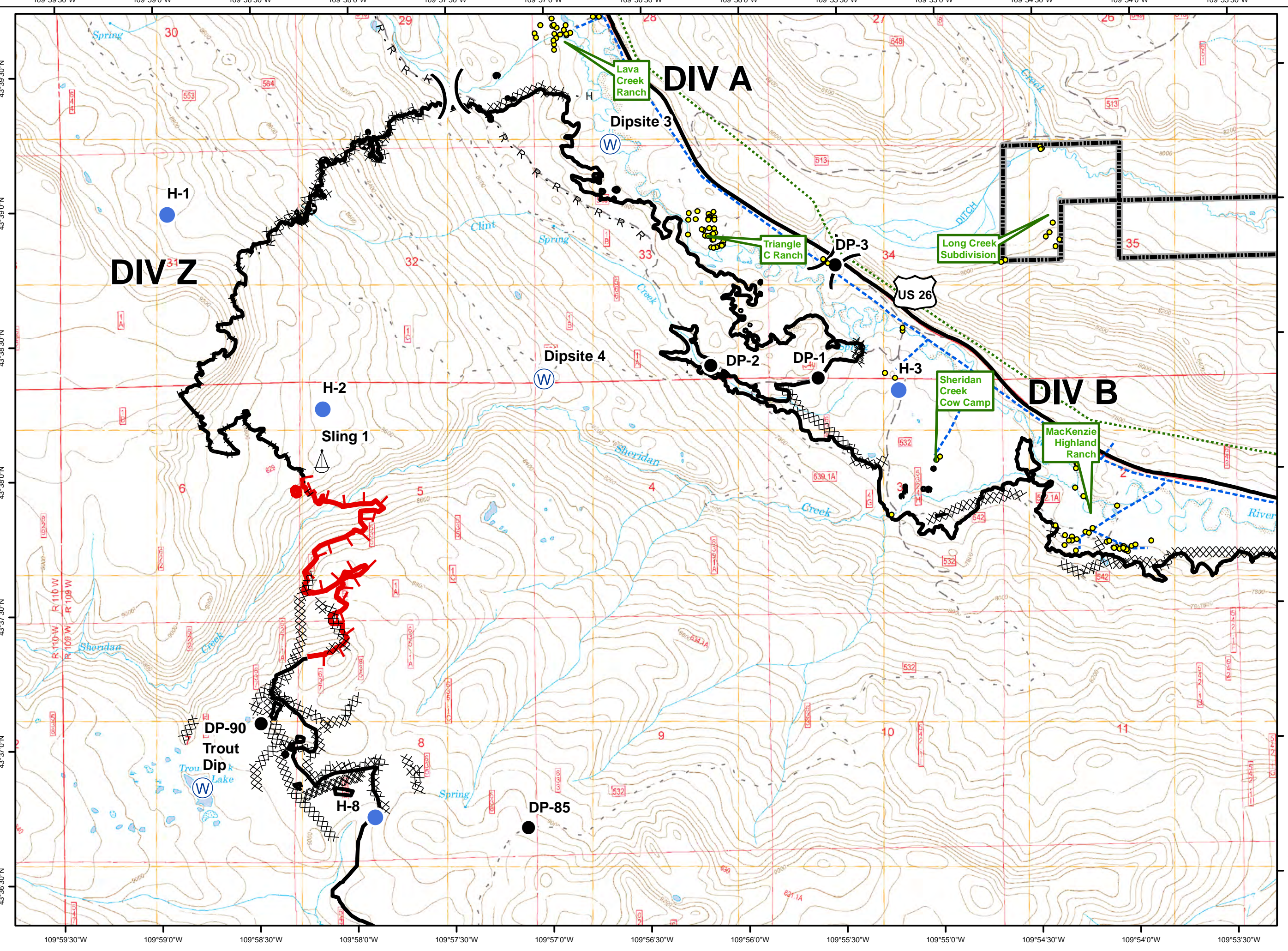


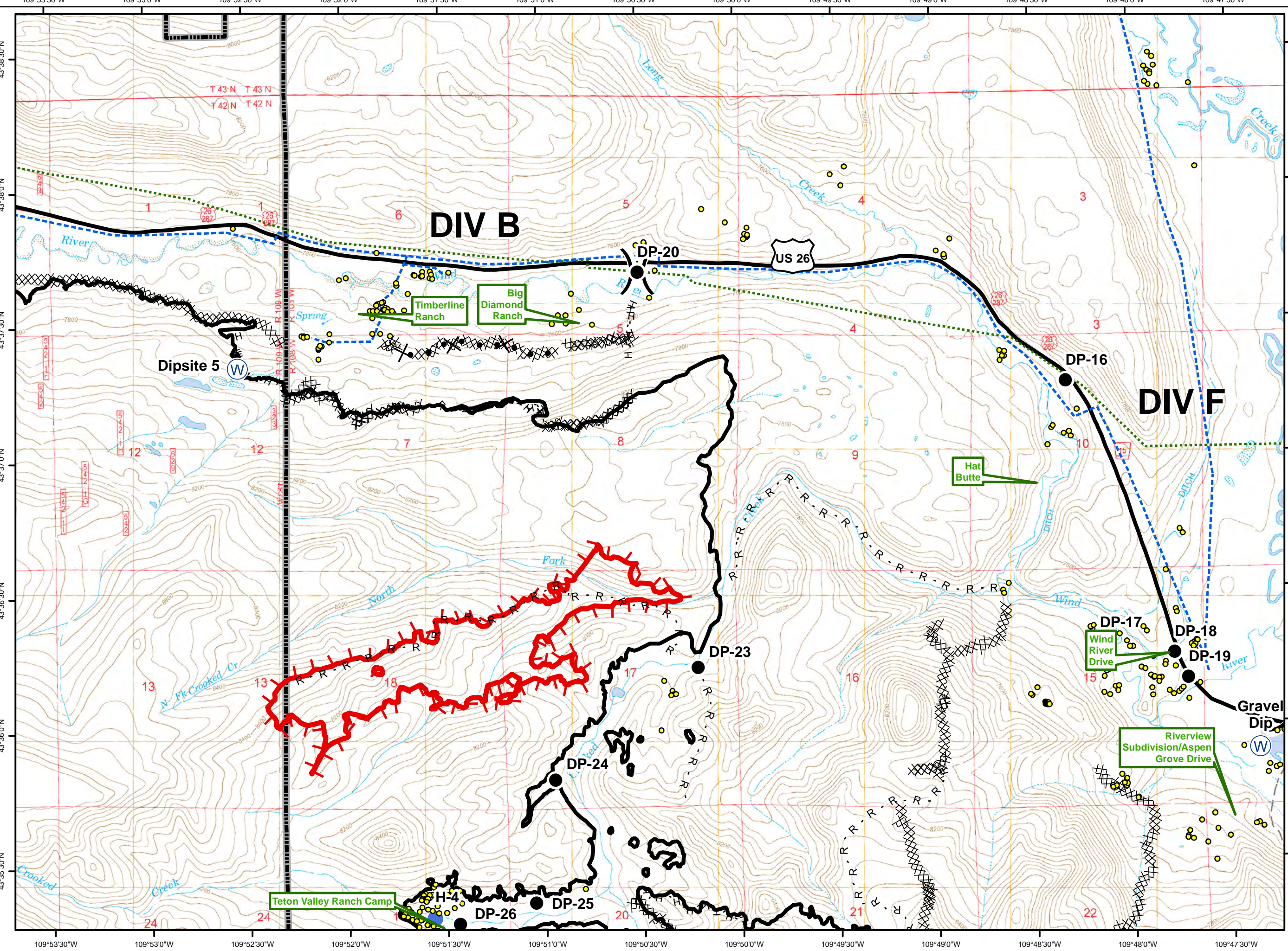
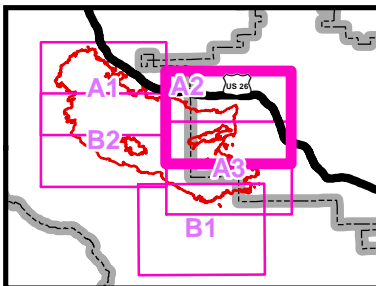
**Legend**

- Structure
- Drop Point
- Helispot
- Sling Site
- Water Source
- Division Break
- Uncontrolled Fire Edge
- Completed Line
- R - R Road as Completed Line
- Completed Dozer Line
- H - H Hand Line
- Other
- Overhead Powerline
- Telephone
- Highway
- Forest Boundary

N  
  
 0 0.25 0.5 Miles







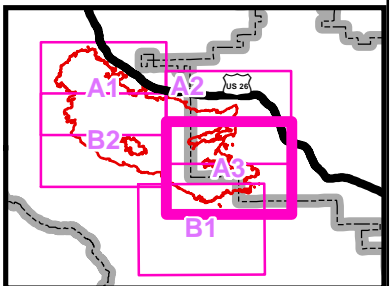
**Legend**

- Structure
- Drop Point
- Helispot
- Water Source
- Division Break
- Uncontrolled Fire Edge
- Completed Line
- R - R Road as Completed Line
- Completed Dozer Line
- H - H Hand Line
- Proposed Dozer Line
- Overhead Powerline
- Telephone
- Highway
- Forest Boundary

N

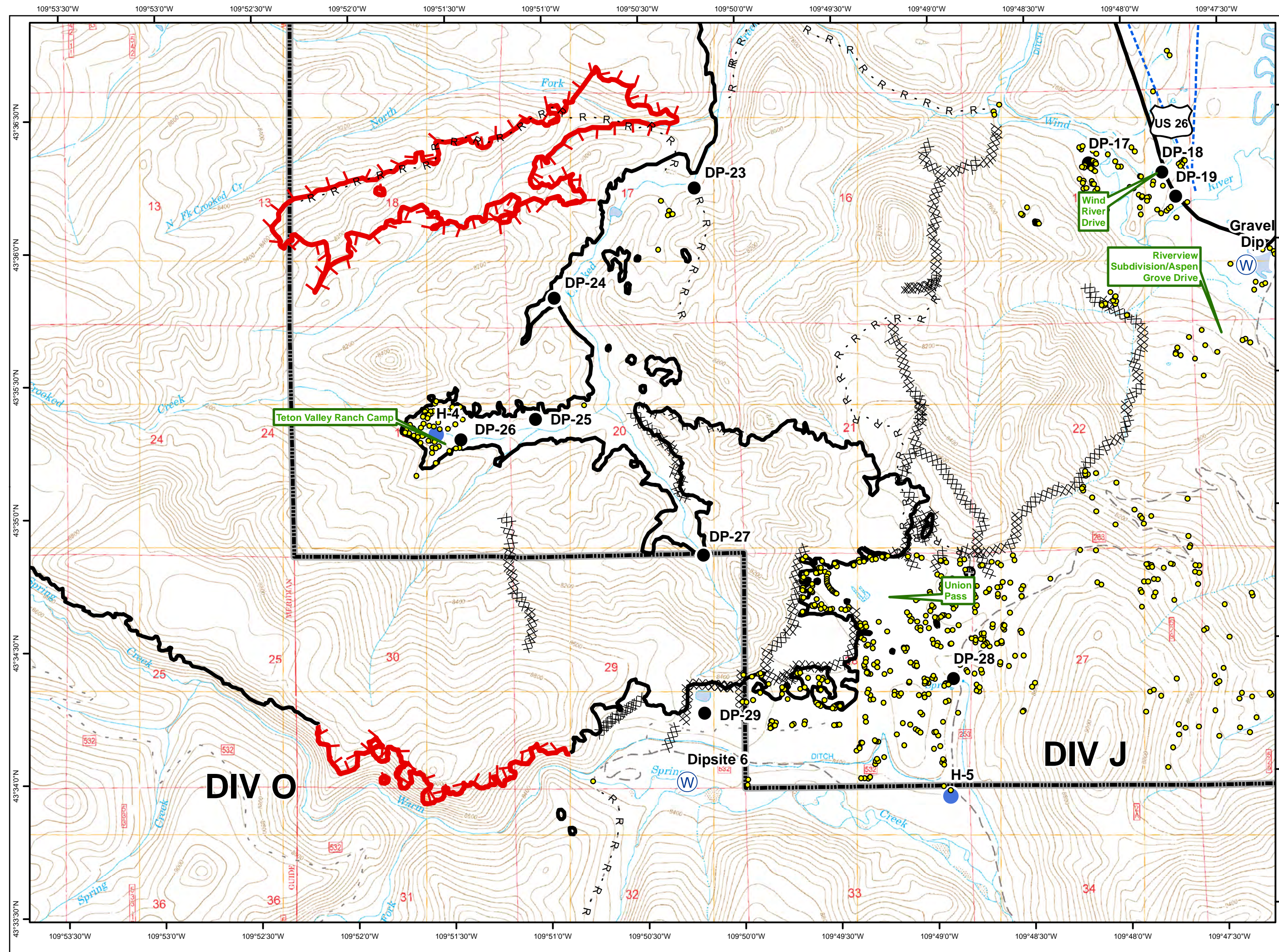
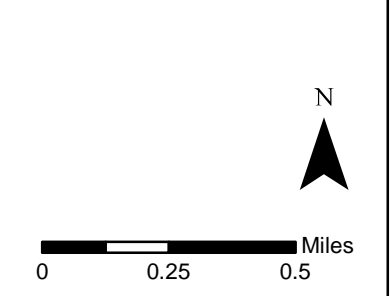
0 0.25 0.5 Miles





**Legend**

- Structure
- Drop Point
- Helispot
- W Water Source
- ) ( Division Break
- ┌ Uncontrolled Fire Edge
- Completed Line
- R - R Road as Completed Line
- Completed Dozer Line
- H - H Hand Line
- Other
- Overhead Powerline
- Telephone
- Highway
- Forest Boundary



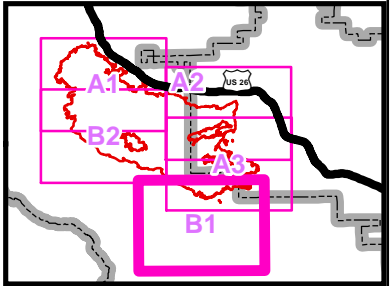


# Lava Mountain

## WY-SHF-000267

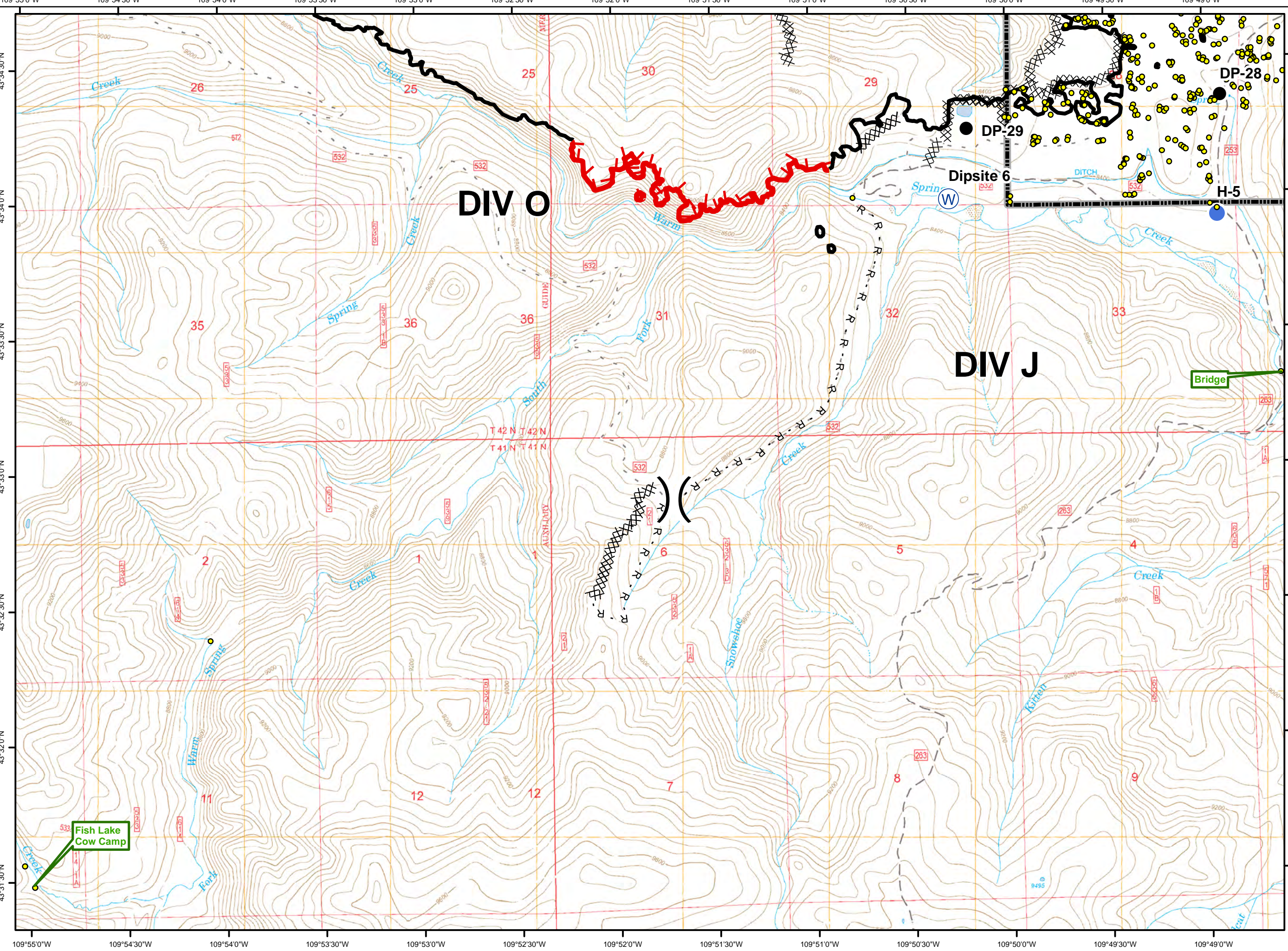
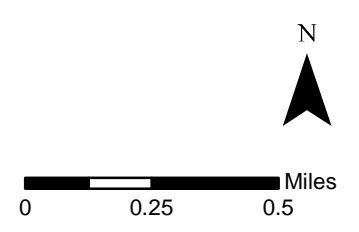
### B1

Page 4 of 5  
08/07/2016

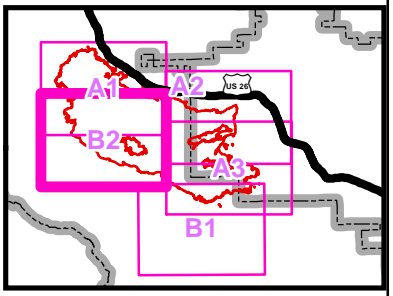


### Legend

- Structure
- Drop Point
- Helispot
- Water Source
- Division Break
- Uncontrolled Fire Edge
- Completed Line
- Road as Completed Line
- Completed Dozer Line
- Overhead Powerline
- Telephone
- Forest Boundary







**Legend**

- Structure
- Drop Point
- Helispot
- Water Source
- Division Break
- Uncontrolled Fire Edge
- Completed Line
- Road as Completed Line
- Completed Dozer Line
- Hand Line
- Overhead Powerline
- Telephone
- Forest Boundary

N  
 0 0.25 0.5 Miles

