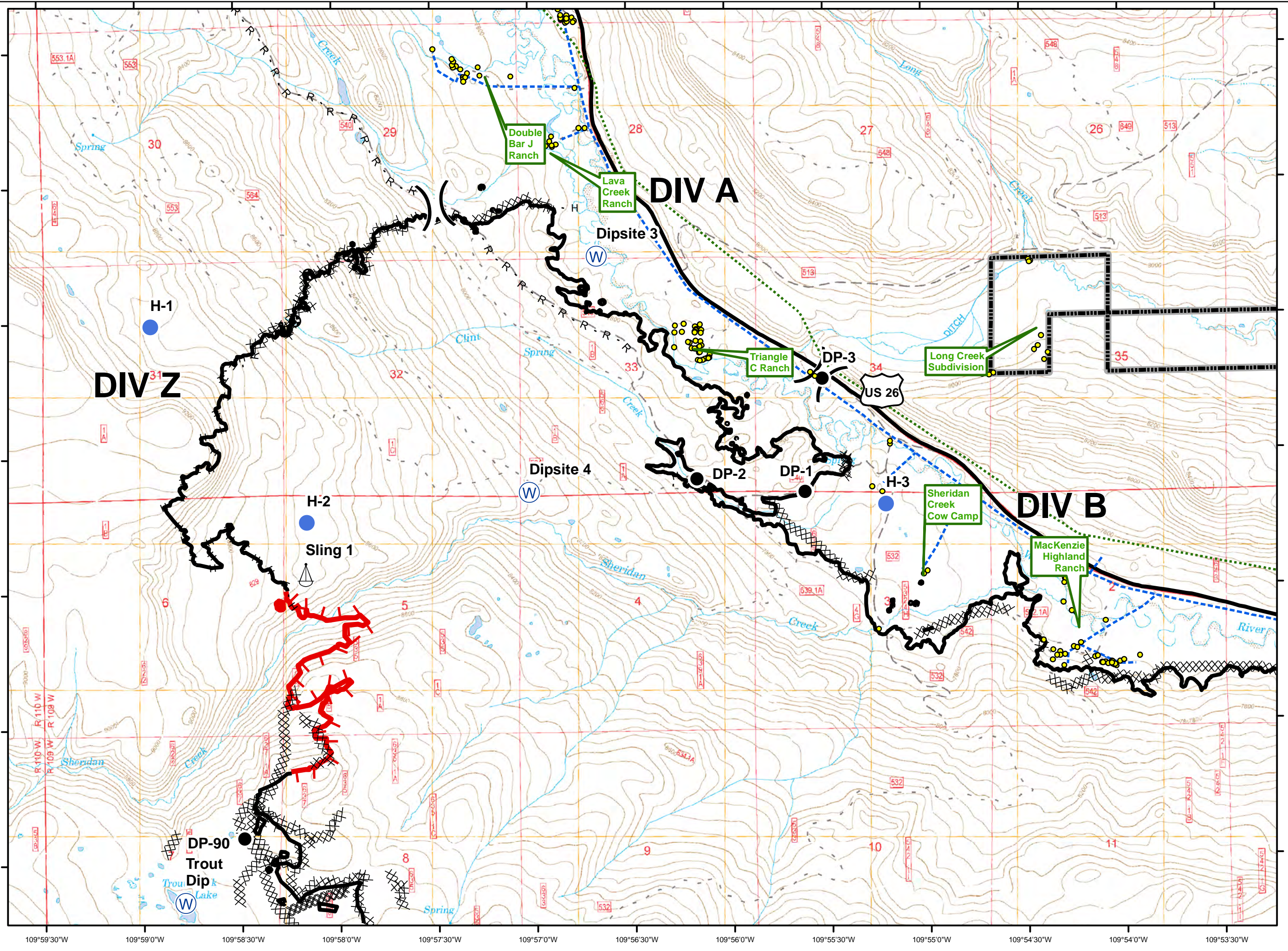


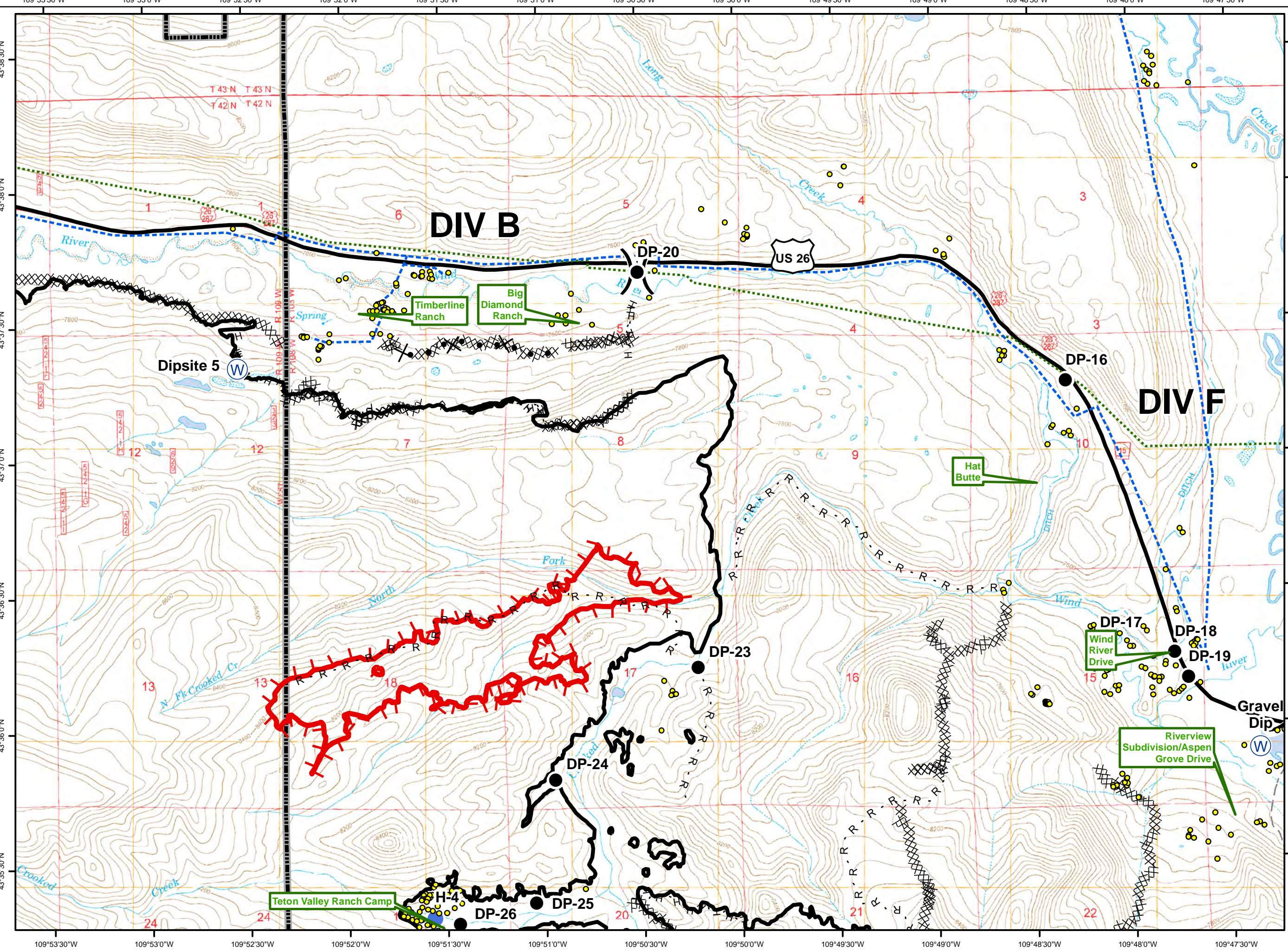
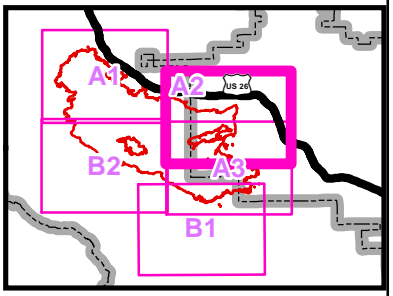
Legend

- Structure
- Drop Point
- Helispot
- Sling Site
- Water Source
- Division Break
- Uncontrolled Fire Edge
- Completed Line
- R - R Road as Completed Line
- Completed Dozer Line
- H - H Hand Line
- Other
- Overhead Powerline
- Telephone
- Highway
- Forest Boundary

N

 0 0.25 0.5 Miles



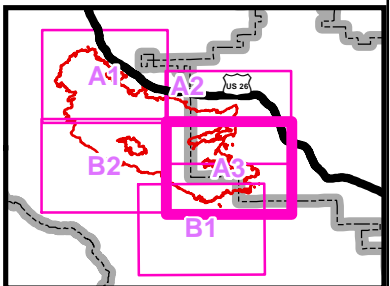


Legend

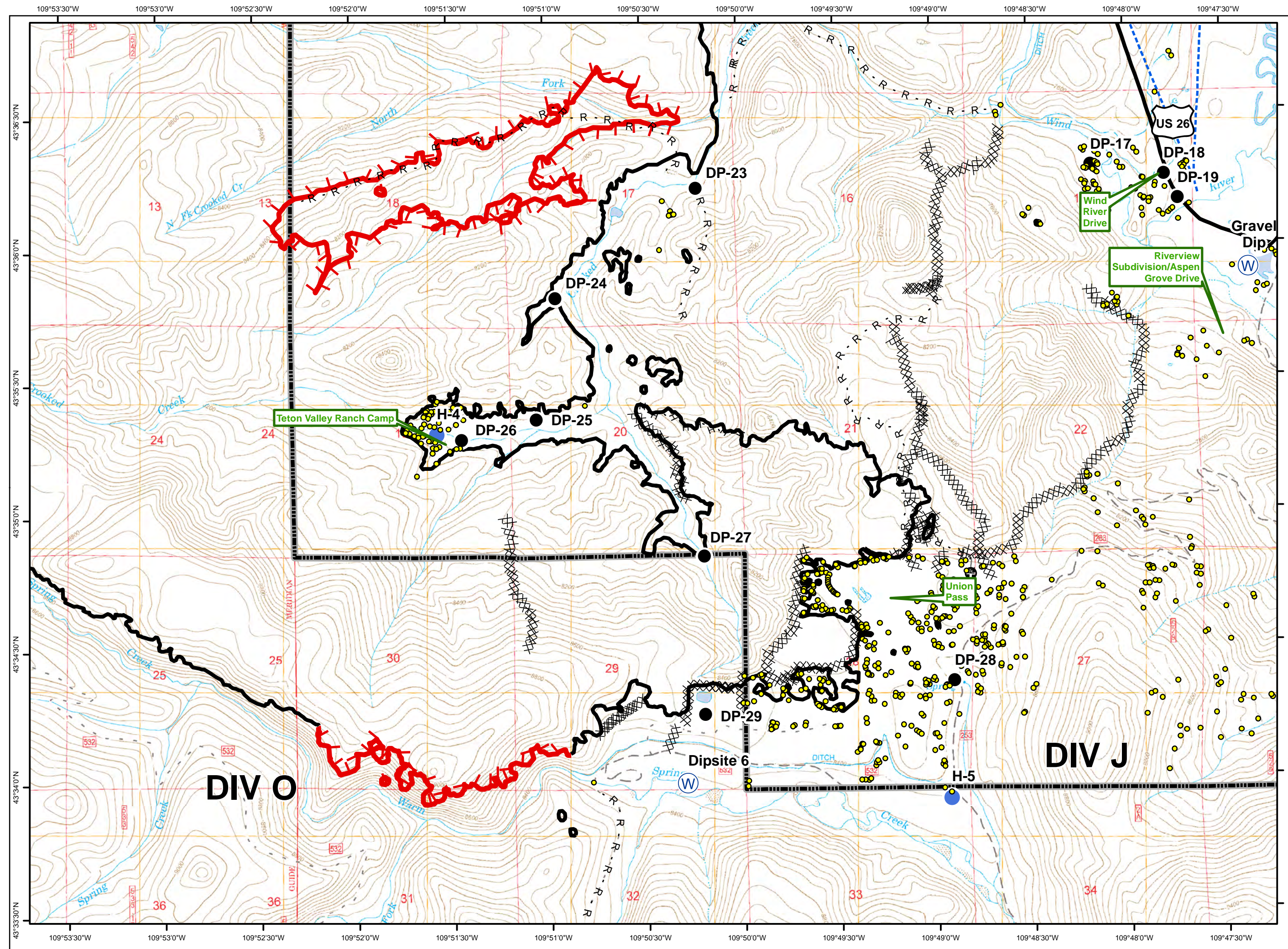
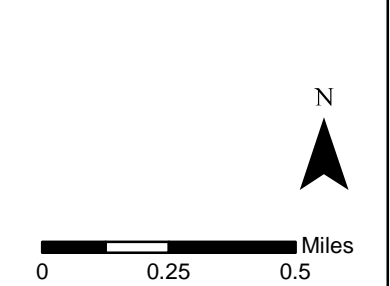
- Structure
- Drop Point
- Helispot
- W Water Source
-) (Division Break
- Uncontrolled Fire Edge
- Completed Line
- R - R Road as Completed Line
- Completed Dozer Line
- H - H Hand Line
- Proposed Dozer Line
- Overhead Powerline
- Telephone
- Highway
- Forest Boundary

N

0 0.25 0.5 Miles



- Legend**
- Structure
 - Drop Point
 - Helispot
 - W Water Source
 -) (Division Break
 - ┌ Uncontrolled Fire Edge
 - Completed Line
 - R - R Road as Completed Line
 - Completed Dozer Line
 - H - H Hand Line
 - Other
 - Overhead Powerline
 - Telephone
 - Highway
 - Forest Boundary

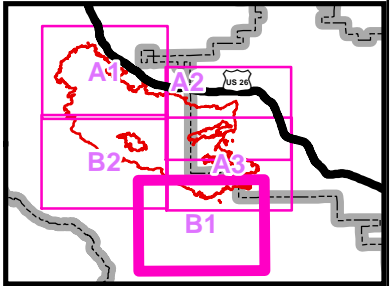


Lava Mountain

WY-SHF-000267

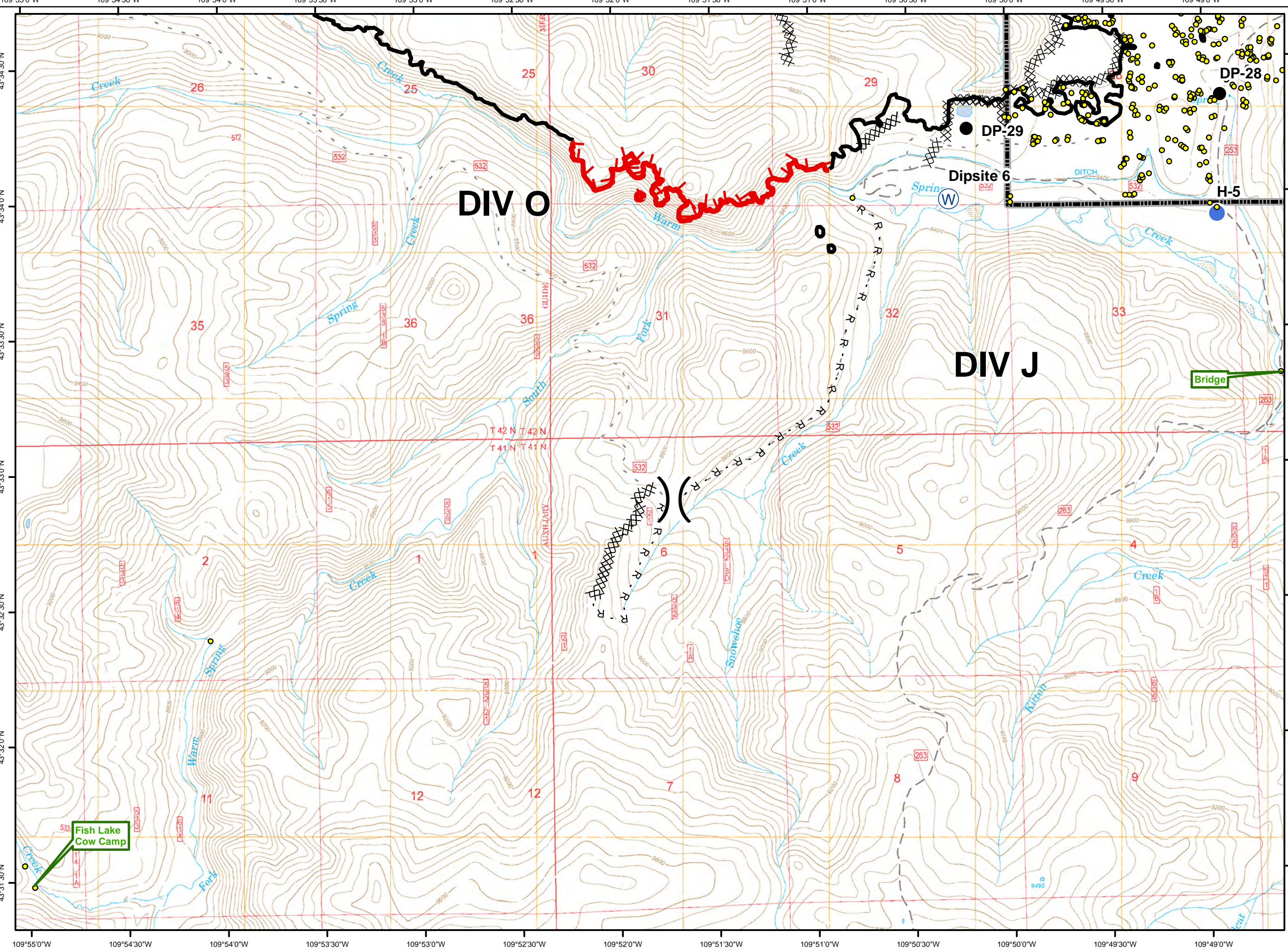
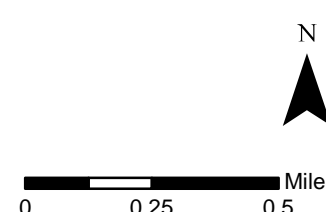
B1

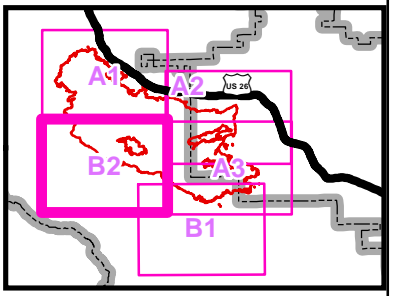
Page 4 of 5
08/09/2016



Legend

- Structure
- Drop Point
- Helispot
- Water Source
- Division Break
- Uncontrolled Fire Edge
- Completed Line
- Road as Completed Line
- Completed Dozer Line
- Overhead Powerline
- Telephone
- Forest Boundary





Legend

- Structure
- Drop Point
- Helispot
- Water Source
- Division Break
- Uncontrolled Fire Edge
- Completed Line
- Road as Completed Line
- Completed Dozer Line
- Overhead Powerline
- Telephone
- Forest Boundary

N

0 0.25 0.5 Miles

