

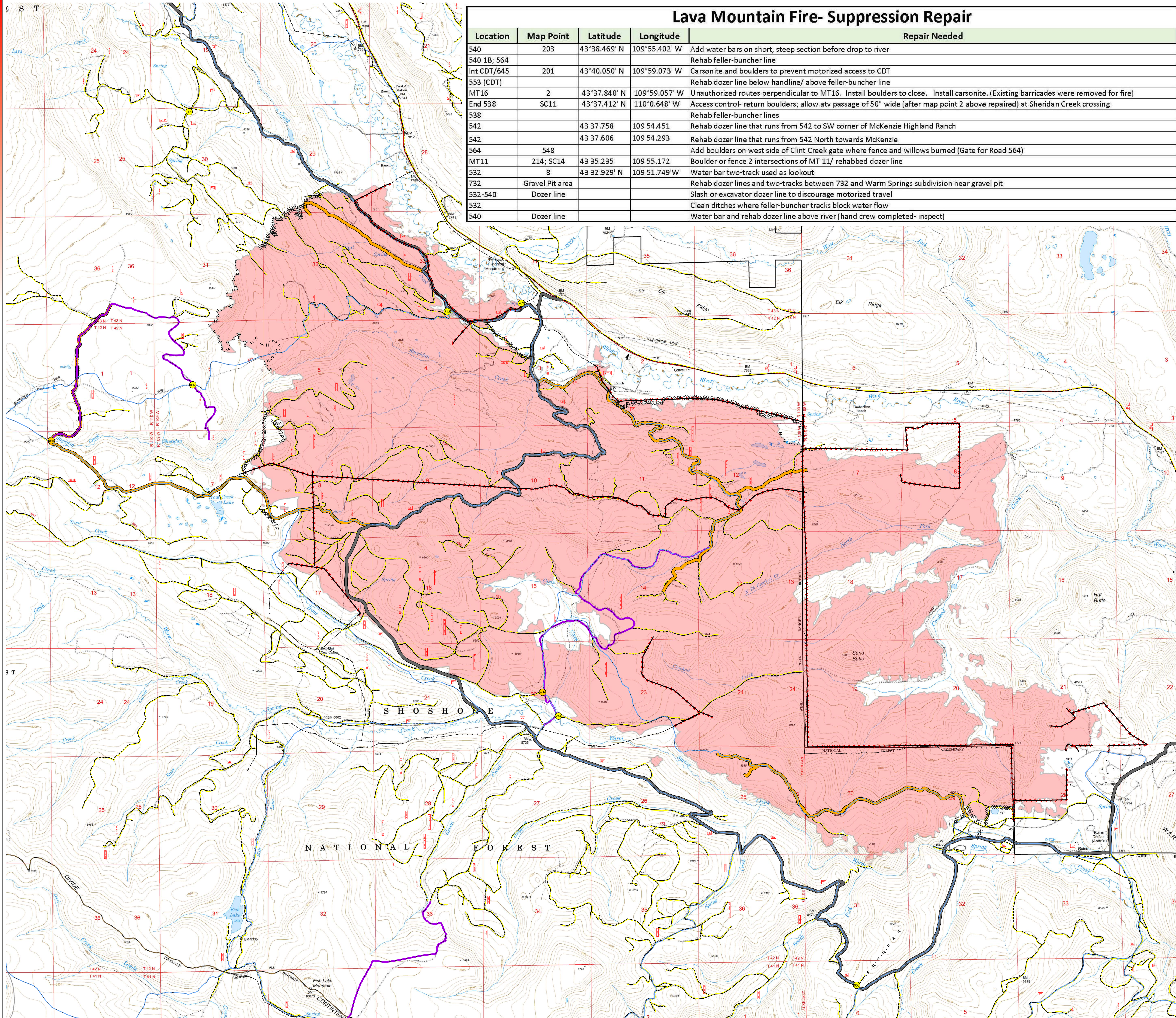
# SUPPRESSION REPAIR

NEEDED as of Sept. 1, 2016  
 Lava Mountain WY-SHF-267  
 Aug. 29, 2016

Location	Map Point	Latitude	Longitude	Repair Needed
540	203	43°38.469' N	109°55.402' W	Add water bars on short, steep section before drop to river
540 1B; 564				Rehab feller-buncher line
Int CDT/645	201	43°40.050' N	109°59.073' W	Carsonite and boulders to prevent motorized access to CDT
553 (CDT)				Rehab dozer line below handline/ above feller-buncher line
MT16	2	43°37.840' N	109°59.057' W	Unauthorized routes perpendicular to MT16. Install boulders to close. Install carsonite. (Existing barricades were removed for fire)
End 538	SC11	43°37.412' N	110°0.648' W	Access control- return boulders; allow atv passage of 50" wide (after map point 2 above repaired) at Sheridan Creek crossing
538				Rehab feller-buncher lines
542		43 37.758	109 54.451	Rehab dozer line that runs from 542 to SW corner of McKenzie Highland Ranch
542		43 37.606	109 54.293	Rehab dozer line that runs from 542 North towards McKenzie
564	548			Add boulders on west side of Clint Creek gate where fence and willows burned (Gate for Road 564)
MT11	214; SC14	43 35.235	109 55.172	Boulder or fence 2 intersections of MT 11/ rehabbed dozer line
532	8	43 32.929' N	109 51.749' W	Water bar two-track used as lookout
732	Gravel Pit area			Rehab dozer lines and two-tracks between 732 and Warm Springs subdivision near gravel pit
532-540	Dozer line			Slash or excavator dozer line to discourage motorized travel
532				Clean ditches where feller-buncher tracks block water flow
540	Dozer line			Water bar and rehab dozer line above river (hand crew completed- inspect)

## Legend

- Simeon 1-15
  - Brandon\_wpts\_08072016
  - Brandon\_20160719\_Wypts
  - Brandon\_wpts\_fromTopo
- Fireline Type**
- XXXXXX Completed Dozer Line
  - H-H-H-H Hand Line
  - R-R-R-R Road as Completed Line
  - allfencesmerge
  - +++++ FencesclippedFireArea080816
  - Snowmobile Trails
  - Motorized Trail
- Road**
- <all other roads>
- Gray - Motor Grader Work**
- 240
  - 532, Hazard Tree Removal
  - 538, Hazard Tree Removal
  - 540, Hazard Tree Removal
  - 542, Hazard Tree Removal
  - 629, Hazard Tree Removal
  - 540.1B, Hazard Tree Removal
  - 732, Hazard Tree Removal
  - Lava Mountain Fire Area



Created by M Buzalsky  
 NAD 83 UTM Zone 12

1:18,000

0 1 Miles