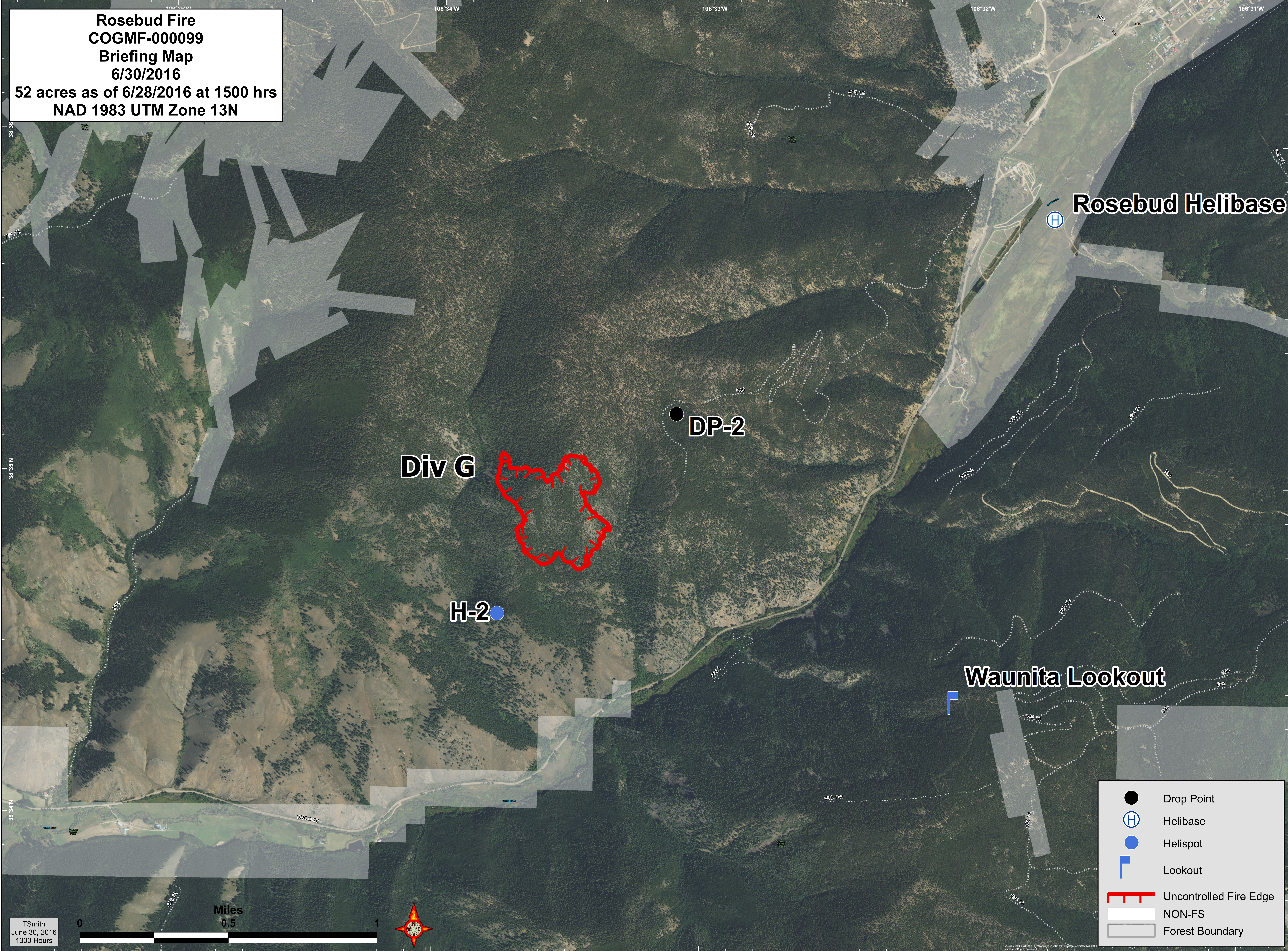


Rosebud Fire
COGMF-000099
Briefing Map
6/30/2016
52 acres as of 6/28/2016 at 1500 hrs
NAD 1983 UTM Zone 13N



Rosebud Helibase

Div G

DP-2

H-2

Waunita Lookout

- Drop Point
- Ⓜ Helibase
- Helispot
- Ⓩ Lookout
- ▬ Uncontrolled Fire Edge
- ▬ NON-FS
- ▬ Forest Boundary

