

107°6'0"W

107°4'30"W

107°3'0"W

107°1'30"W

107°0'0"W

41°4'30"N

41°4'30"N

41°3'0"N

41°3'0"N

41°1'30"N

41°1'30"N

107°6'0"W


107°4'30"W

107°3'0"W




107°1'30"W

107°0'0"W

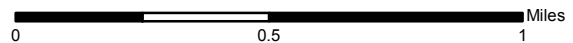
**NATIONAL INFRARED OPERATIONS**


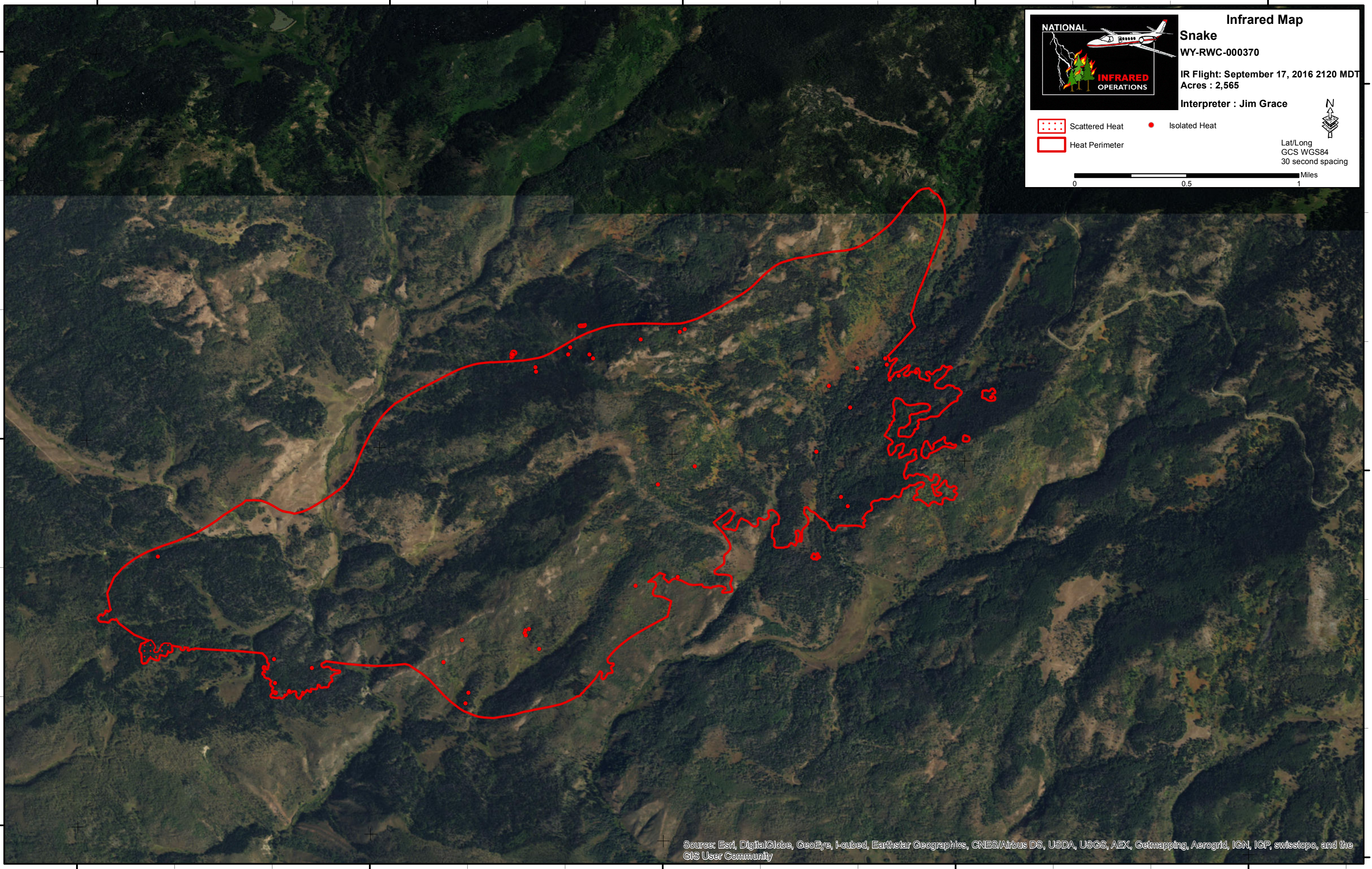


**Infrared Map**  
**Snake**  
 WY-RWC-000370  
 IR Flight: September 17, 2016 2120 MDT  
 Acres : 2,565  
 Interpreter : Jim Grace

 Scattered Heat    
  Isolated Heat  
 Heat Perimeter

Lat/Long  
 GCS WGS84  
 30 second spacing

 Miles

Source: Esri, DigitalGlobe, GeoEye, i-cubed, Earthstar Geographics, CNES/Airbus DS, USDA, USGS, AEX, Getmapping, Aerogrid, IGN, IGP, swisstopo, and the GIS User Community