

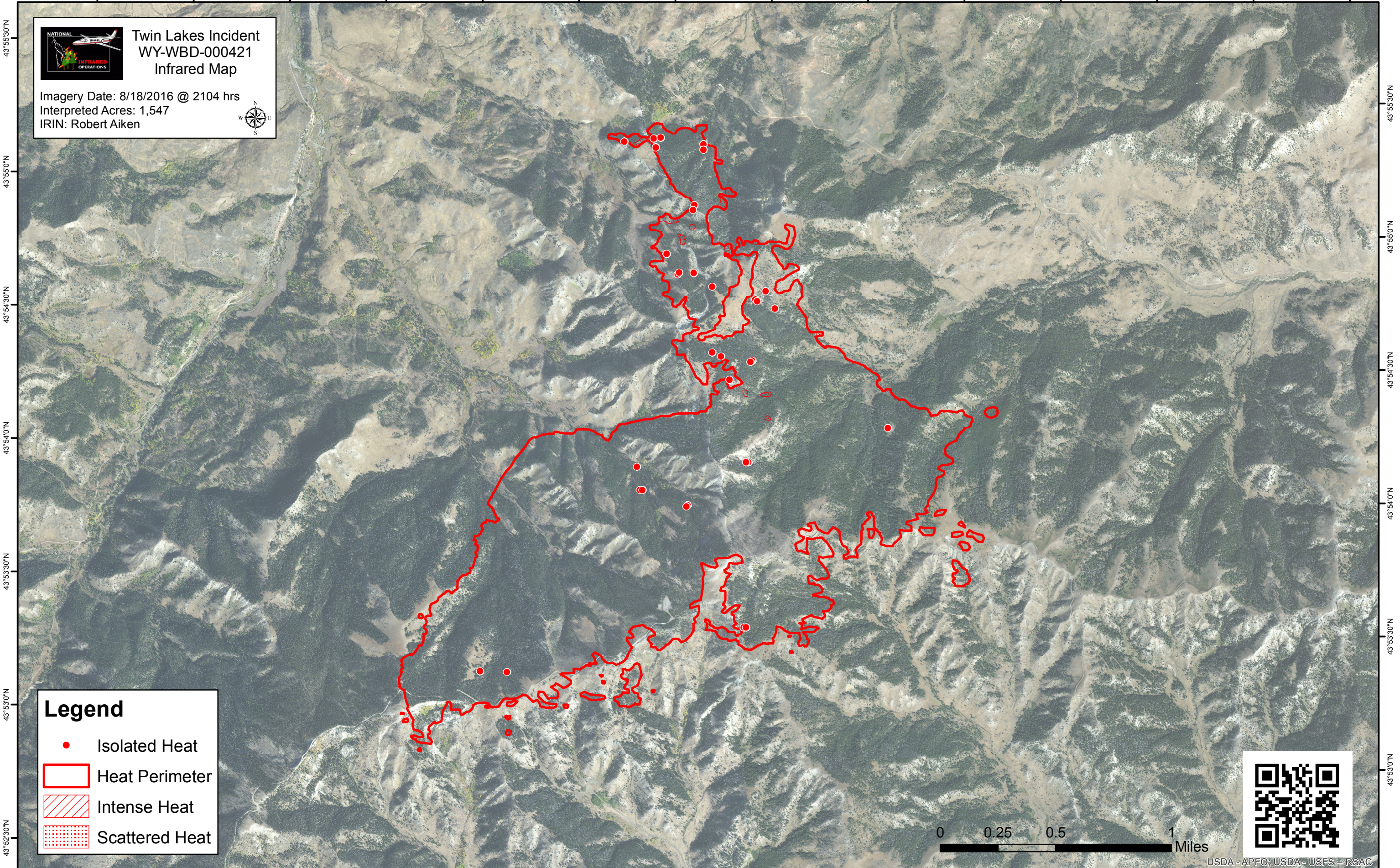


109°1'0"W 109°0'30"W 109°0'0"W 108°59'30"W 108°59'0"W 108°58'30"W 108°58'0"W 108°57'30"W 108°57'0"W 108°56'30"W 108°56'0"W 108°55'30"W 108°55'0"W 108°54'30"W



Twin Lakes Incident
WY-WBD-000421
Infrared Map

Imagery Date: 8/18/2016 @ 2104 hrs
 Interpreted Acres: 1,547
 IRIN: Robert Aiken

Legend

- Isolated Heat
- Heat Perimeter
- Intense Heat
- Scattered Heat



109°1'0"W 109°0'30"W 109°0'0"W 108°59'30"W 108°59'0"W 108°58'30"W 108°58'0"W 108°57'30"W 108°57'0"W 108°56'30"W 108°56'0"W 108°55'30"W 108°55'0"W 108°54'30"W