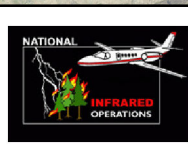
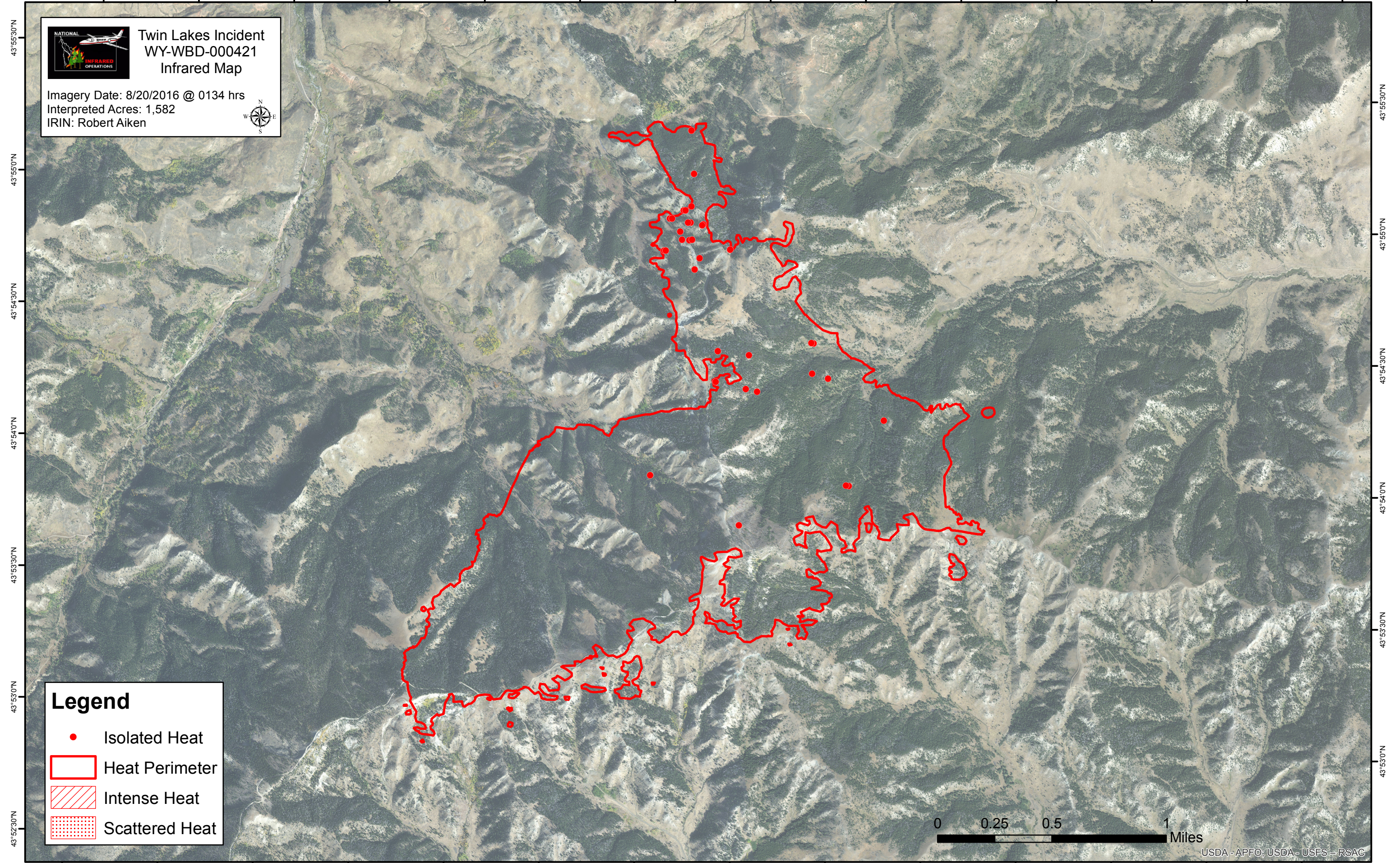


109°1'0"W 109°0'30"W 109°0'0"W 108°59'30"W 108°59'0"W 108°58'30"W 108°58'0"W 108°57'30"W 108°57'0"W 108°56'30"W 108°56'0"W 108°55'30"W 108°55'0"W 108°54'30"W



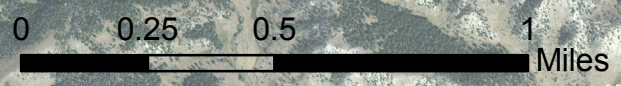
Twin Lakes Incident WY-WBD-000421 Infrared Map

Imagery Date: 8/20/2016 @ 0134 hrs
Interpreted Acres: 1,582
IRIN: Robert Aiken



Legend

- Isolated Heat
- Heat Perimeter
- Intense Heat
- Scattered Heat



109°1'0"W 109°0'30"W 109°0'0"W 108°59'30"W 108°59'0"W 108°58'30"W 108°58'0"W 108°57'30"W 108°57'0"W 108°56'30"W 108°56'0"W 108°55'30"W 108°55'0"W 108°54'30"W