

WHIT FIRE WY-PAX-000393

Operations Map 8/6/16

IR Perimeter as of 8/5/16 @ 0033 10,198 ac.



0 0.5 1 1.5 2 Miles

NB 8/5/16 2300

Datum NAD83

BRANCH I

Div A

Div D

Div T

Div Z

Div W

BRANCH II

Shoshone National Forest

Washakie Wilderness

Cow Camp

Stonebridge Dip Site

Southfork Dip Site

ICP

DP 11

Helibase DP 12

DP 13

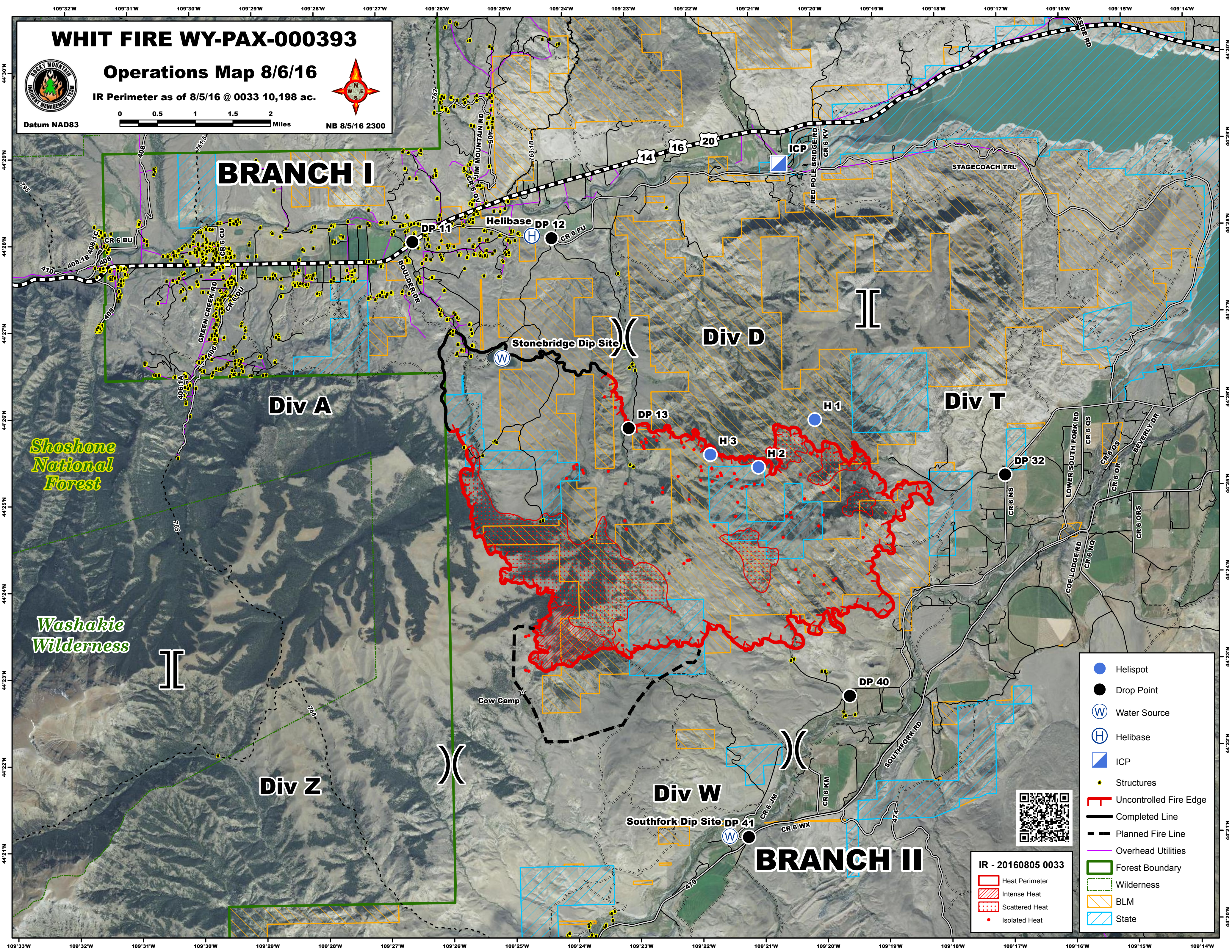
DP 40

DP 32

H3

H2

H1



- Helispot
- Drop Point
- ⊕ Water Source
- ⊕ Helibase
- ▣ ICP
- Structures
- Uncontrolled Fire Edge
- Completed Line
- Planned Fire Line
- Overhead Utilities
- ▭ Forest Boundary
- ▭ Wilderness
- ▭ BLM
- ▭ State

IR - 20160805 0033

- ▭ Heat Perimeter
- ▭ Intense Heat
- ▭ Scattered Heat
- Isolated Heat