

WHIT FIRE WY-PAX-000393

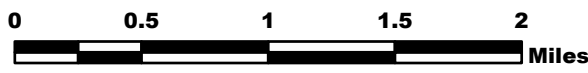


Briefing Map 8/6/16

IR Perimeter as of 8/5/16 @ 0033 - 10,198 ac.



Datum NAD83



NB 8/5/16 2230

BRANCH I

Div A

Div D

Div T

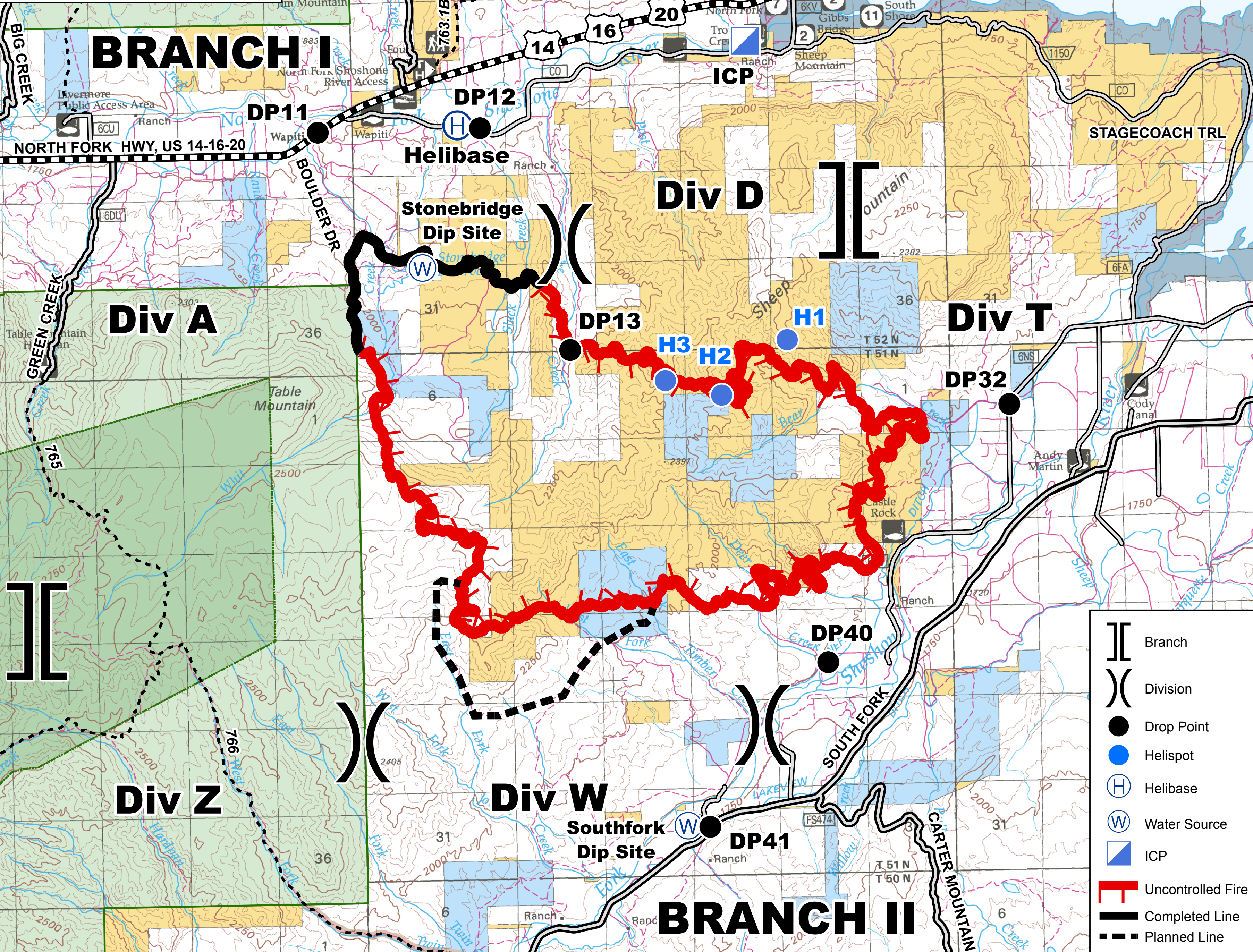
Div Z

Div W

BRANCH II

Shoshone National Forest

Washakie Wilderness



	Branch
	Division
	Drop Point
	Helispot
	Helibase
	Water Source
	ICP
	Uncontrolled Fire
	Completed Line
	Planned Line