

# WHIT FIRE WY-PAX-000393

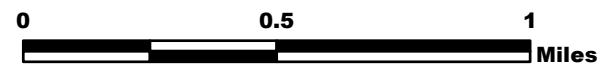


## North Structures 8/6/16

IR Perimeter as of 8/5/16 @ 0033 10,198 ac.

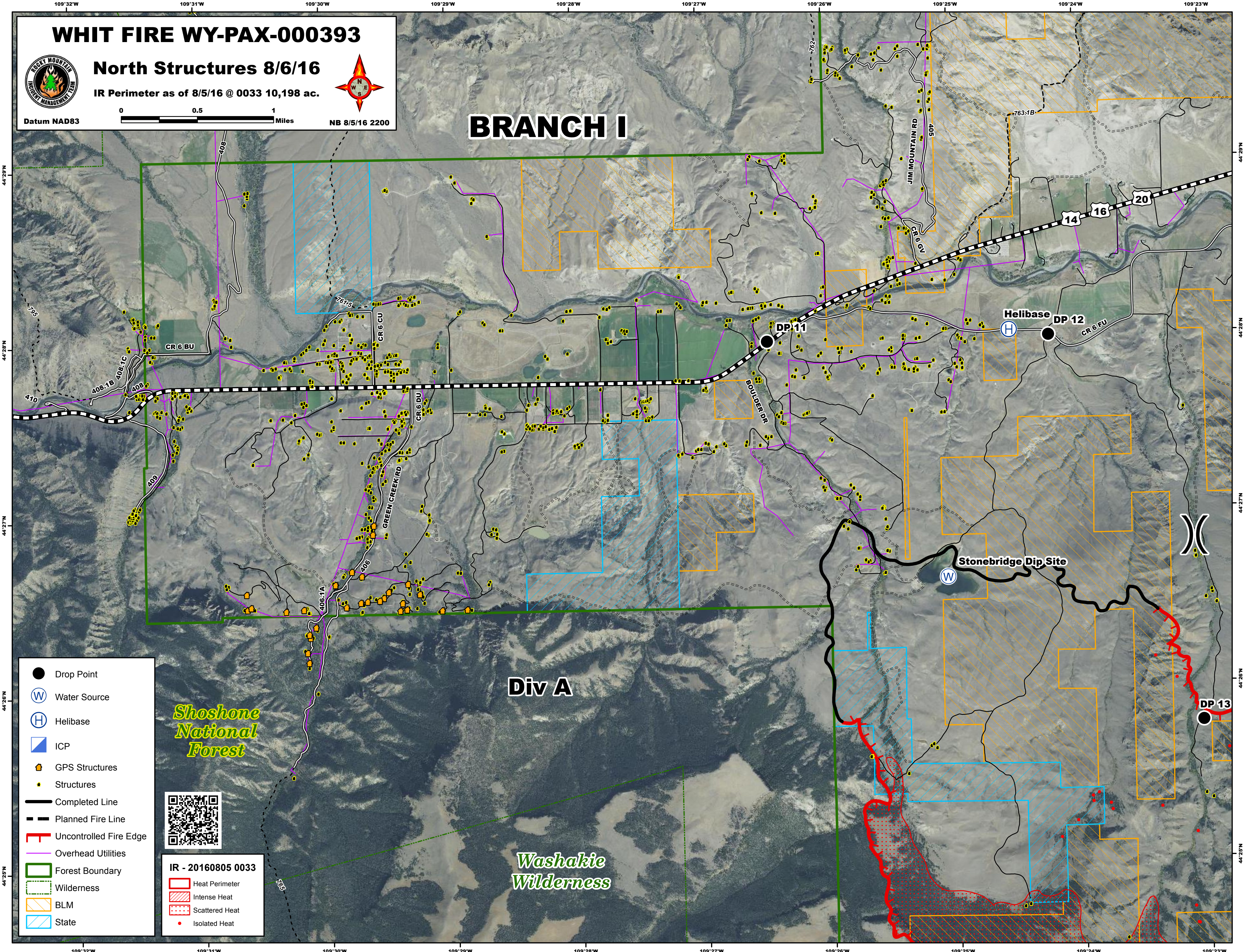


Datum NAD83



NB 8/5/16 2200

# BRANCH I



- Drop Point
- ⊕ Water Source
- ⊕ Helibase
- ▣ ICP
- 🏠 GPS Structures
- Structures
- Completed Line
- - - Planned Fire Line
- ┌ Uncontrolled Fire Edge
- Overhead Utilities
- ▭ Forest Boundary
- ▭ Wilderness
- ▭ BLM
- ▭ State

*Shoshone National Forest*



- IR - 20160805 0033
- ▭ Heat Perimeter
  - ▭ Intense Heat
  - ▭ Scattered Heat
  - Isolated Heat

Div A

*Washakie Wilderness*

Helibase DP 12

DP 11

Stonebridge Dip Site

DP 13