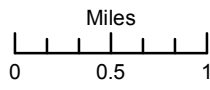
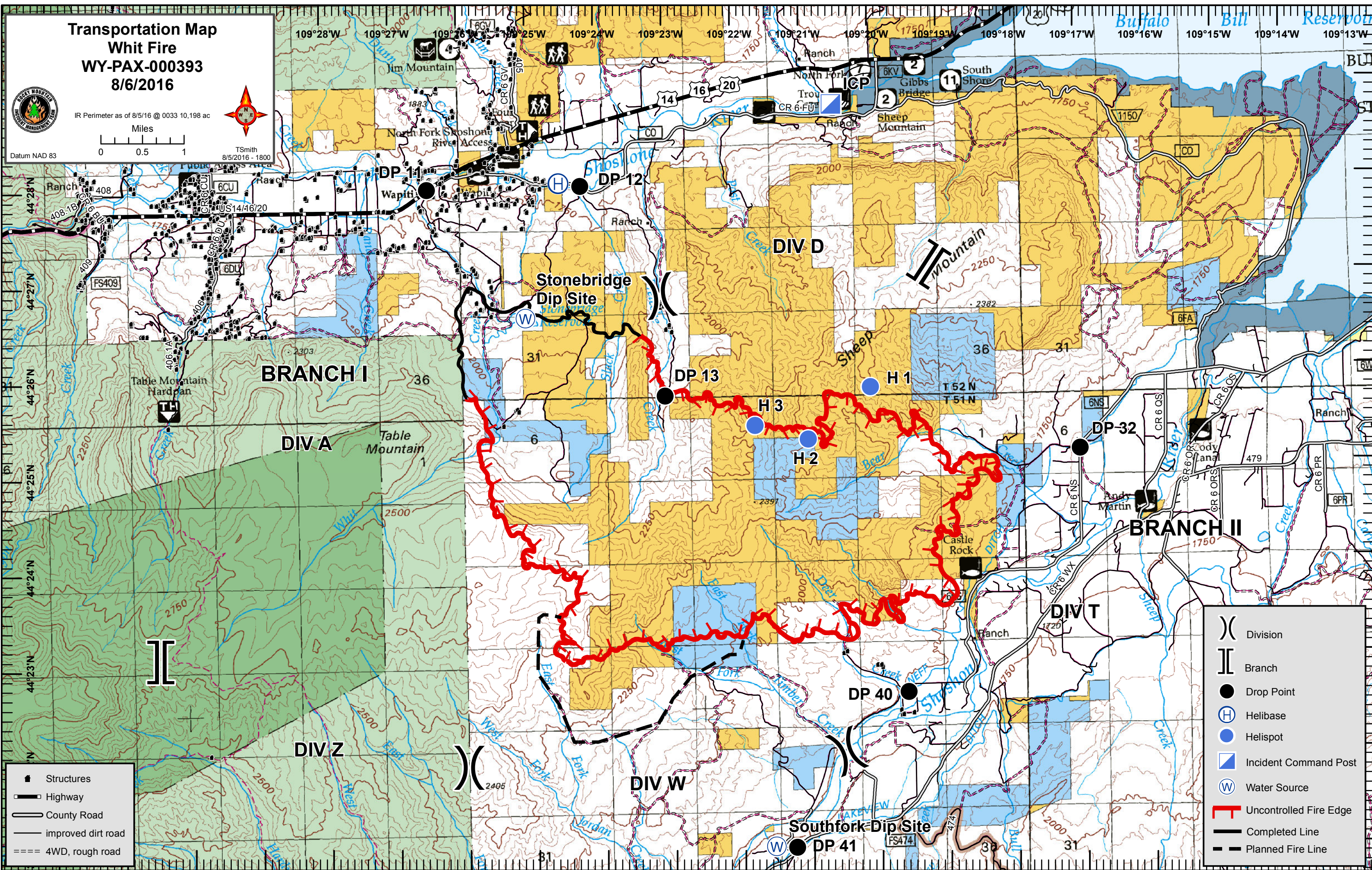


**Transportation Map  
Whit Fire  
WY-PAX-000393  
8/6/2016**

IR Perimeter as of 8/5/16 @ 0033 10,198 ac



Datum NAD 83 TSmith 8/5/2016 - 1800



- Structures
- Highway
- County Road
- improved dirt road
- 4WD, rough road

- Division
- Branch
- Drop Point
- Helibase
- Helispot
- Incident Command Post
- Water Source
- Uncontrolled Fire Edge
- Completed Line
- Planned Fire Line