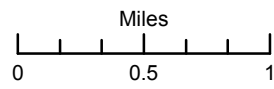


IAP Map Whit Fire WY-PAX-000393 8/7/2016

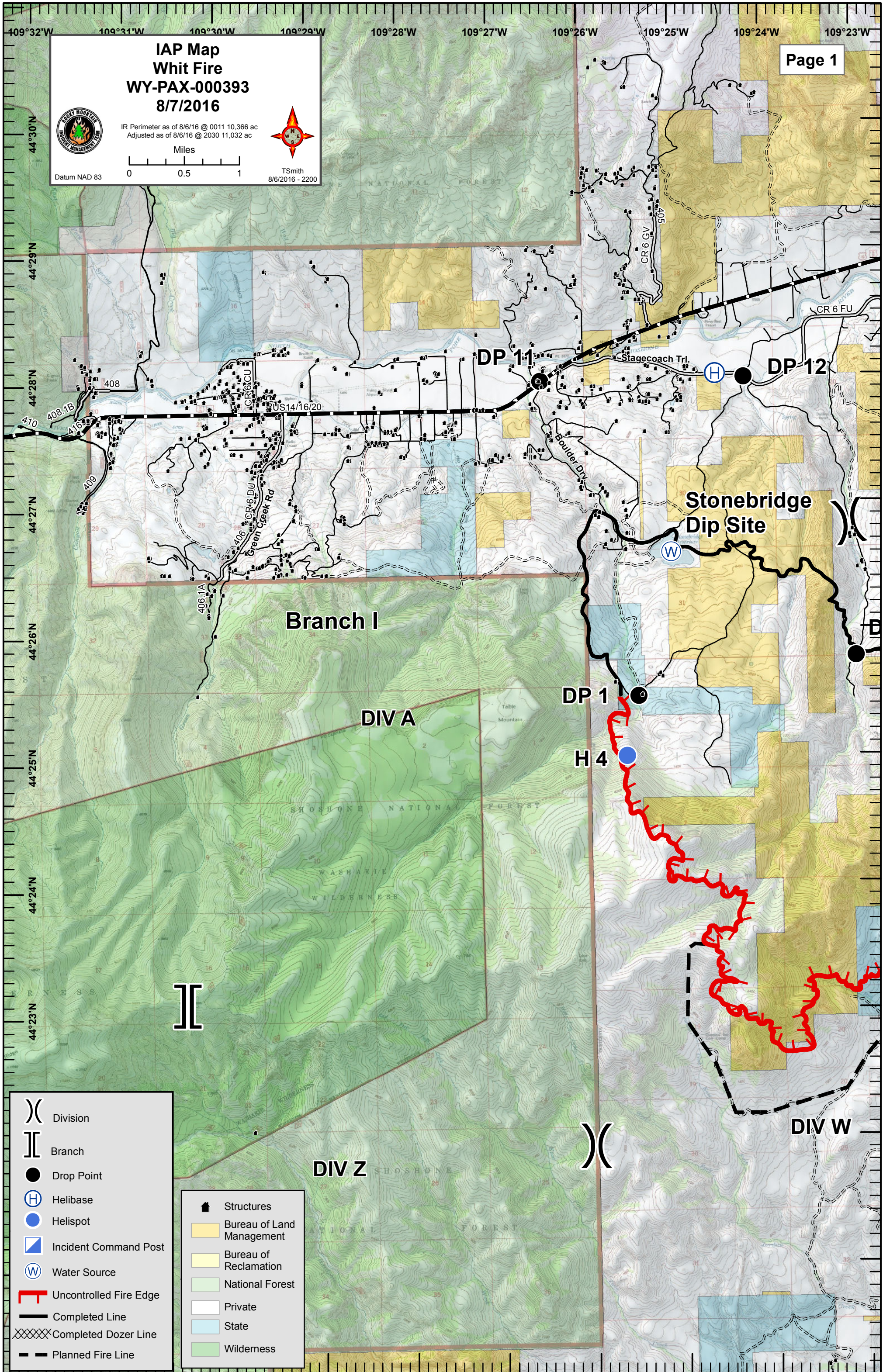


IR Perimeter as of 8/6/16 @ 0011 10,366 ac
Adjusted as of 8/6/16 @ 2030 11,032 ac



TSmith
8/6/2016 - 2200

Datum NAD 83



I

Branch I

DIV A

DIV Z

Stonebridge Dip Site

DP 11

DP 12

DP 1

H 4

DIV W

- Division
- Branch
- Drop Point
- Helibase
- Helispot
- Incident Command Post
- Water Source
- Uncontrolled Fire Edge
- Completed Line
- Completed Dozer Line
- Planned Fire Line

- Structures
- Bureau of Land Management
- Bureau of Reclamation
- National Forest
- Private
- State
- Wilderness