

WHIT FIRE WY-PAX-000393

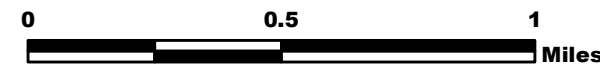


North Structures 8/7/16

IR Perimeter as of 8/6/16 @ 0011 10,366 ac.
Adjusted Perimeter as of 2030 8/6/16 11,032 ac.

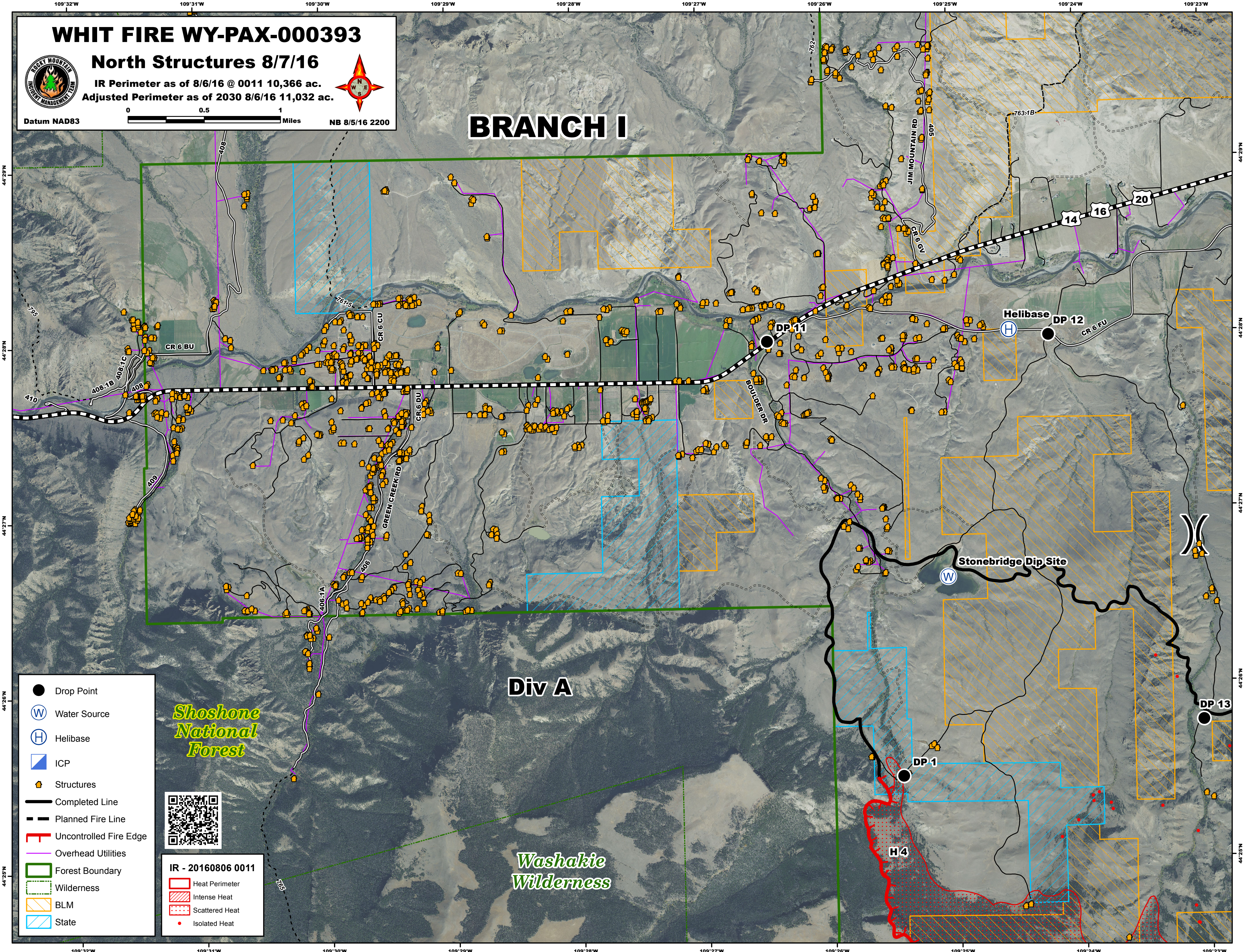


Datum NAD83



NB 8/5/16 2200

BRANCH I



- Drop Point
- ⊕ Water Source
- ⊕ Helibase
- ▣ ICP
- 🏠 Structures
- Completed Line
- - - Planned Fire Line
- ┌ Uncontrolled Fire Edge
- Overhead Utilities
- ▭ Forest Boundary
- ▭ Wilderness
- ▨ BLM
- ▨ State

Shoshone National Forest



- IR - 20160806 0011
- ▭ Heat Perimeter
 - ▨ Intense Heat
 - ▨ Scattered Heat
 - Isolated Heat

Div A

Washakie Wilderness

H4